

GCS1942H

2-Port 4K Dual View KVMP Switch with HDMI Connection, USB 3.0 Hub and Audio (TAA)



- Maximize your high-end multi-monitor workstation with superior video resolution
- Share dual Cinema 4K HDMI-enabled monitors (4096 x 2160 @60Hz)
- Operate 2 HDMI computers with 1 keyboard, mouse, and 2 monitors
- Add another GCS1942H to expand up to four 4K monitors
- HDMI 2.0 compliant, HDCP 2.2 compliant

Enhance High-End Multi-Monitor Workstation

Maximize your high-end dual HD workstations by connecting them to the 2-Port 4K Dual View KVMP Switch with HDMI(R) Connection, USB 3.0 and Audio. Experience Cinema 4K resolutions along with rich bass and 7.1 surround sound while switching between both computers and sharing two USB 3.0 peripherals with the push of a button.

- Maximize your high-end multi-monitor workstation with superior video resolution
- Share dual Cinema 4K HDMI-enabled monitors (4096 x 2160 @60Hz)
- Operate 2 HDMI computers with 1 keyboard, mouse, and 2 monitors
- Add another GCS1942H to expand up to four 4K monitors
- HDMI 2.0 compliant, HDCP 2.2 compliant
- Allows independent switching of the KVM, USB, and audio devices
- Control/share USB3.0 peripherals between 2 computers; save money on duplicate devices
- Work on computer "A" without interrupting USB peripheral connectivity on computer "B"
- SuperSpeed 5Gbps transfer rate
- Computer selection via front panel pushbuttons, hotkeys, or mouse¹
- Supports 7.1 HD audio through HD²
- Full bass response for high quality 2.1 channel audio
- Mouse emulation or bypass feature supports most mouse drivers and multifunction mice
- Multi-platform support – Windows®7, Windows 8.1, Windows 10, Mac OS®, and Linux®
- Multilingual keyboard mapping supports English, French, and German keyboards
- Mac® keyboard support and emulation³
- RS-232 Commands⁴
- Auto-Scan Mode to monitor all computers
- Power on detection
- Hot pluggable
- Firmware upgradable
- Includes all KVM and audio cables

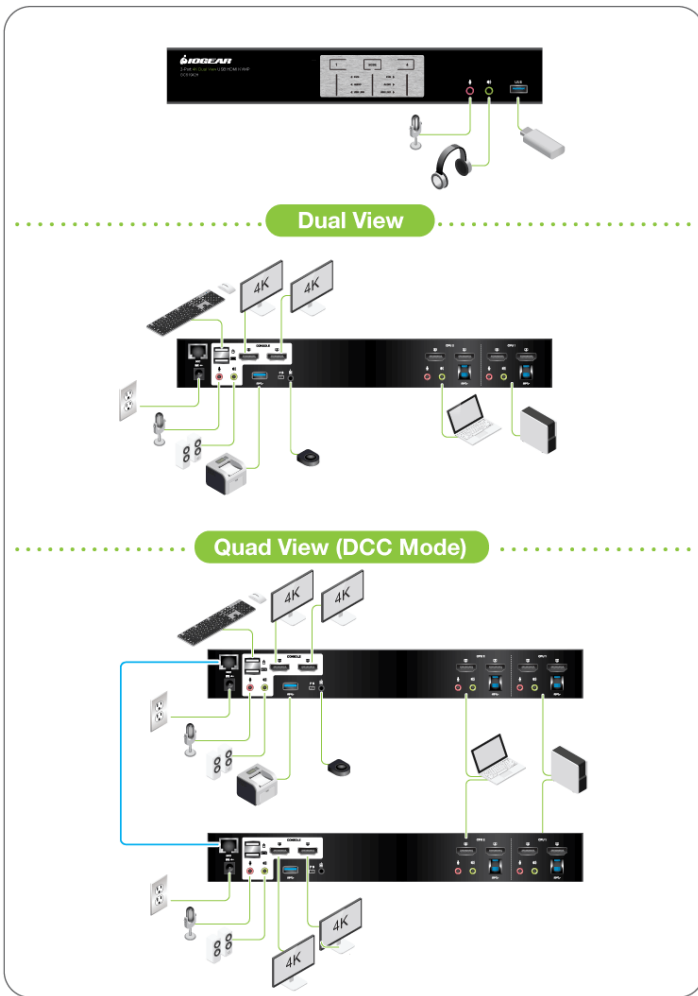
¹ Mouse port switching supported alongside mouse emulation mode using a USB 3-button mouse wheel.

² HD audio through HDMI cannot be switched independently.

³ PC keyboard combinations emulate Mac® keyboards.

⁴ DB9 to RJ-45 cable not included.





Requirements

- **Console**
- 2 x HDMI-enabled monitors
- Standard 104-key wired USB keyboard
- Standard 2 or 3-button wired USB mouse
- Microphone and speakers (optional)
- **Computer**
- 2 x HDMI ports
- Type-A USB port
- Audio ports (optional)

Package Contents

- 1 x 2-Port 4K Dual View KVMP Switch with HDMI Connection, USB 3.0 Hub and Audio
- 4 x HDMI Cables (6ft.)
- 2 x USB 3.0 Cables (6ft.)
- 2 x Audio Cable Set (6ft.)
- 1 x Power Adapter
- 1 x Remote Port Selector
- 1 x Quick Start Guide

*Use with video adapter may change performance

Specifications

Function	GCS1942H	Dimensions	GCS1942H
Computer Connections		Unit Package Dimensions	
Direct	2	Height	9.2 in. (23.2 cm)
Daisy Chain or Cascading	2	Length	21.3 in. (54.0 cm)
Port Selection		Width	4.8 in. (12.0 cm)
Hotkey, Pushbutton, Mouse, RS-232 Commands, Remote Port Selector		Master Carton	
Console Connectors		Height	10.3 in. (26.0 cm)
Monitor	2 x HDMI (Black)	Length	22.0 in. (56.0 cm)
Keyboard	1 x USB Type A (Black)	Width	15.2 in. (38.4 cm)
Mouse	1 x USB Type A (Black)	Master Carton Qty.	3
Audio	2 x 3.5mm Mini Stereo Jack (Green; Front and Rear)	Weight	
Microphone	2 x 3.5mm Mini Stereo Jack (Pink; Front and Rear)	Master Carton Wt.	23.5 lb. (10.7 kg)
CPU Connectors		Unit Pack Wt.	7.25 lb. (3.3 kg)
Monitor	4 x HDMI (Black)		
Keyboard & Mouse	2 x USB 3.0 Type B (Blue)		
Audio	2 x 3.5mm Mini Stereo Jack (Green; Front)		

Microphone	
Daisy Chain	1 x RJ-45 Female
Switches	
Port Selection	2 x Pushbutton
Select	1 x Slide Switch
Connectors	
USB	1 x USB 3.0 Type A (Blue; Front), 1 x USB 3.0 Type A (Blue; Rear)
Serial	1 x RJ-45 (DCC)
Remote Port Selector	1 x 2.5mm Audio Jack Female
LEDs	
On Line	3 x Orange
Selected	3 x Orange
Audio	3 x Green
USB Peripherals	3 x Green
Emulation	
Keyboard	USB
Mouse	USB
Video Resolution	4096 x 2160 @60 Hz (4K DCI)
Scan Interval	1-99 Seconds (Default: 5 sec.)
Power Consumption	DC12V:3.17W:57BTU
Environment	
Operation Temperature	32~ 104F (0~40 C)
Storage Temperature	-4~140 F (-20~60 C)
Humidity	0~80% RH, Non-condensing
Housing	
Case	Metal