

RAM® Form-Fit Powered Dock for Zebra XSLATE L10

The GDS® Vehicle Dock features a form-fit design specifically for the Zebra XSLATE L10, including cutouts leaving all buttons and ports exposed. The dock also allows the tablet's scanning function to work through the cutout on the back which also accommodates tablet add-ons such as scanner, hand strap, kickstand and extended battery bracket. The GDS® Powered Dock and GDS® Power & Data Dock allows you to keep the device charged through the pogo pin contacts when the device is docked—power is provided by connecting to the dock's 5.5mm DC power jack. This vehicle dock is compatible with C and D size RAM® 4-hole AMPS and 75mm x 75mm VESA pattern bases for attaching a double socket arm in order to complete your mounting solution.

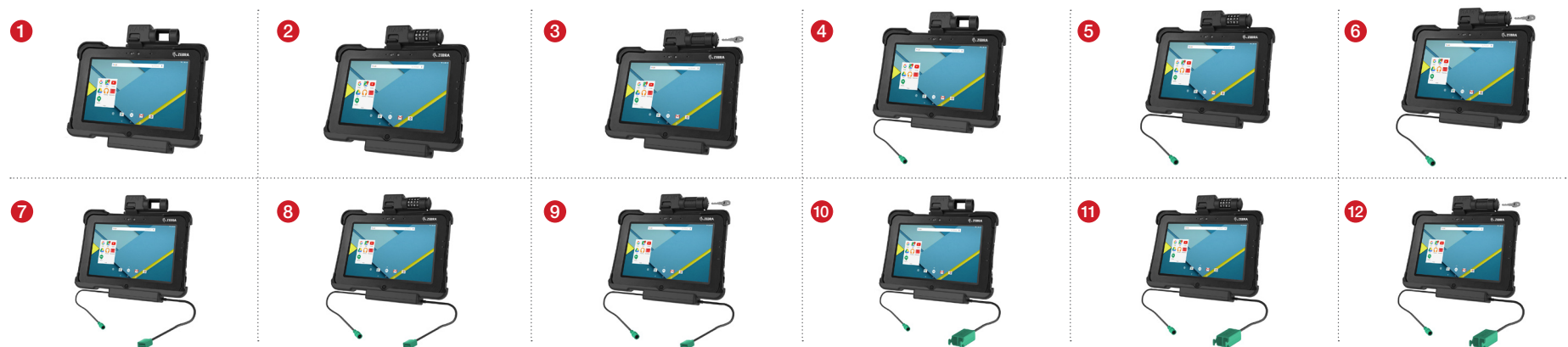
Compatible Device:
Zebra XSLATE L10



RAM-HOL-ZE15U

PART NUMBER	COMBO LOCKING	KEY LOCKING	POWERED	SINGLE USB PERIPHERAL PORTS	DUAL USB PERIPHERAL PORTS
1 RAM-HOL-ZE15U					
2 RAM-HOL-ZE15CLU	•				
3 RAM-HOL-ZE15KLU		•			
4 RAM-HOL-ZE15PU			•		
5 RAM-HOL-ZE15PCLU	•		•		
6 RAM-HOL-ZE15PKLU		•	•		
7 RAM-HOL-ZE15PDU			•	•	
8 RAM-HOL-ZE15PDCLU	•		•	•	
9 RAM-HOL-ZE15PDKLU		•	•	•	
10 RAM-HOL-ZE15PD2U			•		•
11 RAM-HOL-ZE15PD2CLU	•		•		•
12 RAM-HOL-ZE15PD2KLU		•	•		•

Patented & Pats. Pend.



rammount.com
1-800-497-7479
sales@rammount.com



RAM® Form-Fit Powered Dock for Zebra XSLATE L10

GDS® Compatible™ Chargers:



RAM-GDS-CHARGE-V11U
GDS® 10-32VDC Input (19VDC Output)
Hardwire Charger with Male DC 5.5mm



RAM-GDS-CHARGE-V12U
GDS® 24-60VDC Input (19VDC Output)
Hardwire Charger with Male DC 5.5mm

