

ACC185



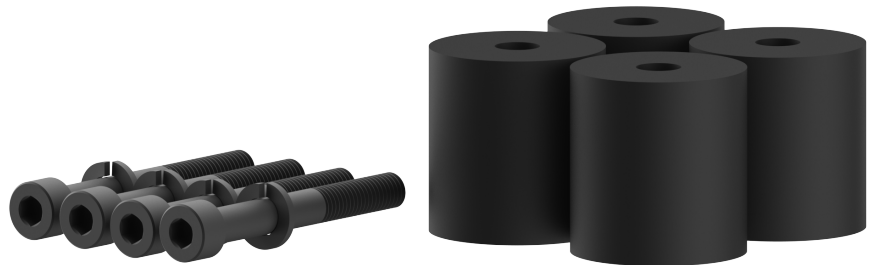
Max Load
185lb
(83.9kg)

Screw and Spacer Kit

FOR 85" MICROSOFT® SURFACE™ HUB 2S

The ACC185 Screw and Spacer Kit provide the appropriate spacing needed around the compute module to attach an 85" Microsoft® Surface™ Hub 2S to a wall mount or mobile cart. The robust spacers ensure a solid connection that provide a wobble free touch application, and the custom screws are specified with the proper length for a proper installation.

- Includes (4) spacers, (4) screws and (4) lock washers
- Compatible with the following Peerless-AV® models: SF680, ST680, SR598



Please visit peerless-av.com/en-us/patents for patent information.

| | |
|---------------|---|
| ACC185 | Screw and Spacer Kit for 85" Microsoft® Surface™ Hub 2S |
|---------------|---|

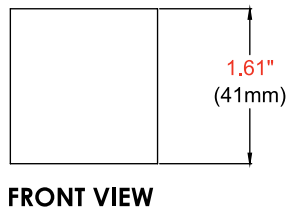
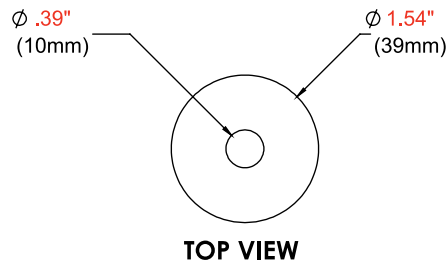
Product Specifications

| | DIMENSIONS (W x H x D) | PRODUCT WEIGHT | LOAD CAPACITY | FINISH | AVAILABLE COLORS |
|---------------|---|----------------|----------------|--------|------------------|
| ACC185 | 1.54" x 1.61" x 1.54" (39 x 41 x 39mm) | 0.1lb (0.05kg) | 185lb (83.9kg) | Nylon | Black |

Package Specifications

| | PACKAGE SIZE (W x H x D) | PACKAGE SHIP WEIGHT | PACKAGE UPC CODE | PACKAGE CONTENTS | UNITS IN PACKAGE |
|---------------|--|---------------------|------------------|---|------------------|
| ACC185 | 3.00" x 3.25" x 7.75" (76 x 83 x 197mm) | 1.0lb (0.5kg) | 735029342700 | (4) Spacers (4) Screws (4) Lock Washers | 1 |

All dimensions = inch (mm)



Architect Specifications

The Screw and Spacer Kit for 85" Microsoft® Surface™ Hub 2S shall be a Peerless-AV model ACC185 and shall be located where indicated on the plans. Assembly and installation shall be done according to instructions provided by the manufacturer.

Visit peerless-av.com to see the complete line of AV solutions from Peerless-AV, including outdoor displays, kiosks, display mounts, projector mounts, carts/stands, and a full assortment of accessories.

Peerless-AV
2300 White Oak Circle
Aurora, IL 60502 USA
(800) 865-2112
(630) 375-5100
Fax: (800) 359-6500

Peerless-AV EMEA
Unit 3 Watford Interchange
Colonial Way, Watford
Herts, WD24 4WP
United Kingdom
+44 (0) 1923 200100
Fax: +44 (0) 1923 200101

Peerless-AV Latin America
Av. de las Industrias 413
Parque Industrial Escobedo
General Escobedo, N.L.,
México, 66062
+52 (81) 8384-8300
Fax: +52 (81) 8384-8360

