

ThinkStation P330

POWER OF A
WORKSTATION
PRICE OF A
DESKTOP



Lenovo™

ThinkStation[®] P330 TOWER & SMALL FORM FACTOR



POWER OF A WORKSTATION PRICE OF A DESKTOP

Mission-critical tasks require superior reliability and powerful performance; the ThinkStation[®] P330 leads on both counts and does it with exceptional all-around value. These redesigned workstations offer the latest high-performance Intel[®] Core[™] i and Xeon[®] processors, NVIDIA[®] Quadro[®] professional graphics, with VR Ready capability, cutting-edge storage technologies, including on-board M.2, and Intel[®] Optane[™] memory; now in a 30% smaller package.

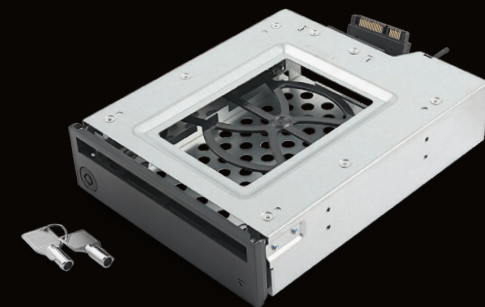
OPTIONS & ACCESSORIES

ThinkVision P27q ▶



◀ NVIDIA[®] Quadro P4000

Front Access ▶
Storage Enclosure



Lenovo[™]

Lenovo™ ThinkStation® P330 TWR & SFF

PERFORMANCE

Processor

Intel® Xeon® E-2100
Up to 8th Gen Intel® Core™ i7
with vPro

Operating System

Windows 10 Pro for Workstations¹
Windows 10 Pro²
Ubuntu Linux (pre-load)
Redhat Linux (certified)

Graphics

Up to NVIDIA® Quadro® P4000³
Intel® UHD Graphics

Total Memory

Up to 64GB 2666MHz, 4 DIMM Slots
ECC/non-ECC UDIMM DDR4

Memory DIMM Capacity

4/8/16GB 2666MHz non-ECC UDIMM
8/16GB 2666MHz ECC UDIMM

Total Storage

TWR⁴
Max M.2 = 3 (3TB)
Max 3.5" = 3 (12TB)
Max 2.5" = 4 (4TB)
SFF⁴
Max M.2 = 3 (3TB)
Max 3.5" = 1 (4TB)
Max 2.5" = 2 (2TB)

Storage Type Capacity

3.5" SATA 7200 rpm up to 4TB
2.5" SATA SSD up to 1TB
M.2 PCIe SSD up to 1TB

Optane Support

Intel® Optane™ 32GB Memory

Raid

0, 1, 5⁵, 10⁵

Chipset

Intel® C246

Power Supply

TWR
250W 92% Efficient
400W 92% Efficient
SFF
210W 85% Efficient
260W 92% Efficient

CONNECTIVITY

Front Ports

(2) USB 3.1 Gen 1 (Type A)
(2) USB 3.1 Gen 2 (Type A)
(1) USB 3.1 Gen 1 (Type C)
(1) Microphone
(1) Headset
(1) 7-in-1 Media Card Reader⁶
(1) Thunderbolt™ 3 (Type-C)^{5, 6, 7}
(1) 1394 IEEE Firewire^{5, 6}
(1) eSATA^{5, 6}

Rear Ports

(2) USB 3.1 Gen 1 (Type A)
(2) USB 2.0 (Type A)
(2) DisplayPort™
(1) HDMI⁶
(1) PS/2
(1) Serial
(1) Gigabit Ethernet
(1) Audio Line-out

Wi-Fi⁶

Intel® 9560 2x2 vPro

Expansion Slots⁵

1 x PCIe x16
1 x PCIe x4 (x16 Mechanical)
1 x PCIe x1

DESIGN

Dimensions

TWR - 10.6kg (23.4lb)
(mm) : H 376 x W 165 x D 328
(inches): H 14.8" x W 6.5" x D 12.9"
SFF - 6kg (13.2lb)
(mm) :H 343.5 x W 92.5 x D 305.6
(inches): H 13.5" x W 3.7" x D 12.0"

SOFTWARE

Windows 10 Preloads
Cyberlink® PowerDVD⁸
Cyberlink® Power2Go⁹
Lenovo™ Vantage
Microsoft® Office 2016 (trial)
Microsoft® LinkedIn

ISV CERTIFICATIONS

3DEXperience® (CATIA®), Alias®,
AutoCAD®, Barco®, Creo®
HyperWorks®, Inventor®
McKesson®, Microstation®
NX®, Revit®, Solid Edge®,
SolidWorks®, Teamcenter®
Tecnomatix®, Vectorworks®

GREEN CERTIFICATIONS

ENERGY STAR® 7.0
EPEAT™ GOLD
GREENGUARD®
80 PLUS® Platinum - 400W,
250W, 260W PSU
80 PLUS® Bronze - 210W PSU

OPTIONS & ACCESSORIES

ThinkVision® P27q Monitor
NVIDIA® Quadro® P4000
Front Access Storage Enclosure

For full list of accessories and options,
please visit <http://accsmartfind.lenovo.com>

1 Intel® Xeon® Processors only
2 Intel® Core® i Processors only
3 Only available on Tower with 400W power supply
4 Any combination of storage to equal maximum storage drives
5 Tower only
6 Optional
7 Via FLEX Module
8 Only models with DVD/DVD RW
9 Only models with DVD RW

RECOMMENDED SERVICES

Lenovo™ offers a comprehensive portfolio of services to support and protect your ThinkStation® investment—so you can focus on your business, not your IT.

Premier Support

Bypass phone menus and scripted troubleshooting to access advanced-level technicians with the expertise needed to quickly diagnose and solve problems.

Warranty Upgrades—Onsite and Next Business Day

Maximizes PC uptime and productivity by providing convenient, fast repair service the next business day.

Warranty Extensions (1 to 4 years total duration)

This fixed-term, fixed-cost service helps you accurately budget for PC expenses, protect your valuable investment, and potentially lower the cost of ownership over time.



Powered by Intel®
Xeon™ processors.
Intel Inside®. Powerful
Productivity Outside.

© 2018 Lenovo. All rights reserved. These products are available while supplies last. Prices shown are subject to change without notice. For any questions concerning price, please contact your Lenovo Account Executive. Lenovo is not responsible for photographic or typographic errors. Warranty: For a copy of applicable warranties, write to: Warranty Information, 500 Park Offices Drive, RTP, NC 27709, Attn: Dept. ZPYA/B600. Lenovo makes no representation or warranty regarding third-party products or services. Trademarks: Lenovo, the Lenovo logo, Rescue and Recovery, ThinkPad, ThinkCentre, ThinkStation, ThinkVantage, and ThinkVision are trademarks or registered trademarks of Lenovo. Microsoft, Windows, and Vista are registered trademarks of Microsoft Corporation. Intel, the Intel logo, Intel Inside, Intel Core, and Core inside are trademarks of Intel Corporation in the U.S. and other countries. Other company, product, and service names may be trademarks or service marks of others.