

# ideapad S540 (13")

STYLE AND ABILITY IN ONE.

AIN'T NO STOPPING YOU NOW.

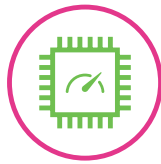
The power of Artificial Intelligence (AI). Out-of-this-world graphics capabilities. And best-in-class connectivity, both wireless and wired. With 10<sup>th</sup> Generation Intel® Core™ processors, the Lenovo™ IdeaPad™ S540 lets you tap into all of this, as well as enjoy seamless performance and up to 21 hours of battery life.

WHY YOU SHOULD BUY THE LENOVO IDEAPAD S540 (13")



## Work smarter, not harder

Thanks to its built-in AI features, the IdeaPad S540 will soon make your life easier. Log in hands-free with an IR camera that recognizes when you're ready to use the laptop. You can also ask Cortana to do various tasks for you, such as find something online or make an appointment.



## Real game-changing performance

The optional NVIDIA® GeForce® MX250, MX350 supercharges your laptop for work and play. Now, you can expect up to 3.5x faster performance over integrated graphics for photo- and video-editing applications, as well as faster, smoother gaming.



## See everything in a new light

Along with narrow bezels on all sides, wide-angle viewing, and 300-nits brightness, the 13.3" QHD display has some of the best color calibration out there and one of the highest PPI scores. The result is truly sumptuous viewing —with more life-like colors, crystal-clear images, and easier-to-read text.



## A cooler laptop in more ways than one

Equipped with a powerful new way to manage your computer's cooling, with intelligent thermal solutions, now you can choose a different mode to fit the task at hand enabling you to work, play and binge watch for longer in comfort.



## BIG-TIME ENTERTAINMENT IN REMARKABLY THIN AND LIGHT DESIGNS.

10<sup>th</sup> Generation Intel® Core™ processors, the combination of **heavyweight performance and lightweight portability** will keep you in the flow, wherever you go.

Lenovo™



[WWW.LENOVO.COM](http://WWW.LENOVO.COM)



# ideapad S540 (13")

## SPECIFICATIONS

Lenovo IdeaPad S540-13IML\*

### PERFORMANCE

#### Processor

10<sup>th</sup> Generation Intel® Core™ i7-10710U Processor (6-Core)  
10<sup>th</sup> Generation Intel® Core™ i7-10510U Processor  
10<sup>th</sup> Generation Intel® Core™ i5-10210U Processor

#### Operating System

Windows 10 Home

#### Graphics

NVIDIA® GeForce® MX250 or MX350 25W  
Intel® Integrated Graphics

#### Camera

Slim 1 MP 720p HD IR Camera + TOF

#### Memory

Intel®: 8 GB / 16 GB DDR4; 2666 MHz;  
Dual Channel (Onboard)

#### Storage

PCIe M.2 SSD : 256 GB / 512 GB / 1 TB

#### Audio

2 x 2W Speakers, Dual Microphone<sup>1</sup>

#### Battery<sup>2</sup>

MobileMark® 2014 : Up to 18 Hours  
1080p video playback up to 20 Hours @ 150 nits  
Rapid Charge : 2 Hrs 100%, 1 Hr 80%, 56 WHr

### DESIGN

#### Display

13.3" QHD IPS (2560 x 1600), 72% NTSC,  
300-nits, 227 PPI, 16:10, 100% sRGB

#### Dimensions (W x D x H)

(mm) : 296.9 x 208.6 x 15.95  
(inches) : 11.69" x 8.21" x 0.63"

#### Weight

Dis Starting at 1.28 kg (2.82 lbs)  
UMA Starting at 1.25 kg (2.75 lbs)

#### Unique Features

Backlit Keyboard (White)  
Cortana  
Glass Touchpad  
(Ice Blue and Light Silver only)

#### Colors

Ice Blue  
Light Silver  
Frost White<sup>3</sup>

### CONNECTIVITY

#### WLAN

2 x 2 WiFi 802.11 ax  
2 x 2 WiFi 802.11 ac

#### Bluetooth®

Bluetooth® 5.0

#### Input/Output (I/O) Ports

2 x USB-C (Full Function)  
1 x USB 3.1 Gen 1 (Type A)<sup>4</sup>  
Audio Jack

### PRELOADED SOFTWARE

- McAfee<sup>5</sup>
- Lenovo Vantage<sup>5</sup>
- Microsoft Office Centennial<sup>6</sup>
- Microsoft Office JP<sup>7</sup>
- Lenovo PC Manager<sup>8</sup>
- Lenovo Antivirus Plus<sup>8</sup>
- Lenovo Utility<sup>9</sup>

<sup>1</sup> PRC variant of this product has only 1 mic.

<sup>2</sup> All battery life claims are approximate and based on two methods of testing: MobileMark® 2014 battery-life benchmark and continuous 1080p video playback on the latest update of Windows 10 (with 150 nits brightness and default volume level). Actual battery life will vary and depend on many factors such as product configuration and usage, software use, wireless functionality, power management settings, and screen brightness. The maximum capacity of the battery will decrease with time and use.

<sup>3</sup> Only available in select regions.

<sup>4</sup> The actual transfer speed of the USB 3.1 Gen 1 will vary and, depending on many factors, such as the processing capability of host and peripheral devices, file attributes and other factors related to system configuration and your operating environments, will be slower than a speed of 5 Gbit/s.

<sup>5</sup> ROW.

<sup>6</sup> Worldwide except Japan.

<sup>7</sup> Japan only.

<sup>8</sup> China only.

<sup>9</sup> Worldwide (WW).



Lenovo™

## LENOVO SERVICES

### Warranty Upgrades - On-site / In-Home Service

Maximizes PC uptime and productivity by providing convenient, fast repair services in your own home.

### Accidental Damage Protection

Avoid the hassles of unexpected repair costs. Provides coverage for non-warranted damage incurred under normal operating conditions, such as minor spills, drops or damage to the integrated screen.

### Warranty Extensions (1-to-3 Years Total Duration)

This fixed-term, fixed-cost service helps accurately budget for PC expenses, protect your valuable investment and potentially lower the cost of ownership over time.

\* Example of Lenovo IdeaPad catalogue naming convention



### Intel® platform codes

Apollo Lake: IAP, Broadwell: IBD, Braswell: IBR, Broadwell: IBW, Baytrail: IBY, Cannonlake: ICN, Haswell: IHH, Kabylake: IKB, Skylake H: ISH, Skylake: ISK, Skylake U: ISU, Skylake Y: ISY, Skylake Z: ISZ, Gemini Lake: IGM, Whiskey Lake: IWL, Comet Lake: CML, Comet Lake: IML



WWW.LENOVO.COM

Lenovo reserves the right to alter product offerings and specifications at any time, without notice. Lenovo makes every effort to ensure accuracy of all information but is not liable or responsible for any editorial, photographic or typographic errors. All images are for illustration purposes only. For full Lenovo product, service and warranty specifications visit [www.lenovo.com](http://www.lenovo.com). Lenovo makes no representations or warranties regarding third party products or services. **Trademarks:** The following are trademarks or registered trademarks of Lenovo: Lenovo, the Lenovo logo, IdeaPad, IdeaCentre, Yoga and Yoga home. Microsoft, Windows and Vista are registered trademarks of Microsoft Corporation. Ultrabook, Celeron, Celeron Inside, Core Inside, Intel, Intel Logo, Intel Atom, Intel Atom Inside, Intel Core, Intel Inside, Intel Inside Logo, Intel vPro, Itanium, Itanium Inside, Pentium, Pentium Inside, vPro Inside, Xeon, Xeon Phi, and Xeon Inside are trademarks of Intel Corporation in the U.S. and/or other countries. Other company, product and service names may be trademarks or service marks of others. Visit [www.lenovo.com/lenovo/us/en/safecomp/](http://www.lenovo.com/lenovo/us/en/safecomp/) periodically for the latest information on safe and effective computing. ©2019 Lenovo. All rights reserved.

