

NEC Ultra High Definition Large Format Displays

55", 65", 75", 86" and 98" Professional Displays w/ On Board SoC pre-loaded MediaPlayer



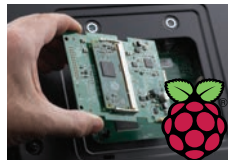
Brand new UHD displays in an aesthetically-focused design allows for seamless integration into any digital signage environment while maintaining the professional ruggedness necessary for the retail, restaurant and transportation environments

Beyond Standard Signage

With industry leading experience in superior design and customer focus, the NEC large V series allow for clear, detailed imagery for unobtrusive digital messaging. New contemporary and slim mechanical design with focused aesthetics allows for the smooth and stylistic integration into any type of environment. Their full metal chassis coupled with real-time temperature sensors and integrated cooling fans maintain the professional quality necessary for commercial environments. With an anti-glare screen and ultra high definition panel, customers can enjoy the perfect image in any circumstance. These displays come equipped with a wide range of the latest connectivity interfaces including three separate HDMI 2.0 interfaces, two separate DisplayPort interfaces and a DisplayPort Out connection to complement the native Ultra High Definition at 60Hz panel. These displays also include expandability options such as the Open Pluggable Specification (OPS) and Raspberry Pi Compute Module slots for source integration directly into the display. The NEC V Series boasts 500 cd/m² brightness that allows for efficient readability in higher ambient light situations and is ideal for 24/7 signage in airports, quick-serve restaurants, and retail.

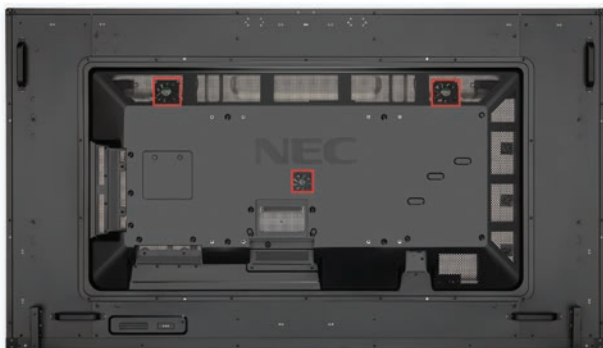
Scalable Computing Power

Integrated computing options allow for cable free signage for any type of situation. The on-board multimedia player can be utilized for simple signage applications by allowing auto-play off of USB or SD card and content transfer via LAN. For more advanced signage systems, these displays contain an industry first ability to integrate a Raspberry Pi Compute module for near limitless potential and application. Finally, each display adheres to the Open Pluggable Specification that gives the ability to seamlessly integrate a full PC, HDBaseT receiver or other options directly into the unit.



Advanced Heat Management

Monitoring and managing the temperature of each display is crucial to secure reliability and longevity. An industrial-strength, premium-grade panel with additional thermal protection, internal temperature sensors with self-diagnostics, and fan-based technology allows for 24/7 operation, and protects your display investment. Without thermal management, displays can be prone to damaging heat over time. This damaging heat will lower the picture quality and life expectancy of the product. Integrated cooling fans automatically turn on and stay on when high internal temperatures are detected. These will stay on until the heat is properly dissipated and the display remains under proper temperature thresholds.



Location of Thermal Management Cooling Fans



Anti-Glare Panel

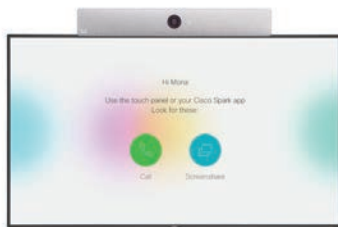
Each of the new large V series commercial displays come equipped with a high haze panel that scatters ambient lighting rather than reflecting it like most other displays. This allows for content to always be viewable and onlookers to have perfect screen readability in any situation.



Without Anti-Glare

Cisco Compatible Partner:

Full compatibility with Cisco WebEx Kit products. The Cisco WebEx Kit is a professional video conferencing tool that has everything integrated into a single soundbar including microphone(s), camera(s), the speaker and the Video Conferencing Codec. This, combined with the large format NEC displays provide the ultimate conferencing solution.



SpectraView Engine

Enhanced imaging performance through advanced settings of all relevant parameters allow full control of brightness, color, gamma and uniformity via integrated color-critical chipset.



NaViSet Administrator 2

This software is an all-in-one remote support solution that runs from a central location and provides monitoring, asset management and control functionality of the majority of NEC display devices and Windows computers. It is ideal for multi-device installations over larger infrastructures.



Aesthetically Focused Design

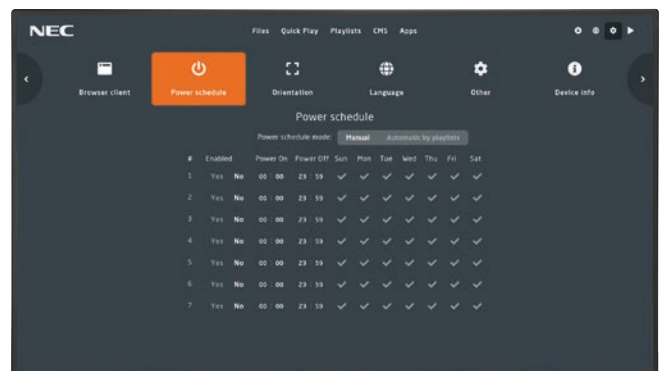
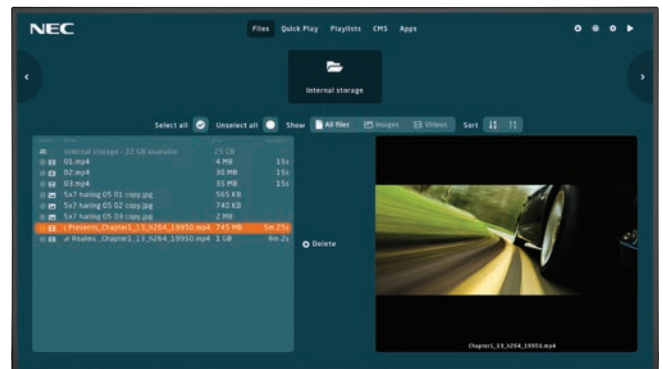
Brand new mechanical design focuses on smooth, sleek curves, thinner bezels, reduced depth and reduced overall weight while maintaining the quality and reliability for efficient 24/7 runtime capabilities.



NEC MediaPlayer

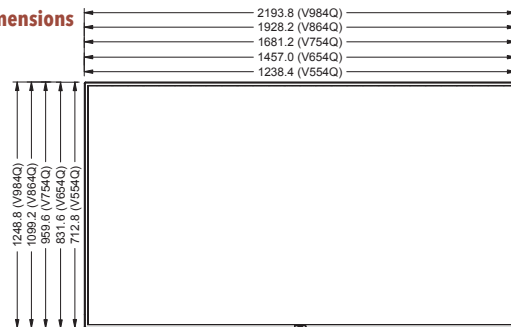
Media Player Features:

- Quickly play images and videos utilizing either external USB or internal storage
- Content preview of videos and images
- Landscape and Portrait Support
- Change content using displays human sensor
- Combine all supported file types and apps into a playlist
- Run content according to a 24hr schedule
- Gapless playback of content
- Load content over a closed network directly to the MediaPlayer
- Browser Client connection
- Stream support (RTP, UDP, HTTP)
- Arrange content into playlists
- Install partner CMS images directly from the MediaPlayer menu
- Network storage, Windows shared folder support, Samba server support
- Set display power schedule



MODEL		V554Q-MPi	V654Q-MPi	V754Q-MPi	V864Q-MPi	V984Q-MPi
LCD MODULE	Panel Technology	E-LED, S-IPS	D-LED, VA	E-LED, S-IPS		D-LED, S-IPS
	Viewable Image Size	55"	65"	75"	86"	98"
	Native Resolution	3840 x 2160				
	Brightness (Typical/Maximum)	350 cd/m ² / 500 cd/m ²				
	Contrast Ratio (Typical)	1100:1	4000:1	1200:1 native, not including localized dimming		1300:1 native, not including localized dimming
	Viewing Angle	178° Vert., 178° Hor. (89U/89D/89L/89R) @ CR>10				
	Aspect Ratio	16:9				
	Displayable Colors	Over 1.07 Billion				
	Orientation	Landscape and Portrait				
	Panel Haze (%)	28	44	28		
CONNECTIVITY	Input Terminals					
	Digital	HDMI 2.0 x3 (with HDCP), DisplayPort 1.2 x2 (with HDCP)				
	Analog	None				
	Audio	3.5mm Mini Jack, HDMI Audio x3, DisplayPort Audio x2				
	External Control	LAN (100Mbit), 3.5 Mini Jack IR Remote, RS232C				
	Data	microSD (Media Player), USB 2.0 (Media Player), USB 2.0 (Service), USB Type-B (Upstream), USB 2.0 x2 (Compute Module, USB CM1 is Powered 5V/2A)				
	Output Terminals					
	Digital	DisplayPort (Outputs DisplayPort1 and OPS (1CH DisplayPort Only))				
	Analog	None				
	Audio	3.5mm Audio Mini Jack, External Speaker x2				
POWER CONSUMPTION	External Control	LAN (100Mb)				
	On (Typ/Max Brightness/Overall Max)	120W/300W	200W/255W/365W	155W/210W/340W	230W/300W/425W	380W/520W/650W
	Network Standby	2W				
	Normal Standby	0.5W				
	Current Rating	3.4A @ 100V, 1.6A @ 240V	4.3A @ 100V, 1.8A @ 240V	4.0A @ 100V, 1.7A @ 240V	5.0A @ 100V, 2.1A @ 240V	7.5A @ 100V, 3.1A @ 240V
PHYSICAL SPECIFICATIONS	Speaker Rating	Integrated 10W x 2, Optional 15W x 2				
	Bezel Width (L/R, T/B)	11.9mm/11.9mm, 11.9mm/15.5mm	12.9mm/12.9mm, 13.1mm/13.1mm	14.8mm/14.8mm/14.8mm/14.8mm	15.3mm/15.3mm/15.3mm/15.3mm	15.9mm/15.9mm/15.9mm/15.9mm
	Net Dimensions (Without stand; W x H x D)	48.8 x 28.1 x 2.7in. 1238.4 x 712.8 x 68.9mm	57.34 x 32.7 x 3.1in. 1457.0 x 831.6 x 79.4mm	66.2 x 37.8 x 2.8in. 1681.2 x 959.6 x 71.1mm	75.9 x 43.3 x 2.9in. 1928.2 x 1099.2 x 74.3mm	86.4 x 49.2 x 3.7in. 2193.8 x 1248.8 x 93.0mm
	Net Weight (Without Stand)	59.1lbs / 26.8kg	89.9lbs / 40.8kg	115.7lbs / 52.6kg	127.2 lbs / 57.8kg	198.6 lbs / 90.0kg
SENSORS	VESA Hole Configuration	4x M6 x 12mm (300 x 300) / 8x M8 x 16mm (600 x 400, 400 x 400)				
	Ambient Light Sensor	Integrated and programmable				
	Human Sensor	Optional through KT-RC2 Accessory				
	Temperature Sensor	Integrated and programmable; linked to cooling fans				
ENVIRONMENTAL CONDITIONS	NFC Sensor	Integrated; works in conjunction with free NEC Intelligent Wireless Data Application				
	Operating Temperature	0 to 40C				
	Operating Humidity	20-80%				
LIMITED WARRANTY	Operating Altitude	3000m (9843ft)				
		3 years Advanced Replacement				
ADDITIONAL FEATURES		HDR Gamma Support (HLG nand PQ), BT2020 Color Space Support, Localized Dimming (all except V554Q), Ambient Light Sensor, AMX Support, Auto ID/Auto TileMatrix, Automated Email Alert Function, CEC Support through HDMI, Crestron Roomview Support, DICOM Simulation, Display Browser Control, Display Wall Calibrator Compatible, High Haze Panel, Image Flip, Intelligent Wireless Data (NFC), Key Guide, Media Player through Browser Control/SD Card/USB, Multi Picture Mode, NaViSet Administrator 2 Compatible, OSD Rotation for Portrait Orientation, OPS Compatible, PJ Link Support, Point Zoom Function, Power USB Port (5V/2A), Programmable LUT x3, Raspberry Pi Compute Module Compatible, Removeable Logo Ornament, Real Time Clock, SpectraView Engine Support, SNMP Support, 24-Hour Scheduler Function, Cisco Compatible				
		3m AC Power Cord, 1.8m HDMI cable, 1.8m DisplayPort Cable, IR Remote Control, Batteries, CD-ROM (User Manual)				
SHIPS WITH						
OPTIONAL ACCESSORIES		Table Top Stand (ST-401 for V554Q, ST-801 for all others), Optional Speakers (SP-TF1), All OPS Option Cards, Raspberry Pi Compute Module 1 and 3 with optional NEC Interface Board, Large Wall Mount (WMK-6598), Regular Wall Mount (WMK-3257 for V554Q, V654Q, V754Q, and V864Q only) Slim Wall Mount (WMK-3255S for V554Q and V654Q only), Human Sensor (KT-RC3)				

Dimensions



Raspberry Pi Compute Module 3+

- 1.2GHz quad-core ARM Cortex A53
- 32GB eMMC storage
- Broadcom VideoCore IV @ 400MHz GPU
- USB interface, Network 10.100 Ethernet
- 1 GB LPDDR2-900 SDRAM
- SignageOS/NEC Media Player w/ CMS Platform

Compute Module

- Compute Module Interface Board **DS1-IF10CE**
- NEC Raspberry Pi Compute Module **RPI3CM-2**



Tabletop Stand **ST-801**

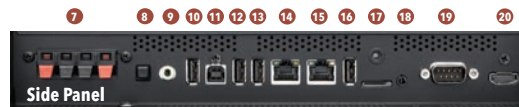


Speaker

- SP-TF1**
- SP-RM3**

Input Panels

- | | |
|-------------------------------------|-----------------|
| 1. HDMI IN2 | 1. USB CM1 (2A) |
| 2. HDMI IN3 | 2. USB CM2 |
| 3. DisplayPort IN2 | 3. LAN1 |
| 4. DisplayPort IN1 | 4. LAN2 |
| 5. DisplayPort OUT | 5. USB MP |
| 6. Audio IN | 6. microSD |
| 7. External Speaker Terminal | 7. REMOTE IN |
| 8. Internal/External Speaker Switch | 8. RS-232C |
| 9. Audio OUT | 9. HDMI IN1 |
| 10. USB1 | |
| 11. USB2 | |



MultiSync, NaViSet and TileMatrix are trademarks or registered trademarks of NEC Display Solutions, Ltd. in Japan, the United States and other countries. The terms HDMI and HDMI High-Definition Multimedia Interface, and the HDMI Logo are trademarks or registered trademarks of HDMI Licensing LLC in the United States and other countries. DisplayPort and DisplayPort Compliance Logo are trademarks owned by the Video Electronics Standards Association in the United States and other countries. HDBase™ and the HDBase Alliance logo are trademarks of the HDBase Alliance. CRESTRON and CRESTRON ROOMVIEW are trademarks or registered trademarks of Crestron Electronics, Inc. AMX is a trademark or registered trademark of AMX in the United States and other countries. VESA is a trademark of a nonprofit organization, Video Electronics Standard Association. All other trademarks are the property of their respective owners. The images in this brochure are samples. All specifications are subject to change without notice.

