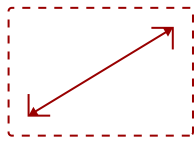


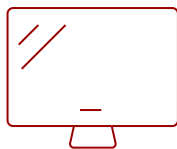
IFP7550-C4 - 75" VIEWBOARD INTERACTIVE FLAT PANEL BUNDLE WITH CHROMEBOX

Key Features

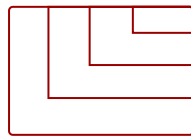
- All-in-One Solution
- ViewBoard Interactive Flat Panel
- Faster WiFi and Bluetooth
- Chromebox
- Slim Mobile Cart



75
DISPLAY



PANEL



RESOLUTION



Product Description

Ideal for education environments, this all-in-one ViewBoard Bundle includes a 75" ViewBoard IFP7550 4K interactive flat panel, a VB-WIFI-001 WiFi and Bluetooth adapter, a NMP760 Chromebox, and a VB-STND-005 stand.

Specifications

More Information

Display Type	LCD
Screen Size	75
Viewable Area (in.)	75

Light Source	LED
Display Resolution	3840 x 2160
Aspect Ratio	16:9
Static Contrast Ratio	1,200:1
Brightness	350 cd/m2
Response Time (Typical GTG)	8ms
Viewing Angles	178° horizontal, 178° vertical
Panel Surface	Anti-glare 7H tempered glass
Ethernet LAN	(10/100/1000M) (Android 10/100, PC 10/100/1000)
OS	Android 8.0
GPU	ARM Mali-G51
CPU	ARM Quad Core Cortex A73+A53
CPU Processor Speed	1.1GHz
Memory	3GB
Storage	32GB
Internal Speakers	10W (x2)
Subwoofer	15W (x1)
HDMI 2.0 In	3
HDMI Out	1
VGA	1
3.5mm Audio In	1
3.5mm Audio Out	1
SPDIF Audio Out	1
USB 3.0	4
USB 2.0	3
Slot-in PC Slot	1
USB B Touch Port	2
RS232	1
Ethernet LAN (RJ45)	1
WIFI Module Slot	1
Intel® OPS Slot In (80-pin)	1
Voltage	100-240 VAC
Consumption (typical)	138W
Stand-by	<0.5W
On Screen Display	Input, Volume, Backlight, Audio, Screen, Display, Adjust
Temperature	32-104° F (0 - 40° C)

Humidity (non-condensing)	10-90%
Touch Technology	Slim IR
Touch Points	Windows: 20, Android: 20
Tip Detection	Dual tips, 2.5mm and 8mm
Net (lbs)	118.8
Gross (lbs)	158.5
Net (kg)	53.89
Gross (kg)	71.90
Packaging (in.)	76.0 x 44.9 x 11.0
Physical (in.)	67.3 x 40.2 x 3.5
Packaging (mm)	1930.0 x 1140.0 x 280.0
Physical (mm)	1710.0 x 1020.0 x 90.0
VESA Compatible	800 x 400 mm
Warranty	3-year limited warranty on parts, labor and backlight, onsite warranty
Recycle/Disposal	Please dispose of in accordance with local, state or federal laws.
PACKAGE CONTENTS	IFP7550 display, stylus pen x 2, power cable, remote control with batteries, ViewSonic Wizard CD (User Guide), Quick Start Guide
Regulations	cTUVus, FCC, ENERGY STAR 7.0, Mexico Energy, CE, CB, RoHS, ErP, WEEE



Contact Sales
ViewSonic.com

888.881.8781
email:
salesinfo@viewsonic.com