

# EOS R5

## TECHNICAL SPECIFICATIONS



**GAME ON**

**Canon**

# EOS R5

## GAME ON



With four times the detail of 4K, EOS R5 is the world's first interchangeable lens digital camera with 8K movie capability<sup>1</sup>.

8K

World's best Image Stabilization 8-stops<sup>2</sup> with Coordinated Control IS. Combines 5-axis In Body Image Stabilizer with lens based Image Stabilizer in selected RF lenses for increased effectiveness.

IN-BODY IMAGE STABILIZER × OPTICAL IMAGE STABILIZER

100% AF coverage<sup>3</sup> with Dual Pixel CMOS AF II. Advanced Face and Eye Detect. Perfect portraits with advanced tracking of human subjects with eye, face and head detect.

Dual Pixel CMOS AF II

High speed 20fps shooting<sup>4</sup>, 45MP Full Frame CMOS & DIGIC X processing. The 45MP full frame Canon CMOS sensor offers amazing resolution for large prints and the flexibility to crop in your images.

45.0 MEGA PIXELS  
CMOS

EOS 5 series operability and reliability. You get the 5D series heritage and trust. The EOS R5 has dual card slots (CF Express + SD cards), AF joystick & rear scroll wheel and new higher capacity battery (back compatible).

EOS 5D



\*Shopper Media Survey February 2020, n=20,431

<sup>1</sup>Among all interchangeable lens digital cameras. Based on Canon research as of 9th July 2020. <sup>2</sup>Only when setting crop [Off], up to 29.97 fps / 25.00 fps. <sup>3</sup>The video recording time of the Canon EOS R5 is limited by heat. <sup>4</sup>Among all interchangeable lens digital cameras. As of 9th July 2020 (based on Canon research). <sup>5</sup>Based on the CIPA standard, 8.0 steps with RF 24-105mm F4 L IS USM at a focal distance of 105mm. <sup>6</sup>The RF 24-105mm F4 L IS USM has Coordinated IS and most IS performance. <sup>7</sup>Depending on the time of purchase, the lens firmware needs to be updated. <sup>8</sup>The Canon EOS R5's IS performance is the same as that of the Canon EOS R6. <sup>9</sup>Horizontal: 100× Vertical: 100 (Maximum approx.) – Applicable when subject frame is shown while using Face+Tracking and RF lenses (except RF600mm F11 IS STM / RF800mm F11 IS STM and Extender RF), EF lenses (excluding some current products), EXTENDER EF (III) (depends on master lens AF area mode). Some scenes and subjects may not be applicable. <sup>10</sup>Up to approx. 20 fps Electronic shutter with AF/AE tracking. – Except when using EF-S lenses. With full aperture. Refer to the Canon website for more detailed information. – Continuous shooting speed may change due to shutter speed, aperture, aperture during continuous shooting, subject, darkness (shooting in dark places), and type of lens.

# EOS R5 | FEATURES

## 5.76MP EVF

Responsive electronic viewfinder (EVF) great for burst shooting and when switching from monitor to EVF.



## 3.2" 2.1 MILLION DOT VARI-ANGLE LCD TOUCH SCREEN

The variable-angle LCD monitor makes it easier to shoot from high and low angles, or shoot in portrait orientation.



## DIGIC X

The DIGIC X provides high-speed processing which allows the EOS R5 to reach maximum shooting speeds. It also provides precise sharpness adjustment and noise reduction.

**DIGIC  
X**

## MULTI CONTROLLER (AKA AF JOYSTICK)

The multi controller facilitates quick and intuitive selection and adjustment of the AF frame.



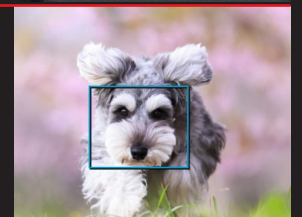
## TOP MOUNT DOT MATRIX LCD DISPLAY

Even when the monitor is turned off to save power, check various settings on this display panel and check the shooting mode.



## EYE DETECT AF + ANIMAL DETECT AF

Maintain stable focus and securely track the subject regardless of the distance and direction of the subject, or the subject's movement.



## 1X CFEXPRESS CARD + 1X SD CARD

The CFexpress card supports high-speed transfer, allowing the camera to perform continuous shooting of 45-megapixel still images, at up to 20 fps, as well as internal recording of 8K RAW movies.



**Dual Card Slots**

## HEIF FILE FORMAT

Similar in size to a JPG file, the HEIF file format provides the benefit of displaying over 1 billion colours.

**HEIF**

**Canon**

# EOS R5 | SPECIFICATIONS

APPEARANCE AND CAMERA CONTROLS		
Lens mount		RF mount
LCD panel		Dot-matrix display
Multi-controller		Yes
Quick control dial 2		Yes
Rating button		Yes
Depth-of-field preview button		Yes
PC terminal		Yes
IMAGE SENSOR		
Screen size		Full frame
Effective pixels (max. approx. megapixels)		45.0
IMAGE PROCESSOR		
		DIGIC X
STILL PHOTO RECORDING		
HEIF support (in HDR PQ shooting)		Yes
Focus bracketing (depth compositing)		Yes
Dual Pixel RAW		Yes
Maximum burst	RAW	SD card: 66 CFexpress card: 180
	JPEG Large / Fine	SD card: 190 CFexpress card: 350
Possible shots (at 23°C / 73°F, Screen, Smooth)		320
MOVIE RECORDING		
Movie recording size	8K DCI / UHD	Yes
	4K High Frame Rate (119.88 / 100.00)	Yes
	4K UHD (59.94 / 50.00)	Yes
	4K DCI 59.94, 29.97, 24.00, 23.98/50.00, 25.00, 24.00	Yes
	4K UHD (29.97, 23.98 / 25.00)	Yes
	Full HD (59.94, 29.97, 23.98 / 50.00, 25.00)	Yes
	RAW movies	Yes
	4K HQ mode movies	Yes
HDR PQ for movies		Yes
Time-lapse movies		8K / 4K / Full HD
Canon Log	Bit depth	10 bit
	Exposure control	P / Tv / Av / M
	ISO Auto setting	Yes
	10-bit internal (card) recording	Yes
Built-in microphone		Monaural

# EOS R5 | SPECIFICATIONS (CONTINUED)

IMAGE PROCESSING		
Picture Style		Yes (Default value changed)
Clarity		Yes
VIEWFINDER		
Type		Electronic viewfinder (EVF)
Dot count (approx.)		5.76 million dots
Viewfinder refresh rate (max.)		119.88 fps
Brightness adjustment		Yes
Colour tone adjustment		Yes
Fine-tuning colour tone		Yes
MONITOR		
Dot count (approx.)		2.1 million dots
Screen/viewfinder display (options based on whether screen is open)		Yes
Brightness adjustment		Yes
Colour tone adjustment		Yes
Touch-based menu screen magnified view		Yes
AUTOFOCUS		
AF method	Face+Tracking	Yes
	Spot AF	Yes
	1-point AF	Yes
	Expand AF area (above, below, left and right / around)	Yes
	Zone AF	9 x 9
	Large Zone AF vertical (max.)	9 x 21
	Large Zone AF horizontal (max.)	31 x 9
AF zone	Horizontal: Approx. 100%, Vertical: Approx. 100%	Yes
	Horizontal: Approx. 90%, Vertical: Approx. 100%	Yes
	Horizontal: Approx. 80%, Vertical: Approx. 80%	Yes
	Horizontal: Approx. 40%, Vertical: Approx. 60%	Yes
Eye detection (= Eye Detection AF)		Eye detection
Number of AF divisions available for automatic selection (max.): Still photos		39 x 27 (1053 divisions)
AF zone		Horizontal: Approx. 100%, Vertical: Approx. 100%

# EOS R5 | SPECIFICATIONS (CONTINUED)

Focusing brightness range *Except RF lenses with a Defocus Smoothing (DS) coating	Still photos (with an f/1.2 lens, center AF point, One-Shot AF, at 23°C / 73°F and ISO 100)	EV -6 to 20
	Movies (with an f/1.2 lens, center AF point, One-Shot AF, at 23°C / 73°F, ISO 100, and 29.97 fps)	8K: EV -3 to 20 4K/Full HD: EV -4 to 20
Touch & drag AF		Yes
Servo AF characteristics (in still photo shooting)		Yes
Subject tracking settings	Subject to detect	People / Animals / No priority
<b>EXPOSURE CONTROL</b>		
Still photo modes		A+ / Fv / P / Tv / Av / M / B / C1 / C2 / C3
Movie modes		A+ / P / Tv / Av / M / C1 / C2 / C3
ISO speed (still photos)	Normal	100–51200
	Expansion for lower speeds (ISO equivalent)	L: 50
	Expansion for faster speeds (ISO equivalent)	H: 102400
ISO speed (normal movies)	Normal	100 to 25600
	Expansion for faster speeds (ISO equivalent)	H: 51200
Metering brightness range	Still photos (at 23°C/73°F, ISO 100)	EV -3 to 20
	Movies (at 23°C/73°F, ISO 100, center-weighted average metering)	EV -1 to 20
Zebra display (in movie recording)		Yes
Multiple-exposure simulation		Yes
<b>FLASH</b>		
Continuous shooting priority (CSP) mode		Yes
Safety FE		(Automatically activated in continuous shooting priority mode)
E-TTL balance		Yes
Continuous flash control		Yes
<b>SHUTTER</b>		
Shutter mode	Mechanical shutter	Yes
	Electronic 1st curtain	Yes
	Electronic shutter	Yes
Selection of shutter shutdown state		Yes
Shutter speed		1/8000–30 sec. Mechanical: X-sync at 1/200 sec. Elec. 1st-curtain: X-sync at 1/250 sec.

# EOS R5 | SPECIFICATIONS (CONTINUED)

CONTINUOUS SHOOTING SPEED		
High-speed continuous shooting +	Mechanical shutter / Electronic 1st-curtain	12 (in A mode)
High-speed continuous shooting	Mechanical shutter	6.0 (in A mode)
	Electronic 1st curtain	8.0 (in A mode)
Low-speed continuous shooting	Mechanical shutter / Electronic 1st-curtain	3.0
High-speed continuous shooting +	Electronic shutter	20
High-speed continuous shooting	Electronic shutter	20
Low-speed continuous shooting	Electronic shutter	20
TIMER SHOOTING		
Bulb timer		Yes
Interval timer		Yes
Movie self-timer		Yes
IMAGE STABILIZATION (IS MODE)		
Controlled by lenses		Yes
Controlled by camera		Yes
Co-ordinated control		Yes
IS effectiveness, in number of stops (still photos)	IS-equipped lenses (co-ordinated control)	8.0 stops
Movie digital IS		Yes
Based on focal length (with lenses from which focal length data cannot be acquired)		Yes
IMAGE PROCESSING AFTER SHOOTING		
DPRAW processing (portrait relighting, background clarity)		Yes
RAW image processing	Adjust face lighting (Auto Lighting Optimizer)	Yes
	Clarity	Yes
HEIF→JPEG conversion		8K / 4K
Voice memo		Yes
EXTERNAL INTERFACE		
DPRAW processing (portrait relighting, background clarity)		USB Type-C
Wireless File Transmitter support		Yes
POWER SOURCE		
Overheat control (for movies)		Yes
USB Power Adapter PD-E1	Charging	Yes
	Powering	Yes

# EOS R5 | SPECIFICATIONS (CONTINUED)

## WIRELESS COMMUNICATION

image.canon automatic upload Yes

5 GHz Wi-Fi support Yes

## RECORDING MEDIA

Recording media CFexpress card / SD, SDHC, SDXC memory cards

Card slots 2

## DIMENSIONS AND WEIGHT

Dimensions (approx. width x height x depth in mm, based on CIPA standards) 138.5 x 97.5 x 88.0

Weight (approx. \*\* g including battery and memory cards) 738





**Canon**

[www.canon.com.au](http://www.canon.com.au)