

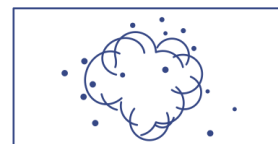
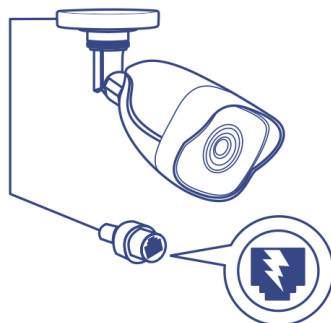
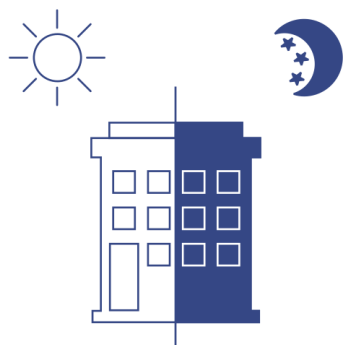


Indoor/Outdoor 4MP H.265 PoE IR Bullet Network Camera

TV-IP1328PI (v1.0R)

- 4MP HD video (2560 x 1440) at 20 fps
- Night vision up to 30m (98 ft.)
- Outdoor IP67 weather rated housing
- Save installation costs with Power over Ethernet (PoE)
- 120dB Wide Dynamic Range image balancing
- Program motion detection with email alerts
- Free iOS® and Android™ mobile apps

TRENDnet's Indoor/Outdoor 4MP H.265 WDR PoE IR Bullet and Dome Network Cameras provide day and night surveillance with a night vision range of up to 30m (98 ft.) These compact network cameras deliver year-round surveillance, each with an IP67 weather rated housing to withstand harsh outdoor environments. Record up to 4MP HD video at 20fps in a space-saving H.265 compression format. Setup and view live video with included complimentary software and mobile apps.



Day/Night HD Surveillance

Powerful 4MP video in H.265 compression and 30m night vision provides 24-hour surveillance. Masked IR LEDs provide covert night-time viewing.

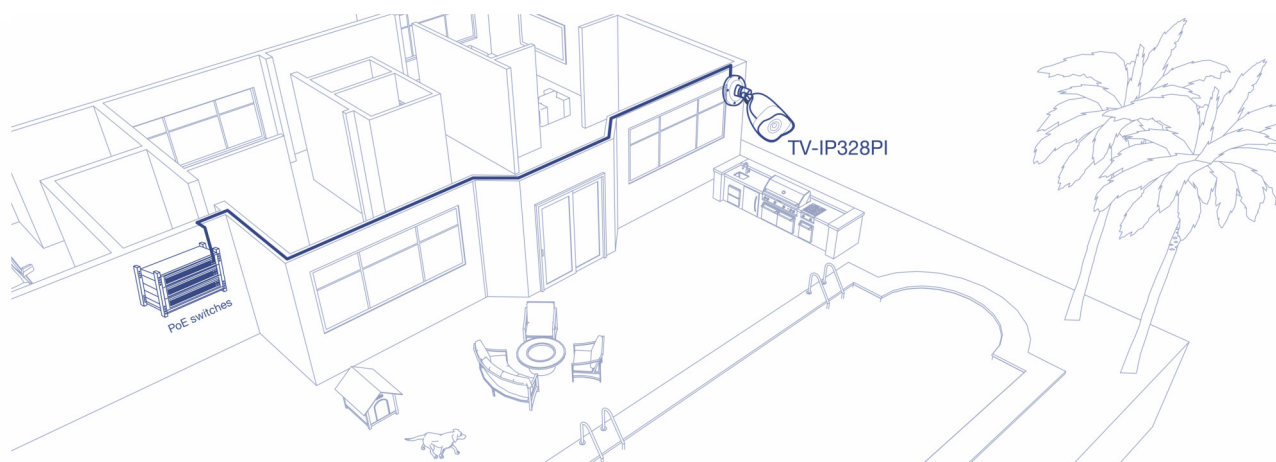
Power over Ethernet (PoE)

PoE offers cost savings and the flexibility to install the surveillance camera up to 100m (328 ft.) from your PoE source equipment.

Outdoor Ready

Built for outdoor environments with an IP67 weather rating and an operating temperature range of -30° – 50° C (-22° – 122° F).

NETWORKING SOLUTION



FEATURES



4 Megapixel

Record up to 4MP HD video at 20fps in space-saving H.265 compression format



Night Vision

Masked IR LEDs provide covert night-time viewing invisible to the human eye, up to 30m (98 ft.)



Smart IR

Smart IR dynamically adjusts the IR LEDs by lowering the IR intensity when objects are near, and increasing IR intensity when objects are farther away



PoE

Save installation costs with Power over Ethernet (PoE)



Outdoor Ready

Outdoor IP67 weather rated housing



Adjustable Mounting Base

Fully adjustable integrated mounting base provides installation flexibility



Motion Detection

Create custom motion detection zones to record video and send email notifications when a zone is triggered



Tamper Detection

Create custom tamper detection zones to send an email notification when the camera view has been obstructed



Wide Dynamic Range (WDR)

Adjustable Wide Dynamic Range (WDR) setting improves image quality and clarity when a camera is exposed to high contrast lighting environments by enhancing the dark areas of the image to make them more visible



Recording Flexibility

Define custom schedules using continuous (24/7) and event-based recording modes



ONVIF

ONVIF Profile S and Profile G



Complimentary VMS Software

Complimentary pro-grade software to manage TRENDnet cameras



Complimentary Apps

Live video to a mobile device with free iOS® and Android™ apps

SPECIFICATIONS

Lens

- Focal length: 4mm @ F1.2
- Sensor: 1/3" CMOS sensor
- Digital zoom
- WDR: 120dB

Viewing

- Horizontal angle: 77°

3-Axis Manually Adjustable Mounting Arm

- Pan: 0° to 360°
- Tilt: 0° to 180°
- Rotate: 0° to 360°

Minimum Illumination

- IR off: 0.01 lux
- IR on: 0 lux
- IR distance: 30m (98 ft.)
- IR LED wavelength: 850nm

Compression

- H.265+ / H.265
- H.264+ / H.264
- MJPEG

Resolution

- Main stream: H.265+/H.265/H.264+/H.264: 2560 x 1440 up to 20fps
- Sub stream: H.265/H.264/MJPEG: 640 x 480 up to 30fps
- Third stream: H.265/H.264: 1280 x 720 up to 10fps

Hardware Standards

- IEEE 802.1x
- IEEE 802.3
- IEEE 802.3u
- IEEE 802.3x
- IEEE 802.3af

Network Protocol

- IPv4, IPv6, UDP, TCP/IP
- DHCP, NTP, DDNS, SMTP, FTP, LLTD
- SNMP v1, v2c, v3, QoS/DSCP, IEEE 802.1X
- NFS, SMB/CIFS
- HTTP, HTTPS
- PPPoE
- UPnP, RTSP, RTP

Compliant Standard

- ONVIF (Profile S, Profile G)

Management Interface

- Multi-language support: English, French, German, Spanish, and Portuguese
- Image settings: Brightness, Contrast, Saturation, Sharpness, Exposure Time, image Gain, Day/Night switch, Smart IR, BLC, WDR, white balance, Digital Noise Reduction, Mirror, Rotate, Scene Mode, Video Standard
- WDR enhances video quality in high contrast daytime lighting
- Digital Noise Reduction removes digital noise from the video signal
- Recording: to computer, or SAMBA share
- Time, date, and text overlay
- IP Address Filter
- Video Recording: scheduled, motion detection, and tamper detection
- Motion detection: define up to three motion detection areas and motion sensitivity
- Privacy masks: define custom privacy masks
- Tamper detection function: email notification
- Snapshot: real time snapshot and motion triggered
- Supported dynamic DNS services: dyn.com and no-ip.com
- Supports remote management
- Compatible browsers: Chrome™ or Firefox® (live view resolution up to 1280 x 720), Internet Explorer® (live view resolution up to 2560 x 1440)

Device Interface

- 10/100Mbps PoE port
- Power jack

Housing

- IP67 weather rated

Dimension

- 173 x 70 x 70mm (6.8 x 2.75 x 2.75 in.)

Weight

- 280g (9.9 oz.)

Operating Temperature

- -30° – 50° C (-22° – 122° F)

Humidity

- Max. 95% non-condensing

Power

- Input: PoE
- Max. consumption: 7W

Power Adapter (optional model: 12VDC1A)

- Input: 100 – 240V AC, 50/60Hz
- Output: 12V DC, 1A external power adapter

TRENDnet Mira VMS

- Supports TRENDnet cameras
- Set recording options (motion detection, schedule, event trigger)
- Search and playback
- Custom viewing modes and options
- Compatibility: Windows® and Mac®

TRENDnet Mira App

- Free iOS® and Android™ apps
- View live camera video
- Push notifications
- Take snapshots and videos
- Playback
- Share live view to family members or friends

Certifications

- CE
- FCC
- UL

Warranty

- 3 year

Package Contents

- TV-IP1328PI
- Weather seal
- Quick installation guide
- Camera mounting hardware

All references to speed are for comparison purposes only. Product specifications, size, and shape are subject to change without notice, and actual product appearance may differ from that depicted herein.