

# Vertiv™ Avocent® MergePoint Unity™ Switch



## Benefits

- Remote access to KVM, USB and serial connections
- Serial adaptors support SSH connections
- Serial adaptors support the Cisco pinout to make connections to Cisco equipment quick and easy
- Virtual media enables remote USB connections and support for smartcard/CAC readers
- Built-in Web interface for standalone applications or can be managed with the Vertiv™ Avocent® DSView™ 4 management software\*
- Local and remote browser interface for easy setup and use
- FIPS 140-2 compliance: Based on the FIPS 140-2 validated cryptographic module(s) (Certificate #1051)

*The Vertiv™ Avocent® MergePoint Unity™ switch is the fourth-generation KVM over IP switch from Avocent solutions.*

This switch provides IT administrators a complete remote management solution to access and control servers, networking equipment and other devices found in data centers and branch offices.

The Vertiv Avocent MergePoint Unity switch enhances the in-band management typically done through the NIC of IT equipment by providing secure and remote out-of-band connections directly to the physical KVM, USB and serial ports. This unified approach enables IT administrators a faster method to diagnose, reconfigure or restore equipment to meet SLAs and minimize downtime.

## Improve Remote Management and Staff Efficiency

- Reduce the time required to remotely diagnose/reconfigure/repair/restore servers as well as network devices and other hardware with serial configuration and/or management consoles.
- Complement in-band tools to create a more complete remote management solution to access servers and network equipment at remote locations.

- Virtual media enables remote USB connections to map CD-ROM and other USB mass storage devices directly to remote servers to transfer/copy files, load updates or install new applications, etc.

Integrated serial device support allows secure SSH connections to the physical serial ports of devices attached to the MPUIQ-SRL module. The Cisco configuration settings electronically pin out the module to enable a fast and direct connection to Cisco configuration ports, without the need for any additional external wiring adapters or special wiring.

## Improve Physical Security

- Remote smart card/CAC reader support is provided for advanced security requirements. Using the virtual media capabilities of the Vertiv Avocent MergePoint Unity switch, a smart card reader can be mapped from a desktop PC out to a remote server.
- Reduce the need to physically enter the data centers for local access and control. The Vertiv Avocent MergePoint Unity switch provides remote users the capabilities of a direct physical connection from anywhere to KVM, USB and serial ports of servers and other IT equipment.

## Avocent® Solutions Can Help You Answer Questions Like:

- How can I access a remote server that is having an OS or network connectivity issue?
- If a server drops off the network, how can I quickly determine the cause and restore connectivity?
- How can I access a remote server to restart a service or stop a runaway process if my remote software tools cannot make a connection?
- How can I use smart card readers for computer authentication if I am using remote hardware such as digital KVM switches?
- When working on remote server OS or application issues, how can I transfer data or load a new application if the network connection on that device is down or unavailable?
- How can I access the configuration port of a network router or switch that is off-line without having to take my laptop and a serial cable into the data center?



Vertiv™ Avocent® MergePoint Unity™ 32-port switch

## Overview

### Mechanical

**Size:** HxWxD

1.72 in. (4.37 cm) H

17 in. (43.18 cm) W

16- or 32-port models: 13.38 in. (34 cm) D

8-port models: 9.2 in. (23.4 cm) D

**Weight:**

8-port single power: 6.3 lbs. (2.86 Kg)

8-port dual power: 6.8 lbs. (3.08 Kg)

16- and 32-port dual power: 8.6 lbs. (3.9 Kg)

### Ports/Connections

**Network:** Number: 2

Type: 10/100/1000 Ethernet

**Power Control Ports:** Number: 2

Type: RS232 serial

Connector: 8-pin modular

**Device Ports:** Number: 8, 16 or 32

Connector: 8-pin modular

**Local Console:** Number: 1

Connector: USB and VGA

**Supported Target Video:** VGA, DVI-I,

Display Port and HDMI

### Power Supply

**Number:** Single or dual power supplies

**Type:** Internal

**AC input range:** 100-240V

### Video Resolution

Maximum local video resolution 1920x1080;  
maximum remote resolution 1440x900

### Standards

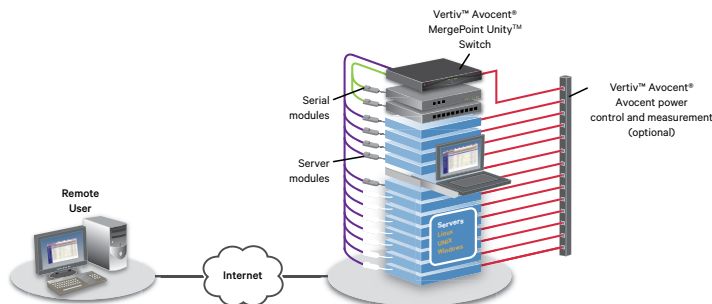
Approved Agency:

UL, FCC, cUL, ICES-003,  
CE, VCCI, KCC, C-Tick, GOST.

\* MPU108 is EAC Approved

### Warranty

Two Years



## Ordering Details

Part Number	Description
MPU108EDAC-001	8-port, 1 digital KVM path, dual AC power supply
MPU108EDAC-G01**	8-port, 1 digital KVM path, dual AC power supply
MPU108EDAC-400**	8-port, 1 digital KVM path, dual AC power supply
MPU1016DAC-001	16-port, 1 digital KVM path, dual AC power supply
MPU1016DAC-G01**	16-port, 1 digital KVM path, dual AC power supply
MPU2016DAC-001	16-port, 2 digital KVM paths, dual AC power supply
MPU2016DAC-G01**	16-port, 2 digital KVM paths, dual AC power supply
MPU2016DAC-400**	16-port, 2 digital KVM paths, dual AC power supply
MPU2032DAC-001	32-port, 2 digital KVM paths, dual AC power supply
MPU2032DAC-G01**	32-port, 2 digital KVM paths, dual AC power supply
MPU2032DAC-400**	32-port, 2 digital KVM paths, dual AC power supply
MPU4032DAC-001	32-port, 4 digital KVM paths, dual AC power supply
MPU4032DAC-G01**	32-port, 4 digital KVM paths, dual AC power supply
MPU4032DAC-400**	32-port, 4 digital KVM paths, dual AC power supply
MPU8032DAC-001	32-port, 8 digital KVM paths, dual AC power supply
MPU8032DAC-G01**	32-port, 8 digital KVM paths, dual AC power supply
MPU8032DAC-400**	32-port, 8 digital KVM paths, dual AC power supply

### Cables and Accessories (One Required Per Attached Device)

MPUIQ-VMCDV	Server Interface Module for DVI video, USB keyboard/mouse supporting virtual media, CAC and USB2.0. Used with Avocent® MergePoint Unity™ switch.
MPUIQ-VMCDV-G01	Server Interface Module for DVI video, USB keyboard/mouse supporting virtual media, CAC and USB2.0. Used with Avocent MergePoint Unity switch. TAA
MPUIQ-VMCDP	Server Interface Module for DisplayPort video, USB keyboard/mouse supporting virtual media, CAC and USB2.0. Used with Avocent MergePoint Unity switch.
MPUIQ-VMCDP-G01	Server Interface Module for DisplayPort video, USB keyboard/mouse supporting virtual media, CAC and USB2.0. Used with Avocent MergePoint Unity switch. TAA compliant.
MPUIQ-VMCHD	Server Interface Module for HDMI video, USB keyboard/mouse supporting virtual media, CAC and USB2.0. Used with Avocent MergePoint Unity switch.
MPUIQ-VMCHD-G01	Server Interface Module for HDMI video, USB keyboard/mouse supporting virtual media, CAC and USB2.0. Used with Avocent MergePoint Unity switch. TAA compliant.
MPUIQ-SRL	Avocent MergePoint Unity serial IQ (requires power from USB source or optional UPD-AM)*
UPD-AM	Power supply for MPUIQ-SRL modules; each UPD-AM can power up to four serial interface modules
MPUIQ-VMCHS	Virtual media server interface module for VGA video and USB 2.0 with 14-inch cable
DSAVIQ-PS2M	Virtual media server interface module for VGA video, PS/2 keyboard and mouse and
SFIQ-VGA	Small Form Factor Server Interface Module for VGA, USB keyboard, mouse. Supports virtual media, CAC and USB 2.0
SFIQ-VGA08	Small Form Factor, Server Interface Module for VGA, USB keyboard, mouse. Supports virtual media, CAC and USB 2.0 (8 pack)

Note: Legacy DSRIQs are also supported, please contact an Avocent sales representative for more information.

\* For use with Vertiv™ Avocent® MergePoint Unity™ switches only

\*\* TAA compliant