

Lenovo Legion 5 15IMH05H 81Y6005TUK

Product

Lenovo Legion 5 15IMH05H

Region

WE

Country/Region

UK Group

Machine Type

81Y6

Processor

Intel Core i5-10300H (4C / 8T, 2.5 / 4.5GHz, 8MB)

Graphics

NVIDIA GeForce RTX 2060 6GB GDDR6

Chipset

Intel HM470

Memory

1x 8GB SO-DIMM DDR4-2933

Storage

256GB SSD M.2 2280 PCIe NVMe

Display

15.6" FHD (1920x1080) IPS 300nits Anti-glare, 144Hz, 100% sRGB Gamut, Dolby Vision

Touchscreen

None

Optical

None

Media Reader

None

Ethernet

100/1000M

WLAN + Bluetooth

11ax, 2x2 + BT5.0

Bundled Accessories

None

Case Material

PC / ABS

Camera

720p

Microphone

2x, Array

Color

Phantom Black

Keyboard

Backlit, English (UK)

Fingerprint Reader

None

TPM

FW TPM 2.0

Battery

Integrated 80Wh

Power Adapter

230W Slim Tip

Operating System

Windows 10 Home 64, English

Bundled Software

Office Trial

Base Warranty

1-year, Depot

Bundled Service

None

EAN / UPC / JAN

195042339185

End of Support

2026-05-27

Announce Date

2020-05-18



WWW.LENOVO.COM

Lenovo may not offer the products, services or features discussed in this document in other countries. Lenovo may withdraw an offering at any time. Information is subject to change without notice. Consult your local representative for information on offerings available in your area.

Lenovo reserves the right to change specifications or other product information without notice. Lenovo is not responsible for photographic or typographical errors.

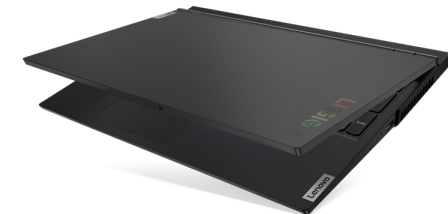
Lenovo provides this publication "as is" without warranty of any kind, either express or implied, including the implied warranties of merchantability or fitness for a particular purpose.



<https://psref.lenovo.com>

Visit psref website for the latest version of Product Specifications Reference.

© Lenovo, 2020. All rights reserved.



Lenovo™

Lenovo Legion 5 15IMH05H Platform Specifications

Product Specifications Reference (PSREF)

| | | | | | | | | | | | |
|---------------|--|------------|---|----------------|---------------------|-------|--------------|--------------------|---|--|---------------|
| Processor | 10th Generation Intel® Core™ i5 / i7 Processor | | | | | | | | Media reader Ports | None Four USB 3.1 Gen 1 (one Always On), one USB 3.1 Type-C Gen 1 (with the function of DisplayPort 1.2), HDMI 2.0, Ethernet (RJ-45), headphone / microphone combo jack, security keyhole, AC power adapter jack <i>* Depending on many factors, actual data transfer speed may be lower than theoretical speed</i> <i>Optional: Lenovo Legion M300 RGB Gaming Mouse (USB connector)</i> | |
| | Processor Number | # of Cores | # of Threads | Base Frequency | Max Turbo Frequency | Cache | Memory Types | Processor Graphics | | | |
| | i5-10300H | 4 | 8 | 2.5 GHz | 4.5 GHz | 8MB | DDR4-2933 | Intel UHD Graphics | | | |
| | i7-10750H | 6 | 12 | 2.6 GHz | 5.0 GHz | 12MB | | | | | |
| i7-10875H | 8 | 16 | 2.3 GHz | 5.1 GHz | 16MB | | | | | | |
| Graphics | Integrated Graphics | | Discrete Graphics (Memory) | | | | | | Camera | 720p HD, 1.0MP resolution, privacy shutter, fixed focus, integrated dual array microphone HD Audio, Realtek ALC3287 codec / Dolby Atoms® for Gaming Certification, Harman speakers, 2W x 2, dual array microphone, headphone / microphone combo jack | |
| | Intel UHD Graphics | | NVIDIA® GeForce® GTX 1660 Ti (6GB GDDR6 memory), VR ready NVIDIA GeForce RTX 2060 (6GB GDDR6 memory), VR ready | | | | | | | | Audio support |
| | supports external digital monitor via HDMI or USB Type-C; supports three independent displays; Max resolution: 4096x2160@60Hz (HDMI); 3840x2160@30Hz (USB Type-C) | | | | | | | | | | |
| Chipset | Intel HM470 Chipset | | | | | | | | Keyboard | 6-row, multimedia Fn keys, white backlight or 4-Zone RGB LED backlight, numeric keypad, anti-ghost | |
| Memory | 16GB max offering / 2933MHz DDR4, dual-channel capable, two DDR4 SO-DIMM sockets | | | | | | | | Touchpad | Buttonless Mylar surface multi-touch touchpad | |
| Display | <i>One of the following, configurable by model:</i> <ul style="list-style-type: none">15.6" (396mm) FHD (1920x1080), anti-glare, LED backlight, IPS, 250 nits, 16:9 aspect ratio, 45% NTSC gamut, refresh rate 120Hz15.6" (396mm) FHD (1920x1080), anti-glare, LED backlight, IPS, 300 nits, 16:9 aspect ratio, 100% sRGB gamut, refresh rate 60Hz15.6" (396mm) FHD (1920x1080), anti-glare, LED backlight, IPS, 300 nits, 16:9 aspect ratio, 100% sRGB gamut, refresh rate 144Hz, Dolby® Vision15.6" (396mm) FHD (1920x1080), anti-glare, LED backlight, IPS, 500 nits, 16:9 aspect ratio, 100% sRGB gamut, refresh rate 240Hz, Dolby Vision | | | | | | | | Security | Power-on password, hard-disk password, supervisor password, security keyhole | |
| Multi-touch | None | | | | | | | | Security chip | Firmware TPM 2.0 integrated in chipset | |
| Storage | <i>Up to 2 drives:</i> <ul style="list-style-type: none">HDD / SATA 6.0Gb/s, 2.5" wide, 7mm highM.2 2280 SSD / PCIe NVMe, PCIe 3.0 x 4M.2 2242 SSD / PCIe NVMe, PCIe 3.0 x 4 | | | | | | | | Fingerprint reader | None | |
| Optical | None | | | | | | | | Battery | Integrated Li-Polymer 60Wh or 80Wh battery, supports Rapid Charge Pro (30 minutes 50%) <i>MobileMark® 2018: 7.7 hr (80Wh) or 6.8 hr (60Wh)</i> <i>* Battery life varies significantly with hardware configurations, settings, usage, & other factors</i> | |
| Ethernet | Gigabit Ethernet connection | | | | | | | | Max battery life | | |
| WLAN | 802.11ax 2x2 Wi-Fi + Bluetooth 5.0, M.2 Card | | | | | | | | AC adapter | 230W slim tip AC adapter | |
| Bluetooth™ | Bluetooth 5.0 wireless, integrated in Wi-Fi + Bluetooth combo adapter | | | | | | | | Preload (optional) <i>Preloaded operating system</i> <ul style="list-style-type: none">Windows® 10 Home 64Windows 10 Pro 64 <i>Preloaded applications (only some listed)</i> <ul style="list-style-type: none">Microsoft Office Trial (with 30-day license)Microsoft Office Home and Business 2019Microsoft Office Home and Student 2019Microsoft 365 FamilyMicrosoft 365 PersonalMicrosoft Office Professional 2019Microsoft Office Personal 2019 | | |
| Dimensions | WxDxH: 14.3" x 10.22" x 0.93-1.03"; 363.06mm x 259.61mm x 23.57-26.1mm | | | | | | | | Limited warranty | <i>One of the following, configurable by model:</i> <ul style="list-style-type: none">1-year depot repair service1-year depot repair with 2-year system board repair service2-year/1-yr battery depot repair service | |
| Weight | Starting at 5.42 lb / 2.46 kg | | | | | | | | Environment | ErP lot3; RoHS-compliant | |
| Case color | Phantom black | | | | | | | | | | |
| Case material | PC/ABS plastic | | | | | | | | | | |
| Lighting | Legion "Y" logo with white backlit on display cover | | | | | | | | | | |

Note: The specifications above may not be available in all regions.

Lenovo
June 2020

Lenovo™

Lenovo Legion 5 15IMH05H

Lenovo™

