



# Samsung Business TV

## BET series

A TV built for your business

**SAMSUNG**

## Industry trend

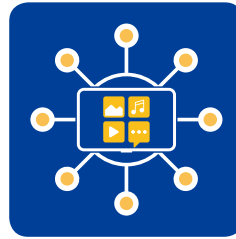
As visual display technology continues to improve, TV's with advanced visual capabilities have become less cost prohibitive for businesses of all sizes, including small retailers, family-owned and home-based businesses, providing a significant market opportunity. In today's media-saturated and technology-friendly businesses environment, many small business owners want to directly manage their own digital and video channels, leaving behind outdated and costly printed materials previously used for customer communication. However, small business owners are time-strapped and often with limited resources, meaning any new solution needs to be simple and affordable, quickly integrating into their business.



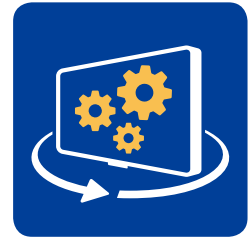
Picture quality



Business grade



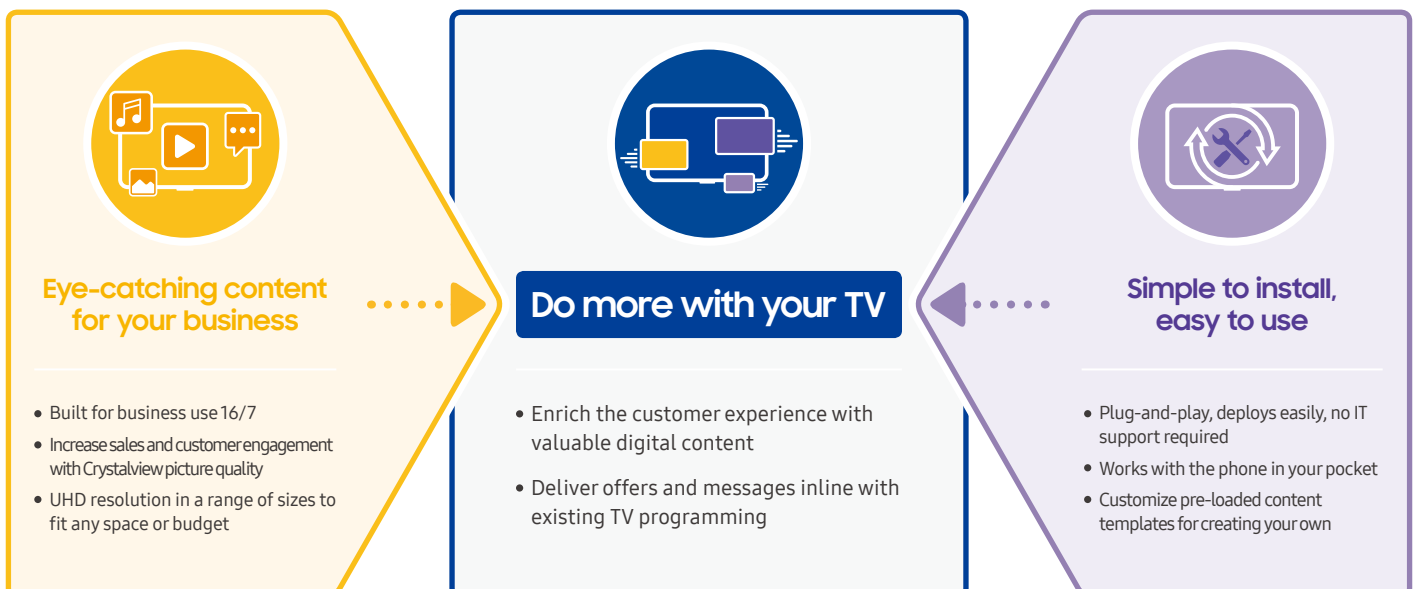
Content management solution



Simplified operation

## Why Samsung Business TV

Samsung is a recognized global leader in visual display technology, creating industry-leading TV's and commercial visual displays designed to captivate potential customers and provide ultimate value to the business. Business TV from Samsung brings together Samsung's expertise in commercial signage displays with its advanced TV technology to give users the ideal solution for customer communication with impactful visuals. Engineered to operate 16 hours a day, 7 days a week the display also features an extended warranty guaranteeing that users are always getting the most from their TV. Additionally, the Business TV app eliminates additional cost of an additional content management solution. Easy setup and streamlined operation with no additional equipment required — just a helpful integration with users' personal devices — make Business TV ideal for any small business.



# Solution for a wide range of business needs

Samsung's Business TV provides flexible functionality suited for a wide range of retail stores and businesses looking to do more with their TV, while not overburdening staff with complicated features. From menu boards to providing advertising and promotion alongside TV programs, Business TV from Samsung is the perfect solution for businesses looking for a straightforward and effective way to communicate with their customers.

## Coffee and beverage



## Drugstore



## Beauty shop



## Footwear store



## Telco retailer



## Medical service



## Do more with your TV



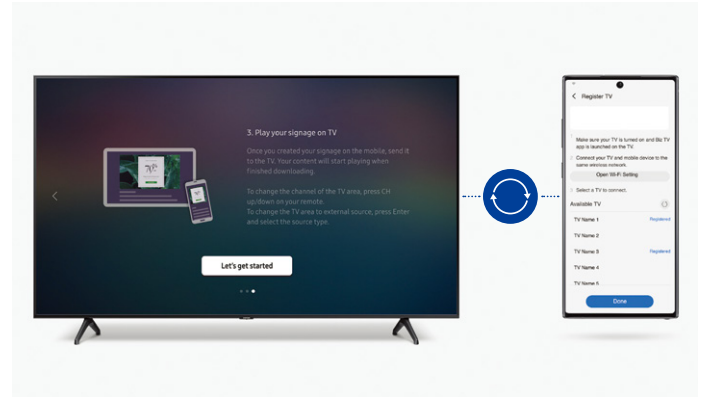
Business TV from Samsung is the ideal display solution for small businesses, allowing users to communicate with customers without the need for physical paper materials. Simple, ready-to-use content templates allow users to showcase personalized content alongside TV programming.

## Eye-catching content for your business

The image shows a Samsung Business TV displaying a fashion advertisement for 'Spring & Summer 2020 First Look'. The ad features a woman with colorful hair and a hand on her face. The text on the screen includes 'SPRING & SUMMER 2020', 'FIRST LOOK', and 'Get a first look at the latest styles in our Spring/Summer 2020 collection'. The TV is surrounded by clothing racks, and there are inset images showing the TV's display quality compared to a conventional TV. Below the TV are five icons representing its features: HDR, Crystal Processor 4K, UHD resolution, 16/7 Operation, and Various size option.

Samsung's Business TV lineup delivers an eye-catching visual experience with UHD resolution in a range of sizes to fit any space or budget. Crystal Display ensures optimized color expression and High-Dynamic Range improves brightness levels to better catch the attention of potential customers. Featuring an impressive warranty, Business TV displays are reliable and built to operate even with extended daily business hours, 16 hours a day, 7 days a week.

# Simple to install, easy to use



## Control content with your personal device

Samsung Business TV app, available for Android and iOS devices, provides convenience by allowing users to remotely manage and control content on connected Business TVs.

\* Image simulated for illustration purposes

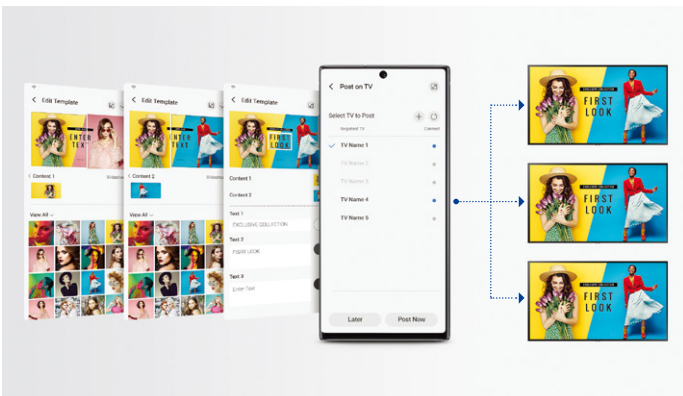
## Simple setup in minutes

Set up could not be easier. Samsung's Business TV comes preloaded with a step-by-step tutorial that automatically begins when users first turn the TV on. After downloading the business TV app, users' devices are automatically connected to the TV and available for immediate use.



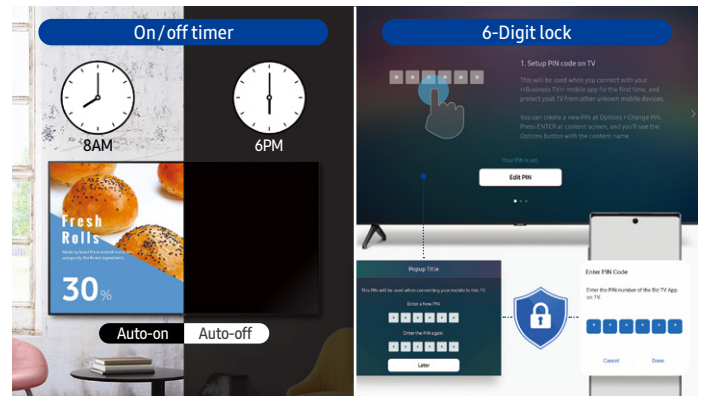
## Design content with the click of a button

Small businesses can save time and money with Business TV's more than 100 pre-loaded content templates including vertical orientation, L-Bar layouts, motion-embedded, seasonal sale and other pre-designed promotions and advertisements for do-it-yourself content management.



## Easy content management

An incredibly simple interface allows you to edit, review, finalize and deploy content — even across multiple displays — with just a few quick taps.



## Focus on your business, not your TV

Spend less time dealing with technical issues. An on/off timer allows the TV to automatically operate during business hours and a pin-code protects the display settings, avoiding any potential content interruptions.

# Specification

Model		BE43T-H	BE50T-H	BE55T-H	BE70T-H
Panel	Size	43	50	55	70
	Type	60Hz E-LED BLU	60Hz E-LED BLU	60Hz E-LED BLU	60Hz E-LED BLU
	Resolution	3,840 x 2,160	3,840 x 2,160	3,840 x 2,160	3,840 x 2,160
	Brightness(Typ.)	250nit	250nit	250nit	250nit
	Contrast Ratio(Typ.)	4,700:1	4,700:1	4,700:1	4,700:1
	Viewing Angle(H/V)	178-178	178-178	178-178	178-178
	Response Time(G-to-G)	8ms	8ms	8ms	8ms
	Display Colors	16.7 M	16.7 M	16.7 M	16.7 M
	Color Gamut	72%	72%	72%	72%
	Operation Hour	16/7	16/7	16/7	16/7
	Haze	2%	2%	2%	2%
	Screen Curvature	N/A, Flat	N/A, Flat	N/A, Flat	N/A, Flat
Connectivity	INPUT	RGB	N/A	N/A	N/A
		VIDEO	HDMI (2)	HDMI (2)	HDMI (2)
		HDCP	N/A	N/A	N/A
		AUDIO	N/A	N/A	N/A
		USB	USB (1)	USB (1)	USB (1)
		RF	1 Terrestrial /1 Cable	1 Terrestrial /1 Cable	1 Terrestrial /1 Cable
	OUTPUT	RGB	N/A	N/A	N/A
		VIDEO	N/A	N/A	N/A
		AUDIO	Optical	Optical	Optical
		Power Out	N/A	N/A	N/A
	External Control	RJ45	RJ45	RJ45	
	External Sensor	N/A	N/A	N/A	
	Wireless	WiFi 5, Bluetooth supported	WiFi 5, Bluetooth supported	WiFi 5, Bluetooth supported	
Design	Bezel Type		3 Bezel-less, Slim look	3 Bezel-less, Slim look	3 Bezel-less, Slim look
	Color	Front	TITAN GRAY	TITAN GRAY	TITAN GRAY
		Stand	TITAN GRAY	TITAN GRAY	TITAN GRAY
	Stand Type		QUAD POD	QUAD POD	QUAD POD
Swivel (Left/Right)		N/A	N/A	N/A	
Power	Type		Internal	Internal	Internal
	Power Supply		AC220-240V 50/60Hz	AC220-240V 50/60Hz	AC220-240V 50/60Hz
	Power Consumption	Max	125	135	150
		Energy Saving Mode (W)	N/A	N/A	N/A
		Stand-by (W)	N/A	N/A	N/A
		Typical	N/A	N/A	N/A
Mechanical	Dimension (mm)	Set without Stand	963.9 x 558.9 x 59.6	1116.8 x 644.2 x 59.9	1230.5 x 707.2 x 59.9
		Set with Stand	963.9 x 628.9 x 200.5	1116.8 x 713.6 x 249.7	1230.5 x 778.3 x 249.7
		Package	1081 x 670 x 143	1264 x 780 x 150	1386 x 843 x 158
	Weight (kg)	Set without Stand	8.1	11.4	13.9
		Set with Stand	8.3	11.6	14.2
		Package	11.8	16	19.5
	Bezel Width (mm)		5.5 (T/S)11.1 (Bottom)	5.5 (T/S)12.1 (Bottom)	5.5 (T/S)11.1 (Bottom)
	VESA	Screw Size	M8	M8	M8
		Screw depth	20-22	20-22	20-22
VESA Spec		200*200	200*200	200*200	

Model		BE43T-H	BE50T-H	BE55T-H	BE70T-H	
Certification	Safety	BIS(India) : IEC60065 / IS616	BIS(India) : IEC60065 / IS616	BIS(India) : IEC60065 / IS616	BIS(India) : IEC60065 / IS616	
	EMC	N/A	N/A	N/A	N/A	
Accessory	Included	Remote Control, Batteries, User Manual, Power Cable	Remote Control, Batteries, User Manual, Power Cable	Remote Control, Batteries, User Manual, Power Cable	Remote Control, Batteries, User Manual, Power Cable	
	Optional	Stand	Yes	Yes	Yes	Yes
		Mount	N/A	N/A	N/A	N/A
		Specialty	N/A	N/A	N/A	N/A
	Media Player	USB M/player	USB M/player	USB M/player	USB M/player	
Video	Picture Engine	Crystal Processor4K	Crystal Processor4K	Crystal Processor4K	Crystal Processor4K	
	HDR10+	Yes	Yes	Yes	Yes	
Audio	Dolby Digital Plus	Yes	Yes	Yes	Yes	
	Sound Output (RMS)	20W	20W	20W	20W	
	Speaker Type	2CH (10W+10W)	2CH (10W+10W)	2CH (10W+10W)	2CH (10W+10W)	
	Woofers	N/A	N/A	N/A	N/A	
	Bluetooth Audio	Yes	Yes	Yes	Yes	
Broadcasting System	Digital Broadcasting	DVB-T2	DVB-T2	DVB-T2	DVB-T2	
	DTV Sound System	Dolby	Dolby	Dolby	Dolby	
	Analog Tuner	Yes	Yes	Yes	Yes	
	CI (Common Interface)	N/A	N/A	N/A	N/A	
	Smart TV Type	Smart	Smart	Smart	Smart	
Smart Service	Operating System	Tizen™	Tizen™	Tizen™	Tizen™	
	Supported	Samsung businessTV, Web browser, Youtube	Samsung businessTV, Web browser, Youtube	Samsung businessTV, Web browser, Youtube	Samsung businessTV, Web browser, Youtube	
	Adaptive Sound	Adaptive Sound	Adaptive Sound	Adaptive Sound	Adaptive Sound	
Additional Feature	Instant On	Yes	Yes	Yes	Yes	
	Game Mode	Yes (Game Enhancer)	Yes (Game Enhancer)	Yes (Game Enhancer)	Yes (Game Enhancer)	
	Mobile to TV - Mirroring, DLNA	Yes	Yes	Yes	Yes	
	Remote Access	Yes	Yes	Yes	Yes	
	Easy Setup	No	No	No	No	
	Wired TV On - Samsung WOL	Yes	Yes	Yes	Yes	
	WiFi Direct	Yes	Yes	Yes	Yes	
	TV Sound to Mobile	Yes	Yes	Yes	Yes	
	Sound Mirroring	Yes	Yes	Yes	Yes	
	BizTV App (Android, iOS)	Yes	Yes	Yes	Yes	
	On/Off timer	Yes	Yes	Yes	Yes	
	Autorun Signage(App auto launch)	Yes	Yes	Yes	Yes	
	App pre-installation	Yes	Yes	Yes	Yes	
	OTN On/Off	Yes	Yes	Yes	Yes	
	Security lock	Yes	Yes	Yes	Yes	
	Panel button lock	Yes	Yes	Yes	Yes	
Usb port lock	Yes	Yes	Yes	Yes		
Mobile Connection menu lock	Yes	Yes	Yes	Yes		

## **About Samsung Electronics Co., Ltd.**

Samsung Electronics Co., Ltd. inspires the world and shapes the future with transformative ideas and technologies. The company is redefining the worlds of TVs, smartphones, wearable devices, tablets, cameras, digital appliances, medical equipment, network systems, and semiconductor and LED solutions. For the latest news, please visit the Samsung Newsroom at [news.samsung.com](https://news.samsung.com).

## **Business TV**

For more information about Samsung Business TV, visit [www.samsung.com/business](https://www.samsung.com/business) or [www.samsung.com/displaysolutions](https://www.samsung.com/displaysolutions)

Copyright © 2020 Samsung Electronics Co. Ltd. All rights reserved. Samsung is a registered trademark of Samsung Electronics Co. Ltd. Specifications and designs are subject to change without notice. Non-metric weights and measurements are approximate. All data were deemed correct at time of creation. Samsung is not liable for errors or omissions. All brand, product, service names and logos are trademarks and/or registered trademarks of their respective owners and are hereby recognized and acknowledged.

Samsung Electronics Co., Ltd.  
416, Maetan 3-dong, Yeongtong-gu, Suwon-si, Gyeonggi-do 443-772, Korea

2020-03

**SAMSUNG**