



Angle-Adjustable Credit Card Terminal Stand



Angle-Adjustable Credit Card Terminal Stand

This credit card terminal combines top tier security with a modern, stylish aesthetic, making it perfect for retail counters, information kiosks, and more. The stand itself provides several adjustment points including a 180-degree rotating pole, a size-adjustable credit card terminal holder, and front to back hinge tilting. The hollow metal pole provides easy infrastructure for hidden cable routing and mounts easily to your tabletop with included hardware.

Features:

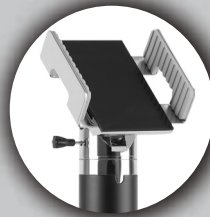
- Size-adjustable credit card terminal holder with tension knob lock
- Padded rubber grips for scratch and slip protection
- Front to back hinge for angle adjustment; bolt for optional fixed vertical orientation
- Pole rotates 180 degrees for easy switches between customer and register sides
- Hollow metal pole accommodates easy charge cable routing
- Easy mounting with included hardware
- Compatible with iPad Pro 9.7 and iPad Air 2

Specifications:

- Holder adjustment range: 2.72" – 4.3"
- Dimensions: 9.84" x 2.91" x 2.91"
- Base dimensions: 2.91" x 2.91"
- Weight: 1.5 lbs.

Package includes:

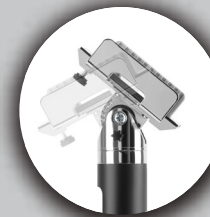
- (1) Credit card stand
- (1) Set of mounting hardware



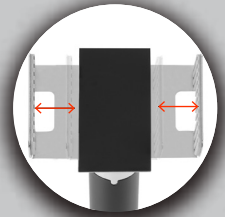
Rubber Grips



Hollow Pole
for Cable Routing



Flexible Tilt
Angle Adjustment



Size Adjustable
Credit Card Terminal

	Quantity	Width	Height	Depth	Weight	UPC Barcode
Packaging	-	-	-	-	-	656777016777
Master	-	-	-	-	-	10656777016774