

# Smart LED Pocket Cinema Projector with JBL Speakers

ViewSonic® See the difference™ 

M1 mini Plus



- Smart stand that allows for ceiling projection
- Swappable top plates for your everyday mood
- JBL speakers for sensational audio
- Built-in battery for fun on the go
- Smart Wi-Fi & Bluetooth connectivity
- Instant power on to enjoy your favorite shows right away

The ViewSonic M1 mini Plus is a smart pocket cinema which delivers convenient audiovisual entertainment anywhere. With the light weight, ultra-mini size and swappable colored top plate, it serves as a personal pocket cinema for your everyday life. The built-in battery, JBL speaker, and the ability to be charged by a power bank, allows for easy outdoor or on the go use. The adjustable stand offers flexible projection angles that can satisfy many viewing needs - even ceiling projection. More fun can be accessed with Wi-Fi and Bluetooth connectivity - wireless casting from smart devices, built-in content streaming, and audio amplification.



•  
•  
•





**Smart Stand**

Offering you flexible projection angles - even ceiling projection



### Swappable Colored Plates

Mint, yellow, and grey to suit your everyday mood





## **JBL Speakers for a Room-filling Sound**

Embedded with JBL speakers, you may hold the coolest movie night or music party whenever and wherever you want with sensational audio boosted by JBL right out of the box.

---

SOUND BY





## Cinematic Experiences On-The-Go

Watch two episodes of your favorite TV series back-to-back anywhere without running out of battery.  
Still not enough? Easily extend your playtime by sharing the power bank you use to charge your smartphone.



# 1.5 hrs

In Eco mode



## **True-to-life Colors, Fill You with Wonder**

True-to-life colors offered by ViewSonic's proprietary Cinema SuperColor+™ Technology with 125% Rec.709 give you the vivid touch and feel for rich emotional pleasure.







## Streaming Heaven

Say goodbye to cable clutter and external devices. The built-in app center caters to all your entertainment needs. Enjoy your favorite apps from the projector to the big screen or download them - all via Wi-Fi.

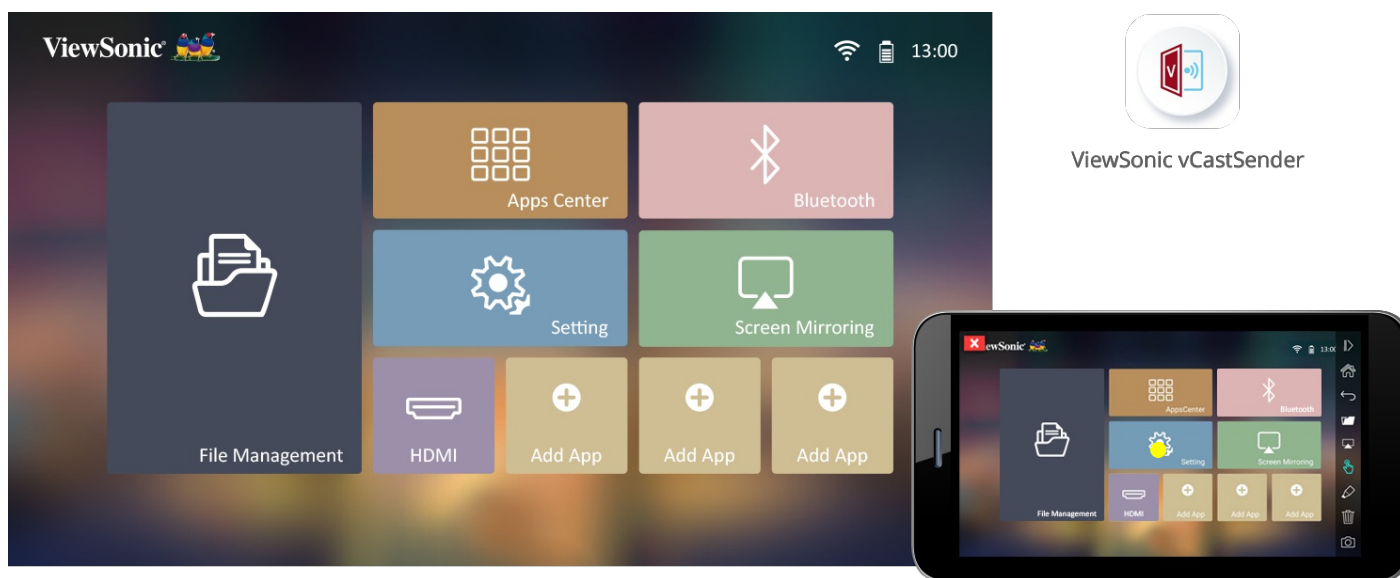


*\*The Apps herein are for demo purpose only and are not preinstalled in the Product. The Apps and their trademarks or logos are the properties of their respective owners, unaffiliated with ViewSonic, and not sponsors or endorsers of*

the Product.

## Intuitive Touch Control with your phone

Now you can turn your mobile device into an alternative powerful remote control – intuitive touch control, easy typing, and simple annotation on the big screen. Simply download the ViewSonic vCastSender app on your phone, make sure your phone and the projector are connected to the same Wi-Fi network, and pair them up in the app to get started.



[Learn more](#)

- 1.
- 2.





## Bluetooth for Flexible Audio Needs

Turn the M1 mini Plus into a Bluetooth speaker to play your favorite music in high quality and amplify the pleasure.

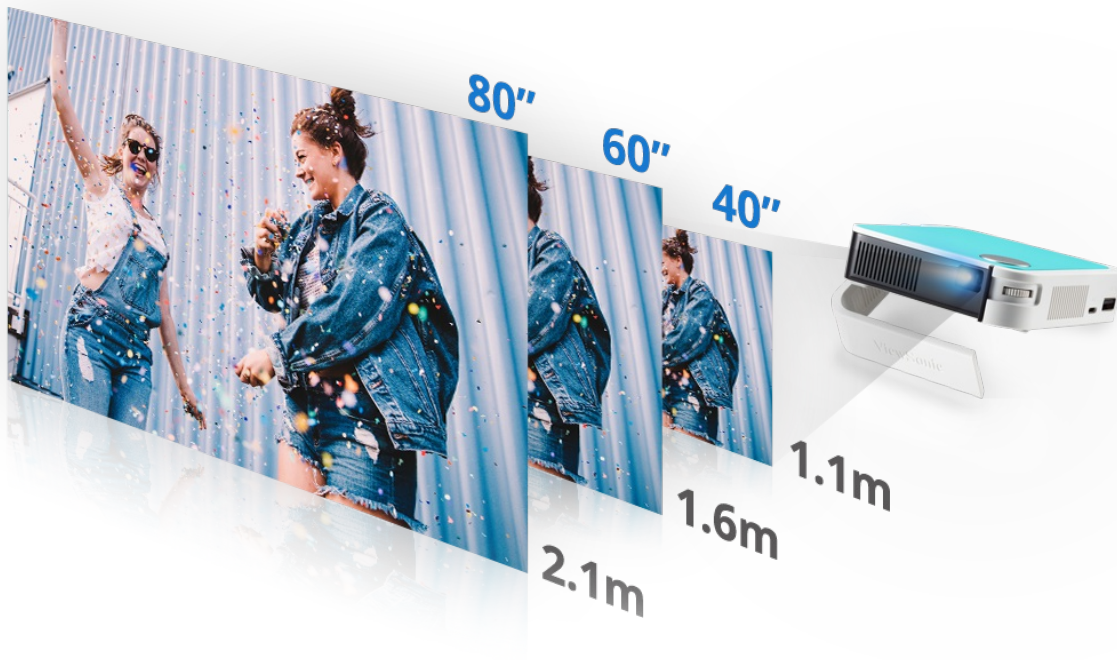
Or the other way around, output the audio of a thrilling game from the projector to your own Bluetooth headphones, immersing yourself in your own big screen fun.





## Instant Power On to Enjoy Your Favorite Shows Right Away

Tired of staring at a blank screen waiting for the display to get started? Set up your own cinema in an instant with the M1 mini Plus and enjoy your favorite shows right away.



## Go Big Even in Small Spaces

Scale up the excitement with a screen size easily made larger than a TV - even in your own room, dorm or any other small spaces. With a 1.2 throw ratio, the M1 mini Plus is capable of projecting a 40" screen size from only 1.1 m away.

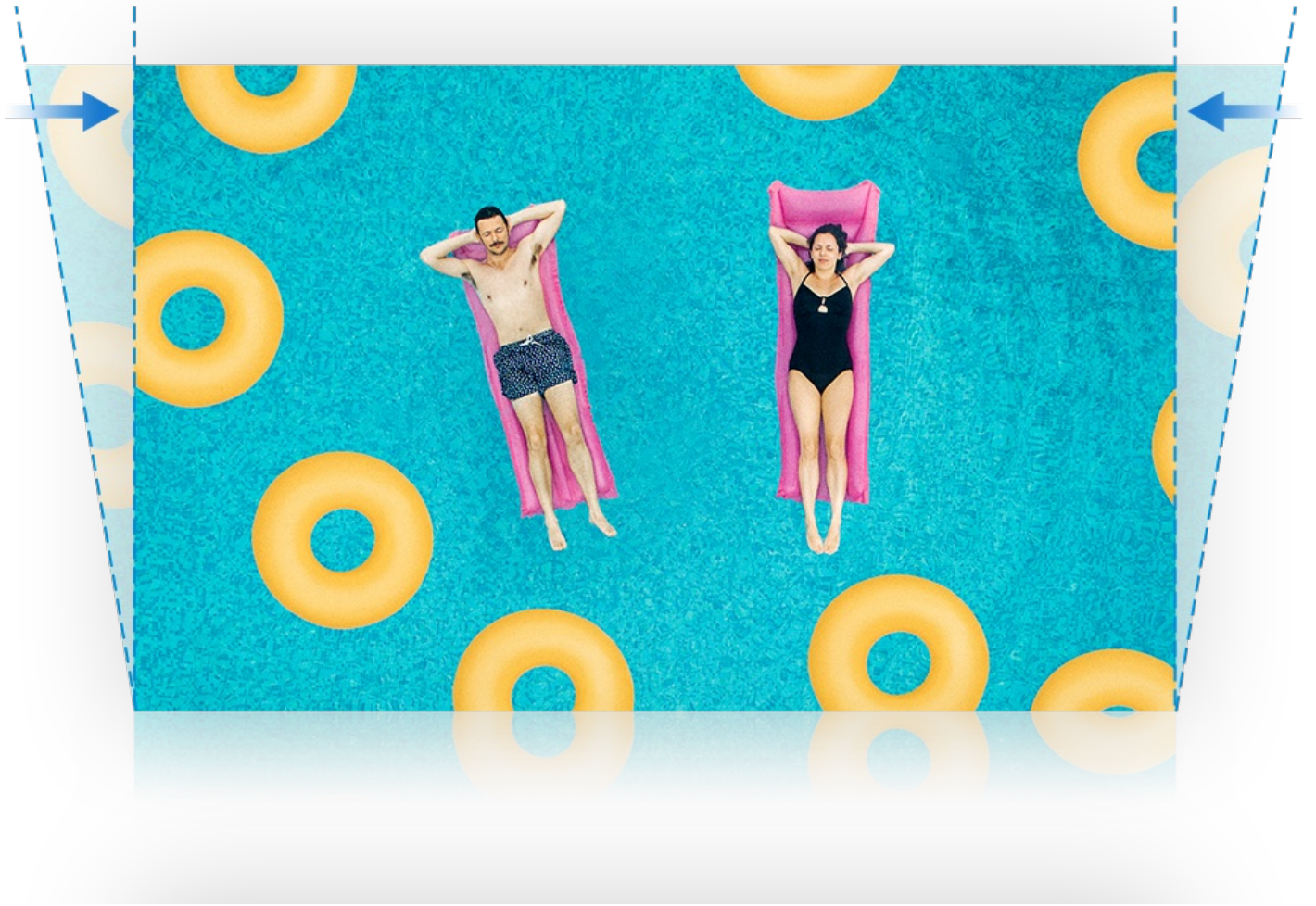


## Plug & Play

Never find yourself lost in a jungle of complicated I/O ports. Simply plug in a USB flash drive or HDMI cable connected to your device, or save your favorite content directly onto the projector's 4GB local storage, and start enjoying movies, photos and music with ease.

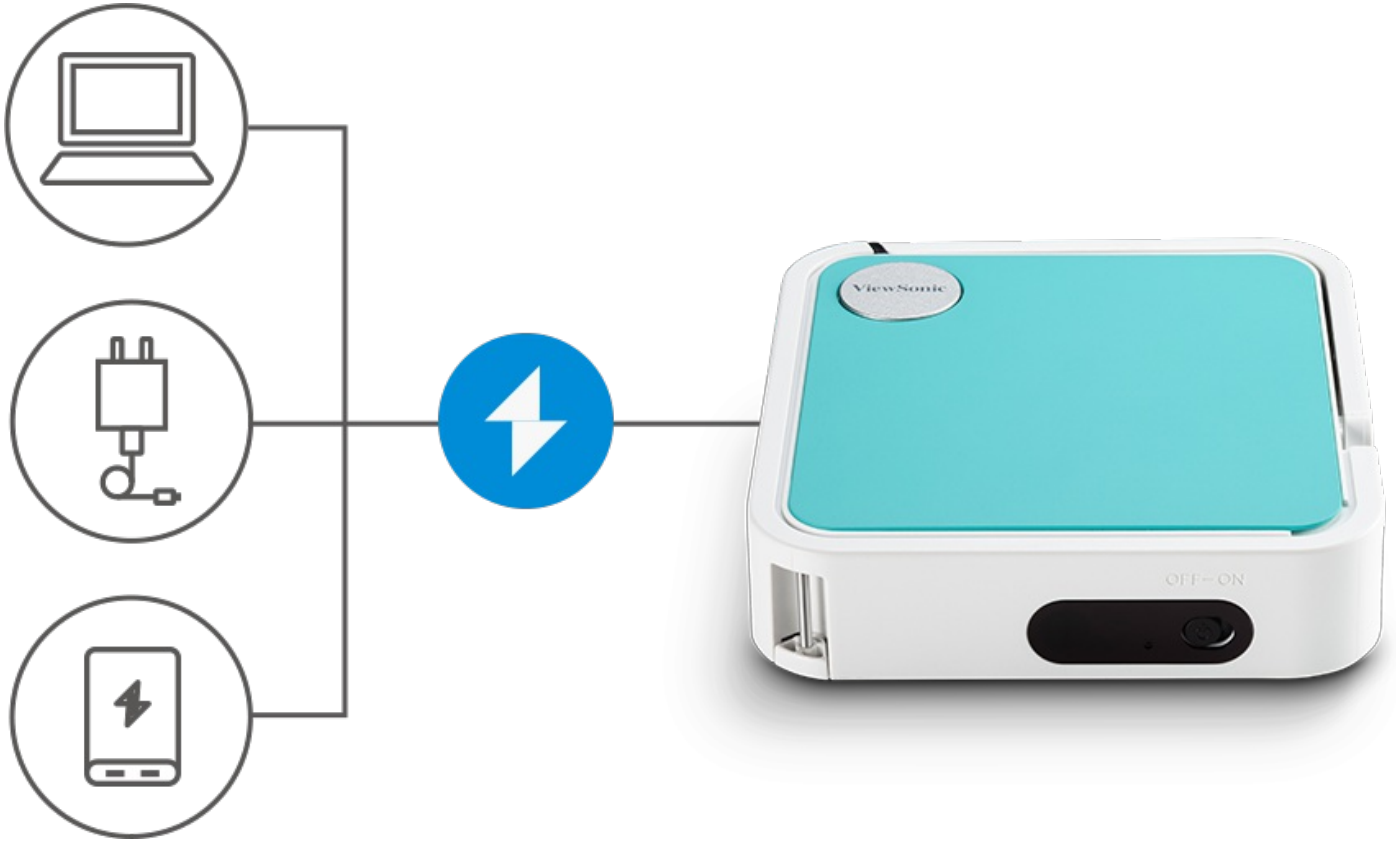






## **Perfectly Proportioned Images Every time**

No matter how you tilt the projector, up or down, the Auto V Keystone correction ensures you always get the projection in an upright shape, with no need for manual adjustments.

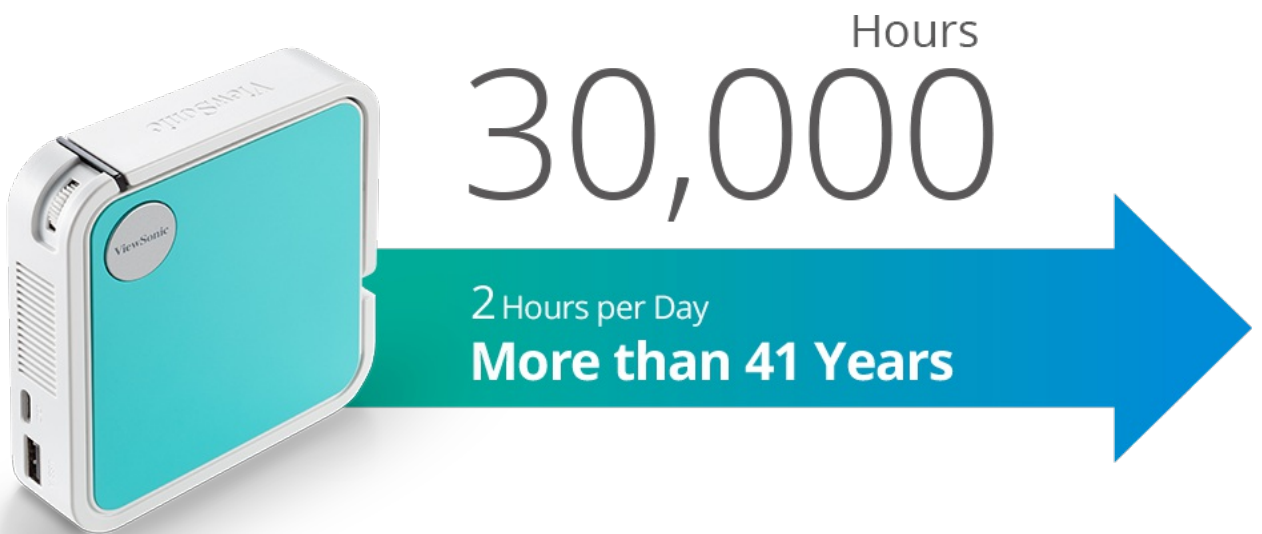


## USB Type-C for Quicker and Easier Recharging

Resume entertainment within a 50%\* shorter period of wait by using the USB type-C adaptor provided. You can also easily recharge the M1 mini Plus by connecting to many of the devices you already have, like a power bank\* or PC.

*\*Compared to typical 5V/1A adaptors on the market.*

*\*To power on the projector, the power bank should be at least 18W (9V/2A) and support Quick Charge (QC) protocol output.*



## **Your Supportive Friend for Endless Fun**

Advanced LED technology (mercury-free) offers a greener, filter-free and virtually maintenance-free projector solution. The LED light source has a life of up to 30,000 hours, which equates to 2 hours usage per day for over 41 years.

*\*30,000 hours in Eco Mode*

## **Say Goodbye to Irritating Noise**

With a lower than whisper fan noise of 25dB, you can be fully immersed in the viewing experience.

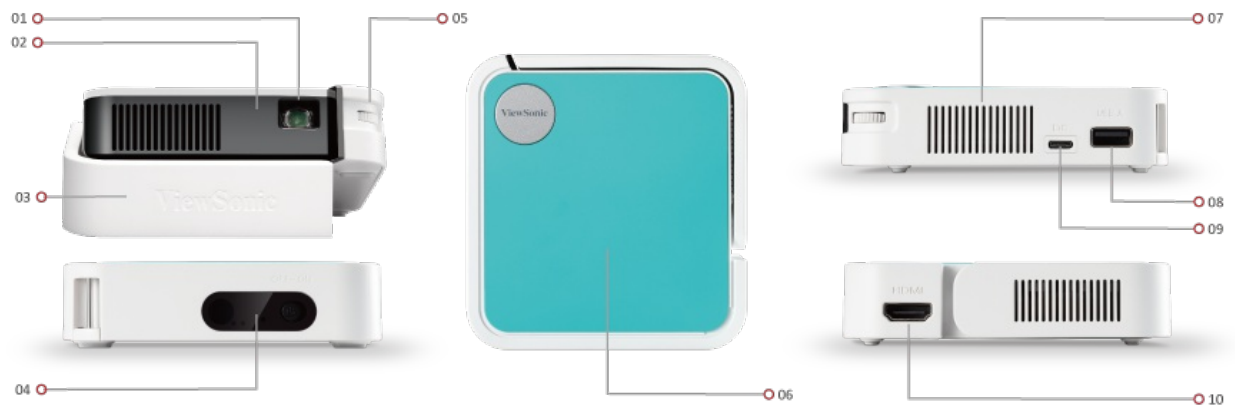


A diagram illustrating the concept of reflective light. A light beam enters from the top left, hitting a screen. The screen displays a colorful scene with various spheres. Several arrows originate from the screen, pointing towards the viewer, representing the light reflecting off the screen. The text 'Reflective light' is positioned to the left of these arrows.

Reflective light

## Eye Care

Utilizing reflective light, which bounces off the wall or projector screen before hitting your eyes, the projector makes the viewing experience virtually blue light free, less invasive to your sight and reduces eyestrain over prolonged viewing periods.



1. Lens
2. Front IR
3. Smart Stand
4. Power Switch
5. Focus Ring
6. Swappable Top Plates
7. Speaker
8. USB Type A
9. USB Type C (DC in)
10. HDMI

## Technical Specifications

<b>Specification</b>	<b>Projection System</b>	0.2" WVGA	
	<b>Native Resolution</b>	854x480	
	<b>Brightness</b>	120 (LED Lumens)	
	<b>Contrast Ratio</b>	500:1	
	<b>Display Color</b>	1.07 Billion Colors	
	<b>Light Source Type</b>	LED	
	<b>Light Source Life (hours) with Normal Mode</b>	up to 30000	
	<b>Lamp Watt</b>	RGB LED	
	<b>Lens</b>	F=1.7, f=7.5mm	
	<b>Projection Offset</b>	0+/-5%	
	<b>Throw Ratio</b>	1.2	
	<b>Optical Zoom</b>	Fixed	
	<b>Image Size</b>	24"-100"	
	<b>Throw Distance</b>	0.64m-2.66m, (39" @1m)	
	<b>Keystone</b>	+/- 40° (V)	
	<b>Audible Noise (Normal)</b>	26dB	
	<b>Audible Noise (Eco)</b>	25dB	
	<b>Local Storage</b>	Total 8GB, (4GB available storage)	
	<b>Input Lag</b>	35ms	
	<b>Resolution Support</b>	VGA(640 x 480) to FullHD(1920 x 1080)	
	<b>HDTV Compatibility</b>	480i, 480p, 576i, 576p, 720p, 1080i, 1080p	
	<b>Horizontal Frequency</b>	15h-102kHz	
	<b>Vertical Scan Rate</b>	23-120Hz	
	<b>Input</b>	<b>HDMI</b>	1
		<b>Audio-in (Bluetooth)</b>	1 (BT4.2)
		<b>USB Type A</b>	1, (USB2.0 Reader)
		<b>Wifi Input</b>	1 (5Gn)
<b>Output</b>	<b>Audio-out (Bluetooth)</b>	1 (BT4.2)	
	<b>Speaker</b>	2W Cube	
	<b>USB Type A (Power)</b>	1, (USB2.0 - 5V/1A, , share with USB A Input)	
<b>Others</b>	<b>Power Supply Voltage</b>	Power adaptor: , USB Type C, Input: 5V/4A, , Battery:, 5000mAh 3.7V, (1.4hrs@Normal, 1.5hrs@Eco)	
	<b>Power Consumption</b>	Normal: 20W , Standby: <0.5W	
	<b>Operating Temperature</b>	0~40°C	
	<b>Net Weight</b>	0.28Kg	
	<b>Dimensions (WxDxH) with Adjustment Foot</b>	110x104x27mm	
	<b>OSD Language</b>	English, French, Spanish, Thai, Korean, German, Italian, Russian, Swedish, Dutch, Polish, Czech, T-Chinese, S-Chinese, Japanese, Turkish, Portuguese, Finnish, Indonesian, India, Arabic, Vietnamese, Greek, Total 23 languages	
<b>Standard Accessory</b>	<b>Remote Control</b>	1	
	<b>QSG</b>	1	
	<b>Swappable plate</b>	3	



