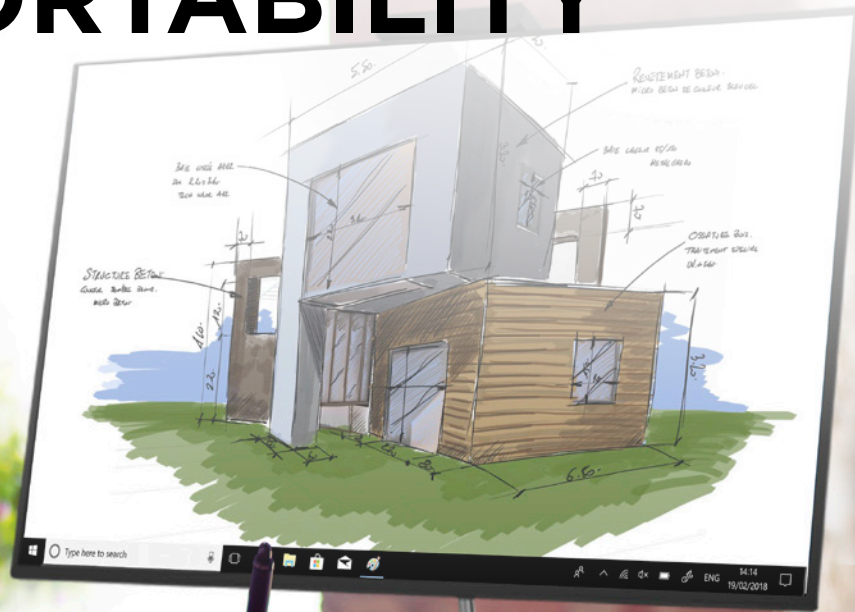


POWERFUL PERFORMANCE MEETS PRACTICAL PORTABILITY

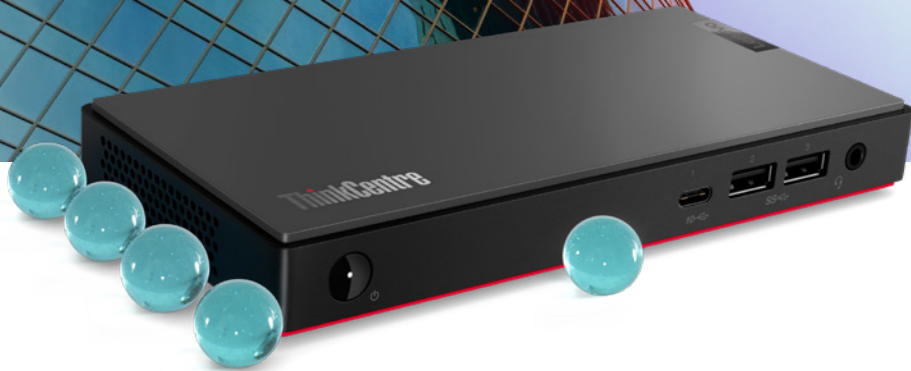


Ultra-small, powerful, and versatile, the ThinkCentre M90n Nano takes the desktop standard to a whole new level of convenience. Powered by the latest-generation Intel® processors and backed by SSD storage, the Nano makes everyday computing seem effortless. The 0.35L Nano is 65% smaller than a ThinkCentre Tiny and can easily fit in any office environment. Compatible with Tiny-in-One (TIO) and USB Type-C docks and monitors, the Nano can give your business productivity a welcome boost.

ThinkCentre M90n Nano



Lenovo



ThinkCentre[®] M90n Nano

ITDM Benefits



Unmatched Performance: The ThinkCentre Nano can be specified to run up to Intel[®] Core[™] i7 processors and 16GB DDR4 memory for users needing a multitasking boost.



Compact Design: The Nano's 0.35L compact form factor fits wherever it's most convenient in your business environment. Compatible with the TIO via Cube, you can easily place the Nano behind a monitor to free up valuable desk space.



Advanced Connectivity: With fully functional USB Type-C and USB 3.1 Gen2 ports on the front and back, the Nano supports numerous add-ons, such as multiple displays, docks, and other hardware options, to help improve your productivity.



Impressive Adaptability: Using compatible accessories, the Nano can be mounted on a wall, under a desk, behind a monitor—wherever you like it. It can also be powered through a single cable via a USB Type-C monitor for a clutter-free workspace.

Durability

ThinkCentre Nano is MIL-810G SPEC tested—built to withstand 10 different extreme conditions including shocks, drops, dust, and humidity.

Security

The HW TPM 2.0 chip encrypts data to keep sensitive business data safe. Using the Kensington[™] lock slot, you can physically secure the device to an immovable object, to protect it from theft.

Ease of Use

Nano supports Modern Standby, a feature that allows you to receive emails, VoIP calls, and instant messages while on standby mode, much like a smartphone. It also resumes to full function instantly, in less than a second.

Optional Accessories



THINKVISION T25d-10

Expand the capabilities of the Nano by connecting it to the T25d display. Enjoy smooth, flicker-free visuals from any angle on its 25-inch NearEdgeless In-Plane Switching screen. Versatile HDMI, DP, and VGA ports offer easy connectivity to your favorite work essentials.



THINKCENTRE NANO DIN RAIL MOUNT

This compact and ruggedly designed mount securely affixes the Nano to a rack housing cabinet or frame with other DIN rail equipment for a clutter-free workspace.

THINKCENTRE NANO VESA MOUNT

The VESA-standard mount attaches to any VESA-compatible equipment. This versatile device can be used separately or combined with other options for secure mounting functionality.



THINKCENTRE NANO MONITOR CLAMP

Use this clamp to expand Nano's deployment flexibility further and install a Nano unit to a monitor to save space.

THINKCENTRE NANO TIO MODULE BRACKET

The Nano module bracket offers utmost mounting flexibility by allowing you to attach the Nano at the back of the display to form your own modular PC. This secure mounting also enables easy upgrades of the display or PC as your business needs change.



ThinkCentre M90n Nano (FAN)

PERFORMANCE

Processor

8th Generation Intel® Core™ i3/i5 Processors

8th Generation Intel® Core™ vPro™ i5/i7 Processors

Operating System

Windows 10 Pro (64 bit)

Windows 10 Home (64 bit)

Windows 10 IoT LTSC (Snp)

Memory

Up to 16GB DDR4

Storage

Up to 2 x 512GB PCIe SSD

PSU

65W 88% adapter

CONNECTIVITY

Front Input/Output Ports

2 x USB 3.1 Gen2

1 x USB Type-C (USB 3.1 Gen2)

1 x audio combo

Rear Input/Output Ports

2 x USB 3.1 Gen2

1 x USB Type-C (USB 3.1 Gen2) (power-in, display)

1 x DisplayPort 1.2

1 x RJ45 LAN

1 x DC-in

Expansion Slot

2 x M.2 SSD

1 x M.2 WiFi/BT

DESIGN

Dimensions

179 x 88 x 22mm

7.04 x 3.46 x 0.86 inches

Weight

505g/1.1lb.

Mechanical Peripherals

TIO Cube (for TIO compatibility)

VESA wall mount

Monitor clamp

SECURITY

HW TPM 2.0

Chassis intrusion switch

Smart USB protection

Kensington™ lock slot

RELIABILITY

MIL-SPEC 810H

Yes

MANAGEABILITY

Smart Power on

Yes

Multi-Monitor

Yes, 2 independent displays

Modern Standby

Yes

Certifications

Energy Star®

EPEAT™

TÜV Low Noise

RoHS

Ubuntu® Certified*

Redhat® Certified*

RECOMMENDED SERVICES

Lenovo offers a comprehensive portfolio of services to support and protect your ThinkCentre investments, so you can focus on the business at hand rather than worrying about IT.

Premier Support

Provides direct access to skilled and experienced Lenovo technicians for comprehensive hardware and software support. Gives you a consistent point of contact within Lenovo to ensure that your case resolution is professionally managed from start to finish.

Accidental Damage Protection (ADP)

Prevents the hassles of unexpected repair costs.

Provides coverage for non-warranted damage incurred under normal operating conditions, such as minor spills, drops, or damage.

Warranty Extension (1-year base, up to 3 years total)

This fixed-term, fixed-cost service helps you accurately budget for PC expenses, protect your valuable investment, and lower your cost of ownership over time.



*Limited Configuration



Depending on many factors such as the processing capability of peripheral devices, file attributes, and other factors related to system configuration and operating environments, the actual transfer rate using the various USB connectors on this device will vary and is typically slower than the data rates as defined by the respective USB specifications: - 5 Gbit/s for USB 3.1 Gen1; 10 Gbit/s for USB 3.1 Gen2 & 20 Gbit/s for USB 3.2.

© 2019 Lenovo. All rights reserved. These products are available while supplies last. Prices shown are subject to change without notice. For any questions concerning price, please contact your Lenovo Account Executive. Lenovo is not responsible for photographic or typographic errors. Warranty: For a copy of applicable warranties, write to: Warranty Information, 500 Park Offices Drive, RTP, NC 27709, Attn: Dept. ZPYA/B600. Lenovo makes no representation or warranty regarding third-party products or services. Trademarks: Lenovo, the Lenovo logo, Rescue and Recovery, ThinkPad, ThinkCentre, ThinkStation, ThinkVantage, and ThinkVision are trademarks or registered trademarks of Lenovo. Microsoft, Windows, and Vista are registered trademarks of Microsoft Corporation. Intel, the Intel logo, Intel Inside, Intel Core, and Core Inside are trademarks of Intel Corporation in the U.S. and/or other countries. Other company, product, and service names may be trademarks or service marks of others.