



Feel it. BASS+

Philips BASS+ headphones pack huge, punchy bass into a sleek, sturdy package. Good looking, great sounding and superb value Bluetooth over-ear wireless headphones for those who need more bass in their beats without any extra bulk.

Bold bass

- Big, bold bass that you can feel
- 40mm Neodymium speakers
- Great sound isolation

True comfort

- Great fit for everyone
- Control calls, music and volume with ear-shell switches
- Soft ear cushions for long-wearing comfort
- Folds into a compact form for easy storing and carrying
- Convenient hands-free calling

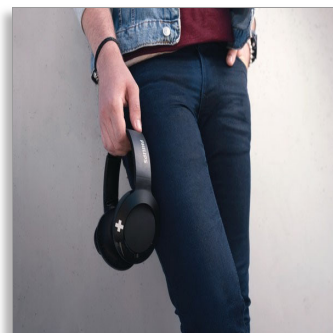
Wireless

- Bluetooth wireless technology
- Rechargeable battery offers up to 12 hours of playtime
- USB charging cable

Philips BASS+
Bluetooth Headset

40mm drivers/closed-back

Over-ear
Soft ear cushions
Compact folding



SHB3175BK



PHILIPS

Highlights

40 mm speakers



40mm Neodymium speakers that produce big bold bass

Adjustable earshells/ handband



A swivel earshells design and adjustable headband makes it a great fit for everyone.

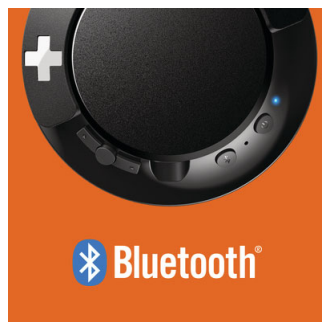
Big, bold bass



Powerful bass to upgrade your listening enjoyment. Don't get fooled by its sleek design as the specially designed bass vent and specially tuned drivers produces ultra-low end frequencies that gives the headphones the unique Bass+ sound signature. Separate

acoustic volume is used to make sure high consistency bass performance in every production.

Bluetooth



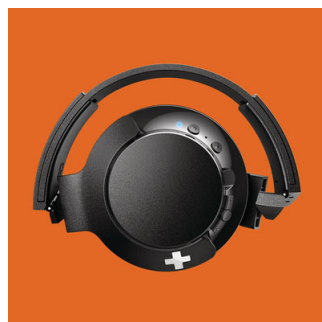
Easily pair your headphones with any Bluetooth device for wireless music.

Button controls



Button controls on the right ear shell enable you to control music and calls with a press.

Compact fold



The unique compact fold design gives you the best experience on the go. The headphones

can be either flat fold or compact fold for easy portability and easy storage.

Sound isolation



Closed type acoustics blocking out ambient noise and providing better sound.

USB charging cable



The included USB charging cable makes it easy to keep your headphones powered up when you need them.

12-hour playtime



With 12 hours of playtime, you'll have enough power to keep your music going all day.

Specifications

Design

- Color: Black

Accessories

- Quick start guide
- USB cable

Connectivity

- Bluetooth profiles: A2DP, AVRCP, HFP, HSP
- Maximum range: Up to 10 m
- Bluetooth version: 4.1

Convenience

- Volume control
- Call Management: Answer/End Call, Microphone mute, Reject Call, Switch between 2 calls, Switch between call and music

Power

- Music play time: 12* hr
- Standby time: 166* hrs
- Talk time: 12* hrs
- Battery type: Li-Polymer
- Rechargeable

Sound

- Frequency range: 8 - 21 500 Hz
- Impedance: 32 ohm
- Magnet type: Neodymium
- Maximum power input: 40 mW
- Speaker diameter: 40 mm
- Sensitivity: 104 dB
- Acoustic system: Closed

Packaging dimensions

- EAN: 69 51613 99168 8
- Packaging dimensions (W x H x D): 19.5 x 22.5 x 5.7 cm
- Packaging dimensions (W x H x D): 7.7 x 8.9 x 2.2 inch
- Gross weight: 0.335 kg
- Gross weight: 0.739 lb
- Nett weight: 0.224 kg
- Nett weight: 0.494 lb
- Number of products included: 1
- Tare weight: 0.111 kg
- Tare weight: 0.245 lb
- Packaging type: Carton
- Type of shelf placement: Both

Outer Carton

- Gross weight: 2.681 lb
- Gross weight: 1.216 kg
- GTIN: 1 69 51613 99168 5
- Outer carton (L x W x H): 21.2 x 19.1 x 24 cm
- Outer carton (L x W x H): 8.3 x 7.5 x 9.4 inch
- Nett weight: 1.481 lb
- Nett weight: 0.672 kg
- Number of consumer packagings: 3
- Tare weight: 1.199 lb
- Tare weight: 0.544 kg

Product dimensions

- Product dimensions (W x H x D): 19 x 18.5 x 4.6 cm
- Product dimensions (W x H x D): 7.5 x 7.3 x 1.8 inch
- Weight: 0.419 lb
- Weight: 0.19 kg



Issue date 2020-07-08

Version: 7.6.6

12 NC: 8670 001 45654
EAN: 69 51613 99168 8

© 2020 Koninklijke Philips N.V.
All Rights reserved.

Specifications are subject to change without notice.
Trademarks are the property of Koninklijke Philips N.V.
or their respective owners.

www.philips.com

* Actual results may vary