



ADD-MSPC10

Heavy Duty Omni-Directional Metal Stand For PAD-MSPC10 Magnetic Cases

Features:

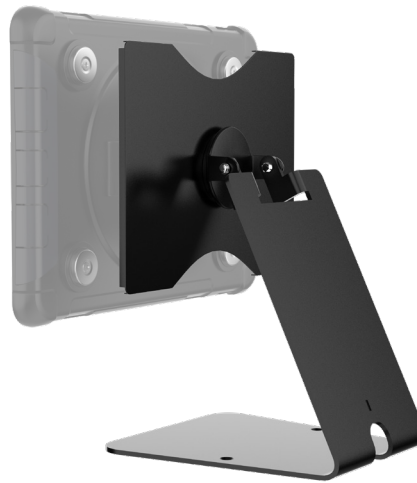
- Sturdy metal construction with heavy base
- 360-degree rotating plate for use in landscape or portrait orientation
- Sits easily on any surface
- Can be permanently mounted to countertop or desk via pre-drilled holes
- Compatible with CTA Digital's MSPC10 series tablet enclosures

Specifications:

- Overall Dimensions: 8.125" x 5.5" x 9.5"
- Weight: 3.4lbs

Package includes:

(1) Tablet Stand

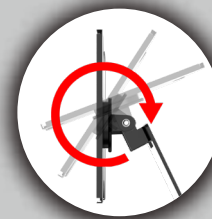


***Tablet and PAD-MSPC10 cases are not included and are shown for example purposes.*

Durability finally stops getting in the way of convenience with the Display Stand for CTA Digital Kickstand Magnetic Cases. The perfect partner to your protective case, this display stand works hand-in-hand to add versatility to your office, point of sale, classroom or even your home. This ingenious stand lets the rotary on the back of the case work perfectly allowing 360-degree rotations. It supports your tablet on any desk or table, allowing you to use a Bluetooth keyboard like a laptop or to simply enjoy some streaming videos.



Sturdy Base Mount
Drilled & Non-Drilled Options



Adjustable Tilt
Mounting



Magnetic Base Connection
to MSPC10 Case

| | Quantity | Width | Height | Depth | Weight | UPC Barcode |
|-----------|----------|-------|--------|-------|--------|----------------|
| Packaging | - | - | - | - | - | 656777017842 |
| Master | - | - | - | - | - | 10656777017849 |