

IRG5500 LTE Wi-Fi Routers

For Corporate or Industrial IoT and M2M applications



- LTE Router for Primary or Failover Connectivity
- Network connectivity via LTE, Wi-Fi, Ethernet, USB 3.2, and Serial
- 128 Wi-Fi clients can work simultaneously
- LTE-Advanced (LTE-A and LTE-A Pro) for 10x faster downlink speeds and 3x faster uplink speeds
- **Cloud Hosting** -- Deploy and manage your network from the cloud
- 2-port or 4-port 10/100/1000 Ethernet
- RS232, RS485, Alarm Relay, and multiple I/O to connect equipment
- Advanced feature set with NO Annual Fees

Perle IRG5500 LTE Wi-Fi Routers and Gateways have the most comprehensive set of features, functionality, and performance to provide **primary or failover back-up connectivity** to remote infrastructure and assets in Corporate and Industrial environments. These ultra-low-power, rugged, high-performance Cellular Routers, with dual-SIM slots, also have **models with WLAN capabilities** making them a single network point of contact for fast deployments. And, there is no need for training because an IRG5500 Router comes with an intuitive web GUI. For advanced admin scrips, CLI commands are also available.

IRG5521 LTE Router



IRG5541 LTE Router



Perle IRG5500 Routers provide **fast, secure, and reliable managed LTE network connectivity** where wired options are impossible to deploy or require a backup. This is crucial for enabling a wide range of applications while ensuring the highest degree of security to protect the integrity of critical services. Reduce the cost of downtime and service calls, and bringing distributed sites online faster. With support for **Data, SMS, Voice, and Video**, an IRG5500 and can be integrated into any enterprise cloud, building, industrial, or mobile location network infrastructure.

Perle IRG7000 5G Routers provide **fast, secure, and reliable managed 5G network connectivity** where wired options are impossible to deploy or require a backup. This is crucial for enabling a wide range of applications while ensuring the highest degree of security to protect the integrity of critical services. Reduce the cost of downtime and service calls, and bringing distributed sites online faster. With support for **Data, SMS, Voice, and Video**, an IRG7000 and can be integrated into any enterprise cloud, building, industrial, or mobile location network infrastructure.

- Building and process automation controllers, Internet of Things (IoT)
- Smart grid assets (meters, switches, controllers), Telco infrastructure controllers
- SCADA, Distribution management systems, Remote data loggers, flow meters, sensing equipment
- Digital signage, ATMs, POS, Kiosks, Temporary "pop-up" stores
- Video surveillance controllers, IP cameras, Mobile hotspots
- Fleet management, GPS/GNSS Location tracking, Taxis, Public Service Vehicles, vehicle area networking (VAN)
- Public Service Vehicles, First responders, Command Centers
- Transit systems, Buses, Metro Subways, Railways

Dual-band Wi-Fi with Integrated WLAN Access Point

Integrated Wi-Fi (**up to 866Mbps**) for LAN connectivity allows up to 128 simultaneous clients to work concurrently. Integrates 802.11 a/b/g/n/ac Access Point for mission-critical applications. The 2X2 MIMO Access Point creates a self-healing, self-optimizing wireless network.

Cellular Band Operation Certified Worldwide over 4G LTE, DC-HSPA+, HSPA+, HSPA, and UMTS (WCDMA)

Perle IRG5500 Routers and Gateways have three cellular options to ensure **support for your carrier's primary bands** in deployment areas:

1. **IRG5500+**: LTE-A PRO CAT12. 600Mbps downlink and 150Mbps uplink speeds. Support for 24x LTE Bands and 9x UMTS/WCDMA Bands
2. **IRG5500**: LTE-A CAT6. 300Mbps downlink and 50Mbps uplink speeds. Support for 15x LTE Bands and 6x UMTS/WCDMA Bands
3. **IRG5500+ FN**: FirstNet Ready™ support for Band 14 (B14). LTE-A PRO CAT12. 600Mbps downlink and 150Mbps uplink speeds. Support for 24x LTE Bands and 8x UMTS/WCDMA Bands

Dual-SIM LTE Failover for true Business Continuity

Perle IRG5500 Routers and Gateways come with redundant SIM slots to ensure reliable network connectivity and cellular multihoming support in LTE and HSPA-based networks. This is particularly useful:

- When the primary carrier contract data cap has been exceeded, the IRG5500 will automatically switch over to a back-up data plan.
- When the IRG5500 is deployed in a mobile environment long-distance roaming can be enabled and used.
- When there is a lack of coverage, or carrier network failure, the IRG5500 will automatically switch over to a back-up carrier.

Edge Routers with Enterprise-Grade Routing Capabilities

Perle does not charge any annual subscription or license fees to maintain operation, download software updates, or access features. IRG5500 routers have all the of the advance routing functionality found in the most advanced enterprise routers. **Extensive protocol routing support** means they can be easily deployed in hierarchical or large mesh network structures. A fast CPU and lots of memory ensure the router can handle a consistent and heavy workload all day long.

- Remote authentication (RADIUS, TACACS+, LDAP) management, integrates with enterprise-grade systems to control access to devices in the field.
- Software image CRC control protects the software upgrade process against unwanted software corruption and malware
- High-speed OpenVPN, IP Security (IPsec), Triple Data Encryption Standard (3DES), and Advanced Encryption Standard (AES) encryption for data privacy over the Internet.
- Intrusion prevention enforces security policies in a large enterprise or service provider networks.
- Perle's cloud-based centralized management solution puts all your network and IT infrastructure into a single application and provides secure reliable access and visibility during normal operations and critical network failures. Scalable to suit any business requirement, **Cloud Centralized Management** reduces human error and guarantees repeatability.

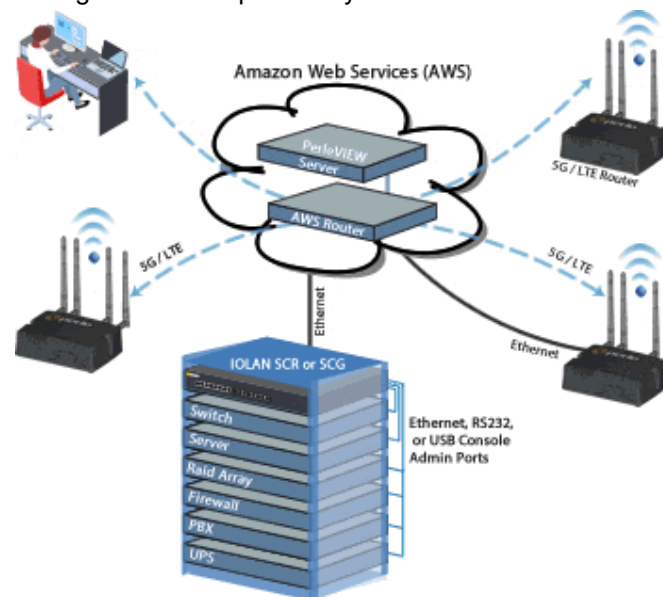
Integrated Zone-Based Policy Firewall

The IRG5500 built-in firewall offers intuitive policies for multiple-interface routers to **protect inside networks from unauthorized access** by users on an outside network. The firewall also protects inside networks from each other, for example, by keeping a human resources network separate from a user network. If there are network resources that need to be available to an outside user, such as a web or FTP server, these resources can be placed on a separate network behind the firewall, in a demilitarized zone (DMZ). The firewall will allow limited access to the DMZ, but because the DMZ only includes the public servers, any attacks there will not affect the inside network. The firewall controls when inside users access outside networks (for example, access to the Internet), by allowing only certain addresses out, by requiring authentication or authorization, or by coordinating with an external URL filtering server. A deny-all (blacklist) policy can be used to prohibit traffic between firewall security zones until an explicit policy is applied to allow desirable traffic. Router ports are assigned to zones and firewall inspection policies are applied to traffic moving between the zones. Firewall inter-zone policies come with considerable flexibility and granularity so that different firewall inspection policies can be applied to the same router port.

High Availability Access and Enhanced Security with 2 Factor Authentication

With multiple concurrent VPN sessions and 2 Factor Authentication, Perle IRG5500 Routers enable secure communications to multiple back-end systems.

- Remote authentication (RADIUS, TACACS+, LDAP) management, integrates with enterprise-grade systems to control access to devices in the field.
- Software image CRC control protects the software upgrade process against unwanted software corruption and malware
- High-speed OpenVPN, IP Security (IPsec), Triple Data Encryption Standard (3DES), and Advanced Encryption Standard (AES) encryption for data privacy over the Internet.
- Intrusion prevention enforces security policies in a large enterprise or service provider networks.
- Perle's cloud-based centralized management solution puts all your network and IT infrastructure into a single application and provides secure reliable access and visibility during normal operations and critical network failures. Scalable to suit any business requirement, **Cloud Centralized Management** reduces human error and guarantees repeatability.



GPS / Global Navigation Satellite System (GNSS) Included

GPS and GNSS (Galileo, Glonass, and Beidou) are included by default in all IRG5500 Routers and Gateways. This enables **real-time location tracking** of remote assets. Also, you can get **real-time network clock updates** in the router, or any attached equipment, for accurate time-stamp usage in time-sensitive applications.

Cutting-edge design certified for a wide range of deployment scenarios

High-performance components and features enable customers to take advantage of broadband network speeds while running **secure concurrent data, voice, and video services**. All IRG5500 routers have **high MTBF rates** because they are developed with certified high-end components to provide superior reliability and uninterrupted operation.

Primary or failover back-up connectivity

Perle is the only company to offer LTE edge routers with all of the enterprise-grade features and protocols needed to be a fully functional primary or failover back-up LTE Router. If the main network connection goes down for any reason, Perle IRG5500 routers provide an always-on, cost-effective redundant connection. As a failover solution, wireless speeds are fast enough to keep your network humming and distributed enterprises can enjoy the same reliability and competitive advantage as large enterprises. The relatively low cost of LTE for branch continuity means a greater return on investment and scalability for multiple locations. Simply put, an IRG5500 LTE Router ensures maximum uptime, cost-effective scalability, and ease of deployment and management with limited IT resources.

Compact light-weight design

Deploy in many different environments where space, heat dissipation, and low power consumption are critical factors. The optional DIN-Rail mounting brackets or wall-mount brackets ensure easy installation.

Ultra-Low-Power

IRG5500 LTE Routers are designed to operate on limited power sources by consuming less than 1 Watt in idle mode. This makes them ideal for battery and solar applications. In addition, Standby Mode can be used to protect power sources by dropping power consumption to a target of 53 mW. This can be triggered by timers, low voltage detection, or I/O. IRG5500 Routers also work with the existing power infrastructure in 2G/3G deployments that are migrating to LTE thus, eliminating the need to invest in replacement equipment.

Rugged Environment Certifications

- Rugged die-cast aluminum IP54 enclosure for dust & water ingress
- Shock and vibration resistance certified to MIL-STD-810G, SAE J1455 & EN 61373
- Hazloc per IECEx/IECx, ATEX, & ANSI/ISA Class 1 Div 2
- -40°C to +70°C operating temperature

Vehicle Deployment

- Cellular tower connectivity can be established and maintained at up to 100 meters per second (360km/224mi per hour)
- E-Mark Certification, ISO 7637-2, and ISO 16750-2 Compliance
- Built-in battery charge protection, with no requirement for external power conditioning, to safeguard vehicle operation
- Vehicle awareness applications can be used to remotely monitor vehicle speed, acceleration, position, and more.
- Ignition Power Management can schedule a delayed shutdown or startup of the IRG5500 based on the vehicle ignition status

FirstNet Ready™ Deployments

Built for first responders and field personnel, the **IRG5500+ FN LTE Routers are certified Band 14 and FirstNet Ready™**. With long range Gigabit Wi-Fi and Gigabit Ethernet, and up to 600 Mbps downlink and 150 Mbps speeds over LTE-Advanced Pro, fleets can be united with the enterprise network to enable multiple field applications to work simultaneously, further and faster from the vehicle than ever before. Host up to 128 simultaneous Wi-Fi clients, and concurrently connect multiple mission critical applications in and around the vehicle including laptops, DVRs and tablets. Additionally, live video streaming, and rapid and secure access to remote databases, such as record management systems makes the IRG5500+ FN ideal.

Railway Deployment

Perle IRG5500 Routers and Gateways are fully approved and certified for Railway rolling stock application deployments. They are perfectly suited for installation directly in the train or subway cabin, the dusty and humid environments of metro tunnels or, the enclosures found alongside rail tracks.

- European Certifications EN50155 & EN50121
- International Certifications IEC60571 & IEC62236
- Cellular tower connectivity can be established and maintained at up to 100 meters per second (360km/224mi per hour)

WAN Connectivity

LTE, 10/100/1000 Ethernet, & Wi-Fi

Central Management Configuration

Perle IRG5500 Routers and Gateways use **PerleView**, a web-based server configuration tool that simplifies setup and deployment. Centralized management capabilities give network managers visibility and control over network configurations at remote sites. Other Perle IRG5500 management capabilities include:

- Fast Setup - Available when the router is in factory default (initial) configuration
- Web Manager - Available using a browser
- CLI - Command Line Interface
- SNMP - Using a Network Management System
- **No ongoing monthly or yearly licensing fees.**

Serial Port

Perle IRG5500 Routers come with an IOLAN Secure Device Server built-in for a secure serial to IP (Ethernet/LTE) connectivity applications. This makes it ideal for applications that require remote device console management, data capture, or monitoring. Some of the supported applications are:

- **TrueSerial® packet technology** delivers the most authentic serial connections across Ethernet for serial protocol integrity.
- Serial Port Access: connect directly using Telnet / SSH
- Terminal Server: Telnet, SSH, Rlogin, LPD, RCP printer
- Serial machine to IP (Ethernet)
- Raw serial data over Ethernet/LTE/TCP/IP/UDP
- Virtual modem simulation
- TruePort redirector
- ModBus, DNP3 and IEC-870-5-101 encapsulation
- Line access permissions via TACACS+ and RADIUS servers
- Dial direct serial: PPP, PAP/CHAP, SLIP

Software Feature Set: IRG5500 Cellular LTE Routers

Functionality
Gateway (IP Passthrough Bridging), Switching, Routing
Routing / Switching Protocols
IPv4/IPv6, Static Routing, RIP/RIPNg, NAT, OSPFv3, BGP-4, IPv6 Encapsulations (GRE, 6in4), VRRP, Port Routing, STP, MSTP, PPPoE V6, LLDP
IP Applications
DDNS, DNS Proxy / Spoofing, relay, client, Opt. 82, NTP & SNTP (versions 1, 2, 3, 4) with support from GPS, GNSS & Network Carrier timing DHCP / DHCPv6 server & BOOTP for automated network-based setup
VLAN & VPN
VLAN, IPSec, OpenVPN, VPN Failover (16 concurrent VPN tunnels)
GPS & GNSS Reports
GPS for tracking equipment over RS232, USB, and Ethernet NMEA 0183 v3.0, TAIP, CSV
LTE & Wi-Fi Applications
Private LTE / CBRS - ability to select a specific band for LTE connection Wi-Fi Hot Spot (for models with optional WLAN support)

Firewall & Security

Built in Zone-Based Policy Firewall
Access Control Lists (list & ranges & time)
Filter based on MAC Address, IP, Port, Protocol, User
AAA, LDAP, Radius, TACACS+
802.1x
Layer 2 MAC address filtering
Certificate Support (X.509)
Port Forwarding
BGP Communities

Security Features

Security via remote authentication (LDAP, Radius and TACACS+)
Trusted host filtering (IP filtering), allowing only those hosts that have been configured in the host table access to the router.
Idle LTE port timers, which close a connection that has not been active for a specified period of time
Ability to disable services (for example, Telnet, TruePort, Syslog, SNMP, Modbus, HTTP) for additional security
Ability to individually disable network services that won't be used by the SSH client/server connections (SSH 1 and SSH 2)
Logging via syslog
Ability to disable Ping responses
Ability to setup Access Lists (ACL's) to restrict traffic
Ability to set up firewalls to restrict incoming and outgoing packets
SSH client/server connections (SSH 1 and SSH 2)
SSL/TLS client/server data encryption (TLSv1/1.1/1.2 and SSLv2)
Ability to setup Virtual Private Networks (VPNs)
Wireless Security; WEP, WPA2-PSK & Enterprise (EAP, PEAP, LEAP), 802.11i
Wireless cellular security using PAP or CHAP authentication
Dynamic DNS with DYNDNS.org
Domain Name Server (DNS) support
Email alert notification
SSH connections (supported ciphers are Blowfish, 3DES, AES-CBC, AES-CTR, AES-GMC, CAST, Arcfour and ChaCha20-Poly1305)
SSL/TLS connections
RIP authentication (via password or MD5)
OSPF
2F Authentication
Management Access Control
SNMPv3
DMZ
FIPS 140-2
Secure HTTP/HTTPS/FTP/Telnet Authentication Proxy

Logging, Reporting & Alerts

Sys Log, Event Type, Report Type, Alerts & Monitoring, Triggers Status Screen Report, Data Usage, Diagnostic

Management

PerleVIEW Management, WEB (HTTP/HTTPS), SNMPv1/v2/v3, RESTful API, SMS Control, Load Balancing, CLI/Piping, Login Banner, E-mail, Ping, Telnet, FTP, Connection on Demand

Network Assist: This Windows-based desktop application helps busy IT managers configure and monitor the status of deployed Perle devices.

Automatic check for software updates.

Software updates available over FTP, HTTP, HTTPS, SCP, SFTP, and TFTP

OCI Container (Docker-based) implementation

Perle's OCI Containers are based on the Docker platform and add native Docker capabilities to all IRG Routers. It supports public and private container registries such as Docker Hub, Amazon ECR, Opencontainers, GitHub, BuildKit, Podman, and Buildah. Perle IRG Routers provide the ideal framework to provision, manage, and run any application or container found, or built, in these registries.

- Run **all OCI Container types**:
 - Runtime Specification (runtime-spec),
 - Image Specification (image-spec)
 - Distribution Specification (distribution-spec)
- Multiple OCI Containers can run simultaneously
- OCI Containers can be accessed on private and public registries

Power Management (General)

Power Processor Saving Mode – this feature optimizes idle power consumption, saving energy by reducing performance where possible.

Power Saving Features including; LED power saving mode, Smart Standby Mode, Power saving strategies such as turning off unused interfaces (USB, Serial, Ethernet), turning off GPS and adjusting the Ethernet rate.

Operating Power Modes

- Standard – When power is applied to the router, it will power up. All inputs are ignored (from a power up and Smart Standby perspective). This is the default.
- Smart Standby Mode – you can configure a combination of one or two user defined conditions to determine when the router is powered up and when it goes into Smart Standby Mode.

Power Management (Ignition Sense)

Configurable time delay for shutdown / start based on vehicle ignition status
 Low Voltage Standby function to prevent battery drain
 Operating Power Mode (Ignition mode) – this mode monitors the ignition input and goes in and out of Smart Standby based on the voltage of the ignition input. When the voltage on the ignition input goes below a user pre-defined threshold, the router will be powered down into Smart Standby Mode. When the voltage on the ignition input goes above the Perle Wireless LTE Router pre-defined value the power will be restored. You can configure a combination of inputs and schedule to control Smart Standby Mode.

GPIO Capabilities

One GPIO configurable as high side pull-up / dry contact, analog input, digital input, low side current sink output, digital output/open drain, or Pulse Counter.
 One GPIO configurable as Vehicle ignition sense or analog input
 Two Digital Inputs configurable as high side pull-up / dry contact, digital input, or Pulse Counter
 One normally open (NO) relay contact

Hardware Specifications: IRG5500 Cellular LTE Routers

LTE	LTE-A CAT6. 300Mbps downlink and 50Mbps uplink speeds LTE-A PRO CAT12. 600Mbps downlink and 150Mbps uplink speeds FirstNet Ready™ certified for Band 14 (B14). LTE-A PRO CAT12. 600Mbps downlink and 150Mbps uplink speeds
-----	--

<p>Frequency Bands Data & SMS Operation over 4G LTE with fallback networks DC-HSPA+ / HSPA+ / HSPA / UMTS (WCDMA)</p>	<p>4G/LTE Bands (15) 2100(B1), 1900(B2), 1800(B3), AWS(B4), 850(B5), 2600(B7), 900(B8), 700(B12), 700(B13), 800(B20), 1900(B25), 850(B26), 700(B29), 2300(B30), TDD B41</p> <p>3G HSPA/HSPA+ Bands (6) 2100(B1), 1900(B2), 1800(B3), AWS(B4), 850(B5), 900(B8)</p> <p>Public Safety Band Band 26</p> <p>4G/LTE Bands (24) 2100(B1), 1900(B2), 1800(B3), AWS(B4), 850(B5), 2600(B7), 900(B8), 1800(B9), 700(B12), 700(B13), 850(B18), 850(B19), 800(B20), 850(B26), 700(B28), 700(B29), 2300(B30), 1500(B32), TDD B41, TDD B42, TDD B43, TDD B46, CBRS B48, 1700(B66)</p> <p>3G HSPA/HSPA+ Bands (9) 2100(B1), 1900(B2), 1800(B3), AWS(B4), 850(B5), 800(B6), 900(B8), 1700(B9), 850(B19)</p> <p>Public Safety Bands Band 26, 28</p> <p>4G/LTE Bands (24) 2100(B1), 1900(B2), 1800(B3), AWS(B4), 850(B5), 2600(B7), 900(B8), 1800(B9), 700(B12), 700(B13), 700(B14), 850(B18), 850(B19), 800(B20), 850(B26), 700(B29), 2300(B30), 1500(B32), TDD B41, TDD B42, TDD B43, TDD B46, CBRS B48, 1700(B66)</p> <p>3G HSPA/HSPA+ Bands (8) 2100(B1), 1900(B2), AWS(B4), 850(B5), 800(B6), 900(B8), 1700(B9), 850(B19)</p> <p>Public Safety Bands Band 14, 26</p>
<p>Cellular Antenna</p>	<p>Frequency Range: 704-902-928-960/1427.9-1575.42/1710-2170/2400-2480-2690MHz Gain: 3 dBi Impedance: 50 ohm Voltage Standing Wave Ratio: <3.0 (typical) Radiation: Omni-Directional Connector: SMA Male (Swivel) Dimensions: 135.6 x 20.1 mm / 5.34 x 0.8 in</p>
<p>SIM</p>	<p>Dual Mini-SIM 15 x 25mm (or 2FF)</p>

GPS / GNSS	Wide-band GNSS: 1559-1606 MHz GPS: 1575.42 MHz / GLONASS: 1602 MHz / BeiDou: 1561.098 MHz / Galileo: 1575.42 MHz / QZSS: 1575.42 MHz Simultaneous tracking: Up to 30 channels Active GNSS antenna support Reports: NMEA 0183 V3.0, TAIP
GPS / GNSS Passive Antenna	GNSS Applications: GPS, Glonass, Galileo, Beidou Frequency Range: 1561MHz~1606 MHz Gain: 4 dBi (typical) Impedance: 50 Ohm Voltage Standing Wave Ratio: 2.0 (typical) Polarization: RHCP SMA (M) straight Dimensions: 41.9 x 47.3 x 16.3 mm / 1.65 x 1.86 x 0.64 in RG-174 Cable Length: 5 m / 16.4 ft
Models with Integrated Wi-Fi	IRG5521 IRG5541 IRG5521+ IRG5541+ IRG5521+ FN IRG5541+ FN
LAN Standards	IEEE 802.11ac complaint & backward compatible with 802.11a/b/g/n
Topology	Infrastructure (AP) and up to 128 Client modes
Radio	Dual-Band Radio ; 2.4GHz and 5GHz 20, 40Mhz SISO 2.4-GHz
Data Rate	up to 867Mbps
Security	WEP, WPA-PSK, WPA2-PSK & Enterprise (EAP, PEAP, LEAP), 802.11i (includes hardware-accelerated Advanced Encryption Standard [AES]), 802.1x supplicant
WLAN Antenna (optional accessory)	Frequency Range: 2.4GHz & 5GHz Gain: up to 3 dBi Impedance: 50 ohm Voltage Standing Wave Ratio: 2.0 (typical) Radiation: Omni-Directional Connector: RP-SMA (Swivel) Female Dimensions: 109 x 10.1 mm / 4.3 x 0.4 in"

Models with 2x 10/100/1000 Ports	IRG5520 IRG5521 IRG5520+ IRG5521+ IRG5521+ FN
Models with 4x 10/100/1000 Ports	IRG5540 IRG5541 IRG5540+ IRG5541+ IRG5541+ FN
Speed	Software selectable 10/100/1000 Ethernet, Auto Software selectable Half/Full/Auto duplex
Ethernet Isolation	1.5Kv Magnetic
Standards	IEEE 802.3 for 10Base-T, IEEE 802.3u for 100Base-TX and 100Base-FX, IEEE 802.3ab for 1000Base-T, IEEE 802.3x for Flow Control
Processing Type	Store and Forward
MAC Address Table Size	8K
VLAN ID range	1 to 4000
USB-C	1 x USB 3.2 Type-C with a transfer rate up to 5Gbps Console Port or Ethernet over USB
RS232 Serial	1 x RS232 DB9 female connector Serial Port Speeds: 300bps to 230Kbps with customizable baud rate support Data Bits: 5,6,7,8-bit protocol support Parity: Odd, Even, Mark, Space, None Flow Control: Hardware, Software, Both, None Serial Port Protection: 15Kv Electrostatic Discharge Protection (ESD) Processing Type - Store and Forward
RS485 Serial	half-duplex

One GPIO Input	Digital Input & Pulse Counting VDC: 0 for $\leq 1V$, 1 for $\geq 2.7V$ Dry Contact Max Current range: min 0.6mA @ 7V and max 3.5mA @ 36V Current Sink Output: 0.5A @ 12v
Ignition Sense	Analog Input: 0.5V to 36V
Two Digital Inputs	Digital Input & Pulse Counting VDC: 0 for $\leq 1V$, 1 for $\geq 2.7V$
One Alarm Relay	Normally Open (NO) dry contact: 1A @ 24VDC
Microprocessor	Dual Core Cortex-A53 64bit ARMv8 1.2GHz
RAM	1GB DDR4
Flash	4GB MMC
LED Indicators	Power: indicates power status Serial: indicates serial RS232 connection status and Tx data WWAN: indicates Wireless Wide Area Network status GNSS: indicates Global Navigation Systems for GPS, Galileo, Glonass and Beidou status VPN: indicates VPN presence (for Router Models: IRG5520x & IRG5540x only) WLAN: indicates Wireless Lan status (for Router Models: IRG5521x & IRG5541x only) Internet: indicates Internet connectivity
Environmental Specifications	Operating Temperature: $-40^{\circ}C$ to $70^{\circ}C$ / $-40^{\circ}F$ to $158^{\circ}F$ Storage Temperature: $-40^{\circ}C$ to $85^{\circ}C$ / $-40^{\circ}F$ to $185^{\circ}F$ Operating Humidity: 0% to 95% non-condensing Storage Humidity: 0% to 95% non-condensing Operating Altitude: 3048 m / 10,000 ft Cooling: EN 60068-2-1 Dry heat: EN 60068-2-2 Damp: EN 60068-2-30 MTBF (no Wi-Fi): > 234,435 hours MTBF (with Wi-Fi): > 192,137 hours (Calculation model based on MIL-HDBK-217-FN2 @ $30^{\circ}C/86^{\circ}F$) Heat Output (BTU/HR)
Enclosure	Die Cast Aluminium

Mounting	Desktop, Panel, or wall mount DIN Rail attachment bracket is optional. (Mounts to standard 35 mm DIN rail in accordance with DIN EN 60175 vertically or horizontally)
Ingress Protection Rating	IP54
Power/Current Consumption Typical Use (connected/with Activity)	IRG5520: 0.31A / 3.77W IRG5521: 0.37A / 4.4W IRG5540: 0.34A / 4.07W IRG5541: 0.39A / 4.70W IRG5520+: 0.35A / 4.22W IRG5521+: 0.40A / 4.79W IRG5540+: 0.38A / 4.52W IRG5541+: 0.42A / 5.09W IRG5521+ FN: 0.40A / 4.79W IRG5541+ FN: 0.42A / 5.09W Note: up to 0.08A / 1W more in power savings can be achieved through shutting down the USB port, LEDs, GPS, as well as turning down router processor speed
Power/Current Consumption Idle Mode (connected/no Activity)	IRG5520: 0.30A / 3.56W IRG5521: 0.35A / 4.16W IRG5540: 0.32A / 3.86W IRG5541: 0.37A / 4.46W IRG5520+: 0.32A / 3.84W IRG5521+: 0.36A / 4.37W IRG5540+: 0.35A / 4.14W IRG5541+: 0.39A / 4.67W IRG5521+ FN: 0.36A / 4.37W IRG5541+ FN: 0.39A / 4.67W
Power/Current Consumption Standby Mode (no activity with all ports shutdown)	All models: 3.9mA / 46.8mW
Power Input	12/24 VDC Nominal (7 to 36 VDC Range)
Ignition Sense	VDC voltage variation with On/Off and timer
External Power Supply (optional)	110 / 220 VAC Power supply
Power Connector	

Power Line Protection	Surge: 8KV (EN61000-4-5 common mode), 2KV (EN61000-4-5 differential and common modes)
Reverse polarity protection	YES
Vehicle Transient voltage protection	Built-in protection against voltage transient including 5 VDC engine cranking and +200 VDC load dump
Product Weight & Dimensions	Weight: 0.59 Kg / 1.30 lb Dimensions: 146 x 99 x 45 mm / 5.75 x 3.89 x 1.77 in
Shipping Weight & Dimensions	Weight (with Antenna): 1 Kg / 2.20 lb Weight (without Antenna): 0.79 Kg / 1.74 lb Dimensions: 270 x 170 x 70 mm / 10.63 x 6.70 x 2.75 in
Cellular/Telecom Regulatory Approvals	FCC/ICES, RED, PTCRB/CTIA, CE FCC/ICES, PTCRB/CTIA
Carrier Certifications	AT&T Verizon IRG5500 T-Mobile for Wholesale T-Mobile for Business AT&T Verizon IRG550+ T-Mobile for Wholesale T-Mobile for Business AT&T
Shock & Vibration	SAE J1455 (Vibration: Section 4.10.4.1 and 4.10.4.2 Cab Mount, Shock: Section 4.11.3.4 Operational Shock) MIL-STD-810G (Shock: test method 516.6. Operational Vibration: test method 514.6) EN 61373 (Shock, Vibration long-life / functional-random)
Hazloc	IECEx/IECx, ATEX/Ex Class 1 Zone 2, Directive 2014/34/EU ANSI/ISA 12.12.01, Class 1 Division 2 Groups A-D, ISA 12.12.01-2015
Vehicle Usage	E-Mark (UN ECE Regulation 10.04, ISO 7637-2:2011 and ISO 16750-2:2012)
Velocity	< 100m/s

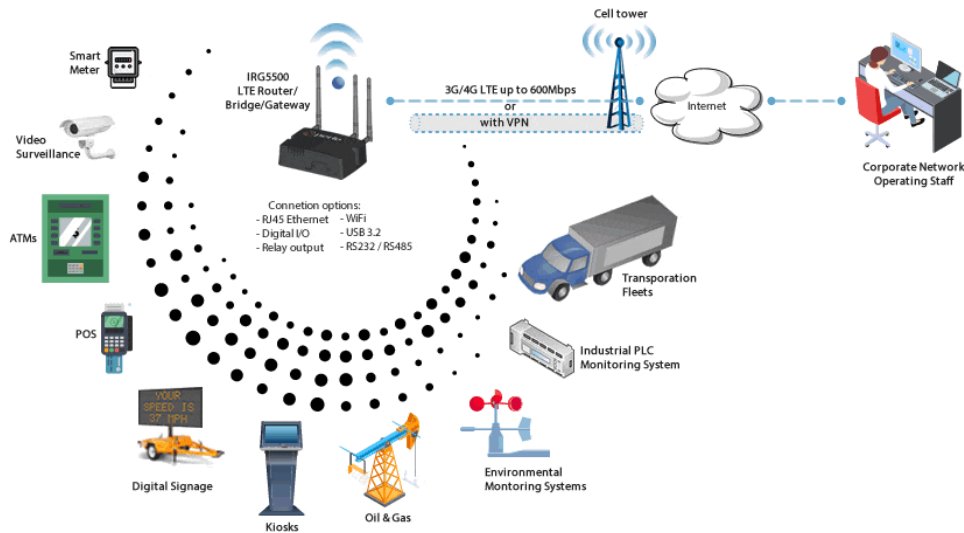
Railway	EN 50155: 2017 Clause 4.3.6 EN 50121-1: 2017 EN 50121-3-2: 2016 EN 50121-4: 2016 IEC 60571:2012 For Clause 12.2.8 & 12.2.9 IEC 62236-1: 2018 IEC 62236-3-2: 2008 IEC 62236-4: 2018
Emissions	FCC 47 Part 15 Subpart B, Class B ICES-003 Issue 6 Class B (Canada) FCC Part 15.247 Subpart C (2.4 Ghz) FCC Part 15.407 Subpart E (5 Ghz) ANSI C63.4 Class B (Radio-Noise Emissions from Low-Voltage Electrical and Electronic Equipment in the Range of 9 kHz to 40 GHz) EN61000-3-2: 2014 (Limits for Harmonic Current Emissions) EN61000-3-3: 2013 (Limits of Voltage Fluctuations and Flicker) CISPR 32:2015/EN 55032:2015 Class B (Electromagnetic compatibility of multimedia equipment - Emission requirements)
Immunity	CISPR 25:2016/EN55025: (Vehicles, boats and internal combustion engines - RDC) CISPR 35:2016/EN 55035:2017 (IR) EN 61000-4-2:2009 (ESD) +/-8 kV (Contact) +/-15 kV (Air) Operating mode: powered on EN 61000-4-3: 2006 + A1:2007 + A2:2010(RS) EN 61000-4-4:2012 (EFT) 2 KV (Criteria A) EN 61000-4-5:2014+AMD1:2017 (Surge) 2KV (line to earth), 1.5KV (line to line) EN 61000-4-6: 2013 (CS) EN 61000-4-8: 2009 (PFMF) EN 61000-4-9: 2016 (PMF) EN 61000-4-11: 2004 + A1:2017 EN 61000-4-16 EN 61000-6-4: 2007 + A1: 2011 ISO 7637-2:2004
Safety	UL/IEC 61010-1 UL/IEC 61010-2 UL/EN/IEC 62368-1 (previously 60950-1) CAN/CSA C22.2 No. 62368-1

Cellular / WWAN Radio Standards	<p>EN 300 328 (V2.1.1:2019), ETSI EN 300 328 V2.1.1 (2016-11) (Electromagnetic compatibility)</p> <p>EN 301 893 (V1.8.1:2015), ETSI EN 301 893 V2.1.1 (2017-05) (Radiated spurious emissions)</p> <p>EN 301 489-1 (V2.1.1:2017-02), ETSI EN 301 489-1 V2.1.1 (2017-02)</p> <p>EN 301 489-17 (V3.2.0:2017-03), ETSI EN 301 489-17 V3.1.1 (2017-02)</p> <p>EN 301 489-19 (V2.1.1:2019)</p> <p>EN 301 908-1 v11.1.7:2018-12, ETSI EN 301 908-1 V7.1.1 (2015-03) (Radiated emissions RF control and monitoring)</p> <p>EN 301 908-2 v11.1.2:2017-08, ETSI EN 301 908-2 V11.1.2 (2017-08) (RF conducted)</p> <p>EN 301 908-13 v11.1.2:2017-07, ETSI EN 301 908-13 V11.1.2 (2017-07) (RF Conducted)</p> <p>EN 62311:2019, IEC 62311 Ed. 1.0 b:2007 (Human exposure restrictions for radio frequency electromagnetic fields)</p>
Environmental Specifications	Reach, RoHS3, and WEEE Compliant
ECCN	5A992
HTSUS Number	8517.62.0020

Application Diagrams

M2M / IoT LTE Connectivity

Perle IRG5500 LTE Routers offer always-on M2M connectivity that is secure, reliable, cost-effective, and easy to deploy. Featuring an industrial-grade ruggedized housing, Perle IRG5500 Routers are a versatile and compact solution that provides 2G/3G/4G LTE connectivity with built-in GPS capabilities and optional Wi-Fi support. Perle IRG5500 Routers are ideal for solving wireless connectivity challenges in a variety of vertical markets including video surveillance, digital signage, home security, oil and gas exploration, kiosks, fleet management, smart grid, vehicle diagnostics, telematics and many more.



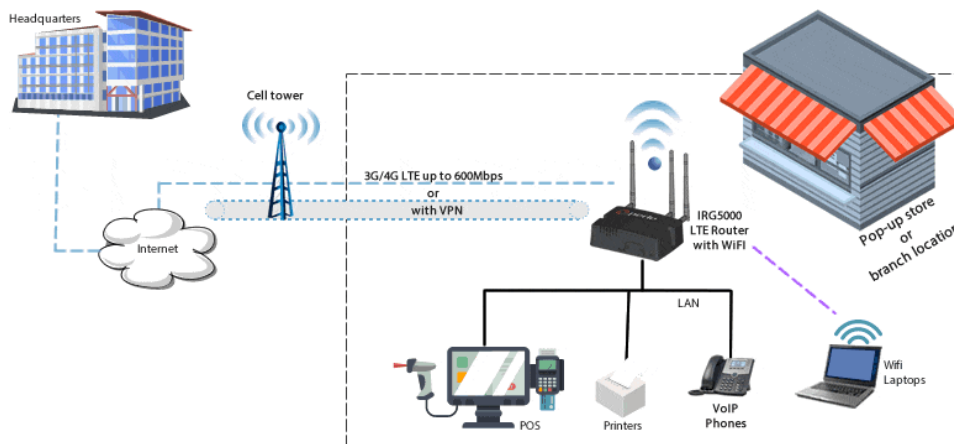
LTE Failover & Out of Band Management with "Four-Nines" (99.99%Up-time)

When the wired link is down, network access can be maintained with automatic failover to LTE. There are several ways to determine with the Primary WAN is down. One example, is to use the **Health Monitoring** function where IRG5000 will ping a destination IP through the primary route. If there is no response, the IRG5000 router will initiate a direct connection using the back-up LTE route. The relatively low cost of LTE for business continuity means a greater return on investment and scalability for multiple locations that have limited IT resources. By deploying Perle IRG5000 LTE Routers, businesses will have on-demand network connectivity that is quick to deploy, simple to manage, and ensures maximum uptime.



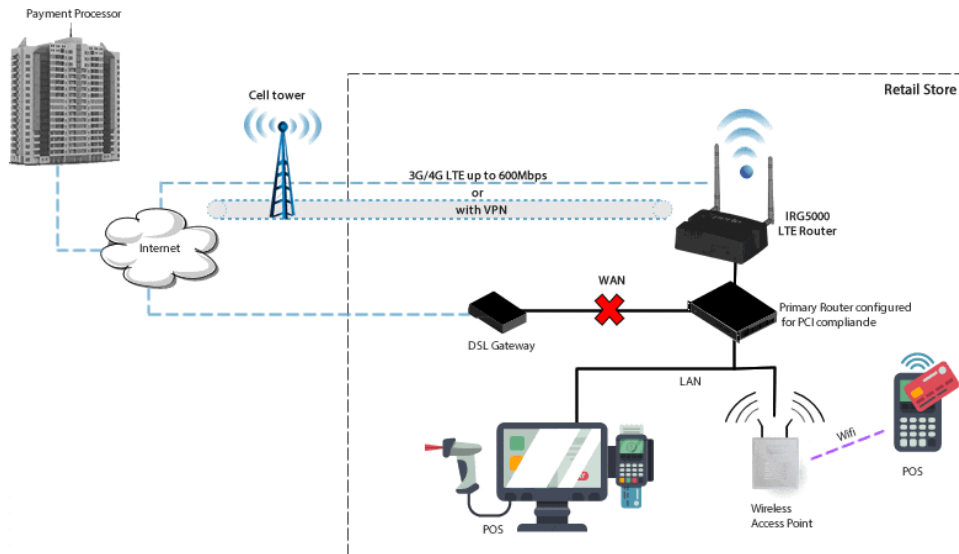
Primary Router Deployments

For pop-up stores, or branch locations with limited IT resources, IRG5500 Routers with Wi-Fi, are an easy to deploy "all-in-one" solution. This single box will function as an LTE Router, two-port or four-port 10/100/1000 Ethernet Switch, and Wi-Fi Access Point. **IPv4 and IPv6** is supported on both the WAN and LAN sides.



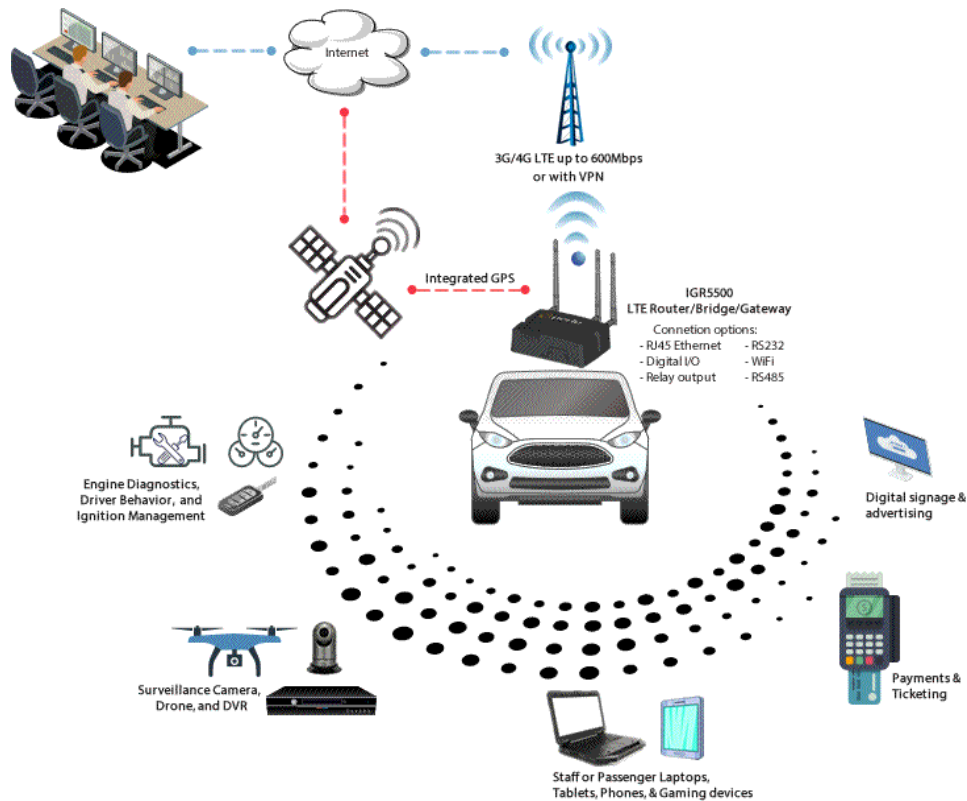
PCI Compliant LTE Failover

The credit card industry requires retailers to comply with Payment Card Industry (PCI) standard to maintain a secure environment when processing payment card transactions. For these transactions, a Perle IRG5000 Router acts as a wireless data conduit (Gateway) for routers and POS (point-of-sale-terminals) that have been configured for PCI compliance. The USBnet is on a different subnet from the point-of-sale-terminal. All security protocols must be established from the point-of-sale terminal to the payment processor. Payment card terminals must be on a dedicated LAN or VLAN. The Perle IRG5000 Router configured on gateway mode must be connected to a router that is configured for PCI compliance.



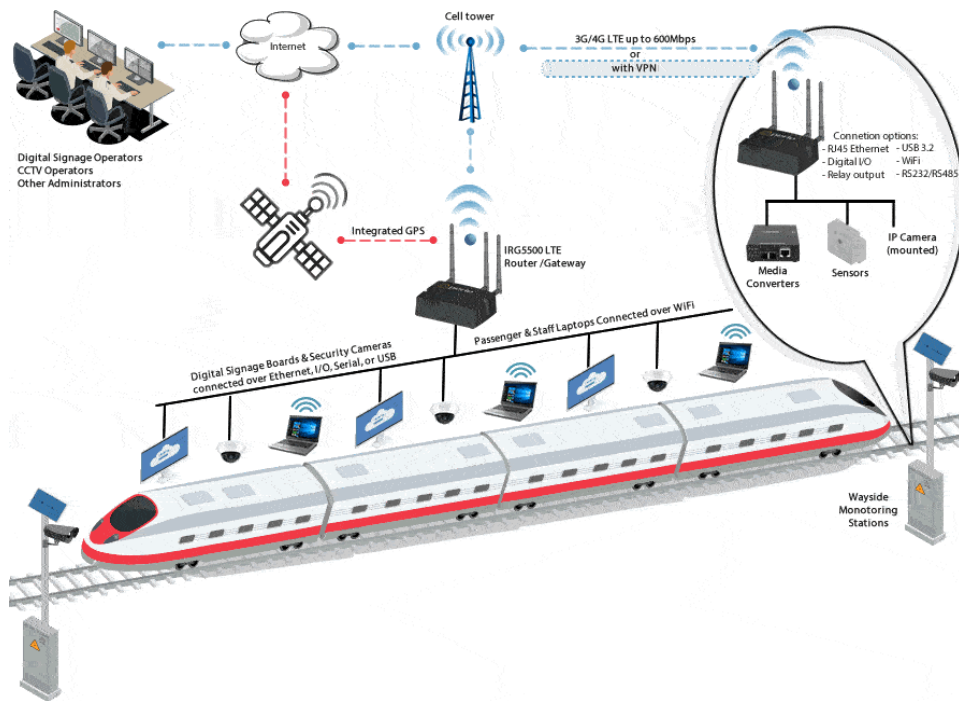
Vehicle Area Networks (VANs)

With GPS and GNSS (Galileo, Glonass, and Beidou) included by default, an IRG5500 LTE Router serves as the main connectivity hub in creating a VAN. This enables real-time location tracking of remote assets. In addition, real-time network clock updates for the router, or any attached equipment, ensures accurate time-stamp usage in time-sensitive applications. In-vehicle telemetry, sensors, surveillance cameras, ticketing, and other devices are connected to transmit data to the cloud or headquarters over LTE. In public transportation applications, like taxis, buses, street cars, and trains, the Wi-Fi can be used to provide free or paid internet access to customers. With the ability to establish and maintain cellular tower connectivity at up to 100 meters per second (360km/224mi per hour), the IRG5500 provides reliable LTE access in any moving vehicle application. Ignition Power Management can be used to schedule a delayed shutdown or start-up of the IRG5500 based on the vehicle ignition status to ensure all data is safely transmitted. Dual SIM slots to ensure reliable network connectivity when the IRG5500 needs to automatically switch over to a back-up data plan or carrier because the primary carrier contract data cap has been exceeded, there is a lack of coverage or carrier network failure, or long-distance roaming is enabled and used.



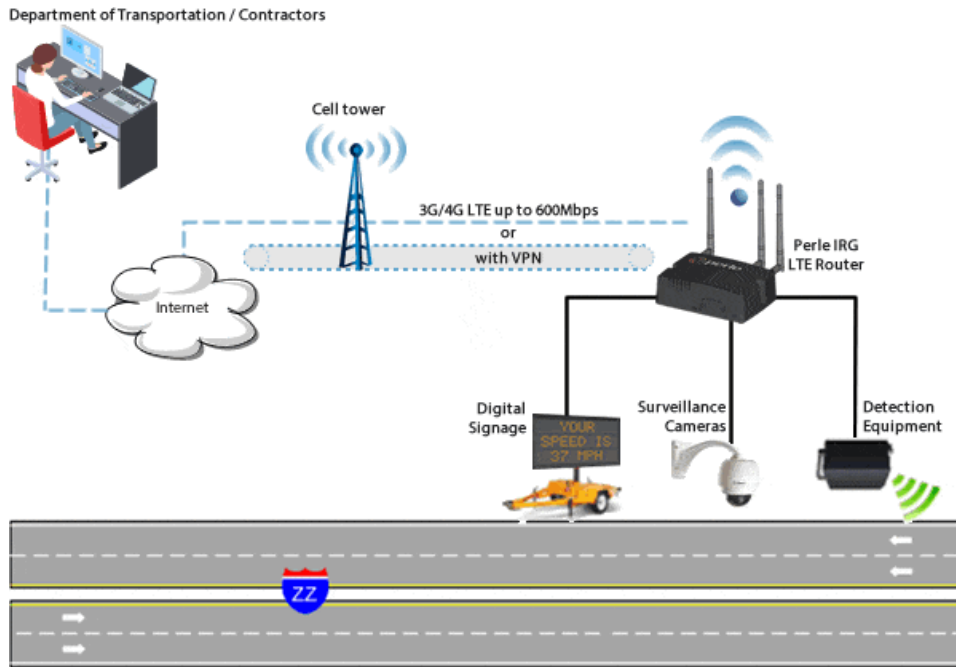
Communications Gateway for Railway

IRG5500 Routers are compliant with railway regulations and have the operating temperature, vibration, and emission certifications required for installation on trains, light rail, subways, and trams. They are perfectly suited for installation directly in the train or subway cabin, the dusty and humid environments of metro tunnels or, the enclosures found alongside rail tracks. Central administration centers can monitor rail traffic, switching status, track conditions, weather conditions, and security data gathered by the sensors and other equipment located in wayside monitoring stations. Onboard, the IRG5500 railway router, with integrated Wi-Fi access point, enables travellers to access services and applications, such as music, games, cinema, books, and Internet connectivity for email and other personal applications. Connecting security cameras, informational displays, and other equipment allows for a wide variety of operational tasks to be undertaken by the control staff. With the ability to establish and maintain cellular tower connectivity at up to 100 meters per second (360km/224mi per hour), the IRG5500 is the best LTE Router for any rolling stock application.



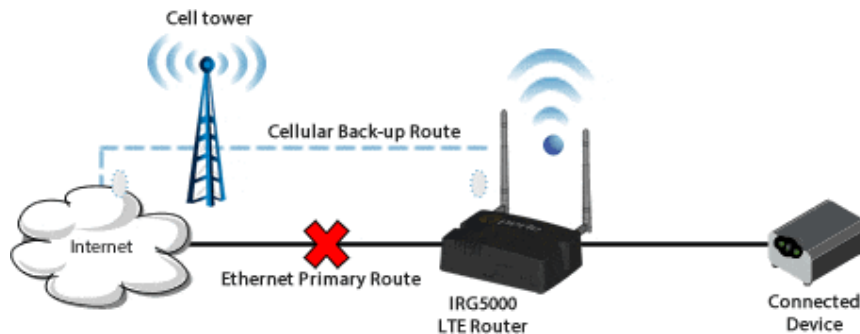
Roadway Smart Work Zones (SWZ)

Intelligent Transportation Systems (ITS) and Smart Work Zones (SWZ) are used to monitor and improve roadway construction zones. An LTE Router enables the communication between the components of the system. Real-time information can be transmitted to Portable Changeable Message Signs (PCMS) to display traffic conditions, travel times, incident information, and advisory messages. Data can be collected from cameras and sensors near the work zone and sent to the central processing system.



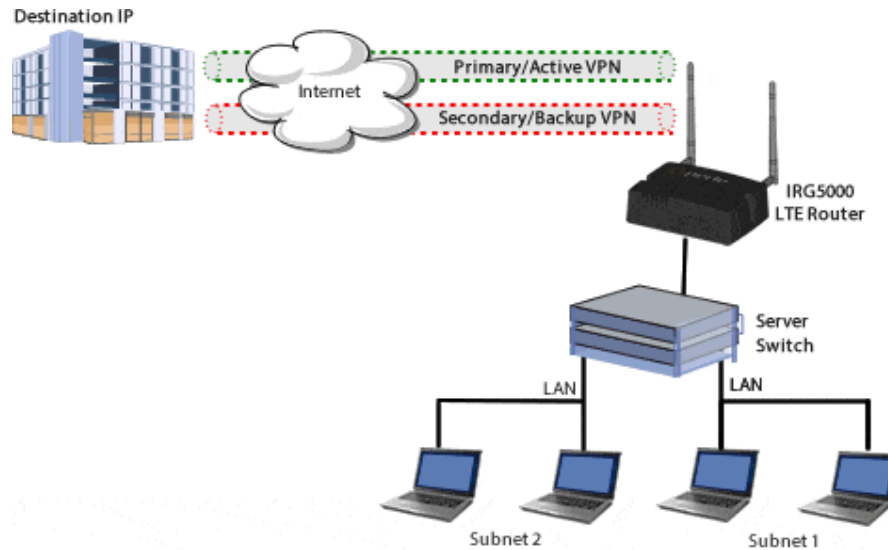
Failover with Static Routing

Force specified traffic to use different routing rules to direct specified traffic from the IRG5000 Router, or a connected device, to a designated primary router. If the primary route fails the specified traffic uses a backup route.



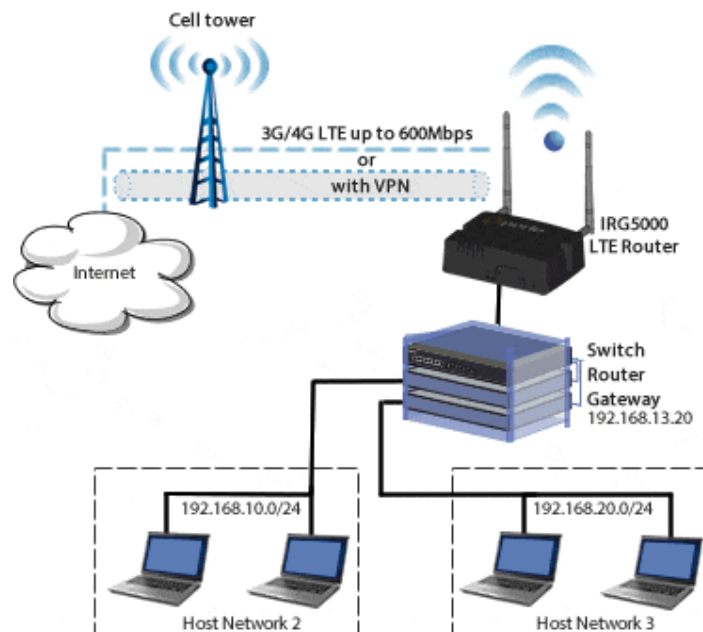
VPN Failover

With DPD and VPN Failover configured in the IRG5000 Router, two VPN tunnels are configured but only one is active at a time. If DPD detects that the destination is not responding through the Primary VPN, traffic is automatically switched to the Secondary/Backup VPN. The VPN Failover feature will continue to ping the destination through the primary tunnel and, if configured to do so, will automatically revert back to the primary once it is up again. Status fields can be viewed to see the current status of both VPNs.



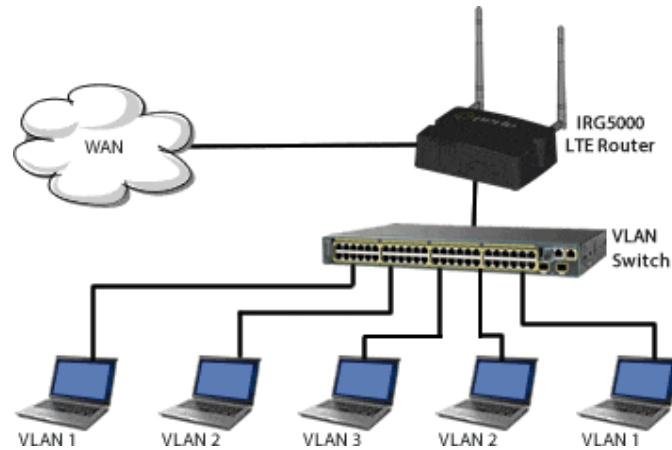
Non-NATed Networks

The Perle IRG5000 Cellular Router can handle multiple non-NATed networks behind a connected router or switch.



VLAN Support

The Perle IRG5000 Router supports up to 4000 VLANs on its Ethernet ports. VLANs are logical groupings of network devices that share the same broadcast domain. All devices on the same VLAN can ping each other without routing. There is no routing between VLANs.



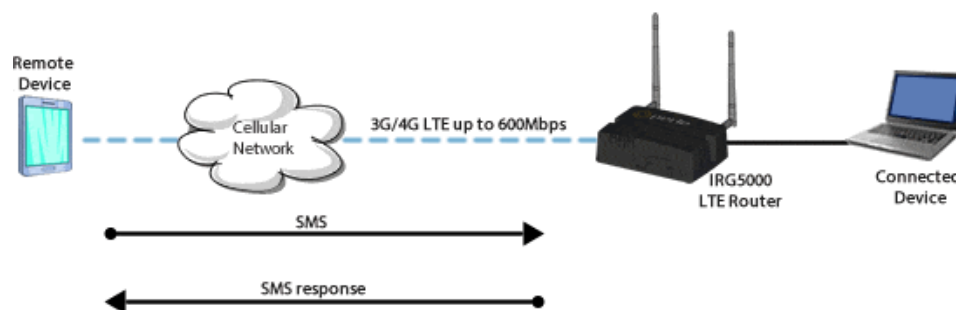
Port Forwarding

Any unsolicited data coming in on a defined Public Port is routed to the corresponding private port and IP of a host connected on the LAN.



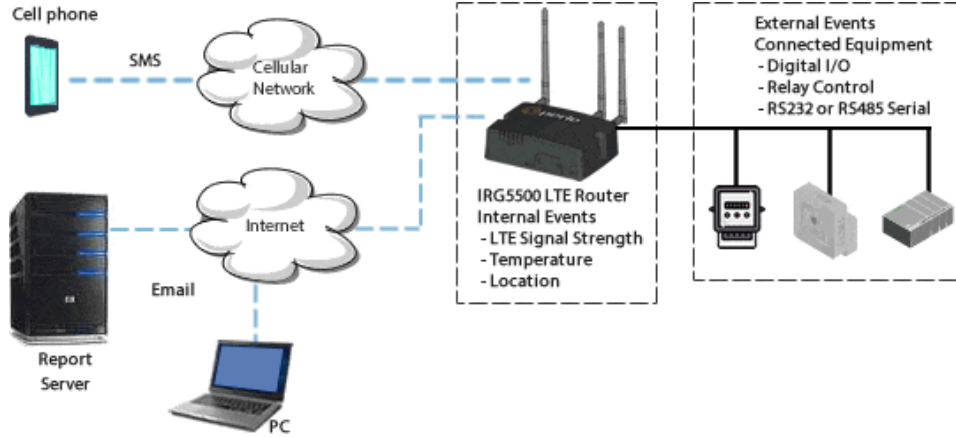
SMS support

The IRG5000 Router accepts SMS commands for basic actions and status. The IRG5000 Cellular Router will send back an acknowledgement that the SMS command was received every time.



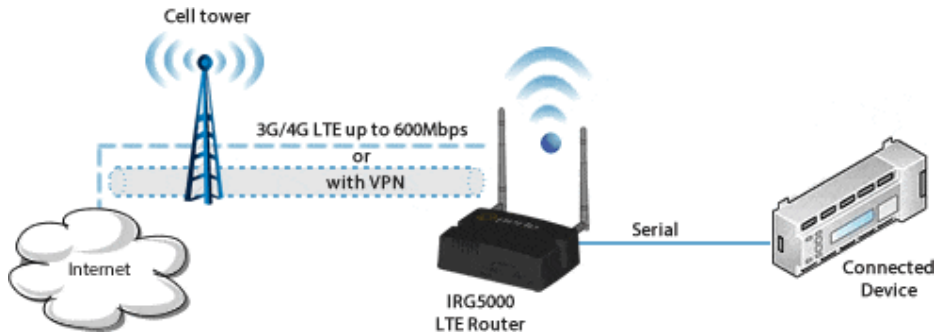
Event Reporting

The IRG5500 Router can be configured to generate reports, or initiate actions, based on specified events. These events can be generated internally, or externally by devices attached to the IRG5500 Serial RS232, RS485, or digital inputs.



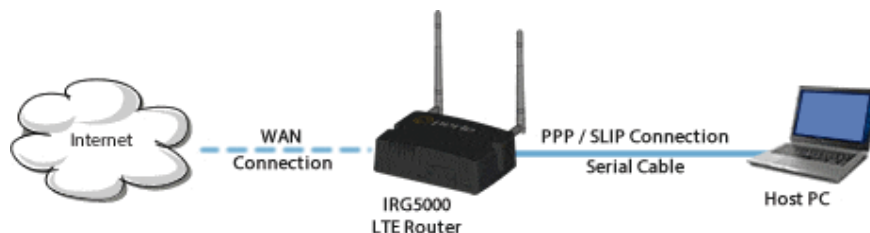
Serial Gateway

The Serial Port on the IRG5000 Router can be used to establish Serial to IP communications. Connect PLCs, RTUs, Card Readers, or any device with a serial COM port and transmit data over LTE.



PPP / SLIP / DUN Support

The Perle IRG5000 supports Point-to-Point (PPP) to establish a connection to a host PC serial port. The IRG5000 supports Windows Dial-up Networking when PPP is enabled to establish a connection to a host PC serial port.



Product List



IRG5521 LTE Router with integrated: LTE-A (CAT6 300M / 50M), GPS/GNSS, Wireless LAN (2.4/5 GHz), 2 x 10/100/1000 RJ45 Ethernet, USB-C Port, RS232, 3 x GPIO, IGN (ignition sense pin), Relay output, RS485 half-duplex, IP54 enclosure. Power supply included.

Power Cord & Part Number(s)

USA	UK	EU	AUS
08000074	08000071	08000072	08000076



IRG5521 LTE Router with integrated: LTE-A (CAT6 300M / 50M), GPS/GNSS, Wireless LAN (2.4/5 GHz), 2 x 10/100/1000 RJ45 Ethernet, USB-C Port, RS232, 3 x GPIO, IGN (ignition sense pin), Relay output, RS485 half-duplex, IP54 enclosure. GPIO Cable w/4 pin plug included.

Power Cord & Part Number(s)

DC
08000079



IRG5521 LTE Router with integrated: LTE-A (CAT6 300M / 50M), GPS/GNSS, Wireless LAN (2.4/5 GHz), 2 x 10/100/1000 RJ45 Ethernet, USB-C Port, RS232, 3 x GPIO, IGN (ignition sense pin), Relay output, RS485 half-duplex, IP54 enclosure. Power supply and LTE antennas included.

Power Cord & Part Number(s)

USA	UK	EU	AUS
08000294	08000291	08000292	08000296



IRG5521 LTE Router with integrated: LTE-A (CAT6 300M / 50M), GPS/GNSS, Wireless LAN (2.4/5 GHz), 2 x 10/100/1000 RJ45 Ethernet, USB-C Port, RS232, 3 x GPIO, IGN (ignition sense pin), Relay output, RS485 half-duplex, IP54 enclosure. GPIO Cable w/4 pin plug and LTE antennas included.

Power Cord & Part Number(s)

DC
08000299



IRG5521 LTE Router with integrated: LTE-A (CAT6 300M / 50M), GPS/GNSS, Wireless LAN (2.4/5 GHz), 2 x 10/100/1000 RJ45 Ethernet, USB-C Port, RS232, 3 x GPIO, IGN (ignition sense pin), Relay output, RS485 half-duplex, IP54 enclosure. Power supply and WLAN antennas included.

Power Cord & Part Number(s)

USA	UK	EU	AUS
08000374	08000371	08000372	08000376



IRG5521 LTE Router with integrated: LTE-A (CAT6 300M / 50M), GPS/GNSS, Wireless LAN (2.4/5 GHz), 2 x 10/100/1000 RJ45 Ethernet, USB-C Port, RS232, 3 x GPIO, IGN (ignition sense pin), Relay output, RS485 half-duplex, IP54 enclosure. GPIO Cable w/4 pin plug and WLAN antennas included.

Power Cord & Part Number(s)

DC

08000379



IRG5521 LTE Router with integrated: LTE-A (CAT6 300M / 50M), GPS/GNSS, Wireless LAN (2.4/5 GHz), 2 x 10/100/1000 RJ45 Ethernet, USB-C Port, RS232, 3 x GPIO, IGN (ignition sense pin), Relay output, RS485 half-duplex, IP54 enclosure. Power supply and LTE/WLAN antennas included.

Power Cord & Part Number(s)

USA	UK	EU	AUS
08000434	08000431	08000432	08000436



IRG5521 LTE Router with integrated: LTE-A (CAT6 300M / 50M), GPS/GNSS, Wireless LAN (2.4/5 GHz), 2 x 10/100/1000 RJ45 Ethernet, USB-C Port, RS232, 3 x GPIO, IGN (ignition sense pin), Relay output, RS485 half-duplex, IP54 enclosure. GPIO Cable w/4 pin plug and LTE/WLAN antennas included.

Power Cord & Part Number(s)

DC

08000439



IRG5541 LTE Router with integrated: LTE-A (CAT6 300M / 50M), GPS/GNSS, Wireless LAN (2.4/5 GHz), 4 x 10/100/1000 RJ45 Ethernet, USB-C Port, RS232, 3 x GPIO, IGN (ignition sense pin), Relay output, RS485 half-duplex, IP54 enclosure. Power supply included.

Power Cord & Part Number(s)

UK

08000091



IRG5521+ LTE Router with integrated: LTE-A PRO (CAT12 600M / 150M), GPS/GNSS, Wireless LAN (2.4/5 GHz), 2 x 10/100/1000 RJ45 Ethernet, USB-C Port, RS232, 3 x GPIO, IGN (ignition sense pin), Relay output, RS485 half-duplex, IP54 enclosure. Power supply included.

Power Cord & Part Number(s)

USA	UK	EU	AUS
08000084	08000081	08000082	08000086



IRG5521+ LTE Router with integrated: LTE-A PRO (CAT12 600M / 150M), GPS/GNSS, Wireless LAN (2.4/5 GHz), 2 x 10/100/1000 RJ45 Ethernet, USB-C Port, RS232, 3 x GPIO, IGN (ignition sense pin), Relay output, RS485 half-duplex, IP54 enclosure. GPIO Cable w/4 pin plug included.

Power Cord & Part Number(s)

DC

08000089



IRG5521+ LTE Router with integrated: LTE-A PRO (CAT12 600M / 150M), GPS/GNSS, Wireless LAN (2.4/5 GHz), 2 x 10/100/1000 RJ45 Ethernet, USB-C Port, RS232, 3 x GPIO, IGN (ignition sense pin), Relay output, RS485 half-duplex, IP54 enclosure. Power supply and LTE antennas included.

Power Cord & Part Number(s)

USA	UK	EU	AUS
08000304	08000301	08000302	08000306



IRG5521+ LTE Router with integrated: LTE-A PRO (CAT12 600M / 150M), GPS/GNSS, Wireless LAN (2.4/5 GHz), 2 x 10/100/1000 RJ45 Ethernet, USB-C Port, RS232, 3 x GPIO, IGN (ignition sense pin), Relay output, RS485 half-duplex, IP54 enclosure. GPIO Cable w/4 pin plug and LTE antennas included.

Power Cord & Part Number(s)

DC

08000309



IRG5521+ LTE Router with integrated: LTE-A PRO (CAT12 600M / 150M), GPS/GNSS, Wireless LAN (2.4/5 GHz), 2 x 10/100/1000 RJ45 Ethernet, USB-C Port, RS232, 3 x GPIO, IGN (ignition sense pin), Relay output, RS485 half-duplex, IP54 enclosure. Power supply and WLAN antennas included.

Power Cord & Part Number(s)

USA	UK	EU	AUS
08000384	08000381	08000382	08000386



IRG5521+ LTE Router with integrated: LTE-A PRO (CAT12 600M / 150M), GPS/GNSS, Wireless LAN (2.4/5 GHz), 2 x 10/100/1000 RJ45 Ethernet, USB-C Port, RS232, 3 x GPIO, IGN (ignition sense pin), Relay output, RS485 half-duplex, IP54 enclosure. GPIO Cable w/4 pin plug and WLAN antennas included.

Power Cord & Part Number(s)

DC

08000389



IRG5521+ LTE Router with integrated: LTE-A PRO (CAT12 600M / 150M), GPS/GNSS, Wireless LAN (2.4/5 GHz), 2 x 10/100/1000 RJ45 Ethernet, USB-C Port, RS232, 3 x GPIO, IGN (ignition sense pin), Relay output, RS485 half-duplex, IP54 enclosure. Power supply and LTE/WLAN antennas included.

Power Cord & Part Number(s)

USA	UK	EU	AUS
08000444	08000441	08000442	08000446



IRG5521+ LTE Router with integrated: LTE-A PRO (CAT12 600M / 150M), GPS/GNSS, Wireless LAN (2.4/5 GHz), 2 x 10/100/1000 RJ45 Ethernet, USB-C Port, RS232, 3 x GPIO, IGN (ignition sense pin), Relay output, RS485 half-duplex, IP54 enclosure. GPIO Cable w/4 pin plug and LTE/WLAN antennas included.

Power Cord & Part Number(s)

DC
08000449



IRG5521+ FN FirstNet Ready LTE Router with integrated: LTE-A PRO (CAT12 600M with B14 NA support), GPS/GNSS, Wireless LAN (2.4/5 GHz), 2 x 10/100/1000 RJ45 Ethernet, USB-C Port, RS232, 3 x GPIO, IGN (ignition sense pin), Relay output, 485 half-duplex, IP54 enclosure. Power supply included.

Power Cord & Part Number(s)

USA
08000204



IRG5521+ FN FirstNet Ready LTE Router with integrated: LTE-A PRO (CAT12 600M with B14 NA support), GPS/GNSS, Wireless LAN (2.4/5 GHz), 2 x 10/100/1000 RJ45 Ethernet, USB-C Port, RS232, 3 x GPIO, IGN (ignition sense pin), Relay output, 485 half-duplex, IP54 enclosure. GPIO Cable w/4 pin plug included.

Power Cord & Part Number(s)

DC
08000209



IRG5521+ FN FirstNet Ready LTE Router with integrated: LTE-A PRO (CAT12 600M with B14 NA support), GPS/GNSS, Wireless LAN (2.4/5 GHz), 2 x 10/100/1000 RJ45 Ethernet, USB-C Port, RS232, 3 x GPIO, IGN (ignition sense pin), Relay output, 485 half-duplex, IP54 enclosure. Power supply and LTE antennas included.

Power Cord & Part Number(s)

USA
08000354



IRG5521+ FN FirstNet Ready LTE Router with integrated: LTE-A PRO (CAT12 600M with B14 NA support), GPS/GNSS, Wireless LAN (2.4/5 GHz), 2 x 10/100/1000 RJ45 Ethernet, USB-C Port, RS232, 3 x GPIO, IGN (ignition sense pin), Relay output, 485 half-duplex, IP54 enclosure. GPIO Cable w/4 pin plug and LTE antennas included.

Power Cord & Part Number(s)

DC

08000359



IRG5521+ FN FirstNet Ready LTE Router with integrated: LTE-A PRO (CAT12 600M with B14 NA support), GPS/GNSS, Wireless LAN (2.4/5 GHz), 2 x 10/100/1000 RJ45 Ethernet, USB-C Port, RS232, 3 x GPIO, IGN (ignition sense pin), Relay output, 485 half-duplex, IP54 enclosure. Power supply and WLAN antennas included.

Power Cord & Part Number(s)

USA

08000414



IRG5521+ FN FirstNet Ready LTE Router with integrated: LTE-A PRO (CAT12 600M with B14 NA support), GPS/GNSS, Wireless LAN (2.4/5 GHz), 2 x 10/100/1000 RJ45 Ethernet, USB-C Port, RS232, 3 x GPIO, IGN (ignition sense pin), Relay output, 485 half-duplex, IP54 enclosure. GPIO Cable w/4 pin plug and WLAN antennas included.

Power Cord & Part Number(s)

DC

08000419



IRG5521+ FN FirstNet Ready LTE Router with integrated: LTE-A PRO (CAT12 600M with B14 NA support), GPS/GNSS, Wireless LAN (2.4/5 GHz), 2 x 10/100/1000 RJ45 Ethernet, USB-C Port, RS232, 3 x GPIO, IGN (ignition sense pin), Relay output, 485 half-duplex, IP54 enclosure. Power supply and LTE/WLAN antennas included.

Power Cord & Part Number(s)

USA

08000474



IRG5521+ FN FirstNet Ready LTE Router with integrated: LTE-A PRO (CAT12 600M with B14 NA support), GPS/GNSS, Wireless LAN (2.4/5 GHz), 2 x 10/100/1000 RJ45 Ethernet, USB-C Port, RS232, 3 x GPIO, IGN (ignition sense pin), Relay output, 485 half-duplex, IP54 enclosure. GPIO Cable w/4 pin plug and LTE/WLAN antennas included.

Power Cord & Part Number(s)

DC

08000479



IRG5541 LTE Router with integrated: LTE-A (CAT6 300M / 50M), GPS/GNSS, Wireless LAN (2.4/5 GHz), 4 x 10/100/1000 RJ45 Ethernet, USB-C Port, RS232, 3 x GPIO, IGN (ignition sense pin), Relay output, RS485 half-duplex, IP54 enclosure. Power supply included.

Power Cord & Part Number(s)

USA	EU	AUS
08000094	08000092	08000096



IRG5541 LTE Router with integrated: LTE-A (CAT6 300M / 50M), GPS/GNSS, Wireless LAN (2.4/5 GHz), 4 x 10/100/1000 RJ45 Ethernet, USB-C Port, RS232, 3 x GPIO, IGN (ignition sense pin), Relay output, RS485 half-duplex, IP54 enclosure. GPIO Cable w/4 pin plug included

Power Cord & Part Number(s)

DC
08000099



IRG5541 LTE Router with integrated: LTE-A (CAT6 300M / 50M), GPS/GNSS, Wireless LAN (2.4/5 GHz), 4 x 10/100/1000 RJ45 Ethernet, USB-C Port, RS232, 3 x GPIO, IGN (ignition sense pin), Relay output, RS485 half-duplex, IP54 enclosure. Power supply and LTE antennas included.

Power Cord & Part Number(s)

USA	UK	EU	AUS
08000314	08000311	08000312	08000316



IRG5541 LTE Router with integrated: LTE-A (CAT6 300M / 50M), GPS/GNSS, Wireless LAN (2.4/5 GHz), 4 x 10/100/1000 RJ45 Ethernet, USB-C Port, RS232, 3 x GPIO, IGN (ignition sense pin), Relay output, RS485 half-duplex, IP54 enclosure. GPIO Cable w/4 pin plug and LTE antennas included.

Power Cord & Part Number(s)

DC
08000319



IRG5541 LTE Router with integrated: LTE-A (CAT6 300M / 50M), GPS/GNSS, Wireless LAN (2.4/5 GHz), 4 x 10/100/1000 RJ45 Ethernet, USB-C Port, RS232, 3 x GPIO, IGN (ignition sense pin), Relay output, RS485 half-duplex, IP54 enclosure. Power supply and WLAN antennas included.

Power Cord & Part Number(s)

USA	UK	EU	AUS
08000394	08000391	08000392	08000396



IRG5541 LTE Router with integrated: LTE-A (CAT6 300M / 50M), GPS/GNSS, Wireless LAN (2.4/5 GHz), 4 x 10/100/1000 RJ45 Ethernet, USB-C Port, RS232, 3 x GPIO, IGN (ignition sense pin), Relay output, RS485 half-duplex, IP54 enclosure. GPIO Cable w/4 pin plug and WLAN antennas included.

Power Cord & Part Number(s)

DC

08000399



IRG5541 LTE Router with integrated: LTE-A (CAT6 300M / 50M), GPS/GNSS, Wireless LAN (2.4/5 GHz), 4 x 10/100/1000 RJ45 Ethernet, USB-C Port, RS232, 3 x GPIO, IGN (ignition sense pin), Relay output, RS485 half-duplex, IP54 enclosure. Power supply and LTE/WLAN antennas included.

Power Cord & Part Number(s)

USA	UK	EU	AUS
08000454	08000451	08000452	08000456



IRG5541 LTE Router with integrated: LTE-A (CAT6 300M / 50M), GPS/GNSS, Wireless LAN (2.4/5 GHz), 4 x 10/100/1000 RJ45 Ethernet, USB-C Port, RS232, 3 x GPIO, IGN (ignition sense pin), Relay output, RS485 half-duplex, IP54 enclosure. GPIO Cable w/4 pin plug and LTE/WLAN antennas included.

Power Cord & Part Number(s)

DC

08000459



IRG5541+ LTE Router with integrated: LTE-A PRO (CAT12 600M / 150M), GPS/GNSS, Wireless LAN (2.4/5 GHz), 4 x 10/100/1000 RJ45 Ethernet, USB-C Port, RS232, 3 x GPIO, IGN (ignition sense pin), Relay output, RS485 half-duplex, IP54 enclosure. Power supply included.

Power Cord & Part Number(s)

USA	UK	EU	AUS
08000104	08000101	08000102	08000106



IRG5541+ LTE Router with integrated: LTE-A PRO (CAT12 600M / 150M), GPS/GNSS, Wireless LAN (2.4/5 GHz), 4 x 10/100/1000 RJ45 Ethernet, USB-C Port, RS232, 3 x GPIO, IGN (ignition sense pin), Relay output, RS485 half-duplex, IP54 enclosure. GPIO Cable w/4 pin plug included.

Power Cord & Part Number(s)

DC

08000109



IRG5541+ LTE Router with integrated: LTE-A PRO (CAT12 600M / 150M), GPS/GNSS, Wireless LAN (2.4/5 GHz), 4 x 10/100/1000 RJ45 Ethernet, USB-C Port, RS232, 3 x GPIO, IGN (ignition sense pin), Relay output, RS485 half-duplex, IP54 enclosure. Power supply and LTE antennas included.

Power Cord & Part Number(s)

USA	UK	EU	AUS
08000324	08000321	08000322	08000326



IRG5541+ LTE Router with integrated: LTE-A PRO (CAT12 600M / 150M), GPS/GNSS, Wireless LAN (2.4/5 GHz), 4 x 10/100/1000 RJ45 Ethernet, USB-C Port, RS232, 3 x GPIO, IGN (ignition sense pin), Relay output, RS485 half-duplex, IP54 enclosure. GPIO Cable w/4 pin plug and LTE antennas included.

Power Cord & Part Number(s)

DC
08000329



IRG5541+ LTE Router with integrated: LTE-A PRO (CAT12 600M / 150M), GPS/GNSS, Wireless LAN (2.4/5 GHz), 4 x 10/100/1000 RJ45 Ethernet, USB-C Port, RS232, 3 x GPIO, IGN (ignition sense pin), Relay output, RS485 half-duplex, IP54 enclosure. Power supply and WLAN antennas included.

Power Cord & Part Number(s)

USA	UK	EU	AUS
08000404	08000401	08000402	08000406



IRG5541+ LTE Router with integrated: LTE-A PRO (CAT12 600M / 150M), GPS/GNSS, Wireless LAN (2.4/5 GHz), 4 x 10/100/1000 RJ45 Ethernet, USB-C Port, RS232, 3 x GPIO, IGN (ignition sense pin), Relay output, RS485 half-duplex, IP54 enclosure. GPIO Cable w/4 pin plug and WLAN antennas included.

Power Cord & Part Number(s)

DC
08000409



IRG5541+ LTE Router with integrated: LTE-A PRO (CAT12 600M / 150M), GPS/GNSS, Wireless LAN (2.4/5 GHz), 4 x 10/100/1000 RJ45 Ethernet, USB-C Port, RS232, 3 x GPIO, IGN (ignition sense pin), Relay output, RS485 half-duplex, IP54 enclosure. Power supply and LTE/WLAN antennas included.

Power Cord & Part Number(s)

USA	UK	EU	AUS
08000464	08000461	08000462	08000466



IRG5541+ LTE Router with integrated: LTE-A PRO (CAT12 600M / 150M), GPS/GNSS, Wireless LAN (2.4/5 GHz), 4 x 10/100/1000 RJ45 Ethernet, USB-C Port, RS232, 3 x GPIO, IGN (ignition sense pin), Relay output, RS485 half-duplex, IP54 enclosure. GPIO Cable w/4 pin plug and LTE/WLAN antennas included.

Power Cord & Part Number(s)

DC

08000469



IRG5541+ FN FirstNet Ready LTE Router with integrated: LTE-A PRO (CAT12 600M with B14 NA support), GPS/GNSS, Wireless LAN (2.4/5 GHz), 4 x 10/100/1000 RJ45 Ethernet, USB-C Port, RS232, 3 x GPIO, IGN (ignition sense pin), Relay output, 485 half-duplex, IP54 enclosure. Power supply included.

Power Cord & Part Number(s)

USA

08000214



IRG5541+ FN FirstNet Ready LTE Router with integrated: LTE-A PRO (CAT12 600M with B14 NA support), GPS/GNSS, Wireless LAN (2.4/5 GHz), 4 x 10/100/1000 RJ45 Ethernet, USB-C Port, RS232, 3 x GPIO, IGN (ignition sense pin), Relay output, 485 half-duplex, IP54 enclosure. GPIO Cable w/4 pin plug included.

Power Cord & Part Number(s)

DC

08000219



IRG5541+ FN FirstNet Ready LTE Router with integrated: LTE-A PRO (CAT12 600M with B14 NA support), GPS/GNSS, Wireless LAN (2.4/5 GHz), 4 x 10/100/1000 RJ45 Ethernet, USB-C Port, RS232, 3 x GPIO, IGN (ignition sense pin), Relay output, 485 half-duplex, IP54 enclosure. Power supply and LTE antennas included.

Power Cord & Part Number(s)

USA

08000364



IRG5541+ FN FirstNet Ready LTE Router with integrated: LTE-A PRO (CAT12 600M with B14 NA support), GPS/GNSS, Wireless LAN (2.4/5 GHz), 4 x 10/100/1000 RJ45 Ethernet, USB-C Port, RS232, 3 x GPIO, IGN (ignition sense pin), Relay output, 485 half-duplex, IP54 enclosure. GPIO Cable w/4 pin plug and LTE antennas included.

Power Cord & Part Number(s)

DC

08000369



IRG5541+ FN FirstNet Ready LTE Router with integrated: LTE-A PRO (CAT12 600M with B14 NA support), GPS/GNSS, Wireless LAN (2.4/5 GHz), 4 x 10/100/1000 RJ45 Ethernet, USB-C Port, RS232, 3 x GPIO, IGN (ignition sense pin), Relay output, 485 half-duplex, IP54 enclosure. Power supply and WLAN antennas included.

Power Cord & Part Number(s)

USA

08000424



IRG5541+ FN FirstNet Ready LTE Router with integrated: LTE-A PRO (CAT12 600M with B14 NA support), GPS/GNSS, Wireless LAN (2.4/5 GHz), 4 x 10/100/1000 RJ45 Ethernet, USB-C Port, RS232, 3 x GPIO, IGN (ignition sense pin), Relay output, 485 half-duplex, IP54 enclosure. GPIO Cable w/4 pin plug and WLAN antennas included.

Power Cord & Part Number(s)

DC

08000429



IRG5541+ FN FirstNet Ready LTE Router with integrated: LTE-A PRO (CAT12 600M with B14 NA support), GPS/GNSS, Wireless LAN (2.4/5 GHz), 4 x 10/100/1000 RJ45 Ethernet, USB-C Port, RS232, 3 x GPIO, IGN (ignition sense pin), Relay output, 485 half-duplex, IP54 enclosure. Power supply and LTE/WLAN antennas included.

Power Cord & Part Number(s)

USA

08000484



IRG5541+ FN FirstNet Ready LTE Router with integrated: LTE-A PRO (CAT12 600M with B14 NA support), GPS/GNSS, Wireless LAN (2.4/5 GHz), 4 x 10/100/1000 RJ45 Ethernet, USB-C Port, RS232, 3 x GPIO, IGN (ignition sense pin), Relay output, 485 half-duplex, IP54 enclosure. GPIO Cable w/4 pin plug and LTE/WLAN antennas included.

Power Cord & Part Number(s)

DC

08000489

Related Accessories



Panel Mount Kit PM3 - Brackets for wall or panel mounting 30 to 45mm wide Perle IDS Industrial Switches and IRG5000 LTE Routers.

Model

Panel Mount Kit PM3

Part Number

07010290



Universal DIN Rail Router Mount. The router can be attached either on the side or flat on the bottom.

Model

UNIV DIN Rail Router Mount

Part Number
08000110


2 x LTE Antenna with SMA direct attach connector for IRG5000 router product line.

Model

LTE Antenna SMA Pack

Part Number
08000120


1 x GPS/GNSS (GPS, Galileo, Glonass, Beidou) Passive Antenna with 5m / 16ft cable SMA connector for IRG5000 router product line

Model

GNSS PASV Antenna SMA/CA

Part Number
08000130


2 x Wi-Fi Antenna with RP-SMA direct attach connector for IRG5000 router product line.

Model

WiFi Antenna RP-SMA Pack

Part Number
08000140


1 x PSU 12 VDC / 2 A with 4 pin Molex connector, 1.8m / 6ft cable and NA wall plug for IRG5500 & IRG5400 router product lines.

Model

Power Adapter 12VDC/2A 4pin NA

Part Number
08000150


1 x PSU 12 VDC / 2 A with 4 pin Molex connector, 1.8m / 6ft cable and Euro wall plug for IRG5500 & IRG5400 router product lines.

Model

Power Adapter 12VDC/2A 4pin EU

Part Number
08000160



1 x PSU 12 VDC / 2 A with 4 pin Molex connector, 1.8m / 6ft cable and UK wall plug for IRG5500 & IRG5400 router product lines.

Model

Power Adapter 12VDC/2A 4pin UK

Part Number

08000170



1 x PSU 12 VDC / 2 A with 4 pin Molex connector, 1.8m / 6ft cable and AUS wall plug for IRG5500 & IRG5400 router product lines.

Model

Power Adapter 12VDC/2A 4pin AUS

Part Number

08000180



1 x pigtail cable with 4 pin Molex connector, 3m / 10ft for IRG5500 & IRG5400 router product lines for GPIO and DC power

Model

GPIO Cable w/4 pin plug

Part Number

2500468



1 x pigtail cable with 8 pin Molex connector, 3m / 10ft for IRG5500 LTE Routers

Model

GPIO Cable w/8 pin plug

Part Number

2500476