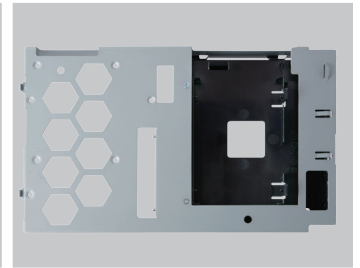
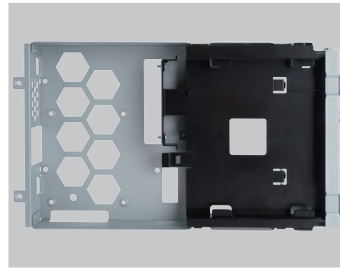
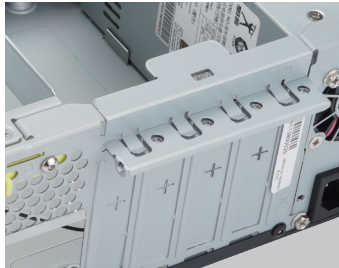


CJ SERIES mATX CHASSIS

8L SMALL FORM FACTOR



*Optional

Features

Superior Performance

The CJ Series is just 8L in volume, but it accommodates a slim ODD, 3.5"/2.5" HDD, 2.5" HDD, four low-profile PCI cards, and even one card reader! It offers exceptional flexibility and scalability for enhanced multi function applications!

Highly Expandable

Supports USB 3.0, USB 2.0, Type-C and card reader ports at the front for multiple device connections.

Detachable Drive Cage

The removable drive cage features three tool-free bays for easy installation.

Quick Top Cover Eject Clip

A switch releases the top cover for faster system assembly or maintenance.

Tool-Free

Screw-less designs – ODD/HDD bays and PCI-E slots for easy assembly.

Advanced Thermal Solution

Hosts an 80mm PWM fan with plenty of ventilation providing exceptional cooling performance.

Supports Micro-ATX Motherboard

Standard Flex ATX 265W Power Supply

CJ SERIES mATX CHASSIS

8L SMALL FORM FACTOR



CJ708 ■



CJ712 ■

Specifications

Case Size	S.F.F. Slim Chassis (Ultra Small Form Factor)
External Drive Bays	Slim ODD x 1
Internal Drive Bays	3.5" or 2.5" HDD x 1, 2.5" HDD x 1
Front Ports	USB 3.0 x 2 or USB 3.0 x 2 + USB 2.0 x 2, HD Audio
Dimensions (H x W x D) with Front Panel	305 x 95 x 276 mm (8L) / 12" x 3.7" x 10.9" 307 x 95 x 290 mm / 12.1" x 3.7" x 11.4" (with Foot Stand, Clip)
Dimensions (HxWxD) w/o Front Panel	305 x 95 x 266 mm (7.7L) 12" x 3.7" x 10.5"
MB Form Factor	Micro-ATX
I/O Expansion Slots	Low Profile Card Slot x 4
Power Supply	Standard Flex ATX 12V, 265W
Thermal Solution	Front: 80x80x15mm PWM Fan (Up to 20mm Thickness)
Safety	Meets RoHS, CE and FCC Class B Requirements
Security	Padlock Loop / Kensington Slot
Optional	• USB 2.0 x 2 • Type-C x 1 • Card Reader x 1 • Internal Speaker • Chassis Intrusion Switch

* The actual product is subject to change without prior notice. In Win Development Inc. reserves the right to make final modifications.