

HP EliteDesk 800 G5 Desktop Mini PC



The ultra-powerful enterprise-class Mini is now more nimble than ever

Experience performance, expandability, security, and manageability tailored for the modern workplace with the compact HP EliteDesk 800 Desktop Mini. It's available in processor configurations to suit your business and budget and built to pair seamlessly with the HP Mini-in-One 24 Display.³



HP recommends Windows 10 Pro for business

- Windows 10 Pro¹
- HP Sure Start Gen5²

Meet the mighty Mini

- Tackle demanding challenges with up to a 95W 9th generation Intel® processor⁴, optional Intel® Optane™ Memory H10 with Solid State Storage⁵, optional Wi-Fi 6 (802.11ax)^{6,7}, and up to 64 GB memory.⁷ Explore every detail on up to 7 displays.⁸

Build a universe around your Mini

- Install your Mini securely inside an HP Mini-in-One 24 Display³ or attach behind an HP EliteDisplay⁹—and power through USB-C™¹⁰. Mount¹¹ with space-saving HP accessories.⁷ Streamline cabling with USB-C™ or optional HP Power Supply Holder.⁷

Enhanced data and device security

- Get a highly secure PC reinforced by the full HP security suite. Integrate into the most secure network infrastructures with an optional fiber network adapter.⁷ Store and lock your Mini and power cord in the optional HP Lock Box.⁷
- Be productive in any situation with Windows 10 Pro and powerful security, collaboration, and connectivity features from HP.¹
- Expand with your business with optional ports for legacy and evolving connectivity. Speed up networking with an optional 100 Mbps/sec or 1 Gbps/sec fiber network card.^{7,12}
- Customize your Mini solution with a range of exclusive accessories designed to simplify display, wall, and rack mounting of your PC and its power supply.⁷
- Firmware attacks can completely devastate your PC. Stay protected with HP Sure Start Gen5 self-healing BIOS.²
- Advanced malware can seriously disrupt your business. HP Sure Recover Gen2 ensures fast, secure, and automated recovery with only a network connection.¹³
- To get control of your PC, attackers first need to take down its defenses. Keep critical security protections up and running with HP Sure Run Gen2.¹⁴
- Help protect your PC from websites and attachments with malware, ransomware or viruses with hardware-enforced security from HP Sure Click.¹⁵
- HP Sure Sense uses the power of deep learning AI to identify and quarantine never-before-seen attacks, helping prevent infections before they happen.¹⁶
- The HP Manageability Integration Kit helps speed up image creation and management of hardware, BIOS, and security through Microsoft System Center Configuration Manager.¹⁷
- Simplify securing your PC. HP Client Security Manager offers a single interface to set up and manage your PC's powerful security features.¹⁸
- Rest easy with a PC that goes the distance, is designed to pass 120,000 hours of HP Total Test Process, and undergoes MIL-STD 810G testing.^{19,20}

HP EliteDesk 800 G5 Desktop Mini PC Specifications Table

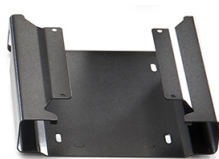


Available Operating Systems	Windows 10 Pro 64 – HP recommends Windows 10 Pro for business ¹ Windows 10 Pro 64 (National Academic only) ² Windows 10 Home 64 ¹ Windows 10 Home Single Language 64 ¹ FreeDOS
Processor family ¹⁷	8th Generation Intel® Core™ i3 processor (i3-8100, i3-8100T); 8th Generation Intel® Core™ i5 processor (i5-8500, i5-8500T); 8th Generation Intel® Core™ i7 processor (i7-8700, i7-8700T); 9th Generation Intel® Core™ i3 processor (i3-9100, i3-9100T, i3-9300, i3-9300T); 9th Generation Intel® Core™ i5 processor (i5-9500, i5-9500T); 9th Generation Intel® Core™ i7 processor (i7-9700, i7-9700K, i7-9700T); 9th Generation Intel® Core™ i9 processor (i9-9900, i9-9900K, i9-9900T); Intel® Celeron® processor (G4930, G4930T are Windows 10 only); Intel® Pentium® processor (G5420, G5600, G5600T, G5620 are Windows 10 only)
Available Processors ^{3,6,33,34,41,43}	Intel® Celeron® G4930 with Intel® UHD Graphics 610 (3.2 GHz base frequency, 2 MB cache, 2 cores); Intel® Celeron® G4930T with Intel® UHD Graphics 610 (3 GHz base frequency, 2 MB cache, 2 cores); Intel® Core™ i3-8100 with Intel® UHD Graphics 630 (3.6 GHz base frequency, 6 MB cache, 4 cores); Intel® Core™ i3-8100T with Intel® UHD Graphics 630 (3.1 GHz base frequency, 6 MB cache, 4 cores); Intel® Core™ i3-9100 with Intel® UHD Graphics 630 (3.6 GHz base frequency, up to 4.2 GHz with Intel® Turbo Boost Technology, 6 MB cache, 4 cores); Intel® Core™ i3-9100T with Intel® UHD Graphics 630 (3.1 GHz base frequency, up to 3.7 GHz with Intel® Turbo Boost Technology, 6 MB cache, 4 cores); Intel® Core™ i3-9300 with Intel® UHD Graphics 630 (3.7 GHz base frequency, up to 4.3 GHz with Intel® Turbo Boost Technology, 8 MB cache, 4 cores); Intel® Core™ i3-9300T with Intel® UHD Graphics 630 (3.2 GHz base frequency, up to 3.8 GHz with Intel® Turbo Boost Technology, 8 MB cache, 4 cores); Intel® Core™ i5-8500 with Intel® UHD Graphics 630 (3 GHz base frequency, up to 4.1 GHz with Intel® Turbo Boost Technology, 9 MB cache, 6 cores) supports Intel® vPro™ Technology; Intel® Core™ i5-8500T with Intel® UHD Graphics 630 (2.1 GHz base frequency, up to 3.5 GHz with Intel® Turbo Boost Technology, 9 MB cache, 6 cores) supports Intel® vPro™ Technology; Intel® Core™ i5-9500T with Intel® UHD Graphics 630 (2.2 GHz base frequency, up to 3.7 GHz with Intel® Turbo Boost Technology, 9 MB cache, 6 cores) supports Intel® vPro™ Technology; Intel® Core™ i7-8700 with Intel® UHD Graphics 630 (3.2 GHz base frequency, up to 4.6 GHz with Intel® Turbo Boost Technology, 12 MB cache, 6 cores) supports Intel® vPro™ Technology; Intel® Core™ i7-8700T with Intel® UHD Graphics 630 (2.4 GHz base frequency, up to 4 GHz with Intel® Turbo Boost Technology, 12 MB cache, 6 cores) supports Intel® vPro™ Technology; Intel® Core™ i7-9700K with Intel® UHD Graphics 630 (3.6 GHz base frequency, up to 4.9 GHz with Intel® Turbo Boost Technology, 12 MB cache, 8 cores) supports Intel® vPro™ Technology; Intel® Core™ i7-9700T with Intel® UHD Graphics 630 (2 GHz base frequency, up to 4.3 GHz with Intel® Turbo Boost Technology, 12 MB cache, 8 cores) supports Intel® vPro™ Technology; Intel® Core™ i9-9900 with Intel® UHD Graphics 630 (3.1 GHz base frequency, up to 5 GHz with Intel® Turbo Boost Technology, 16 MB cache, 8 cores) supports Intel® vPro™ Technology; Intel® Core™ i9-9900K with Intel® UHD Graphics 630 (3.6 GHz base frequency, up to 5 GHz with Intel® Turbo Boost Technology, 16 MB cache, 8 cores) supports Intel® vPro™ Technology; Intel® Core™ i9-9900T with Intel® UHD Graphics 630 (2.1 GHz base frequency, up to 4.4 GHz with Intel® Turbo Boost Technology, 16 MB cache, 8 cores) supports Intel® vPro™ Technology; Intel® Pentium® Gold G5420 with Intel® UHD Graphics 610 (3.8 GHz base frequency, 4 MB cache, 2 cores); Intel® Pentium® Gold G5420T with Intel® UHD Graphics 610 (3.2 GHz base frequency, 4 MB cache, 2 cores); Intel® Pentium® Gold G5600 with Intel® UHD Graphics 630 (3.9 GHz base frequency, 4 MB cache, 2 cores); Intel® Pentium® Gold G5600T with Intel® UHD Graphics 630 (3.3 GHz base frequency, 4 MB cache, 2 cores); Intel® Pentium® Gold G5620 with Intel® UHD Graphics 630 (4 GHz base frequency, 4 MB cache, 2 cores); Intel® Core™ i5-9500 with Intel® UHD Graphics 630 (3 GHz base frequency, up to 4.4 GHz with Intel® Turbo Boost Technology, 9 MB cache, 6 cores) supports Intel® vPro™ Technology; Intel® Core™ i7-9700 with Intel® UHD Graphics 630 (3 GHz base frequency, up to 4.7 GHz with Intel® Turbo Boost Technology, 12 MB L3 cache, 8 cores) supports Intel® vPro™ Technology
Chipset ⁴¹	Intel® Q370 (vPro); Intel® Q370 (non-vPro)
Form factor	Mini
Maximum memory	64 GB DDR4-2666 SDRAM ^{4,13} Transfer rates up to 2666 MT/s.
Memory slots	2 SODIMM
Internal storage	500 GB up to 2 TB 7200 rpm SATA ^{5,24,36} up to 2 TB 5400 rpm SATA ^{5,24,36} up to 500 GB SATA SED Opal 2 HDD ^{5,36} up to 500 GB 7200 rpm SATA FIPS SED ^{5,24,36} 256 GB up to 512 GB SATA SED Opal 2 TLC SSD ^{5,36} 256 GB up to 512 GB SATA FIPS SSD ^{5,36} 128 GB up to 512 GB PCIe® NVMe™ M.2 SSD ⁵ 128 GB up to 2 TB PCIe® NVMe™ TLC M.2 SSD ⁵ 256 GB up to 512 GB PCIe® NVMe™ SED Opal 2 TLC M.2 SSD ⁵ 256 GB up to 512 GB SATA TLC SSD ^{5,36} up to 512 GB Intel® Optane™ Memory H10 with Solid State Storage ^{5,9}
Storage acceleration	16 GB NVMe™ Intel® Optane™ Memory for storage acceleration ⁹
Available Graphics	Integrated: Intel® UHD Graphics 630; Intel® UHD Graphics 610 Discrete: AMD Radeon™ RX 560X Graphics (4 GB GDDR5 dedicated) ^{35,44}
Audio	Conexant CX20632 codec, universal audio jack, headset and headphone front ports (3.5 mm), multi-streaming capable
Expansion slots	1 M.2 2230; 2 M.2 2230/2280 (1 M.2 slot for WLAN and 2 M.2 2230/2280 slot for storage.)
Ports and Connectors	Rear: 1 external antenna connector; 1 power connector; 1 RJ-45; 2 DisplayPort™ 1.2; 2 USB 3.1 Gen 1; 2 USB 3.1 Gen 2 Front: 1 headphone; 1 headset connector; 1 USB 3.1 Gen 1 (charging); 1 USB 3.1 Gen 2; 1 USB 3.1 Type-C™ Gen 2 Optional: 1 DisplayPort™ 1.2; 1 serial; 1 VGA; 1 USB 3.1 Type-C™ Gen 2 (with Thunderbolt™); 1 HDMI 2.0; 1 USB 3.1 Type-C™ Gen 1 (DisplayPort™); 1 USB 3.1 Type-C™ Gen 1 (100W Power Delivery, DisplayPort™); 1 HP Fiber NIC Port Flex IO ^{32,37,38,39}
Input devices	HP Conferencing Keyboard; HP USB Business Slim Keyboard; HP USB Keyboard; HP Wireless Business Slim Keyboard and Mouse Combo; HP Wireless Collaboration Keyboard; HP USB Business Slim Antimicrobial Keyboard ^{8,14} ; HP USB 1000 dpi Laser Mouse; HP USB Antimicrobial Mouse; HP USB Hardened Mouse; HP USB Optical Mouse; HP USB Premium Mouse ⁸
Communications	LAN: Integrated Intel® I219LM GbE LOM WLAN: Intel® Dual Band Wi-Fi 5 9560 (2x2) and Bluetooth® 5 M.2 PCIe®, non-vPro™; Intel® Dual Band Wi-Fi 5 9560 (2x2) and Bluetooth® 5 M.2 PCIe®, vPro™; Intel® Wi-Fi 6 AX200 (2x2) and Bluetooth® M.2 Combo Card non-vPro™; Intel® Wi-Fi 6 AX200 (2x2) and Bluetooth® M.2 Combo Card vPro™; Realtek RTL8822BE-CG 802.11a/b/g/n/ac (2x2) with Bluetooth® 4.2 M.2 PCIe® ^{7,40,41} ;
Drive Bays	One 2.5" HDD ^{27,36}
Environmental	Operating temperature: 10 to 35°C; Operating humidity: 10 to 90% RH
Available Software	Absolute Persistence module; Buy Office (sold separately); HP Hotkey Support; HP JumpStarts; HP Noise Cancellation Software; HP Support Assistant; HP Wake on WLAN ^{18,20}
Security management	Cover removal sensor; HP BIOSphere Gen5; HP Client Security Suite Gen 5; HP DriveLock and Automatic DriveLock; HP Secure Erase; HP Sure Click; HP Sure Recover Gen2; HP Sure Run Gen2; HP Sure Sense; HP Sure Start Gen5; Intel® Identity Protection Technology (Intel® IPT); Power-on password (via BIOS); RAID configurations; SATA port disablement (via BIOS); Setup password (via BIOS); Support for chassis padlocks and cable lock devices; TPM 2.0 (Firmware: 7.85) endpoint security controller (Infineon SLB9670) shipped with Windows 10. Common Criteria EAL4+ Certified. FIPS 140-2 Level 2 Certified; USB enable/disable and boot control (via BIOS) ^{11,19,21,22,25,26,28,29,30,31}
Management features	HP BIOS Config Utility (download); HP Client Catalog (download); HP Cloud Recovery; HP Driver Packs (download); HP Management Integration Kit for Microsoft System Center Configuration Management Gen 3; HP System Software Manager (download) ^{10,23,42}
Power	65 W external power adapter, up to 89% efficiency; 90 W external power adapter, up to 89% efficiency; 150 W external power adapter, up to 89% efficiency, active PFC ¹⁶
Dimensions	17.7 x 17.5 x 3.4 cm
Weight	0.96 kg (Exact weight depends on configuration.)
Energy efficiency compliance	ENERGY STAR® certified; EPEAT® 2019 registered where applicable ¹²
Environmental specifications	Low halogen ¹⁵

HP EliteDesk 800 G5 Desktop Mini PC

Accessories and services (not included)

HP Desktop Mini Security/Dual VESA Sleeve v2



Wrap your HP Desktop Mini PC in the HP Desktop Mini Security/Dual VESA Sleeve v2 to securely mount it—with or without an Expansion Module¹—behind your display, position the solution on a wall, and lock it down with the integrated security bracket and optional HP Ultra-Slim Cable Lock. Proven performance and reliability to deliver maximum investment protection. Offering the perfect combination of performance, reliability and investment protection to any IT environment. For businesses that require superior stability and manageability with low lifecycle costs, or desktops with proven technology, superior price/performance and a wide choice of features, or even entry-level PCs that balance price and essential computing capabilities – the HP Desktop family holds the solution.

Product number: 2JA32AA

HP 16GB DDR4-2666 SODIMM



Boost the capabilities of your HP Business Desktop PC and improve system performance and application responsiveness with low-power, high-speed DDR4 memory from HP. Proven performance and reliability to deliver maximum investment protection. Offering the perfect combination of performance, reliability and investment protection to any IT environment. For businesses that require superior stability and manageability with low lifecycle costs, or desktops with proven technology, superior price/performance and a wide choice of features, or even entry-level PCs that balance price and essential computing capabilities – the HP Desktop family holds the solution.

Product number: 3TK84AA

HP Quick Release Bracket 2



Use the HP Quick Release Bracket 2 to attach your HP Desktop Mini to an HP display¹ and a variety of stands, arms or wall mounts.² The failsafe "Sure-Lock" mechanism snaps the PC securely in place, and can be further secured with a theft-deterrent security screw. Proven performance and reliability to deliver maximum investment protection. Offering the perfect combination of performance, reliability and investment protection to any IT environment. For businesses that require superior stability and manageability with low lifecycle costs, or desktops with proven technology, superior price/performance and a wide choice of features, or even entry-level PCs that balance price and essential computing capabilities – the HP Desktop family holds the solution.

Product number: 6KD15AA

HP Wireless Slim Business Keyboard



Enjoy easy data entry and wireless connectivity with the HP Wireless Business Slim Keyboard, designed to complement the 2015 class of HP Business PCs. Proven performance and reliability to deliver maximum investment protection. Offering the perfect combination of performance, reliability and investment protection to any IT environment. For businesses that require superior stability and manageability with low lifecycle costs, or desktops with proven technology, superior price/performance and a wide choice of features, or even entry-level PCs that balance price and essential computing capabilities – the HP Desktop family holds the solution.

Product number: N3R88AA

HP 3-year Next Business Day Onsite Optional Customer Self Repair Desktop/Workstation Only Hardware Service



HP Care Pack

Receive 3 years of next business day onsite repair from an HP-qualified technician for your computing device, if the issue cannot be solved remotely. For more information on Care Pack services, please visit www.hp.com/go/cpc.

Product number: UE379E

HP EliteDesk 800 G5 Desktop Mini PC

Messaging Footnotes

- ¹ Not all features are available in all editions or versions of Windows. Systems may require upgraded and/or separately purchased hardware, drivers, software or BIOS update to take full advantage of Windows functionality. Windows 10 is automatically updated, which is always enabled. ISP fees may apply and additional requirements may apply over time for updates. See <http://www.windows.com>.
- ² HP Sure Start Gen5 is available on select HP PCs with Intel processors. See product specifications for availability.
- ³ HP Mini-in-One 24 Display sold separately. Only compatible with 35W and 65W configurations. PC must be configured with optional USB-C™ with 100W Power Delivery card.
- ⁴ Multi-Core is designed to improve performance of certain software products. Not all customers or software applications will necessarily benefit from use of this technology. Performance and clock frequency will vary depending on application workload and your hardware and software configurations. Intel's numbering, branding and/or naming is not a measurement of higher performance.
- ⁵ Intel® Optane™ memory is sold separately. Intel® Optane™ memory system acceleration does not replace or increase the DRAM in your system. Available for HP commercial desktops and notebooks and for select HP workstations (HP Z240 Tower/SFF, Z2 Mini, and ZBook Studio 15 and 17 G5) and requires a SATA HDD, 7th Gen or higher Intel® Core™ processor or Intel® Xeon® processor E3-1200 V6 product family or higher, BIOS version with Intel® Optane™ supported, Windows 10 version 1703 or higher, M.2 type 2280-S1-B-M connector on a PCH Remapped PCIe Controller and Lanes in an x2 or x4 configuration with B-M keys that meet NVMe™ Spec 1.1, and an Intel® Rapid Storage Technology (Intel® RST) 15.5 driver.
- ⁶ Wireless access point and Internet service required and sold separately. Availability of public wireless access points limited. Wi-Fi 6 is backwards compatible with prior 802.11ax specs. The specifications for Wi-Fi 6 (802.11ax) are draft and are not final. If the final specifications differ from the draft specifications, it may affect the ability of the PC to communicate with other 802.11ax devices.
- ⁷ Sold separately or as a configurable option.
- ⁸ Daisy chaining of 7 displays is only supported on 35W processor model configured with an optional AMD Radeon™ RX560 graphics card. A PC configured with the AMD Radeon™ RX560 cannot be configured with any other optional I/O.
- ⁹ Display sold separately. See display data sheet on hp.com for mounting bracket guidance.
- ¹⁰ Select HP EliteDisplays support USB-C™ Power Delivery. See display data sheet on hp.com for guidance. PC must be configured with optional USB-C™ with 100W Power Delivery card, which is only available on 35W and 65W configurations.
- ¹¹ Mounting hardware sold separately.
- ¹² Sold separately as a configurable option and only available on 35W and 65W configurations.
- ¹³ See product specifications for availability. Requires an open, wired network connection. Not available on platforms with multiple internal storage drives. You must back up important files, data, photos, videos, etc. before using HP Sure Recover to avoid loss of data. HP Sure Recover (Gen1) does not support platforms with Intel® Optane™.
- ¹⁴ See product specifications for availability.
- ¹⁵ HP Sure Click is available on select HP platforms and supports Microsoft Internet Explorer, Google Chrome™, and Chromium™. Supported attachments include Microsoft Office (Word, Excel, PowerPoint) and PDF files in read-only mode, when Microsoft Office or Adobe Acrobat are installed.
- ¹⁶ HP Sure Sense requires Windows 10. See product specifications for availability.
- ¹⁷ HP Manageability Integration Kit can be downloaded from <http://www.hp.com/go/clientmanagement>.
- ¹⁸ HP Client Security Manager Gen5 requires Windows and is available on select HP Pro and Elite PCs. See product specifications for details.
- ¹⁹ HP Total Test Process testing is not a guarantee of future performance under these test conditions. Accidental damage requires an optional HP Accidental Damage Protection Care Pack.
- ²⁰ MIL-STD testing is not intended to demonstrate fitness for U.S. Department of Defense contract requirements or for military use. Test results are not a guarantee of future performance under these test conditions. Accidental damage requires an optional HP Accidental Damage Protection Care Pack.

Technical Specifications Footnotes

- ¹ Not all features are available in all editions or versions of Windows. Systems may require upgraded and/or separately purchased hardware, drivers, software or BIOS update to take full advantage of Windows functionality. Windows 10 is automatically updated, which is always enabled. ISP fees may apply and additional requirements may apply over time for updates. See <http://www.windows.com/>.
- ² Some devices for academic use will automatically be updated to Windows 10 Pro Education with the Windows 10 Anniversary Update. Features vary; see <https://aka.ms/ProEducation> for Windows 10 Pro Education feature information.
- ³ Multi-core is designed to improve performance of certain software products. Not all customers or software applications will necessarily benefit from use of this technology. Performance and clock frequency will vary depending on application workload and your hardware and software configurations. Intel's numbering, branding and/or naming is not a measurement of higher performance.
- ⁴ For systems configured with more than 3 GB of memory and a 32-bit operating system, all memory may not be available due to system resource requirements. Addressing memory above 4 GB requires a 64-bit operating system. Memory modules support data transfer rates up to 2666 MT/s; actual data rate is determined by the system's configured processor. See processor specifications for supported memory data rate. All memory slots are customer accessible / upgradeable.
- ⁵ For storage drives, GB = 1 billion bytes. TB = 1 trillion bytes. Actual formatted capacity is less. Up to 30 GB (for Windows 10) of disk is reserved for system recovery software.
- ⁶ Intel® Turbo Boost technology requires a PC with a processor with Intel Turbo Boost capability. Intel Turbo Boost performance varies depending on hardware, software and overall system configuration. See www.intel.com/technology/turboboost for more information.
- ⁷ Wireless access point and Internet service required and not included. Availability of public wireless access points limited.
- ⁸ Antimicrobial USB Mouse, HP USB Hardened Mouse, HP USB Grey Mouse and HP USB Business Slim Antimicrobial Keyboard are not available in all regions.
- ⁹ Intel® Optane™ memory is sold separately. Intel® Optane™ memory system acceleration does not replace or increase the DRAM in your system. Available for HP commercial desktops and notebooks and for select HP workstations (HP Z240 Tower/SFF, Z2 Mini, ZBook Studio, 15 and 17 G5) and requires a SATA HDD, 7th Gen or higher Intel® Core™ processor or Intel® Xeon® processor E3-1200 V6 product family or higher, BIOS version with Intel® Optane™ supported, Windows 10 version 1703 or higher, M.2 type 2280-S1-B-M connector on a PCH Remapped PCIe Controller and Lanes in an x2 or x4 configuration with B-M keys that meet NVMe™ Spec 1.1, and an Intel® Rapid Storage Technology (Intel® RST) 15.5 driver.
- ¹⁰ HP Driver Packs: Not preinstalled, however available for download at <http://www.hp.com/go/clientmanagement>
- ¹¹ HP BIOSphere Gen5 is available on select HP Pro and Elite PCs. See product specifications for details. Features may vary depending on the platform and configurations.
- ¹² Based on US EPEAT® registration according to IEEE 1680.1 -2018 EPEAT®. Status varies by country. Visit www.epeat.net for more information.
- ¹³ All memory slots are customer accessible / upgradeable.
- ¹⁴ HP USB and PS/2 Washable Keyboard: PS/2 port not available on EliteOne 800 G4 AiOs.
- ¹⁵ External power supplies, power cords, cables and peripherals are not Low Halogen. Service parts obtained after purchase may not be Low Halogen.
- ¹⁶ 150 W external power adapter, up to 89% efficiency, active PFC: when ordered with an AMD Radeon RX 560 with 4GB GDDR discrete graphics card.
- ¹⁷ Your product does not support Windows 8 or Windows 7. In accordance with Microsoft's support policy, HP does not support the Windows 8 or Windows 7 operating system on products configured with Intel® 8th generation and forward processors or provide any Windows 8 or Windows 7 drivers on <http://www.support.hp.com>
- ¹⁸ Absolute Persistence Module: Absolute agent is shipped turned off, and will be activated when customers activate a purchased subscription. Subscriptions can be purchased for terms ranging multiple years. Service is limited, check with Absolute for availability outside the U.S. The Absolute Recovery Guarantee is a limited warranty. Certain conditions apply. For full details visit: <http://www.absolute.com/company/legal/agreements/compturace-agreement>. Data Delete is an optional service provided by Absolute Software. If utilized, the Recovery Guarantee is null and void. In order to use the Data Delete service, customers must first sign a Pre-Authorization Agreement and either obtain a PIN or purchase one or more RSA SecureID tokens from Absolute Software.
- ¹⁹ For the methods outlined in the National Institute of Standards and Technology Special Publication 800-88 "Clear" sanitation method. HP Secure Erase does not support platforms with Intel® Optane™.
- ²⁰ HP Support Assistant: Requires Windows and Internet access.
- ²¹ HP Sure Recover Gen2: See product specifications for availability. Requires an open, wired network connection. Not available on platforms with multiple internal storage drives. You must back up important files, data, photos, videos, etc. before using HP Sure Recover to avoid loss of data. HP Sure Recover (Gen1) does not support platforms with Intel® Optane™.
- ²² HP Sure Click is available on select HP platforms and supports Microsoft Internet Explorer, Google Chrome™, and Chromium™. Supported attachments include Microsoft Office (Word, Excel, PowerPoint) and PDF files in read only mode, when Microsoft Office or Adobe Acrobat are installed.
- ²³ HP Manageability Integration Kit can be downloaded from <http://www.hp.com/go/clientmanagement>.
- ²⁴ Not available with all processors.
- ²⁵ HP Client Security Manager Gen5 requires Windows and is available on the select HP Pro and Elite PCs. See product specifications for details.
- ²⁶ HP Automatic Drive Lock is not supported on NVMe drives.
- ²⁷ Sold separately or as an optional feature.
- ²⁸ HP Sure Start Gen5 is available on select HP PCs with Intel® processors. See product specifications for availability.
- ²⁹ Intel® Identity Protection Technology (Intel® IPT): Models configured with Intel® Core™ processors have the ability to utilize advanced security protection for online transactions. Intel® Identity Protection Technology (Intel® IPT), used in conjunction with participating web sites, provides double identity authentication by adding a hardware component in addition to the usual user name and password. Intel® Identity Protection Technology (Intel® IPT) is initialized through an HP Client Security module.
- ³⁰ RAID configuration: Is optional and does require a second hard drive.
- ³¹ HP Sure Run Gen2: See product specifications for availability.
- ³² 1 USB 3.1 Type-C™ Gen 2 (with Thunderbolt™): 1 USB 3.1 Type-C™ Gen 1 (100W Power Delivery, DisplayPort™): Only available with the HP EliteDesk 800 G5 35W Desktop Mini PC and HP EliteDesk 800 G5 65W Desktop Mini PC.
- ³³ Some functionality of vPro, such as Intel Active Management Technology and Intel Virtualization technology, requires additional 3rd party software in order to run. Availability of future "virtual appliances" applications for Intel vPro technology is dependant on 3rd party software providers. Compatibility with future "virtual appliances" is yet to be determined.
- ³⁴ Only select processors available with each configuration.
- ³⁵ Only Available on 35W processor.
- ³⁶ Not available with 95W processor.
- ³⁷ 1 USB 3.1 Type-C™ Gen 2 (with Thunderbolt™): Not available with 95W processor.
- ³⁸ 1 USB 3.1 Type-C™ Gen 1 (100W Power Delivery, DisplayPort™): Not available with 95W processor.
- ³⁹ 1 HP Fiber NIC Port Flex I/O: Not available with 95W processor.
- ⁴⁰ Wireless access point and internet service required and sold separately. Availability of public wireless access points limited. Wi-Fi 6 is backwards compatible with prior 802.11ax specs. The specifications for Wi-Fi 6 (802.11ax) are draft and are not final. If the final specifications differ from the draft specifications, it may affect the ability of the notebook to communicate with other 802.11ax devices. Only available in countries where 802.11ax is supported.
- ⁴¹ For full Intel® vPro™ functionality, Windows, a vPro supported processor, vPro enabled chipset, vPro enabled wired LAN card and discrete TPM 2.0 are required. See <http://intel.com/vpro>
- ⁴² HP Cloud Recovery is available for HP Elite and Pro desktops and laptops PCs with Intel® or AMD processors and requires an open, wired network connection. Note: You must back up important files, data, photos, videos, etc. before use to avoid loss of data. Detail please refer to: <https://support.hp.com/us-en/document/c05115630>.
- ⁴³ Intel® Core™ i5-8500T with Intel® UHD Graphics 630: Only available on 35W processor; Intel® Core™ i5-8500 with Intel® UHD Graphics 630: Only available on 65W processor.
- ⁴⁴ As of 2019, AMD Radeon™ RX 560 is renamed to AMD Radeon™ RX 560X.

Sign up for updates hp.com/go/getupdated

© Copyright 2020 HP Development Company, L.P. The information contained herein is subject to change without notice. The only warranties for HP products and services are set forth in the express warranty statements accompanying such products and services. Nothing herein should be construed as constituting an additional warranty. HP shall not be liable for technical or editorial errors or omissions contained herein.

Intel, the Intel logo, Intel Core, Optane, vPro, Thunderbolt, and Core Inside are trademarks or registered trademarks of Intel Corporation or its subsidiaries in the United States and other countries. USB Type-C® and USB-C® are registered trademarks of USB Implementers Forum. Adobe PDF is a trademark of Adobe Systems Incorporated. DisplayPort™ and the DisplayPort™ logo are trademarks owned by the Video Electronics Standards Association (VESA®) in the United States and other countries. AMD and Radeon are trademarks of Advanced Micro Devices, Inc. ENERGY STAR is a registered trademark owned by the U.S. Environmental Protection Agency. All other trademarks are the property of their respective owners.

4AA7-5436EAP, March 2020

