



AOPEN

Bright Ideas Connected

eTILE



All-in-one Interactive Touch Device **eTILE 22M-FW**

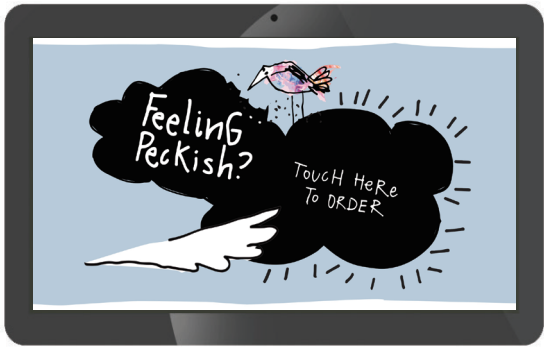
The eTILE 22 is an ultra-thin interactive all-in-one touch display. Based on Intel® Broadwell technology, this powerful dynamic touch device will enhance the interactive experience. Furthermore it incorporates a Full HD display, Full HD Webcam and port cover to minimize user tampering. Purposely built for 24/7 use in kiosk environments.

A tamper proof commercial Full HD solution:

- + Ultra slim form factor (33 mm)
- + 5th Generation embedded CPU with support for 4K content playback
- + Handles high operation vibrations for use in harsh environments
- + Tamper resistant because of cable management, hidden keypad and port cover
- + IP65 grade dust & waterproof front panel



eTILE 22M-FW



33 mm

Model name		WT22M-FW
Feature		An ultra-thin, tamper proof interactive all-in-one touch display
Dimension	W x H x D (mm)	526x333x33 mm
	W x H x D (inch)	20,70x13,11x1,30 inch
Weight (Kg/Pound)		6 kg / 13.2 lbs (N.W.)
SoC	Type	Intel® Broadwell CPU i3-5010U
Memory	Channels	Dual Channel
	Type	DDR3 2GB x 2 Low voltage
	DDR	1333
	Max Memory	16G
Graphics	Embedded	Intel® HD Graphics 5500
Audio	Type	HDMI 1.4a Analog 2 channels I/O
LAN		Single Intel Gigabit Ethernet Intel WGI218LM 10/100/1000 Mbps
Mass Storage		Supports 2.5" SATA III HDD/SSD (HDD enclosure not included) and mSATA Default 64G mSATA SSD
Touch Panel		PCT Multi Touch Surface (10 point touch) Pencil Hardness = 7H per ASTM D3363 Pen Hitting: more than 20,000,000 times (loading 180g)
Microphone		Built-in internal Mono MIC
Speaker		Built-in 2W Stereo Speakers
Webcam		Built-in 2MP Webcam

Panel Specs	Resolution	21,5" (1920 x 1080; 16:9)
	Brightness	250 nits
	Panel Type	VA
	View Angle	Horizontal: 89/89 Vertical: 89/89
	Back Light Type	E-LED
Side Panel I/O	Audio Line-Out	x 1
	DC Jack	x 1
	Mic/line in	x 1
	HDMI Out Port	1.4a HDMI x 1
	USB 2.0 Port	x 4
	USB 3.0 Port	x4
	RJ45 LAN Jack	x 1
	DC 12V-20V Input	x 1
	RJ50 Ports	x 4
	Antenna Hole	x2
Adapter		90W (19V, 4.74A) AC Adapter
Watchdog Timer		1 sec~255 sec
IP Grade		Front panel IP65 dust- & waterproof
Security		Hidden Keypad Secure cable and port cover Concealed on/off controls
Accessories		Wall Mount Kit, internal Wifi Antenna, Powercord, Other accessories available on request

Environment		
Operating Temperature		0 ~ 40°C (32 ~ 104°F)
MTBF		50,000 hours
Storage Conditions		-20 ~ 60°C (-4~140°F) 90% RH (40°C non condensing)
Vibrations	Operating Vibration	1Grms, random, 10~500Hz, X, Y, Z, 3Axes, 0.5Hr/Axis
	Non-operating Vibration	2Grms, random 10~500Hz, X, Y, Z, 3Axes
	Operating Shock	8G, half sine, 11ms duration, 3Axes, 6Direction

The specifications depicted may be subject to change without prior notice. All trademarks are copyright of their respective owners. © AOPEN Inc.

Supports:



AOPEN

Bright Ideas Connected