



Philips Brilliance
LCD monitor with USB-C
Dock

P Line

27" (68.5 cm)
3840 x 2160 (4K UHD)

Brilliance



272P7VUBNB

Simplify your connections

with USB-C docking monitor

This Philips UltraClear 4K UHD monitor with USB-C docking replaces cable clutter. View UHD images, secure connect to intranet, re-charge your notebook. All at the same time with a single USB-C cable.

Single cable USB-C connection

- Built in USB-C docking station
- Connect your notebook with one USB-C cable
- Power and re-charge compatible notebook from the monitor
- USB 3.2 high speed data transfer
- Built in RJ-45 ethernet gives data security

Brilliant performance

- UltraClear 4K UHD (3840x2160) resolution for precision
- IPS technology for full colors and wide viewing angles

Designed for comfortable productivity

- SmartErgoBase enables people-friendly ergonomic adjustments
- LowBlue Mode for easy on-the-eyes productivity
- Less eye fatigue with Flicker-free technology

Sustainable Eco-design

- PowerSensor saves up to 80% energy costs

PHILIPS

LCD monitor with USB-C Dock
P Line 27" (68.5 cm), 3840 x 2160 (4K UHD)

Highlights

Built in USB-C docking station

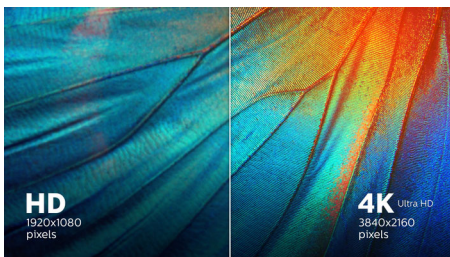


This Philips display features a built-in USB type-C docking station with power delivery. Its slim, reversible USB-C connector allows for easy, one-cable docking. Simplify by connecting all your peripherals like keyboard, mouse and your RJ-45 Ethernet cable to the monitor's docking station. Simply connect your notebook and this monitor with a single USB-C cable to watch high-resolution video and transfer super-speed data, while powering up and re-charging your notebook at the same time.

Power & re-charge notebook

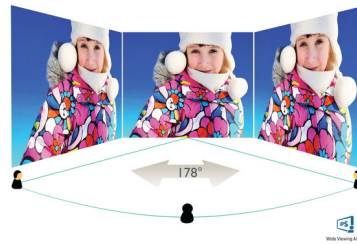
This monitor features a built in USB-C connector which meets USB Power Delivery standard. With intelligent and flexible power management, you can now power up and or re-charge your compatible* Notebook directly from the Monitor using a single USB-C cable.

UltraClear 4K UHD Resolution



These Philips displays utilize high performance panels to deliver UltraClear, 4K UHD (3840 x 2160) resolution images. Whether you are demanding professional requiring extremely detailed images for CAD solutions, using 3D graphics applications or a financial wizard working on huge spreadsheets, Philips displays will make your images and graphics come alive.

IPS technology



IPS displays use an advanced technology which gives you extra wide viewing angles of 178/178 degree, making it possible to view the display from almost any angle - even in 90 degree Pivot mode! Unlike standard TN panels, IPS displays gives you remarkably crisp images with vivid colors, making it ideal not only for Photos, movies and web browsing, but also for professional applications which demand color accuracy and consistent brightness at all times.

SmartErgoBase



The SmartErgoBase is a monitor base that delivers ergonomic display comfort and provides cable management. The base's people-friendly height, swivel, tilt and rotation angle adjustments position the monitor for maximum comfort that can ease the physical strains of a long workday; cable management reduces cable clutter and keeps the workspace neat and professional.

272P7VUBNB/27

LowBlue Mode



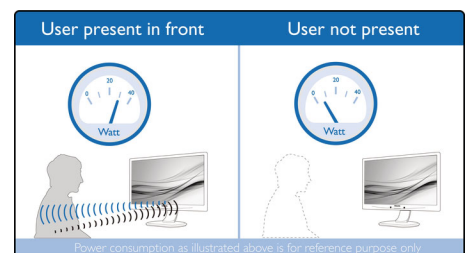
Studies have shown that just as ultra-violet rays can cause eye damage, shortwave length blue light rays from LED displays can cause eye damage and affect vision over time. Developed for wellbeing, Philips LowBlue Mode setting uses a smart software technology to reduce harmful shortwave blue light.

Flicker-free technology



Due to the way brightness is controlled on LED-backlit screens, some users experience flicker on their screen which causes eye fatigue. Philips Flicker-free Technology applies a new solution to regulate brightness and reduce flicker for more comfortable viewing.

PowerSensor



PowerSensor is a built-in 'people sensor' that transmits and receives harmless infrared signals to determine if user is present and automatically reduces monitor brightness when user steps away from the desk, cutting energy costs by up to 80 percent and prolonging monitor life



USB Docking



Ethernet



Ultra HD



Wide Viewing Angle



SmartErgo Base



LowBlue Mode



Flicker-free



PowerSensor



HDMI

Specifications

Picture/Display

- LCD panel type: IPS technology
- Backlight type: W-LED system
- Panel Size: 27 inch / 68.5 cm
- Display Screen Coating: Anti-Glare, 3H, Haze 25%
- Effective viewing area: 596.7 (H) x 335.7 (V)
- Aspect ratio: 16:9
- Optimum resolution: 3840 x 2160 @ 60Hz
- Pixel Density: 163 PPI
- Response time (typical): 5 ms (Gray to Gray)*
- Brightness: 350 cd/m²
- Contrast ratio (typical): 1,000:1
- SmartContrast: 80,000,000:1
- Pixel pitch: 0.155 x 0.155 mm
- Viewing angle: 178° (H) / 178° (V), @ C/R > 10
- Flicker-free
- Picture enhancement: SmartImage
- Display colors: Color support 1.07 billion colors
- Color gamut (typical): NTSC 103%, sRGB 122%*
- Scanning Frequency: 30 - 160 kHz (H) (HDMI 2.0 / DP 1.2 / USB-C) / 23 - 75 Hz (V) (HDMI 2.0 / DP 1.2 / USB-C)
- Brightness uniformity: 97% ~ 102%
- Delta E: <2
- sRGB
- LowBlue Mode
- EasyRead

Connectivity

- Signal Input: DisplayPort 1.2, HDMI 2.0, USB-C 3.2 Gen2 x 1 (upstream, power delivery up to 65 W)
- USB: USB-C 3.2 x 1 Gen 2 (upstream), USB 3.2 x 2 (downstream, w/ 1 fast charging)
- Audio (In/Out): Headphone out
- RJ45: Ethernet LAN up to 1G*
- Sync Input: Separate Sync, Sync on Green

USB docking

- USB-C: Reversible plug connector
- Super speed: Data and Video transfer
- DP: Built-in DisplayPort Alt mode
- USB-C power delivery: USB PD version 3.0
- USB-C max. power delivery: Upto 65 watts (5V/3A, 9V/3A, 10V/3A, 12V/3A, 15V/3A, 20V/3.25A)

Convenience

- User convenience: SmartImage, Input, PowerSensor, Menu, Power On/Off
- Control software: SmartControl
- OSD Languages: Brazil Portuguese, Czech, Dutch, English, Finnish, French, German, Greek, Hungarian, Italian, Japanese, Polish, Portuguese, Russian, Simplified Chinese, Spanish, Swedish, Traditional Chinese, Turkish, Ukrainian
- Other convenience: Kensington lock, VESA mount (100x100mm)
- Plug & Play Compatibility: DDC/CI, Mac OS X, sRGB, Windows 10 / 8.1 / 8 / 7

Stand

- Height adjustment: 150 mm
- Pivot: 90 degree
- Swivel: -175/175 degree
- Tilt: -5/30 degree

Power

- ECO mode: 21.5 W (typ.)
- On mode: 23.5 W (typ.) (EnergyStar 7.0 test method)
- Standby mode: < 0.4 W (typ.)
- Off mode: Zero watts with Zero switch
- Power LED indicator: Operation - White, Standby mode- White (blinking)
- Power supply: Built-in, 100-240VAC, 50-60Hz

Dimensions

- Product with stand(max height): 614 x 548 x 257 mm
- Product with stand(max height): 24.2 x 21.6 x 10.1 inch
- Product without stand (mm): 614 x 372 x 56 mm
- Product without stand in inch: 24.2 x 14.6 x 2.2 inch
- Packaging in mm (WxHxD): 690 x 458 x 252 mm
- Packaging in inch (WxHxD): 27.2 x 18.0 x 9.9 inch

Weight

- Product with stand (kg): 7.68 kg
- Product with stand (lb): 16.90 lb
- Product without stand (kg): 5.25 kg
- Product without stand (lb): 11.55 lb
- Product with packaging (kg): 10.50 kg
- Product with packaging (lb): 23.10 lb

Operating conditions

- Temperature range (operation): 0°C to 40°C °C
- Temperature range (storage): -20°C to 60°C °C
- Relative humidity: 20%-80 %
- Altitude: Operation: +12,000ft (3,658m), Non-operation: +40,000ft (12,192m)
- MTBF: 70,000 hrs (excluded backlight) hour(s)

Sustainability

- Environmental and energy: PowerSensor, EnergyStar 7.0, EPEAT*, RoHS, TCO Certified Edge
- Recyclable packaging material: 100 %
- Post consumer recycled plastic: 85%
- Specific Substances: PVC / BFR free housing, Mercury free, Lead free

Compliance and standards

- Regulatory Approvals: CE Mark, FCC Class B, SEMKO, cETLus, CU-EAC, TUV Ergo, TUV/GS, EPA, ICES-003

Cabinet

- Front bezel: Black
- Rear cover: Black
- Foot: Black
- Finish: Texture

What's in the box?

- Monitor with stand
- Cables: HDMI cable, DP cable, USB-C to C cable, USB-C to A cable, Power cable
- User Documentation



Issue date 2020-09-08

Version: 5.0.1

12 NC: 8670 001 60684
UPC: 6 09585 25290 5

© 2020 Koninklijke Philips N.V.
All Rights reserved.

Specifications are subject to change without notice.
Trademarks are the property of Koninklijke Philips N.V. or their respective owners.

www.philips.com

- * "IPS" word mark / trademark and related patents on technologies belong to their respective owners.
- * Response time value equal to SmartResponse
- * NTSC Area based on CIE1976
- * sRGB Area based on CIE 1931
- * Activities such as screen sharing, on-line streaming video and audio over the Internet can impact your network performance. Your hardware, network bandwidth and its performance will determine overall audio and video quality.
- * For USB-C power and charging function, your Notebook/device must support USB-C standard Power Delivery specifications. Please check with your Notebook user manual or manufacturer for more details.
- * For Video transmission via USB-C, your Notebook/device must support USB-C DP Alt mode
- * If your Ethernet connection seems slow, please enter OSD menu and select USB 3.0 or higher version which can support the LAN speed to 1G.
- * EPEAT rating is valid only where Philips registers the product. Please visit <https://www.epeat.net/> for registration status in your country.
- * The monitor may look different from feature images.