

HU85LA

CineBeam Laser 4K UHD Ultra Short Throw

4K UHD (3840x2160)

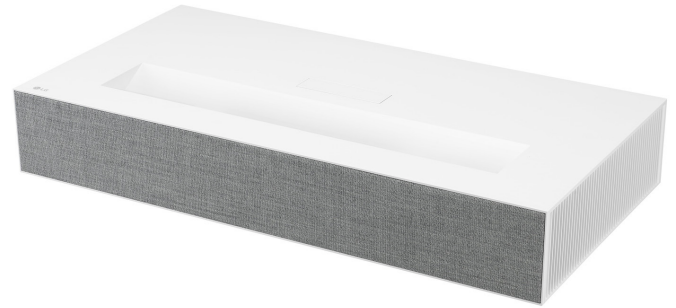
Up To 2700 Lumen

120" screen @ 7.2 inch away

LG ThinkQ - AI

IP Control

HDR10 & Trumotion



PROJECTION SYSTEM	
Display Type	DLP
Native Resolution	4K UHD (3840 x 2160)*
Screen Size	90" ~ 120"
4K Upscaling / Super Resolution	Yes
Projection Image	120"@7.2inch 100"@3.9inch 90"@2.2inch
Aspect Ratio	16:9/Original/4:3/Vertical Zoom/ All-Direction Zoom
Brightness	Up to 2700 lumens**
Contrast Ratio	2,000,000:1
Lamp Type	Laser (B/R LD)
Lamp Life	Up to 20,000 hrs
Noise	26↓ / 28↓ / 30dB(A)↓
HDCP	HDCP2.2
Trumotion	Yes
HDR	HDR10
Digital Keystone Correction	Advanced Edge Adjustment (12 Point Warping)
LG SMART TV	
Premium content providers	Netflix, Youtube, Amazon, LG Channels, Google Play Movies, FandangoNow, Spotify Music***
Magic Remote	Yes
App Store	Yes
Web Browser	Yes
AI Voice Recognition	LG ThinQ + Google Assistant
CONNECTIVITY / WIRELESS	
DTV Tuner	Yes
USB	Yes
Bluetooth (with Speaker)	Yes
Screen Share (with Miracast, WiDi supporting device)	Yes
Wireless Contents Share (with iOS, Android devices via LG TV Plus App)	Yes

AUDIO	
Bluetooth sound out	Yes
Built-in Speakers	5W + 5W Stereo
Bluetooth AV Sync Adjustment	Yes
INPUTS/OUTPUTS	
Digital TV Tuner	Yes
Audio out	S/PDIF 1(Optical)
HDMI™	2 (HDMI 2.0)
USB (Video, MP3, Photo)	2 (USB 2.0)
USB Type C	1 (USB2.0, Display, Power : 5V/1A Out)
RJ45	1
HID (Keyboard/Mouse/ GamePad Connection Thru USB)	Yes
IP Control	Yes
POWER	
Power Supply (Voltage/Hz)	100V – 240V @ 50-60 Hz (PSU Built-in)
Power Consumption	350W (Max)
Standby Mode	<0.5W
Quick On/Off	Yes (On in 12 seconds – Off in 2 seconds)
ACCESSORIES / MANUAL	
Remote Control	1 Magic Remote (Battery included)
Manual	Simple Book
Adaptor	PSU built-in
DIMENSIONS/WEIGHT	
Product (WxHxD)	26.8" x 5.0" x 13.7"
Shipping Dimensions (WxHxD)	33.7" x 10" x 18.1"
Weight	26.9 lbs
Shipping Weight	33.3 lbs
WARRANTY / UPC	
Limited Warranty	2 Year Parts & Labor
UPC	719192632066

*4K UHD resolution with 8.3 million discrete pixels projected by XPR (Expanded Pixel Resolution) video processing
 **The brightness is based on the perceived brightness equivalent to the brightness of lamp projector
 ***Some apps may be available via software update, which requires internet connection