

ENGINEERED FOR EFFORTLESS PRODUCTIVITY



Lenovo

The ThinkPad E495 is thin, lightweight, and has a premium metallic construction—well-suited for professionals who need on-the-go productivity.

A sleeker design and narrow bezel, up to AMD Ryzen™ 7 3700U Processor, optional dual drive storage, and USB 3.1 ports enhance user experience. The discrete TPM 2.0 chip and Windows Hello with Touch Fingerprint Reader* on this device offer robust security. With legendary ThinkPad durability, the E495 laptop is an apt choice for everyday use.

*Optional



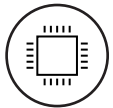
ThinkPad® E495 LAPTOP



Lenovo



Purposeful Design: modern design, fine metallic finish, lightweight, narrow bezel, and small footprint make the ThinkPad E495 portable and the perfect choice for users who travel frequently.



Power-packed Performance: with up to AMD Ryzen™ 7 3700U Processor, AMD integrated graphics, and two SODIMM* you can enjoy faster performance and a responsive computing experience.



Convenient Connectivity: the USB-C port, compatible with all the latest gen devices, offers versatile connectivity from a single source for multitasking effortlessly.



User Comfort: the full-HD* anti-glare IPS display offers a superior viewing experience. The full-sized ergonomic keyboard with backlight* is comfortable to use even in low light surroundings.



Superior Conferencing: HD webcam with Skype for Business certified dual-array mic and Dolby® Audio™ that dynamically adjusts audio to deliver a virtual surround sound experience from PC speakers or headphones, enable seamless web conferencing and enhanced VoIP meetings.

ThinkPad® E495 LAPTOP

Benefits for the IT Department

Productive

Thin, lightweight, and powered by a high-performance processor for improved productivity, even when on the go.

Secure

The discrete TPM 2.0 chip encrypts confidential data while Windows Hello that works with the Touch Fingerprint Reader* ensures secure PC access.

Durable

Reliable laptop with legendary ThinkPad durability to withstand rugged office usage.

*Optional

Accessories



Lenovo Essential Wireless Keyboard and Mouse Combo

(PN: 4X30M39458)

This durable keyboard and mouse combo plugs into any USB with wired reliability you can count on. A tough, waterproof membrane handles accidental spills without risking performance, plus quiet keys and an ergonomic full-size mouse offer comfort for all-day use.

Lenovo



ThinkPad USB-C Dock

(PN: 40A90090US)

This universal docking solution ensures a high-performance workstation experience. Meet all your productivity needs, including video, data, and wired network, all while delivering continuous power to your laptop via a robust USB-C port.



ThinkPad Active Backpack

(PN: 4X40L45611, 4X40E77337)

The ThinkPad Active Backpack is made with super lightweight, water- and tear-resistant nylon, and has plenty of storage for your laptop and travel essentials. It is compatible with ThinkPad laptops and others up to 15.6" wide.

ThinkPad E495 Laptop

PERFORMANCE

Processor

Up to AMD Ryzen™ 7 3700U Processor

Operating System

Windows 10 Pro (64 bit)

Graphics

AMD integrated graphics

Camera and Mic

720p with dual-array Skype-certified microphone

Memory

Up to 32GB (2 DIMM) DDR4

Storage

Up to 512GB PCIe M.2 SSD
Up to 2TB (5400rpm) 2.5 SATA HDD
Dual Drive storage*

Battery

Up to 13 hours** 45Whr battery

AC Adapter

45W or 65W with RapidCharge

Audio

Skype for Business certified
dual-array mic
Dolby® Audio™ stereo speakers

SECURITY

Discrete TPM 2.0
Touch FPR* with Windows Hello
Kensington™ lock slot

CONNECTIVITY

Input/Output Ports

1 x USB-C (USB 3.1/DP 1.2/PD 3.0)
2 x USB 3.1
1 x USB 2.0
HDMI 1.4b
RJ45
MicroSD card slot
Combo Mic/Audio

WLAN

Dual Band 2 x 2ac
Bluetooth® 4.x

Docking

USB-C
USB 3.0 Dock
USB 3.0 Ultra Dock

DESIGN

Display

14" FHD IPS (1920 x 1080 pixels) with anti-glare
14" HD (1366 x 768 pixels) with anti-glare

Dimensions (W x D x H)

MM: 329 x 242 x 19.9
Inches: 12.9 x 9.5 x 0.78 (Metal A-cover)
MM: 329 x 242 x 21.9
Inches: 12.9 x 9.5 x 0.86 (Plastic A-cover)

Weight

Starting at 1.75kg/3.87lbs.

Keyboard and Touchpad

Full-sized backlit* keyboard
Precision touchpad

Colors

Black

PRELOADED SOFTWARE

Lenovo Vantage
Lenovo Migration Assistant
McAfee® LiveSafe™ (trial)
Microsoft Office (trial, except in Japan)

RECOMMENDED SERVICES

Lenovo™ offers a comprehensive portfolio of services to support and protect your ThinkPad® investment—so you can focus on your work, not your IT.

Premier Support

Provides direct access to skilled and experienced Lenovo technicians offering comprehensive hardware and software support. Gives you a consistent point of contact within Lenovo to ensure that your case resolution is professionally managed from start to finish.

Accidental Damage Protection (ADP)

Prevents the hassles of unexpected repair costs. Provides coverage for non-warranted damage incurred under normal operating conditions, such as minor spills, drops, or damage to the integrated screen.

Warranty Extension (1-year base, up to 3 years total)

This fixed-term, fixed-cost service helps you accurately budget for PC expenses, protect your valuable investment, and lower the cost of ownership over time.

*Optional

**Based on testing with MobileMark 2014. Battery life varies significantly with settings, usage, and other factors.

Depending on many factors such as the processing capability of peripheral devices, file attributes, and other factors related to system configuration and operating environments, the actual transfer rate using the various USB connectors on this device will vary and is typically slower than the data rates as defined by the respective USB specifications: - 5 Gbit/s for USB 3.1 Gen1; 10 Gbit/s for USB 3.1 Gen2 & 20 Gbit/s for USB 3.2.

© 2019 Lenovo. All rights reserved. These products are available while supplies last. Prices shown are subject to change without notice. For any questions concerning price, please contact your Lenovo Account Executive. Lenovo is not responsible for photographic or typographic errors. Warranty: For a copy of applicable warranties, write to: Warranty Information, 500 Park Offices Drive, RTP, NC 27709, Attn: Dept. ZPYA/B600. Lenovo makes no representation or warranty regarding third-party products or services. Trademarks: Lenovo, the Lenovo logo, Rescue and Recovery, ThinkPad, ThinkCentre, ThinkStation, ThinkVantage, and ThinkVision are trademarks or registered trademarks of Lenovo. Microsoft, Windows, and Vista are registered trademarks of Microsoft Corporation. AMD, the AMD Arrow logo, and combinations thereof are trademarks of Advanced Micro Devices, Inc. in the United States and/or other jurisdictions. Other company, product, and service names may be trademarks or service marks of others.

