

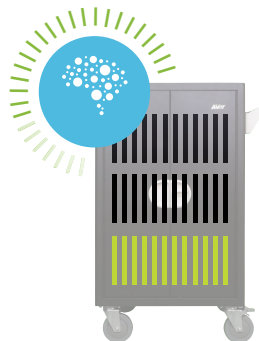
AVerCharge E36c+

36 Device Economy Charging Cart



Intelligent charging and cable management

The E36c+ features easy cable management and knows which devices need to be charged and routes power to these devices.



Easy on the pocketbook

Quality device management does not have to equate to big spending. E36c+ provides all your charging needs at a fraction of the cost.



One cart fits all

E36c+ easily supports 36 Laptops, Chromebooks, or Tablet devices with screens up to 15". Need to charge your own laptop while charging your students' tablets? Sure, why not.



Sleek and classy

Internally spacious enough to store 36 devices yet sleekishly designed externally to fit in the most confined spaces. Ideal for any tight areas!



Maneuver with finesse

E36c+'s compact design and 5" swivel casters make it easier to transport devices and provide a smooth mobile experience even in the most crowded corridors or smallest spaces.



Specifications

Device Capacity	36	Slot Size	W = 3.2cm (1.26") D = 38cm (14.96") H = 26cm (10.24")
Support Device	Laptop/Chromebook/Tablets up to 15"	Charging Type	Intelligent Charging
Sync Type	N/A	External Power Outlets	N/A
LED Indicator	N/A	Sliding Shelves	N/A
Divider type	Metal Bar with Rubber Coating	Foam on Bar	No
Cart Dimension	H = 108.8cm (42.83") W = 68.8cm (27.09") D = 64cm (25.20")	Package Dimension	H = 125.5cm (49.41") W = 77cm (30.31") D = 73cm (28.74")
Net weight	60kg (132.3lbs)	Gross weight	79kg (174.2lbs)
Power Specification	AC IN: 100-120V ~ 50/60Hz, 12A Power Strip: 100-120V ~ 50/60Hz, 12A	Cable Management	Individual AC adapter holders with built-in individual cable management metal clips
Security	Front doors: 3 point mechanism with lock hole	Casters	5" casters x 4 2 among are lockable
Security Hook	Yes	Fan	N/A
Warranty	10 years mechanical components 5 years electrical components	Adaptor holder inner dimension	N/A



AVer Information Inc. Americas
averusa.com
 668 Mission Court,
 Fremont, CA 94539
 T 408.263.3828
 F 408.263.8132
 toll free 1.877.528.7824