

IFP8650-E2

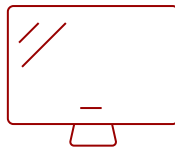
## Key Features

---

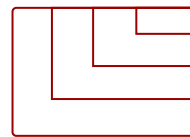
- All-in-One Solution
- ViewBoard Interactive Flat Panel
- Faster WiFi
- Mobile Trolley Cart



86  
**DISPLAY**



**PANEL**



**RESOLUTION**

## Product Description

---

Ideal for education environments, this all-in-one ViewBoard Bundle includes a 86" ViewBoard IFP8650 4K interactive flat panel, a wireless AC adapter, and a VB-STND-001 mobile trolley cart.

## Specifications

---

### More Information


|                            |             |
|----------------------------|-------------|
| <b>Display Size (in.)</b>  | 86          |
| <b>Viewable Area (in.)</b> | 86          |
| <b>Light Source</b>        | LED         |
| <b>Resolution</b>          | 3840 x 2160 |
| <b>Refresh Rate (Hz)</b>   | 60          |
| <b>Aspect Ratio</b>        | 16:9        |

|                                    |   |
|------------------------------------|---|
| <b>Static Contrast Ratio</b>       | 1,200:1   |
| <b>Dynamic Contrast Ratio</b>      | 5,000:1   |
| <b>Backlight Life (Hours)</b>      | 50,000  |
| <b>Brightness</b>                  | 350 cd/m2   |
| <b>Response Time (Typical GTG)</b> | 8ms   |
| <b>Viewing Angles</b>              | 178° horizontal, 178° vertical                      |
| <b>Panel Surface</b>               | 9H  |
| <b>Operation Rating</b>            | 16/7  |
| <b>Ethernet LAN</b>                | 10/100/1000 Mbps                                    |
| <b>OS</b>                          | ViewBoard OS (embedded Android 8)                   |
| <b>GPU</b>                         | ARM Mali450 MP4                                     |
| <b>CPU</b>                         | ARM Quad Core A73 + A53                             |
| <b>CPU Processor Speed</b>         | A73: 1.1GHz, A53: 1.5GHz                            |
| <b>Memory</b>                      | 2GB   |
| <b>Storage</b>                     | 16GB  |
| <b>Built-in Software</b>           | myViewBoard, Chromium browser, Zoom, ViewBoard Cast |
| <b>Internal Speakers</b>           | 10W (x2)  |
| <b>Subwoofer</b>                   | 15W (x1)  |
| <b>HDMI 2.0 In</b>                 | 3   |
| <b>VGA</b>                         | 1   |
| <b>DisplayPort</b>                 | 1   |
| <b>Composite RCA</b>               | 1   |
| <b>3.5mm Audio In</b>              | 1   |
| <b>3.5mm Audio Out</b>             | 1   |
| <b>SPDIF Audio Out</b>             | 1   |
| <b>USB 3.0</b>                     | 4   |
| <b>USB 2.0</b>                     | 3   |
| <b>Slot-in PC Slot</b>             | 1   |
| <b>USB B Touch Port</b>            | 2   |
| <b>RS232</b>                       | 1   |
| <b>Ethernet LAN (RJ45)</b>         | 1   |
| <b>WIFI Module Slot</b>            | 1   |
| <b>Voltage</b>                     | 100-240 VAC   |
| <b>Consumption (max)</b>           | 350W  |
| <b>Consumption (typical)</b>       | 155W  |
| <b>Stand-by</b>                    | <0.5W   |

|                                  |  |
|----------------------------------|--|
| <b>On Screen Display</b>         | Input, Volume, Backlight, Audio, Screen, Display, Adjust   |
| <b>Remote Control</b>            | Volume, Channel, Source, Mute, Back, Input, Menu   |
| <b>Temperature</b>               | 32-104° F (0 - 40° C)  |
| <b>Humidity (non-condensing)</b> | 10-90%   |
| <b>Touch Technology</b>          | Infrared   |
| <b>Touch Points</b>              | 20-Point Touch   |
| <b>Tip Detection</b>             | Dual tips, 3mm and 8mm   |
| <b>Net (lbs)</b>                 | 268.0  |
| <b>Gross (lbs)</b>               | 347.7  |
| <b>Net (kg)</b>                  | 117.6  |
| <b>Gross (kg)</b>                | 147.7  |
| <b>Packaging (in.)</b>           | 87.0 x 53.1 x 14.9   |
| <b>Physical (in.)</b>            | 78.3 x 46.7 x 29.5   |
| <b>Packaging (mm)</b>            | 2211.0 x 1380.0 x 380.0  |
| <b>Physical (mm)</b>             | 1988.0 x 1186.0 x 750.0  |
| <b>VESA Compatible</b>           | 800 x 600 mm   |
| <b>Warranty</b>                  | 3-year limited warranty on parts, labor and backlight, onsite warranty   |
| <b>Recycle/Disposal</b>          | Please dispose of in accordance with local, state or federal laws.   |
| <b>PACKAGE CONTENTS</b>          | IFP8650 Display, LB-WIFI-001, VB-STND-001, stylus pen x 2, power cable, remote control with batteries, ViewSonic Wizard CD (User Guide), Quick Start Guide, USB cable, camera bracket, HDMI cable, power cords |
| <b>Regulations</b>               | cTUVus, FCC, ENERGY STAR 7.0, Mexico Energy, CE, CB, RoHS, ErP, WEEE   |

## Contact Sales

[ViewSonic.com](http://ViewSonic.com)

888.881.8781 

email: [salesinfo@viewsonic.com](mailto:salesinfo@viewsonic.com) 