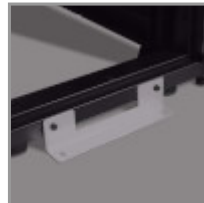


42U Server Rack, Euro-Series - Expandable Cabinet, Standard Depth, Side Panels Not Included

MODEL NUMBER: SRX42UBEXP



42U rack cabinet houses, organizes and secures standard-width rack equipment in high-density server and IT networking areas.

Features

Standard-Depth 42U Server Cabinet Accommodates 19 in. Rack Equipment This SmartRack® 42U rack enclosure is designed for network wiring closets, retail locations, classrooms, back offices and other areas with essential rack-mount IT equipment. Constructed from heavy-duty steel with a durable black powder-coated finish, the SRX42UBEXP has a maximum stationary load capacity of 1360 kilograms and a maximum rolling load capacity of 1020 kilograms.

Keeps Important Equipment Secure The reversible front door and split rear doors lock securely to help prevent damage, tampering or theft. The doors and top panel are designed for quick release, making it easy to access connected equipment and cabling with little effort. Convenient top access ports and an open bottom allow easy cable routing through the cabinet. The vented doors allow generous airflow from front to rear to keep your equipment cool and functioning at their peak.

Easy Enclosure and Equipment Installation This 42U server rack comes fully assembled for quick and easy deployment with pre-installed casters that let you maneuver it over a level, smooth, stable surface and through a standard two-meter doorway into position, where it can be stabilized by adjusting the levelers. Four mounting rails adjust in 6.35-millimeter increments to accommodate equipment up to 850 millimeters deep. Toolless 0U mounting rails allow quick installation of up to four compatible PDUs and vertical cable managers.

Designed for Baying Multiple Enclosures in a Row This expansion model comes without side panels for baying with other rack cabinets in a row. Integrated baying tabs make it easy to combine multiple units. This rack is also compatible with hot aisle/cold aisle configurations. Center-to-center width can be set at 600 millimeters to match standard data-center floor tiles. Optional side panels, such as Tripp Lite's SR42SIDE (sold separately), may be added later if desired.

Meets Payment Card Industry Standards The SRX42UBEXP provides physical equipment and media security required for PCI DSS (Payment Card Industry Data Security Standard) compliance. This is essential for companies that process, store and/or transmit credit card information.

Highlights

- 42U rack constructed from powder-coated steel that stands up to tough environments
- Front and split rear doors lock securely to help prevent damage, tampering or theft
- Ships fully assembled for quick deployment on pre-installed casters
- Comes without side panels for easy baying with multiple rack cabinets in a row
- Mounting rails accept standard rack equipment up to 850 mm deep

Applications

- Store and organize rack-mount equipment in a network closet, data center or other area where you need components to be secure

Package Includes

- (2) Keys
- (50) M6 screws
- (50) M6 washers
- (50) M6 cage nuts
- Owner's manual



Specifications

OVERVIEW	
UPC Code	037332221599
Device Compatibility	Patch Panel; Network Switch; UPS; Server
Rack Type	Enclosure
PHYSICAL	
Color	Black
Rack Height	42U
Rack Depth	Mid
Factory Preset Rack Depth (in.)	27.75
Factory Preset Rack Depth (cm)	70.5
Factory Preset Rack Depth (mm)	705
Maximum Device Depth (cm)	85.00
Maximum Device Depth (in.)	33.465
Maximum Device Depth (mm)	850
Minimum Device Depth (cm)	10.16
Minimum Device Depth (in.)	4
Minimum Device Depth (mm)	102
Shipping Dimensions (hwd / in.)	83.50 x 25.75 x 42.85
Shipping Dimensions (hwd / cm)	212.09 x 65.40 x 108.84
Shipping Weight (lbs.)	257.00
Shipping Weight (kg)	116.57
Unit Dimensions (hwd / in.)	78.5 x 23.63 x 41.25
Unit Dimensions (hwd / cm)	199,39 x 60,02 x 104,78
Unit Weight (lbs.)	225.000
Unit Weight (kg)	102.06
Weight Capacity - Rolling (kg)	1,021
Weight Capacity - Rolling (lbs.)	2250
Weight Capacity - Stationary (kg)	1,361
Weight Capacity - Stationary (lbs.)	3000
Number of Vertical Mounting Rails	4
FEATURES & SPECIFICATIONS	
Grounding Lug	Front and Back door frames



Tripp Lite
1111 W. 35th Street
Chicago, IL 60609 USA
Telephone: 773.869.1234
www.tripplite.com

STANDARDS & COMPLIANCE	
Product Certifications	UL 60950-1
Product Compliance	RoHS; CE (Europe); UKCA
WARRANTY	
Product Warranty Period (Worldwide)	5-year limited warranty

© 2022 Tripp Lite. All rights reserved. All product and company names are trademarks or registered trademarks of their respective holders. Use of them does not imply any affiliation with or endorsement by them. Tripp Lite has a policy of continuous improvement. Specifications are subject to change without notice. Tripp Lite uses primary and third-party agencies to test its products for compliance with standards. See a list of Tripp Lite's testing agencies: <https://www.tripplite.com/products/product-certification-agencies>