

MS236WT

Your advantages

The EIZO MS236WT offers first-class image quality with a 16:9 aspect ratio, as well as modern multi-touch operation for digital image distribution. The device ships with a preset DICOM tone curve. Hence it displays the graytones of radiological images correctly. The advantage of this is that the screen display is much better suited to clinical review than images shown on conventional computer monitors. Thanks to IPS-LCD it also offers wide viewing angles. This makes the picture clear and distinct from various directions of view. The MS236WT detects up to 10 touches simultaneously and permits smooth and accurate stylus input. It ignores erroneous input, such as from the ball of the hand.

- ✓ 2 megapixel color LCD monitor with touchscreen
- ✓ Grayscale display with DICOM tone curve
- ✓ Multi-touch operation (for example zooming, scrolling, turning, moving)
- ✓ Smooth, precise stylus input with hand ball detection
- ✓ Brightness 260 cd/m², contrast 1000:1
- ✓ IPS-LCD panel with wide viewing angle
- ✓ Flicker-free picture display

Features

Excellent image quality for the finest details

Thanks to the high 2 Megapixels (colour) resolution, a strong contrast ratio of 1000:1 and stable brightness of up to 260 cd/m², the monitor offers excellent image quality. Even the differences between the finest details are shown – regardless of your viewing angle. This is a great advantage if multiple physicians are looking at the screen.

RadiCS LE

Brightness and DICOM characteristic curve can be checked using the RadiCS LE software and automatically calibrated according to the factory default settings. The integrated sensor in the device takes care of this. The calibration of other tone value curves, such as CIE, is also possible with RadiCS LE.

Fine, precise stylus input

The MS236WT contains reliable capacitive touch technology (PCAP) and detects movements with very high precision. In addition to the supplied passive input stylus, the monitor can also be used with standard active touchscreen styluses. Hence you can easily capture even small writing and character input via the screen.

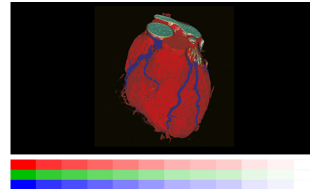
ball recognition. While writing, users can place their hands or arms on the monitor without accidentally triggering an input.

With a hardness of 5H, the glass surface is insensitive to scratches and guarantees to recognize up to 50 million touches.

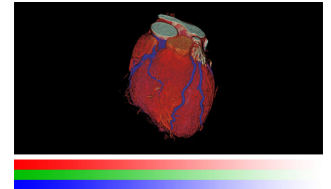


One billion color tones thanks to 10 bit LUT

An internal 10 bit LUT controls color rendering. The color gradations are considerably more exact and finer than the standard 8 bit LUTs, making clinical review easier.



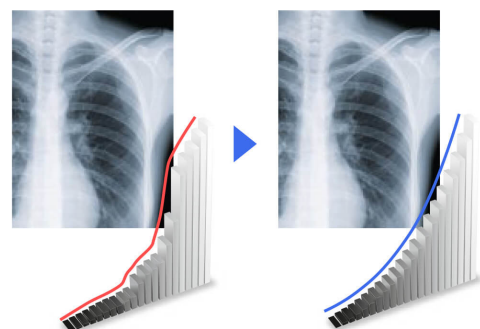
Without 10 bit LUT



With 10 bit LUT

Display of DICOM characteristic at the press of a button

EIZO measures and adjusts each tone of gray carefully so that the monitors comply with the DICOM standard when delivered from the factory. The result is a particularly consistent gradation of gray tones, allowing for optimal radiological clinical reviews.



Ergonomic writing posture on a robust interface

The monitor can detect up to ten simultaneous touches, which means that multiple individuals can operate the monitor at the same time. Furthermore, the touchscreen is equipped with hand

Features

Extended durations of use thanks to automatic shut down

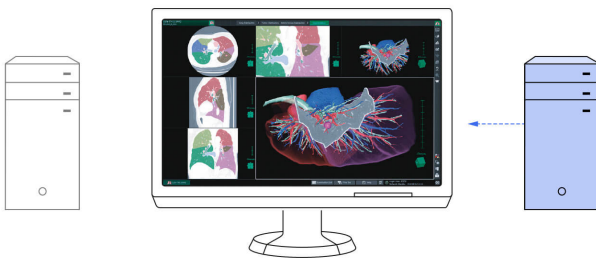
The monitor has an automatic shut down option for the backlight (backlight saver). This extends the duration of use. Similar to a screen saver, the LEDs turn off when the screen is not being used.

The backlight saver is part of the [RadiCS software](#).

With digital, analog, and audio connection

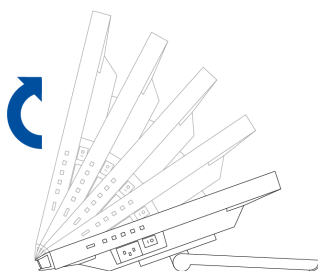
One DisplayPort and one DVI-I input allow the connection of two digital signals simultaneously. A DSub input is available for an analog signal. You can connect up to three computers simultaneously. You can switch between them automatically or manually, if desired.

A loudspeaker and headphone connection are subtly integrated in the housing. The audio connection to the monitor takes place via the DisplayPort connection or the audio jack.



Reclining Stand

The equipped stand provides flexible positioning to allow the monitor to rest on your desk like a laptop and recline back to your desired angle. This makes it easy to place the monitor in the ideal position for comfortable use in any environment.



For precise diagnoses: EIZO graphics card MED-XN51LP

The EIZO MED-XN51LP graphics card supports the properties, functions, and settings of the RadiForce MS236WT optimally. It enables precise diagnostics and can control several monitors simultaneously. EIZO offers technical support and a warranty service for all graphics cards. Therefore, we recommend using EIZO graphics cards.

[Display the specifications of the MED-XN51LP](#)



Specification

General

Item no.	MS236WT
Case colors	Black
Solutions	Medicine
Product line	RadiForce
EAN	4995047050919

Display

RadiCS application classes	VIII
Screen size [in inches]	23
Screen size [in cm]	58
Format	16:9
Viewable image size (width x height)	509.2 x 286.4
Resolution in MP	2 Megapixels (colour)
Ideal and recommended resolution	1920 x 1080 (Full HD)
Pixel Pitch Horizontal [mm]	0.26 x 0.26
Panel technology	IPS
Max. viewing angle horizontal	178 °
Max. viewing angle vertical	178 °
Number of colors or grayscale	16.7 million colors (display port, 8 Bit), 16.7 million colors (DVI, 8 Bit), 16.7 million colors (Dsub, 8 Bit)
Max. brightness (typical) [in cd/m²]	260
Max. dark room contrast (typical)	1000:1
Typical response time [gray/gray alternation]	11
Backlight	LED

Features

Color palette / look-up table	1.06 billion color tones / 10 Bit
No flickering thanks to hybrid controls	✓
Preset color/grayscale modes	User1, User2, sRGB, DICOM
DICOM tone curve	✓
OSD language	de, en, fr, es, it, se, ja, zh
Adjustment options	Brightness, Hand ball detection, Gamma, Color saturation, Color temperature, DICOM tonal value, OSD language, Interpolation, Off Timer
Touchscreen	✓
Touch Panel Type	Projected capacitive (PCAP)
Touch Compatible Os	Windows 10, Windows 8.1 (64-bit/32-bit), Windows 7 (64-bit/32-bit)
Touch Points	10
Touch Port	USB
Signal inputs	1 x DisplayPort, 1 x DVI-D, 1 x Dsub
Video Signal	DisplayPort, DVI (TMDS), RGB Analog
Frequency	Digital: 31-64 kHz/59-61 Hz; DisplayPort: 31-68 kHz/59-61 Hz; Analog: 31-81 kHz/55-76 Hz
Control Port	USB
Sync Formats	Separate
Audio Input	3.5 mm stereo jack, DisplayPort
Audio Output	3.5 mm stereo jack
Built-in speakers	✓
USB hub	1 Up-/ 2 Down-Stream, Rev. 2.0

Electric data

Power consumption (typical) [in watt]	19.00
Maximum Power Consumption [in watt]	42
Power Save Mode [in watt]	0.70
Power Consumption Off [in watt]	0
Power Supply	AC 100-120 V / 200-240 V, 50/60 Hz
Power Management	DVI-DMPM, DisplayPort Version 1.1a, VESA DPMS
Integrated power unit	✓

Dimensions & Weights

Dimensions [mm]	556,7 x 143,9-353,9 x 216,3-401,3
Weight [in kilograms]	7
Dimensions Without Stand [mm]	556,7 x 339,2 x 54
Weight Without Stand [in kilograms]	6
Incline forward/backward	15 ° / 70 °
Pivot	
Hole Spacing	VESA standard 100 x 100 mm
IP rating	IPX0
Operating Temperature	5-35°C, 20-80% (R.H., non condensing)

Certification & Standards

Certification	CE (Medical Device Directive), EN 60601-1, UL60601-1, CSA C22.2 Nr. 601-1, IEC60601-1, VCCI-B, FCC-B, ICES-003-B (CAN), C-Tick, RoHS, WEEE, CCC, GOST-R
---------------	---

Software & Accessories

Accompanying software and other accessories are available for download or on a CD	RadiCS LE
Additional Supply	Power cord, Signal cable Dsub - Dsub, Signal cable DVI-D - DVI-D, Signal cable DisplayPort - DisplayPort, USB 2.0 cable, Audio cable, EIZO LCD Utility Disk (incl. PDF manual), Touch pen incl. mount, Cleaning cloth
Accessory	RadiCS (RadiCS quality assurance for RadiForce screens), RadiNET Pro (RadiNET Pro for large hospitals), TP5 (Touch panel pointers)
Recommended graphics card	MED-XN51LP

Warranty

Warranty and service	3 years including on-site replacement service
----------------------	---