

PowerShot SX730 HS



Your Ultimate Travel Superzoom

Capturing your travel adventures at any distance has never been easier with the PowerShot SX730 HS. Featuring an ultra-wide angle 40x optical zoom with an 80x ZoomPlus, you can now get closer to your subject and capture more in every frame. At just 39.9mm thick, the camera can also easily slip into your pocket, making it ideal for photography on the go.



Focus on your subject with ease

Capture all the action with Zoom Framing Assist, the camera will track and focus on your subject even during telephoto shooting, giving you nice sharp images always.

Beautiful Self-Portraits

Switch the camera to self-portrait mode and tilt the screen up 180 degrees to capture the perfect selfie. The 24mm ultra-wide lens will allow you to capture more of the background, giving you an ideal self-portrait with the iconic landmark. Plus, you can add smooth skin effect to give you a more flattering image.



Share your holiday photos instantly

Keep everyone updated on your travel adventure by sharing your photos instantly on social. With the new Bluetooth® technology you can keep your camera and smart phone connected always and transfer photos easily with the Canon Camera Connect App.

Canon

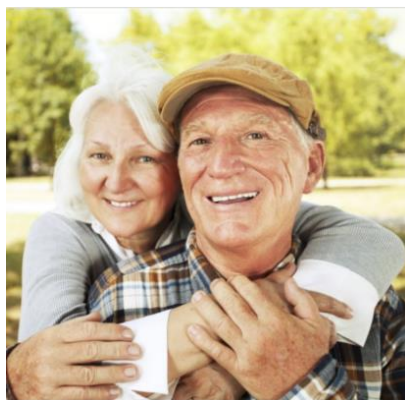
PowerShot SX730 HS

Your Travel Superzoom

40×
OPTICAL
ZOOM



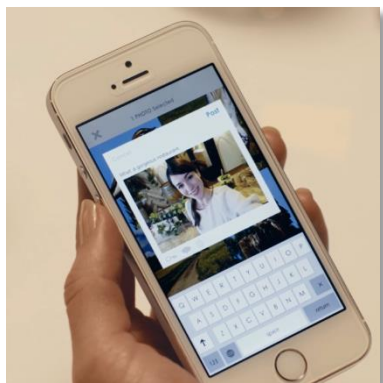
Get closer to your subject and capture more in every frame with the ultra-wide angle 40x optical zoom.



Capture all the action with Zoom Framing Assist, the camera will track and focus on the subject even during telephoto shooting, giving you nice sharp images always.



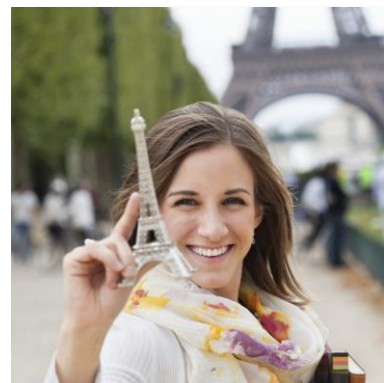
Switch the camera to self-portrait mode and tilt the screen up 180 degrees to capture the perfect selfie. The 24mm ultra-wide lens will allow you to capture more of the background, giving you an ideal self-portrait with the iconic landmark.



With Bluetooth® your camera can now always be connected to your smart phone, making it super easy to share your travel adventures on social.



Record your travels with super steady videos, the camera's inbuilt stabilisation technology will reduce camera shake allowing you to shoot on the go.



Create a travel diary, the camera will automatically compile images and videos giving you a great way to tell your travel story.

no one sees it like you

Canon

PowerShot SX730 HS

Your Travel Superzoom

24mm
WIDE
40x

The 40x optical zoom, 24-960mm equivalent wide angle lens allows you to see into the distance, while the 24mm wide angle lens capture more in your frame making the SX730 HS an all in one compact superzoom camera.

20.3 MEGA
PIXELS
HIGH-SENSITIVITY
CMOS

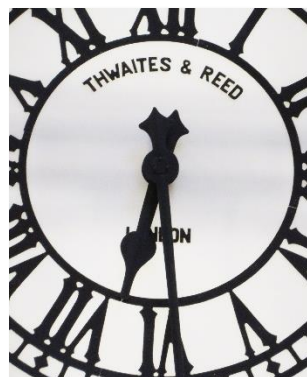
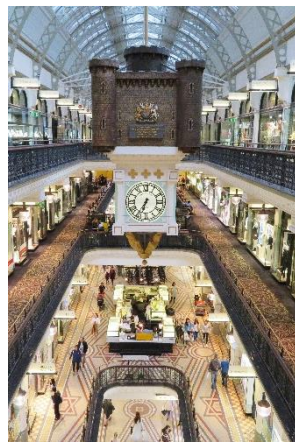
A large 20.3 Megapixel CMOS sensor enables incredible image quality even in low light situations.



Fast, powerful and innovative, DIGIC 6 is Canon's advanced imaging processor. It commands cutting-edge technologies to deliver stunning quality, seamless performance and intuitive operation.



The Canon HS SYSTEM is fuelled by the processing power of DIGIC 6, partnered by an advanced High-Sensitivity CMOS sensor featuring larger pixels to capture more light and deliver sharp, detailed images.



no one sees it like you

Canon

Technical Specifications

IMAGE SENSOR	
Type	1/2.3 type back-illuminated CMOS
Effective Pixels	Approx. 20.3M [14]
Effective / Total Pixels	Approx. 21.1M
IMAGE PROCESSOR	
Type	DIGIC 6 with ISAPS technology
LENS	
Focal Length	4.3 – 172.0 mm (35 mm equivalent: 24 – 960 mm)
Zoom	Optical 40x ZoomPlus 80x Digital approx. 4.0x (with Digital Tele-Converter Approx. 1.6x or 2.0x [1]) Combined approx. 160x
Maximum f/number	f/3.3 – f/6.9
Construction	13 elements in 11 groups (1 Hi-UD lens, 3 UD lenses, 2 double-sided aspherical lenses, 1 single-sided aspherical lens)
Image Stabilisation	Yes (lens shift-type), Approx. 3.0-stop [13], Intelligent IS plus 5-axis Advanced Dynamic IS
FOCUSING	
Type	TTL
AF System/ Points	AiAF (Face Detection / 9-point), 1-point AF (fixed to centre)
AF Modes	Single, Continuous, Servo AF/AE [6], Tracking AF, Size (Normal, Small)
AF Point Selection	Yes
AF Assist Beam	Yes
Manual Focus	Yes, plus MF Peaking
Closest Focusing Distance	1 cm (W) from front of lens in Macro
EXPOSURE CONTROL	
Metering modes	Real-time metering using image sensor (Evaluative, Centre-weighted average, Spot (Centre))
AE Lock	Yes
Exposure Compensation	+/- 2 EV in 1/3 stop increments. i-Contrast for automatic dynamic range correction
ISO sensitivity	AUTO (80-1600), 80, 100, 200, 400, 800, 1600, 3200
SHUTTER	
Speed	1 – 1/3200 sec. (factory default) 15 – 1/3200 sec. (total range – varies by shooting mode)
WHITE BALANCE	
Type	TTL
Settings	Auto (including Face Detection WB), Daylight, Cloudy, Tungsten, Fluorescent, Fluorescent H, Custom. Multi-area WB correction available in Smart Auto
LCD MONITOR	
Monitor	Tilt type 7.5 cm (3.0") LCD (TFT), approx. 922,000 dots.
Coverage	Approx. 100%
Brightness	Adjustable to one of five levels. Quick-bright LCD

FLASH	
Modes	Auto, Manual Flash On / Off, Slow Synchro
Slow Sync Speed	Yes. Fastest speed 1/2000 sec.
Red-Eye Reduction	Yes
Flash Exposure Compensation	+/- 2 EV in 1/3 stop increments. Face Detection FE
Flash Exposure Lock	Yes
Manual Power Adjustment	3 levels with internal flash
Built-in Flash Range	50 cm – 4.0m (W) / 2.0 m (T)
SHOOTING	
Modes	Smart Auto (58 scenes detected), Hybrid Auto, Program AE, Shutter priority AE, Aperture priority AE, Manual, Creative Shot, Self Portrait, Sports, SCN (Portrait, Smooth Skin, Smart Shutter (Smile, Wink Self-Timer, FaceSelf-Timer), Handheld Night Scene, Low Light (5.0 MP), Monochrome, Soft focus, Fish-eye effect, Toy camera effect, Miniature effect, Super vivid, Poster effect, Fireworks), Movie (Standard, Short clip movie)
Photo Effects	My Colors (My Colors Off, Vivid, Neutral, Sepia, Black & White, Positive Film, Lighter Skin Tone, Darker Skin Tone, Vivid Blue, Vivid Green, Vivid Red, Custom Color)
Drive modes	Single, Auto Drive, Continuous, Continuous with AF, Self-Timer All speeds are until memory card becomes full [12]
Continuous Shooting	Approx. 5.9 shots/s with AF: Approx. 4.6 shots/s [3] [4] with Live View: Approx. 4.6 shots/s [3] [4] All speeds are until memory card becomes full [12]
RECORDING PIXELS / COMPRESSION	
Image Size	4:3 - (L) 5184 x 3888, (M1) 3648 x 2736, (M2) 2048 x 1536, (S) 640 x 480 16:9 - (L) 5184 x 2912, (M1) 3648 x 2048, (M2) 1920 x 1080, (S) 640 x 360 3:2 - (L) 5184 x 3456, (M1) 3648 x 2432, (M2) 2048 x 1368, (S) 640 x 424 1:1 - (L) 3888 x 3888, (M1) 2736 x 2736, (M2) 1536 x 1536, (S) 480 x 480 Resize option available in playback
Compression	Superfine, Fine
Movies	(Full HD) 1920 x 1080, 59.94 / 29.97 fps, (HD) 1280 x 720, 29.97 fps, (L) 640 x 480, 29.97 fps
Movie Length	(Full HD & HD) Up to 4 GB or 29 min 59 s [7] (L) Up to 4 GB or 1 hour [4]
FILE TYPES	
Still Image Type	JPEG compression, (Exif 2.3 [Exif Print] compliant) / Design rule for Camera File system, Digital Print Order Format [DPOF] Version 1.1 compliant
Movies	MP4 [Video: MPEG-4 AVC / H.264, Audio: MPEG-4 AAC-LC (stereo)]

no one sees it like you



DIRECT PRINT	
Canon Printers	Canon SELPHY Compact Photo Printers and Canon Inkjet Printers supporting PictBridge (23)
PictBridge	Yes (via USB or Wireless LAN)
OTHER FEATURES	
GPS	GPS via mobile (via Canon Camera Connect app with compatible smart devices via Bluetooth®)
Red-Eye Correction	Yes, during shooting and playback
Intelligent Orientation Sensor	Yes, with Auto Rotate
Histogram	Yes, during playback
Playback zoom	Approx. 2x – 10x
Self Timer	Approx. 2 or 10 sec. or Custom
Menu Languages	English, German, French, Dutch, Danish, Finnish, Italian, Greek, Norwegian, Portuguese, Russian, Swedish, Spanish, Ukrainian, Polish, Czech, Hungarian, Turkish, Simplified Chinese, Chinese (traditional), Japanese, Korean, Thai, Arabic, Romanian, Farsi, Hindi, Malay, Indonesian, Vietnamese, Hebrew
INTERFACE	
Computer	Hi-Speed USB (MTP, PTP) dedicated connector (Mini-B compatible)
Other	HDMI Micro (Type-D) Connector
Computer/Other	Wi-Fi (IEEE802.11b/g/n), (2.4 GHz only), with Dynamic NFC support [11] Bluetooth® (Specification version 4.1, Bluetooth low energy technology) [21] [22]
MEMORY CARD	
Type	SD, SDHC, SDXC (UHS Speed Class 1 compatible)
SUPPORTED OPERATING SYSTEM	
PC & Macintosh	Windows 10 / 8.1 / 8 / 7 SP1 [18] Mac OS X 10.9 / 10.10 / 10.11 / 10.12 For Wi-Fi connection to a PC: Windows 10 / 8.1 / 8 / 7 SP1 Mac OS X 10.9 / 10.10 For Image Transfer Utility: Windows 10 / 8.1 / 8 / 7 SP1 Mac OS X 10.9 / 10.10 / 10.11 / 10.12
SOFTWARE	
Other	CameraWindow DC Map Utility Image Transfer Utility Camera Connect app available on iOS and Android devices

POWER SOURCE	
Batteries	Rechargeable Li-Ion Battery NB-13L (battery and charger supplied)
Battery life	Approx. 250 shots Eco Mode: Approx. 355 shots Playback Mode: Approx. 300 min
A/C Power Supply	Charging via USB available with Compact Power Adapter CA-DC30E [17] or other typical USB charging methods
ACCESSORIES	
Power Supply & Battery Chargers	Compact Power Adapter CA-DC30E Battery Charger CB-2LHE Rechargeable Li-Ion Battery NB-13L
Other	Interface cable IFC-600PCU
PHYSICAL SPECIFICATIONS	
Operating Environment	0 – 40° C, 10 – 90% humidity
Dimensions (WxHxD)	110.1 x 63.8 x 39.9 mm
Weight	Approx. 300 g (including battery and memory card)

All data is based on Canon standard testing methods (according to CIPA Standards) except where indicated.

Subject to change without notice.

[1] Depending on the image size selected.

[3] Under conditions where the flash does not fire.

[4] Depending on memory card speed / capacity / compression setting.

[6] Some settings limit availability.

[7] The following Speed Class memory cards are required for maximum record time: (HD) 1280 x 720 Speed Class 4 or above. (Full HD) 1920 x 1080 Speed Class 6 or above. (iFrame) 1280 x 720 Speed Class 6 or above.

[11] Wi-Fi use may be restricted in certain countries or regions. Wi-Fi support varies by device and region. For more information visit www.canon-europe.com/wirelesscompacts

[12] Sustained continuous shooting function requires compatible SDHC/SDXC UHS Speed Class 1 memory card, total number of frames captured varies depending on shooting subject.

[13] Values at maximum optical focal length. Cameras whose focal length exceeds 350 mm (35 mm equivalent) are measured at 350 mm.

[14] Image processing may cause a decrease in the number of pixels.

[17] Charging via USB requires Interface Cable IFC-600PCU (Sold separately) or similar cable with USB Micro-B to USB type-A connectors. Charging time varies depending on the remaining battery power.

[18] Software applications compatible with Windows 10 in Windows 10 Desktop Mode only

[21] Equipped with Bluetooth® low energy technology. The Bluetooth® word mark and logos are registered trademarks owned by the Bluetooth

[22] Bluetooth connection requires smart device to be equipped with Bluetooth version 4.0 (or later). Also requires smart device to be using operating system iOS 8.4 (or later) or Android 5.0 (or later) as well as latest version of Camera Connect app installed.

[23] Not compatible with following PictBridge compatible SELPHY CP200/ CP220/ CP300/ CP330/ CP400/ CP500/ CP600/ ES1

For more information visit
canon.com.au
canon.co.nz

Canon

no one sees it like you