

Sophos Wireless

The smarter way to simple, secure Wi-Fi

Sophos Wireless provides an easy, effective way to manage and secure your wireless networks. You can use it on its own or as part of your Sophos Central portfolio of cloud-managed security solutions.



Highlights

- ▶ Managed from Sophos Central
- ▶ Superior visibility into wireless health
- ▶ Simple deployment and administration
- ▶ Synchronized Security-ready
- ▶ Enhanced security with rogue AP detection
- ▶ Multi-site management and cloud scalability

Manage all your security on a single platform

Sophos Central is a highly scalable management platform which gives you a single pane of glass for all of your cloud-managed security solutions. Using Sophos Central, you can manage Sophos Wireless on its own, or alongside your Endpoint, Mobile, Email, Encryption and Server Protection.

Superior visibility into wireless health

The Sophos Wireless dashboard puts all the key information about the health of your wireless networks and connecting clients directly at your fingertips. Not only can you see if there are potential threats you need to deal with, such as rogue APs, but you can also quickly identify clients with compliance or connectivity issues.

Simple deployment and administration

Using the step-by-step guidance in our on-boarding wizard, creating networks, registering one or more access points, and adding sites is child's play. Our solution is built to be simple to use, even for non-wireless experts, but that doesn't mean you forfeit functionality. Schedule firmware upgrades to keep your network up to date and benefit from new features and enhancements in every release.

Intelligence connected with Security Heartbeat™

When using our Security Heartbeat™ enabled APX Series access points, you can monitor the health status of any Sophos Central-managed endpoint or mobile device and so automatically restrict web access on trusted Wi-Fi networks. Users with serious compliance issues see a splash screen to alert them to their walled garden status but receive full connectivity again, once health is restored.

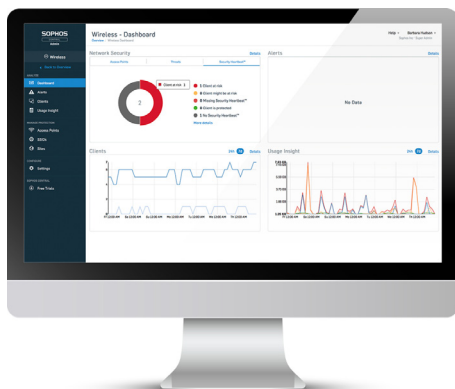
Security enhanced for your trusted Wi-Fi networks

Our Enhanced Rogue AP Detection classifies neighboring Wi-Fi networks to identify threats and prevent attempts to infiltrate an organization via Wi-Fi.

Additionally, you can keep your networks secure by providing controlled internet access and hotspots for visitors, contractors, and other guests on your network. Use enterprise-grade backend authentication for a seamless user experience.

Multi-site management and cloud scalability

Whether you have just one growing network, or multiple sites, extending your Wi-Fi is as simple as adding an additional access point.






Sophos APX Series Access Points – at a glance

The Sophos APX Series is a growing portfolio of Security Heartbeat-enabled access points. With 802.11ac Wave 2 technology, they are custom-built for increased throughput at load and better performance and security.

Further details to help you select the APX model best suited to your environment can be found in the Sophos Access Point Brochure.

Product Matrix

			
MODEL	APX 320	APX 530	APX 740
MANAGEMENT	Sophos Central <i>XG Firewall planned for late 2018</i>		
DEPLOYMENT	Indoor; desktop, wall, or ceiling mount.		
WLAN STANDARDS	802.11 a/b/g/n/ac		
RADIO	1x 2.4 GHz/5 GHz dual-band 1x 5 GHz single band 1x Bluetooth low energy (BLE)	1x 2.4 GHz single band 1x 5 GHz single band 1x Bluetooth low energy (BLE)	
ANTENNAS	2x internal dual-band antenna for Radio-1 2x internal 5 GHz antenna for Radio-2 1x internal 2.4 GHz antenna for BLE	3x internal 2.4 GHz antenna for Radio-1 3x internal 5 GHz antenna for Radio-2 1x internal 2.4 GHz antenna for BLE	4x internal 2.4 GHz antenna for Radio-1 4x internal 5 GHz antenna for Radio-2 1x internal 2.4 GHz antenna for BLE
PERFORMANCE	2x2:2 MU-MIMO	3x3:3 MU-MIMO	4x4:4 MU-MIMO
INTERFACES	1x RJ45 connector console serial port 1x RJ45 10/100/1000 Ethernet w/PoE	1x RJ45 connector console serial port 1x RJ45 10/100/1000 Ethernet port 1x RJ45 10/100/1000 Ethernet w/PoE	
POWER (MAX.)	11.5 W	16.7 W	22.4 W
POWER-OVER-ETHERNET (MIN.)	PoE 802.3af	PoE+ 802.3at	
DIMENSIONS	155x155x38 mm	183x183x39 mm	195x195x43 mm
WEIGHT	0.474 kg	0.922 kg	1.012 kg

We also offer a portfolio of legacy AP Series access points which can additionally be managed through your Sophos SG UTM or XG Firewall. Please check our website under sophos.com/wireless or reach out to your authorized Sophos Partner for more details.

Interested in a free trial?*

Contact us to ask about a 30-day evaluation

* You will need a Sophos Access Point to start your free trial.

United Kingdom and Worldwide Sales
Tel: +44 (0)8447 671131
Email: sales@sophos.com

North American Sales
Toll Free: 1-866-866-2802
Email: nasales@sophos.com

Australia and New Zealand Sales
Tel: +61 2 9409 9100
Email: sales@sophos.com.au

Asia Sales
Tel: +65 62244168
Email: salesasia@sophos.com