

CONNECTED
AND CAPABLE



ThinkCentre M625q Thin Client

Lenovo[™]

ThinkCentre M625q Thin Client



DESIGNED TO MEET YOUR GROWING BUSINESS REQUIREMENTS

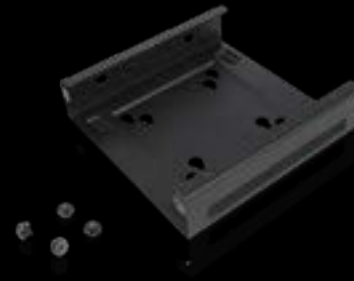
The ThinkCentre M625q Thin Client combines power with energy efficiency. Built with productivity in mind, it's powered by the AMD 7th Gen E2-9000e and is virtualization and Cloud-ready.

- **Performance:** better user experience with up to 50% increase in boot time
- **Responsiveness:** the Thin Client comes with the Lenovo Thin Client Manager – an intuitive and intelligent software that allows users to upgrade or assign user roles quickly and easily – all from one place
- **Productivity:** with features that match a full-fledged PC, users can access files, apps, and services through the cloud, giving businesses more freedom and flexibility
- **Fanless:** the ThinkCentre Thin Client features a fanless design that produces absolutely no noise – perfect for a quiet office or dusty environments

ACCESSORIES

ThinkVision T22i-10 Monitor ▶

Pair your Tiny PC with a ThinkVision monitor for brilliant display, stylish versatility, and fast connectivity.



◀ ThinkCentre Tiny Vesa Mount II

House your Tiny PC in this VESA Mount II for utmost mounting flexibility.

Lenovo Stereo Headset ▶

Headsets with an adjustable headband and boom arm 180° mic.



ThinkCentre M625q Thin Client

PERFORMANCE

Processor

AMD 7th Gen E2-9000e

Memory

1 DDR4 1866Mhz
Maximum 8GB (4/8)

Power Supply

65W 88% Adapter

CONNECTIVITY

Front Ports

2 x USB 3.0 (1 for Fast Charge)
2 x Audio (1 Combo)

Rear Ports

1 x USB 3.0
3 x USB 2.0
DP + DP
2 x Punch Out (Serial/Type-C/VGA+Serial)
1 x LAN

Expansion Slot

1 x M.2 for PCIe /SATASSD
1 x M.2 2230 for WiFi

WiFi

NFA435A QCA9377a 1x1AC+BT4.2 M.2 Combo
RTL8821CE 1x1AC+BT4.2 M.2 Combo
NFA344 QCA6174A 2x2ac+BT4.0 M.2 Combo
RTL8822BE 2x2AC WiFi+BT4.1 M.2 Combo

DESIGN

Form Factor

1L Tiny4

Security

HW TPM2.0

EOU

Open Chassis/HDD/Memory

KB Power on

Yes

APS Protection

N/A

MIL-SPEC

Yes

Modular Design

Yes

Fanless design

Yes

GREEN CERTIFICATIONS

Energy Star 6.1

EPEAT® Gold

UL Green Guard®

FEATURED ACCESSORIES

ThinkVision T22i-10 Monitor (61A9MAR1WW)

The ThinkVision T22i-10 monitor offers a clear display of 1920x1080 resolution with a near edgeless IPS-type screen, providing vivid images from a wide viewing angle. With built-in power and the rich connectivity of VGA, HDMI and DP, T22i-10 meets diverse connection demands. T22i-10 also has 4 USB3.0 ports that offer quick charging for your USB devices. Its full-function stand lifts, tilts, pivots CCW/CW 90 degrees and swivels for ease of use.

ThinkCentre Tiny Vesa Mount II (4XFON03161)

The ThinkCentre Tiny VESA Mount II is a unique design specific to house the Tiny PC. The VESA standard enables this mount to attach to anything that is VESA compatible for the utmost in mounting flexibility. This versatile mounting device can be used separately or combined with other options for secure mounting functionality.

Lenovo Stereo Headset (4XDOK25031)

Using headsets in the office is a key part of the modern workday. VoIP calls are quickly replacing traditional phone services and helping companies save on big telecom costs. Comfortable fit, mono or stereo design, adjustable headband and boom microphone 180° microphone models that fit either the 3.5 mm jack or USB port in your notebook, workstation, or tablet.

RECOMMENDED SERVICES

Premier Support

Provides direct access to skilled and experienced Lenovo technicians offering comprehensive hardware and software support. Gives you a consistent point of contact within Lenovo to ensure that your case resolution is professionally managed from start to finish.

Accidental Damage Protection (ADP)

Prevents the hassle of unexpected repair costs. Provides coverage for non-warranted damage incurred under normal operating conditions, such as minor spills, drops, or damage to the integrated screen.

Warranty Extension (2 to 5 years total duration)

This fixed-term, fixed-cost service helps you accurately budget for PC expenses, protect your valuable investment, and lower the cost of ownership over time.



© 2018 Lenovo. All rights reserved. These products are available while supplies last. Prices shown are subject to change without notice. For any questions concerning price, please contact your Lenovo Account Executive. Lenovo is not responsible for photographic or typographic errors. Warranty: For a copy of applicable warranties, write to: Warranty Information, 500 Park Offices Drive, RTP, NC 27709, Attn: Dept. ZPYA/B600. Lenovo makes no representation or warranty regarding third-party products or services. Trademarks: Lenovo, the Lenovo logo, Rescue and Recovery, ThinkPad, ThinkCentre, ThinkStation, ThinkVantage, and ThinkVision are trademarks or registered trademarks of Lenovo. Microsoft, Windows, and Vista are registered trademarks of Microsoft Corporation. AMD, the AMD Arrow logo, and combinations thereof are trademarks of Advanced Micro Devices, Inc. in the United States and/or other jurisdictions. Other company, product, and service names may be trademarks or service marks of others.