

SMALL YET
MIGHTY



ThinkCentre M625q Tiny

Lenovo™

ThinkCentre M625q Tiny



POWERFUL PERFORMANCE AND GRAPHICS CAPABILITIES IN A COMPACT MACHINE

The ThinkCentre M625q Tiny comes with AMD 7th Gen A9-9420e processors and DDR4 memory that helps carry out intensive business tasks with ease, such as handling large files, multitasking and rich content creation.

- **Performance:** better user experience with up to 50% increase in boot time
- **Responsiveness:** power up in a flash, load files even faster and avoid frustrating delays, with PCIe SSD storage that's up to 80% faster than previous technologies
- **Productivity:** ThinkCentre Tiny supports up to 3 independent displays, with AMD Eyefinity Technology¹

1. AMD Eyefinity technology supports up to three DisplayPort monitors with select AMD PRO A-Series APUs. Supported display quantity, type and resolution vary by APU model and system design; confirm specifications with the system manufacturer before purchase. To enable more than two displays, or multiple displays from a single output, additional hardware such as DisplayPort-ready monitors or DisplayPort 1.2 MST-enabled hubs may be required. A maximum of two active adapters is recommended. See www.amd.com/eyefinityfaq for full details.

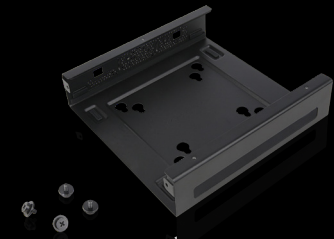
ACCESSORIES

ThinkVision T22i-10 Monitor ▶
Pair your Tiny PC with a ThinkVision monitor for brilliant display, stylish versatility and fast connectivity.



◀ **ThinkCentre Tiny Clamp Bracket Mount Kit**
Efficient and secure monitor mounting solution for your Tiny PC.

ThinkCentre Tiny Vesa Mount II ▶
House your Tiny PC in this VESA Mount II for utmost mounting flexibility.



ThinkCentre M625q Tiny

PERFORMANCE

Processor

AMD 7th Gen A9-9420e

Memory

1 DDR4 1866Mhz
Maximum 8GB (4/8)

Power Supply

65W 88% Adapter

CONNECTIVITY

Front Ports

2 x USB 3.0 (1 for Fast Charge)
2 x Audio (1 Combo)

Rear Ports

1 x USB 3.0
3 x USB 2.0
DP + DP
2 x Punch Out (Serial/Type-C/VGA+Serial)
1 x LAN

Expansion Slot

1 x M.2 for PCIe /SATASSD
1 x M.2 2230 for WiFi

WiFi

NFA344 QCA6174A 2x2ac+BT4.0 M.2 Combo
RTL8822BE 2x2AC WiFi+BT4.1 M.2 Combo

DESIGN

Form Factor

1L Tiny4

Security

HW TPM2.0

EOU

Open Chassis/HDD/Memory

KB Power on

Yes

APS Protection

N/A

MIL-SPEC

Yes

Modular Design

Yes

Fanless design

No

GREEN CERTIFICATIONS

Energy Star 6.1

EPEAT® Gold

UL Green Guard®

FEATURED ACCESSORIES

ThinkVision T22i-10 Monitor (61A9MAR1WW)

The ThinkVision T22i-10 monitor has a black and concise appearance with a full-function ergonomic stand. It offers a clear display of 1920x1080 resolution with a near edgeless IPS-type screen, providing vivid images from a wide viewing angle. With built-in power and the rich connectivity of VGA, HDMI and DP, T22i-10 meets diverse connection demands. T22i-10 also has

4 USB3.0 ports that offer quick charging for your USB devices. Its full-function stand lifts, tilts, pivots CCW/CW 90° and swivels for ease of use.

ThinkCentre Tiny Vesa Mount II (4XFON03161)

The ThinkCentre Tiny VESA Mount II is a unique design specific to house the Tiny PC while featuring the universal VESA mount configuration. The VESA standard enables this mount to attach to anything that is VESA compatible for the utmost in mounting flexibility. This versatile mounting device can be used separately or combined with other options for secure mounting functionality.

ThinkCentre Tiny Clamp Bracket Mount Kit (4XFON82412)

ThinkCentre Tiny Clamp Bracket Mounting Kit II is a new mounting solution that provides an efficient and secure monitor mounting solution for your Tiny PC.

RECOMMENDED SERVICES

Premier Support

Provides direct access to skilled and experienced Lenovo technicians offering comprehensive hardware and software support. Gives you a consistent point of contact within Lenovo to ensure that your case resolution is professionally managed from start to finish.

Accidental Damage Protection (ADP)

Prevents the hassle of unexpected repair costs. Provides coverage for non-warranted damage incurred under normal operating conditions, such as minor spills, drops, or damage to the integrated screen.

Warranty Extension (2 to 5 years total duration)

This fixed-term, fixed-cost service helps you accurately budget for PC expenses, protect your valuable investment, and lower the cost of ownership over time.



© 2018 Lenovo. All rights reserved. These products are available while supplies last. Prices shown are subject to change without notice. For any questions concerning price, please contact your Lenovo Account Executive. Lenovo is not responsible for photographic or typographic errors. Warranty: For a copy of applicable warranties, write to: Warranty Information, 500 Park Offices Drive, RTP, NC 27709, Attn: Dept. ZPYA/B600. Lenovo makes no representation or warranty regarding third-party products or services. Trademarks: Lenovo, the Lenovo logo, Rescue and Recovery, ThinkPad, ThinkCentre, ThinkStation, ThinkVantage, and ThinkVision are trademarks or registered trademarks of Lenovo. Microsoft, Windows, and Vista are registered trademarks of Microsoft Corporation. AMD, the AMD Arrow logo, and combinations thereof are trademarks of Advanced Micro Devices, Inc. in the United States and/or other jurisdictions. Other company, product, and service names may be trademarks or service marks of others.