



AOPEN

Bright Ideas Connected

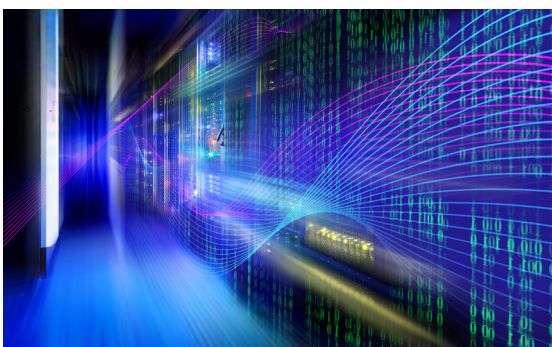
Digital Engine®



Redefining high-end possibilities **DE7400**

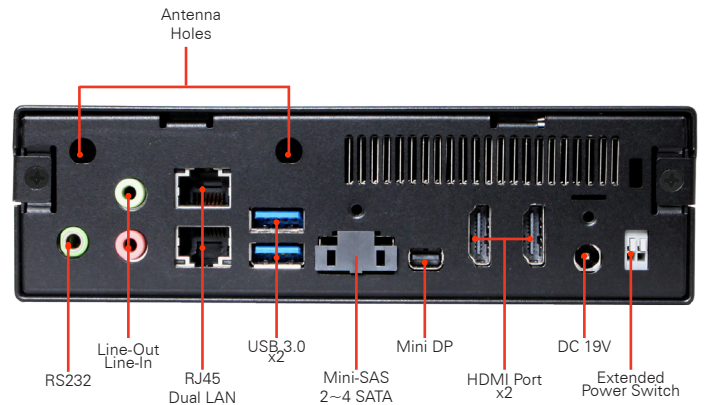
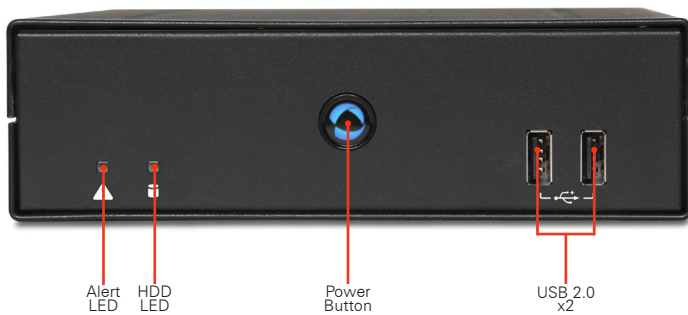


The DE7400 is an innovative X86 based powerhouse with new levels of graphics, speed and possibilities. The small size of the DE7400 combined with the Skylake based interior makes it one of the most powerful and flexible system available to date. With the Intel® Skylake CPU, two HDMI ports and one Mini DP it is possible to drive three UHD screens (4K) at the same time. Therefore this DE7400 fears no challenge in serving as a media player for extreme Digital Signage, Surveillance client or any other situation.



The DE7400 features:

- + Intel Skylake
- + HD graphics 530
- + Up to 32GB DDR4
- + Mini SAS connector to connect 2 SATA devices
- + 2 HDMI and 1 mDP to drive 3 UHD screens



| Model name | | DE7400 |
|------------------|------------------|--|
| Feature | | A computing device with new levels of flexibility, speed and power |
| Housing Material | | SECC/ Aluminum |
| Chassis Color | | Black |
| Dimension | W x H x D (mm) | 166 x 48 x 157 mm |
| | W x H x D (inch) | 6.54 x 1.89 x 6.18 inch |
| Volume (liters) | | 1.25 L |
| CPU | Type | Supports Intel® Skylake-H mobile i3, i5, i7 |
| Graphic | | Intel HD Graphics P530 series (GT2) |
| LAN | | Intel GbE LAN Controller Dual Lan Ports |
| Memory | Channels | Dual Channel |
| | Type | DDR4 SO-DIMM 2133 x 2 |
| | Max Memory | 32G |
| Expansion | M.2 | x 1 (2242) x 1 (2230) |
| | Mini-Card (HL) | x 1 |
| Storage | 2.5" SATA HDD | x 1 |
| | External SATA | x 2 |

| Rear Panel IO | RS232 | x 1 |
|-----------------------|-----------------------|--|
| | Line in | x 1 |
| | Line out | x 1 |
| | RJ45 LAN | x 2 |
| | USB 3.0 | x 2 |
| | Mini-SAS | x 1 |
| | Mini DP | x 1 |
| | HDMI Port | x 2 |
| | DC 19V/12V | x 1 |
| | Extended Power Switch | x 1 |
| | Antenna Holes | x 2 |
| | Front Panel | USB 2.0 |
| Watchdog Timer | | 1 sec ~ 255 sec |
| Environment | | |
| MTBF | | 50,000hrs |
| Operating Temperature | | 0°C ~40°C (32°F ~ 104°F) |
| Storage Temperature | | -20 ~ 60°C (-4 ~ 140°F) |
| Relative Humidity | | 90% RH |
| Operating Vibration | | 2 Gms,Random,5~500Hz,X,Y,Z 3 Axes,0.5hr/Axis |

Supports:



*Accessories available on demand



The specifications depicted may be subject to change without prior notice. All trademarks are copyright of their respective owners. © AOPEN Inc.