

OUR AGILITY  
ENABLES  
YOUR AGILITY

ThinkPad L380

Lenovo™



# ThinkPad<sup>®</sup> L380



## ESSENTIAL VALUE MEETS ENTERPRISE-READY.

You think big. You have to—there's a lot riding on every decision. So staying calm and in control is the key to your success. That's why the ThinkPad<sup>®</sup> L380 is the sensible enterprise choice. Combining the latest Intel<sup>®</sup> Core™ i7 processors and high-performing memory and storage, this lightweight portable laptop delivers all your must-haves. Confidently multitask and collaborate with Intel<sup>®</sup> connectivity, more standard ports, and integrated Intel<sup>®</sup> HD Graphics 620. And because the L380 also provides vPro™ remote manageability, Mil-Spec durability, and long battery life, business stays under control and you maintain your cool.

### FEATURED ACCESSORIES

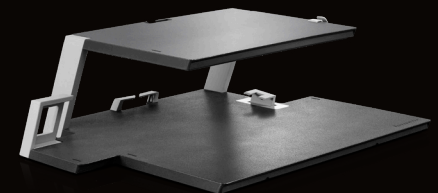
ThinkPad USB-C Dock ▶



◀ Lenovo Professional Wireless Keyboard and Mouse Combo



Lenovo Dual Platform ▶  
Notebook and Monitor Stand



Lenovo<sup>™</sup>

# Lenovo™ ThinkPad® L380

## PERFORMANCE

### Processor

Up to Intel® Core™ i7

### Operating System

Up to Windows® 10 Pro

### Graphics

Integrated Intel® HD Graphics 620

### Camera

720p HD

### Memory

Up to 32GB DDR4 2400MHz  
2 DIMM

### Storage

Up to 512GB PCIe M.2 SSD

### Battery

Up to 12 hours\*, 45Wh  
RapidCharge (Type-C 65W adapter)

\*Based on testing with MobileMark 2014. Battery life varies significantly with settings, usage, and other factors.

### Audio

2 x 2W stereo, Lync-certified, dual-array mic

### Security

Touch FPR  
Discrete TPM 2.0  
Kensington® lock slot

## CONNECTIVITY

### Input/Output Ports

2 x USB 3.0 Type-C  
2 x USB 3.0  
HDMI

### WLAN

Up to Intel® Dual Band AC 8265 2x2 AC + Bluetooth®

### NFC

Yes (optional)

### Docking

USB 3.0 dock; Type-C dock

## DESIGN

### Display

13.3" IPS FHD (1920 x 1080) antiglare touch

### Dimensions (W x D x H)

mm: 322 x 224.2 x 18.8  
inches: 12.67 x 8.82 x 0.74

### Weight

1.46 kg / 3.22 lbs

### Colors

Black, Silver

## FEATURED ACCESSORIES

### ThinkPad USB-C Dock (40A90090US)

This universal docking solution ensures a high-performance workstation experience. Meet all your productivity needs, including video, data, and wired network, all while delivering continuous power to your laptop via a robust USB Type-C port.

### Lenovo Professional Wireless Keyboard and Mouse Combo (4X30H56796)

Get responsive quiet keys and a premium typing experience with this wireless full-size keyboard and mouse combination. A slim three-zone keyboard with number pad and one-touch dedicated media keys put the controls you use most at your fingertips, and the ergonomic mouse supports all-day use.

### Lenovo Dual Platform Notebook and Monitor Stand (4XF0L37598)

Clear the clutter and stay organized by integrating your laptop, dock, and monitor into one convenient workspace. Raise your monitor to ergonomic viewing height and keep cables out of your way with back clips.

## RECOMMENDED SERVICES

Lenovo™ offers a comprehensive portfolio of services to support and protect your ThinkPad® investment—so you can focus on your business, not your IT.

### Premier Support

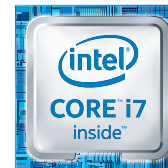
Bypass phone menus and scripted troubleshooting to access advanced-level technicians with the expertise needed to quickly diagnose and solve problems.

### Accidental Damage Protection (ADP)

Protect your investment from operational or structural damage caused by common accidents like drops, spills, or electrical surges. This fixed-cost, fixed-term protection plan minimizes unexpected repairs for predictable budgeting and provides significant savings relative to the cost of non-covered repairs.

### Warranty Extensions

Get a fixed-term, fixed-price service solution to match the lifecycle of your device and fit within your budget. Purchasing an extension at the time of a system purchase saves 15-30% over the price of purchasing it post-warranty.



Powered by Intel®  
Core™ i7 processors.  
Intel Inside®. Powerful  
Productivity Outside.

© 2017 Lenovo. All rights reserved. These products are available while supplies last. Prices shown are subject to change without notice. For any questions concerning price, please contact your Lenovo Account Executive. Lenovo is not responsible for photographic or typographic errors. Warranty: For a copy of applicable warranties, write to: Warranty Information, 500 Park Offices Drive, RTP, NC 27709, Attn: Dept. ZPYA/B600. Lenovo makes no representation or warranty regarding third-party products or services. Trademarks: Lenovo, the Lenovo logo, Rescue and Recovery, ThinkPad, ThinkCentre, ThinkStation, ThinkVantage, and ThinkVision are trademarks or registered trademarks of Lenovo. Microsoft, Windows, and Vista are registered trademarks of Microsoft Corporation. Intel, the Intel logo, Intel Inside, Intel Core, and Core Inside are trademarks of Intel Corporation in the U.S. and/or other countries. Other company, product, and service names may be trademarks or service marks of others.