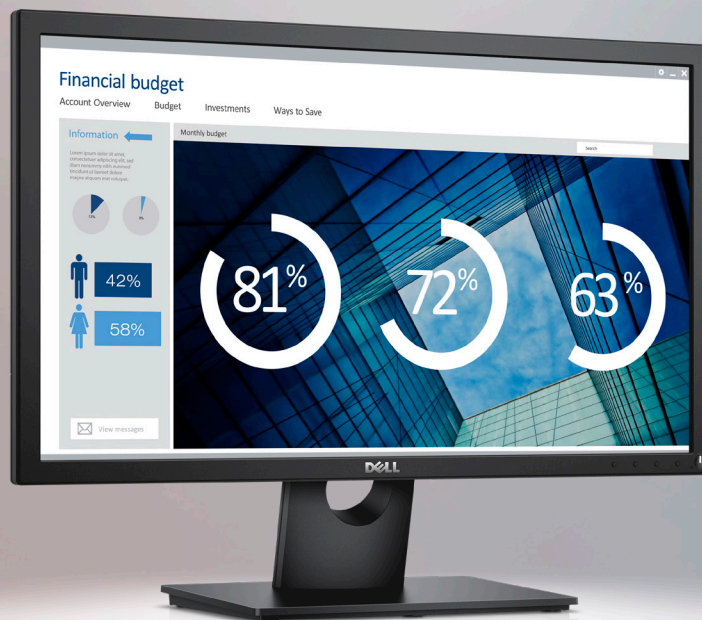




# Essential features. Essential value.

DELL 23 MONITOR | E2318H



## ESSENTIAL FEATURES

Discover the important monitor features you need to drive productivity everyday.



## OUTSTANDING USABILITY

Count on our stringent quality standards that help ensure dependable performance helping minimize workforce downtime.



## ECO-ELEGANT DESIGN

Eco-friendly chassis, made of more than 25% post-consumer recycled materials.



## TRUSTED RELIABILITY

As the world's #1 monitor brand\*, we take pride in our unyielding commitment to quality and the utmost satisfaction of our customers.

# Affordable, reliable, eco-friendly



## ESSENTIAL FEATURES

**Screen performance:** View your applications, spreadsheets and more on 23 inches of 1920x1080 Full HD clarity with 16.7 million colors.

**Work comfortably:** Optimize eye comfort and reduce harmful blue light emissions with ComfortView<sup>1</sup> and a flicker-free screen.

**Brilliant at every angle:** See consistent colors across a wide 178°/178° viewing angle.



## OUTSTANDING USABILITY

**Convenient controls:** Easily access buttons for power, brightness, contrast and customizable preset modes on the monitor's front panel.

**Versatility included:** Get the flexibility to configure your monitor with various mounts and stands for evolving office requirements.

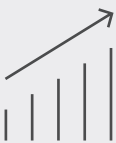
**Tilt at will:** Work comfortably by tilting the monitor 5° forward or 21° backward.



## ECO-ELEGANT DESIGN

**Designed with the environment in mind:** BFR/PVC-free monitor (except external cables) with arsenic-free glass and mercury-free LED panel with more than 25% post consumer plastics in its chassis.

**ENERGY STAR®, EPEAT® registered where applicable<sup>2</sup> and TCO Certified:** Meets all regulatory and environmental standards.



## DELL DISPLAY MANAGER

**More ways to multitask:** Work conveniently across multiple screens and select from predefined templates with the **Easy Arrange** feature on Dell Display Manager software. Quickly tile and arrange your applications and get back to work faster with **Auto-restore**, a feature that remembers where you left off.

**Easily optimize your view:** Automode easily configures display settings for a great front of screen experience.

**Manage your display inventory:** Generate an asset management report to tag display ID and settings within your business environment.



THANK YOU FOR  
MAKING DELL  
MONITORS  
#1 WORLDWIDE\*

**Minimize downtime:** Your monitor comes with a 3-year Advanced Exchange Service<sup>3</sup> so that if a replacement becomes necessary, it will be shipped to you the next business day during your 3-year Limited Hardware Warranty.<sup>4</sup>

**Get a higher level of support:** Upgrade to 24x7, in-region technical phone support from qualified engineers with Dell ProSupport option.<sup>5</sup>

# Features & Technical Specifications

## Monitor

Diagonal Viewing Size	Dell 23 Monitor – E2318H
Active Display Area	58.42 cm (23.0 Inches)
Horizontal	509.18 mm (20.05 inches)
Vertical	286.42 mm (11.28 inches)
Maximum Preset Resolution	1920 x 1080 at 60Hz
Aspect Ratio	16:9
Pixel Pitch	0.265 mm x 0.265 mm
Pixels Per Inch (PPI)	96
Brightness	250 cd/m <sup>2</sup> (typical)
Color Support	Color Gamut (typical): 85% (CIE 1976), 72% (CIE 1931) Color Depth: 16.7 million colors
Contrast Ratio	1000:1 (typical)
Viewing Angle	178° x 178°
Response Time	5 ms (gray to gray - fast mode) (typical) 8 ms (gray to gray - normal mode) (typical)
Panel Type	In-Plane Switching (IPS) technology, antiglare with 3H hardness
Backlight Technology	LED
Dell Display Manager	Yes
Optional Soundbar	AC511

## Connectivity

Connectors	1 x DisplayPort 1.2, 1 x VGA
------------	------------------------------

## Design Features

Adjustability	Tilt (-5° to 21°)
Security	Security lock slot (security lock not included), Anti-theft stand lock slot (to panel)
Flat Panel Mount Interface	VESA mounting support (wall mount sold separately) 100 mm x 100 mm

## Power

AC input voltage/frequency/current	100 to 240 VAC / 50 or 60 Hz ± 3Hz / 1.0 A (typical)
Power Consumption (Operational)	20W
Power Consumption (ENERGY STAR®)	54 kWh
Power Consumption Stand by / Sleep	Less than 0.3 W

## Dimensions (with stand)

Height	415.0 mm (16.34 inches)
Width	544.8 mm (21.45 inches)
Depth	180.0 mm (7.09 inches)

## Weight

Weight (panel only – no stand)	3.17 kg (6.99 lb)
Weight (with stand)	3.89 kg (8.58 lb)
Shipping Weight	5.47 kg (12.06 lb)

## Standard Service Plan

3 Years Advanced Exchange Service<sup>3</sup> & 3 Years Limited Hardware Warranty<sup>4</sup>

## Optional Service Plan

Dell ProSupport<sup>5</sup>

## Environmental Compliance

ENERGY STAR®, EPEAT® registered where applicable<sup>2</sup>, TCO Certified Displays, RoHS Compliant

## What's in the box?

### Components

- Monitor
- Stand riser
- Stand base
- VESA screw cover

### Cables

- 1 x DisplayPort cable
- Power cable

### Documentation

- Quick Setup Guide
- Safety and regulatory information
- Drivers and documentation media

# Adjustability and connectivity

DELL 23 MONITOR | E2318H

Easily adjust the panel to your preferred viewing position.



Back view - Cable management slot



Tilt

## Connectivity



- 1 AC power
- 2 HDMI
- 3 VGA
- 4 Dell soundbar mounting slots

## RECOMMENDED ACCESSORIES



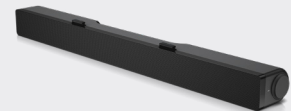
### DELL WIRELESS KEYBOARD AND MOUSE | KM636

Get the freedom of wireless computing with this keyboard and mouse bundle by connecting the USB dongle to your PC.



### DELL DOCKING STATION (USB 3.0) D3100

Connect to any PC to this USB 3.0 universal docking station and display Ultra HD 4K resolution.



### DELL SOUNDBAR - AC511

Get stereo surround sound with the Dell soundbar. Snap it snugly onto the bottom of the monitor to enjoy high-quality audio.

\* Dell monitors are #1 Worldwide for 6 consecutive years (2013 to 2018)! Source: IDC Worldwide Quarterly PC Monitor Tracker, Q4 2018.

1 ComfortView, a feature that reduces up to 60% of harmful blue light emissions, help optimize eye comfort over extended viewing periods.\*\*

Disclaimer - \*\*Available on select Dell E, P and U series monitors. Based on Dell internal analysis, August 2018. Actual blue light reduction will vary by model.

2 EPEAT registered where applicable. EPEAT registration varies by country. See [www.epeat.net](http://www.epeat.net) for registration status by country.

3 Advanced Exchange: Dell will send you a replacement monitor the next business day in most cases, if deemed necessary after phone/online diagnosis. Shipping times may vary by location and for monitors 55" and above. Fee charged for failure to return defective unit. See [dell.com/servicecontracts/global](http://dell.com/servicecontracts/global).

4 For a copy of the Limited Hardware Warranty, write to Dell USA LP, Attn: Warranties, One Dell Way, Round Rock, TX 78682 or see [dell.com/warranty](http://dell.com/warranty).

5 Availability varies, please visit [www.dell.com/support](http://www.dell.com/support) for details.

[Dell.com/monitors](http://Dell.com/monitors) Product availability varies by country. Please contact your Dell representative for more information.

© 2019 Dell. All rights reserved.

Trademarks or trade names may be used in this document to refer to either the entities claiming the marks and names of their products. Dell disclaims proprietary interest in the marks and names of others. Reproduction in any manner whatsoever without express written permission from Dell is strictly forbidden.

