

EF 85MM f/1.4L IS USM

ALLURING PORTRAITS

Beautiful smooth background blur combined with the advantages of Image Stabilizer, the EF 85mm f/1.4L IS USM is perfect for portraits and low light shooting

SUPER SHALLOW DEPTH OF FIELD

f/1.4 maximum aperture and a 9-bladed circular aperture deliver beautifully smooth background blur

SHARP HANDHELD PORTRAITS

Built-in Image Stabilizer combined with large f/1.4 maximum aperture enables handheld portrait shooting in low light situations and indoors

WHISPER SILENT AUTO FOCUS

Be on top of rapid moving scenes with the ring-type ultrasonic motor that drives extremely fast, near silent auto focus.

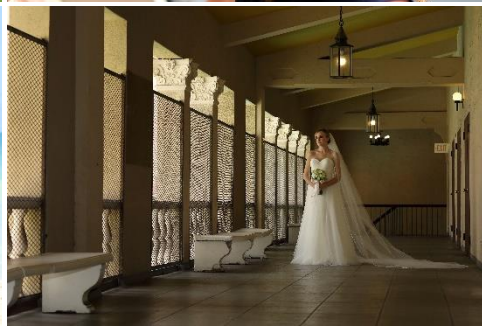
SHOOT INTO THE LIGHT WITH CONFIDENCE

Canon's multi-layered Air Sphere Coating (ASC) protecting against flare, ghosting and reduced contrast.



no one sees it like you

Canon



TECHNICAL SPECIFICATIONS

EF 85mm f/1.4L IS USM

Optical Features/Specifications

Image size	-
35mm film equivalent focal length (mm)	-
Angle of view (horzntl, vertl, diagnl)	24°, 16°, 28° 30'
Lens construction (elements/groups)	14/10
No. of diaphragm blades	9
Minimum aperture	22
Closest focussing distance (m)	0.85
Maximum magnification (x)	0.12
Distance Information	Yes
Image stabilizer	4 Stops
AF actuator	Ring USM ⁴

Physical Specifications

Dust/moisture resistance	Yes
Filter diameter (mm)	77
Max. diameter x length (mm)	88.6 x 105.4
Weight (g)	950

Accessories

Lens cap	E-77 II
Lens hood	ET-83E
Lens case/pouch	LP1219
Rear cap	Lens Dust Cap E
Magnification with Extension Tube EF12 II	0.26-0.15
Magnification with Extension Tube EF25 II	0.43-0.33
Extender Compatibility	Not Compatible

For more information visit
canon.com.au
canon.co.nz

no one sees it like you

Canon