



Kingsley Open Desking System





Maximum Versatility

With office layouts, one size never fits all. The Kingsley Open Desking System has a modular design that maximizes versatility and adaptability. Configure an open office environment conducive to both individual tasks and collaborative work that can be expanded as your business grows. A variety of components combine to create an attractive, functional work space with flexible metal storage options tailored to your individual organizing needs.



Flexible Configurations

The Kingsley Open Desking System can be configured to fit within the space and needs of any office. Rearranging workspaces as your business changes and expands is easy due to simple assembly and modular component-based design.

Metal Storage Solutions

This open desking system features a large selection of metal storage components constructed of high-quality steel and designed for optimal office organization. The system meets or exceeds ANSI/BIFMA performance standards.

Individual & Team Setups

Open desking is versatile, allowing users to customize their workspace and make it their own. A range of components enables users to easily configure a workspace that supports individual, shared and team work environments.

Sample Open Desking Configurations



Simple Assembly
Work surfaces have pre-drilled holes for easy assembly.

Extra Seating
Cushions add warm texture to your workspace while creating seating for impromptu meetings.

Metal Storage Solutions
A large selection of steel storage components provide solutions for organizing every type of work space.

Individual Desk

- Tower
- Work Surface, 59.06"W x 23.62"D
- O-Leg, 23.37"D x 28.88"H
- O-Leg, 23.37"D x 7"H
- Sliding Door Lateral Credenza
- 2-Drawer Lateral Credenza
- Credenza Seat Cushion

Paint: Black
Laminate: Weathered Charcoal
Fabric: Chinchilla

Team Work Station

- 4 Work Surfaces, 59.06"W x 23.62"D
- 8 O-Legs, (23.37"D x 28.88"H)
- 4 Box/File Pedestals
- 4 Pedestal Seat Cushions

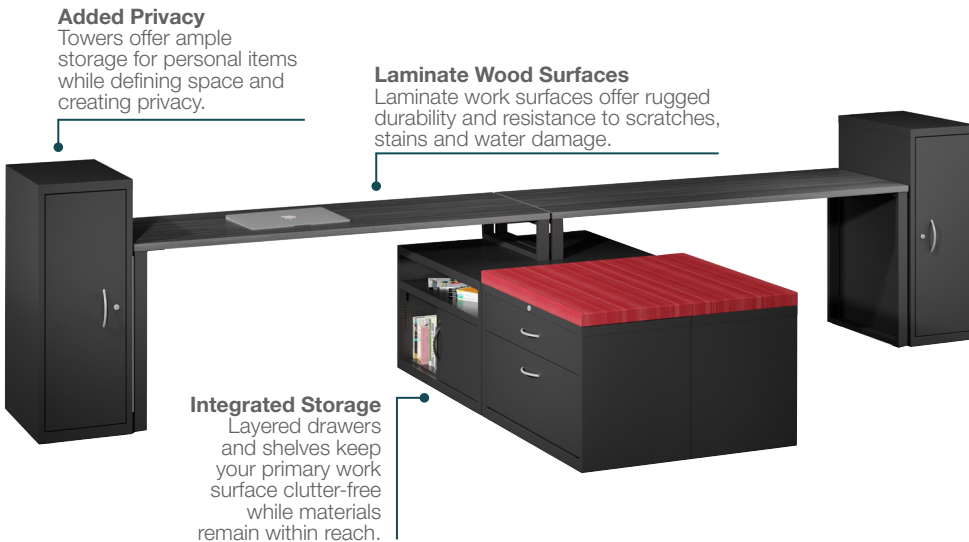
Paint: Black
Laminate: Gray Elm
Fabric: Heat Wave



Durable Design
All work surfaces feature pre-installed cross braces for added strength and stability.

Modern Aesthetic
Open o-legs make a small space appear larger and add a modern design element to your workspace.

Mobile Storage
Pedestals tuck under desks for convenient storage. Hidden casters add mobility and cushions create extra seating.



Added Privacy
Towers offer ample storage for personal items while defining space and creating privacy.

Laminate Wood Surfaces
Laminate work surfaces offer rugged durability and resistance to scratches, stains and water damage.

Integrated Storage
Layered drawers and shelves keep your primary work surface clutter-free while materials remain within reach.

Shared Work Station

- 2 Towers
- 2 Work Surfaces, 70.87"W x 23.62"D
- 2 O-Legs, 23.37"D x 28.88"H
- 2 O-Legs, 23.37"D x 7"H
- 2 Sliding Door Lateral Credenzas
- 2 2-Drawer Lateral Credenzas
- 2 Credenza Seat Cushions

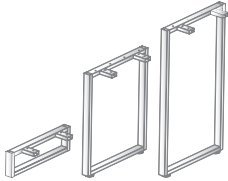
Paint: Charcoal
Laminate: Weathered Charcoal
Fabric: Heat Wave

Work Surfaces



- | | Weathered Charcoal | Gray Elm |
|-----------------------|--------------------|-----------|
| • 70.87" W x 29.53" D | LLR 59674 | LLR 59675 |
| • 70.87" W x 23.62" D | LLR 59668 | LLR 59669 |
| • 59.06" W x 29.53" D | LLR 59672 | LLR 59673 |
| • 59.06" W x 23.62" D | LLR 59666 | LLR 59667 |
| • 47.24" W x 23.62" D | LLR 59664 | LLR 59665 |

O-Leg Supports



- | | Black | Charcoal |
|---------------------|-----------|-----------|
| • 29.28"D x 28.88"H | LLR 59678 | LLR 59679 |
| • 29.28"D x 7"H | LLR 59682 | LLR 59683 |
| • 29.28"D x 40.25"H | LLR 59686 | LLR 59687 |
| • 23.37"D x 28.88"H | LLR 59676 | LLR 59677 |
| • 23.37"D x 7"H | LLR 59680 | LLR 59681 |
| • 23.37"D x 40.25"H | LLR 59684 | LLR 59685 |

Box/File Pedestal



- | | Black | Charcoal |
|------------------------------|-----------|-----------|
| • 15"W x 19 7/8"D x 21 3/4"H | LLR 79133 | LLR 79134 |

Box/Box/File Pedestal



- | | Black | Charcoal |
|------------------------------|-----------|-----------|
| • 15"W x 22 7/8"D x 27 3/4"H | LLR 79129 | LLR 79130 |

File/File Pedestal



- | | Black | Charcoal |
|------------------------------|-----------|-----------|
| • 15"W x 22 7/8"D x 27 3/4"H | LLR 79131 | LLR 79132 |

Paints



Black

Charcoal

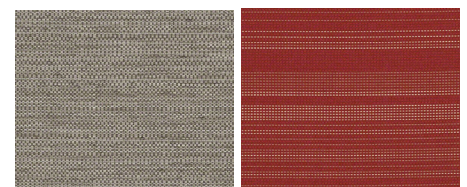
Laminates



Weathered Charcoal

Gray Elm

Fabrics



Chinchilla

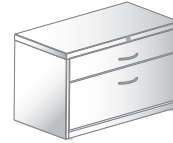
Heat Wave

Tower



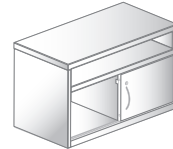
- | | Black | Charcoal |
|---------------------------|-----------|-----------|
| • 15"W x 23.6"D x 40.25"H | LLR 59670 | LLR 59671 |

2-Drawer Credenza



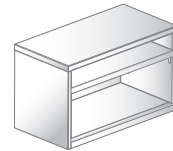
- | | Black | Charcoal |
|--------------------------|-----------|-----------|
| • 36"W x 18 5/8"D x 22"H | LLR 60936 | LLR 60937 |

Sliding Door Credenza



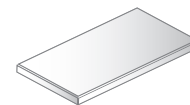
- | | Black | Charcoal |
|--------------------------|-----------|-----------|
| • 36"W x 18 5/8"D x 22"H | LLR 60938 | LLR 60939 |

Open Credenza



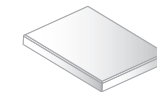
- | | Black | Charcoal |
|--------------------------|-----------|-----------|
| • 36"W x 18 5/8"D x 22"H | LLR 60940 | LLR 60941 |

Credenza Seat Cushion



- | | Heat Wave | Chinchilla |
|-------------------------|-----------|------------|
| • 36"W x 18 5/8"D x 2"H | LLR 60942 | LLR 60943 |

Pedestal Seat Cushion



- | | Heat Wave | Chinchilla |
|-------------------------|-----------|------------|
| • 15"W x 19 5/8"D x 2"H | LLR 79137 | LLR 79138 |

