

## specifications

**Overall Dimensions**  
26.4" x 24.8" x 37.4-40.9"  
(W x D x H)

**Seat**  
21" x 20" (W x D)

**Back**  
19.3" x 20.5" (W x H)

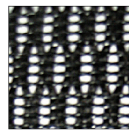
**Seat Height**  
19.3" (at lowest point)  
22.8" (at highest point)

**Weight**  
58 lbs

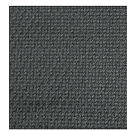
**Cube**  
6.1

## standard colors

**black mesh**  
PM01



**black fabric**  
5806



mid back  
multi-function  
w/seat slider

MFST5455

option

polished  
steel base  
S330C



## features

### Tilt Tension Control

Recline rate adapts to weight of user.

### Center-Tilt

Chair tilts from a point under the center of the seat allowing user to rock back and forth. Tension adjustable.

### Tilt Lock

Locks out tilt function.

### Back Angle Adjustment

Sets back angle for personalized comfort in reclined position.

### Seat Height Adjustment

Sets seat height to desired position relative to floor.

### Seat Depth Adjustment

Adjusts seat depth relative to back.

### Adjustable Lumbar Pad

### Waterfall Seat

Front of cushion slopes to reduce pressure on the back of the knees.

### Forward Seat Tilt

Changes angle of seat to enable proper ergonomic posture while using computer keyboard.

### Width Adjustable Arms

Adjusts arms in or out for proper ergonomic positioning.

### Arm Height Adjustment

Adjusts arm up or down for proper ergonomic positioning while seated.

### Seat Angle Adjustment

Seat angle will lock in any position from front to back.

### 2.8" Ratchet Back Height Adjustment

Backrest easily adjusts up or down relative to seat for personalized lumbar region support and comfort.

**eurotech**  
a raynor group company

**fabrix** | custom  
upholstery

**1.800.637.0005**

email: [customerservice@raynorgroup.com](mailto:customerservice@raynorgroup.com)  
catalog requests: [literature@raynorgroup.com](mailto:literature@raynorgroup.com)