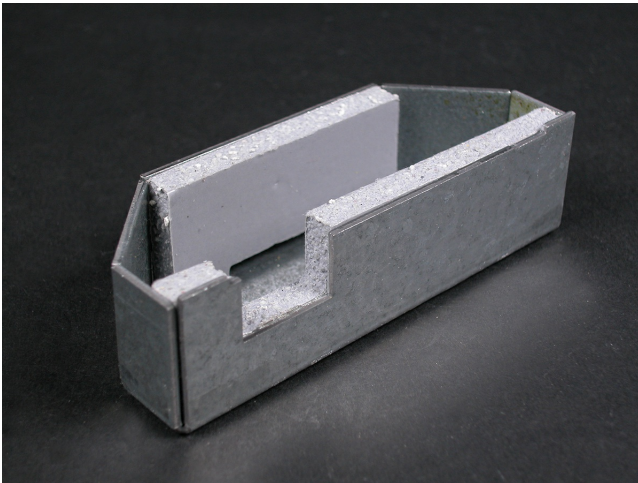




Wiremold  
Evolution 6AT Series Bottom Housing Assembly  
Part No. 5BLH



Designed for retrofit and new construction, Evolution Series Poke-Thru devices provide convenient access to power, communications, and audio/video services recessed below floor level - providing maximum device protection. With three gangs of capacity that allow you to configure services for the needs of your space, services can be placed in any location within the unit. The low-profile durable metal covers are available in seven finishes, designed to match any space. The cover also features sliding doors that allow cables to neatly egress from the unit, protecting cables while reducing tripping hazards. Evolution Series Poke-Thru devices are the perfect fit for meeting and training rooms, classrooms, healthcare facilities or commercial buildings with open-space architecture.

## Features & Benefits

Half-gang blank housing assembly. Designed to blank off compartment when no devices are used. For use on side compartments only.

## Specifications

### General Info

Product Line	Wiremold	UPC Number	786564060338
Country Of Origin	United States	Construction	Not Assembled

Application Sector	Commercial	Standard	cULus Listed Metallic Outlet Boxes: File E2961 Guide QCIT. cULus Listed Nonmetallic Outlet Boxes & Fittings Classified for Fire Resistance: File R8209 Guide CEYY. Meets Article 300.21, 300.22(C) & 314 of NEC.
--------------------	------------	----------	--

Type	Poke-Thru
------	-----------

### Listing Agencies / 3rd Party Agencies

cULus ListingNumber	E2961	cULus Listed	Yes
---------------------	-------	--------------	-----

### Additional Information

---

RoHS Conformant

Yes

Product Environmental Profile Yes

---