

Product Data Sheet

DCX3000 Digital KVM Switching System



DCX3000



DCX3000-DVR



DCX3000-DVT



DCX3000-DPT

Overview

Share up to 23 computers with multiple users via standard CATx cabling.

The DCX3000 system contains three components:

1. the central switching unit (30-Port Digital KVM Matrix Switch, DCX3000),
2. the receiver unit (DCX3000-DVR), and
3. server access modules (DVI: DCX3000-DVT, DisplayPort: DCX3000-DPT).

The interface-powered Server Access Modules (SAMs) extend DVI or DisplayPort signals and USB over standard CATx cabling from individual servers to the central switching unit and the receivers connect end-user stations to the central switching unit.

- A DCX3000 SAM module links to each computer. Two types of SAM modules are available: DVI-D and USB, or DisplayPort and USB.
- The peripherals (keyboard, display, etc.) connect to DCX3000 remote modules.

Features

- Designed for small- to medium-sized applications uncompressed video signals.
- Fast, reliable switching of digital KVM, HD video, audio, and USB.
- Small form factor, interface-powered Server Access Modules (SAMs) extend DVI or DisplayPort signals and USB over standard CATx cabling.

Ordering Information

Item	Code
DCX3000 Digital KVM Matrix Switch	DCX3000
DCX3000 Digital KVM Remote Station	DCX3000-DVR
DCX3000 Server Access Module	
DVI + USB	DCX3000-DVT
DisplayPort + USB	DCX3000-DPT

DCX3000 Digital KVM Switching System

DCX3000 Digital KVM Matrix Switch - 30-Port (DCX3000) Specifications



DCX3000,
front angled view



DCX3000,
rear view

Specifications for DCX3000

Approvals	FCC Class A, CE, RoHS2
Hardware Compatibility	All computers with DVI-D/DisplayPort digital video and USB interfaces
Software Compatibility	Operates with all known software and operating systems, including Windows®, Linux®, Unix®, BSD, all Sun® OS, all Mac® OS, NetWare®, etc.
Connectors	Front: (3) RJ-45 computer ports, (7) RJ-45 user ports, (1) 10/100/1000 RJ-45 network port; Rear: (20) RJ-45 computer ports, (1) DB9 male, (2) 3-position locking power connectors; User console ports: Front panel: (10) RJ-45; Computer ports: Back panel: (20) RJ-45; <i>NOTE: Ports 21 to 23 on the front panel and any of the 20 back-panel computer ports can be reallocated as user console ports. This enables you to share up to 23 computers with multiple users via standard structured cabling.</i> Power: (2) 12-V, 2-A 3-position locking power connectors on switch; (1) IEC connector on the supplied country-specific power cord
Distance (Maximum)	Between SAM and switch: 32 ft. (10 m); Between switch and remote unit: 164 ft. (50 m)
Resolution	1920 x 1200 at 60 Hz
Temperature	32 to 104° F (0 to 40° C)
Power	External, in-line power supply
Dimensions	1.25"H x 17"W x 6.25"D (3 x 43 x 16 cm)
Weight	3.5 lb. (1.6 kg)

DCX3000 Digital KVM Remote User Station (DCX3000-DVR) Specifications



DCX3000-DVR,
front angled view



DCX3000-DVR,
rear view

Specifications for DCX3000-DVR

Approvals	FCC Class A, CE, RoHS2
Connectors	<p>Front:</p> <ul style="list-style-type: none"> (2) USB Type A F, (2) 3.5-mm speaker/microphone; <p>Rear:</p> <ul style="list-style-type: none"> (1) DVI-D output, (2) USB Type A F; <p>Other:</p> <p>Rear:</p> <ul style="list-style-type: none"> (1) 6-position RJ-12 options port, (1) RJ-45 link, (1) Hirose 3-position locking power connector
Resolution	1920 x 1200 at 60 Hz
Temperature	32 to 104° F (0 to 40° C)
Power	External in-line power supply
Dimensions	1.25"H x 6.7"W x 4.4"D (3 x 17 x 11.2 cm)
Weight	1.15 lb. (0.5 kg)

DCX3000 Digital KVM Switching System

DCX3000 Server Access Module - DVI + USB (DCX3000-DVT) Specifications



DCX3000-DVT

Specifications for DCX3000-DVT

Approvals	FCC Class A, CE, RoHS2
Connectors	(1) DVI-D M, (1) USB Type A M, (1) RJ-45 link, <i>NOTE: SAM has 10" long pigtails for DVI and USB .</i>
Distance (Maximum)	SAM to receiver: 164 ft. (50 m); SAM to switch: 32 ft. (10 m)
Resolution	1920 x 1200 at 60 Hz
Power	Via USB interface
Dimensions	1.5"H x 3.1"W x 2.5"D (4 x 8 x 6.3 cm)
Weight	0.25 lb. (0.11 kg)

DCX3000 Server Access Module - DisplayPort + USB (DCX3000-DPT) Specifications

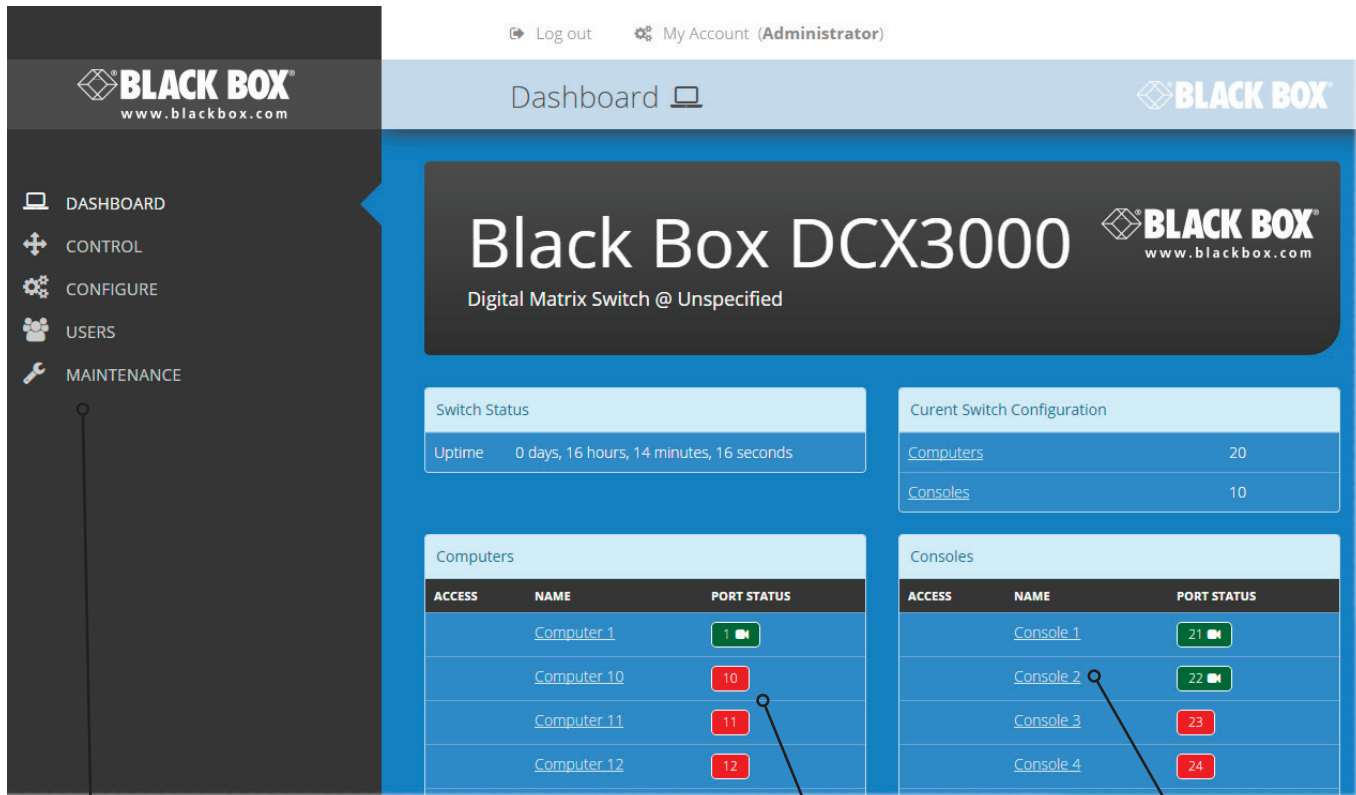


DCX3000-DPT

Specifications for DCX3000-DPT

Approvals	FCC Class A, CE, RoHS2
Connectors	(1) DisplayPort M, (1) USB Type A M, (1) RJ-45 link, <i>NOTE: SAM has 10" long pigtails for DisplayPort and USB.</i>
Distance (Maximum)	SAM to receiver: 164 ft. (50 m); SAM to switch: 32 ft. (10 m)
Resolution	1920 x 1200 at 60 Hz
Power	Via USB interface
Dimensions	1.5"H x 3.1"W x 2.5"D (4 x 8 x 6.3 cm)
Weight	0.25 lb. (0.11 kg)

DCX3000 Graphical User Interface (GUI)

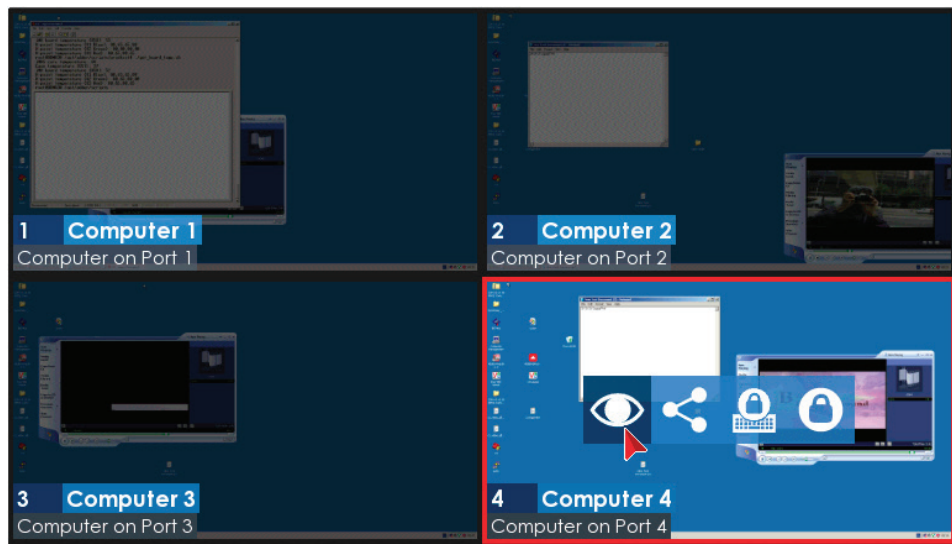


Click the required menu item to reveal the available page choices.

Colors are used to provide quick visual feedback. Here ports shown in green are operational while those in red are disconnected. Ports shown in white indicate that their modules require a firmware update.

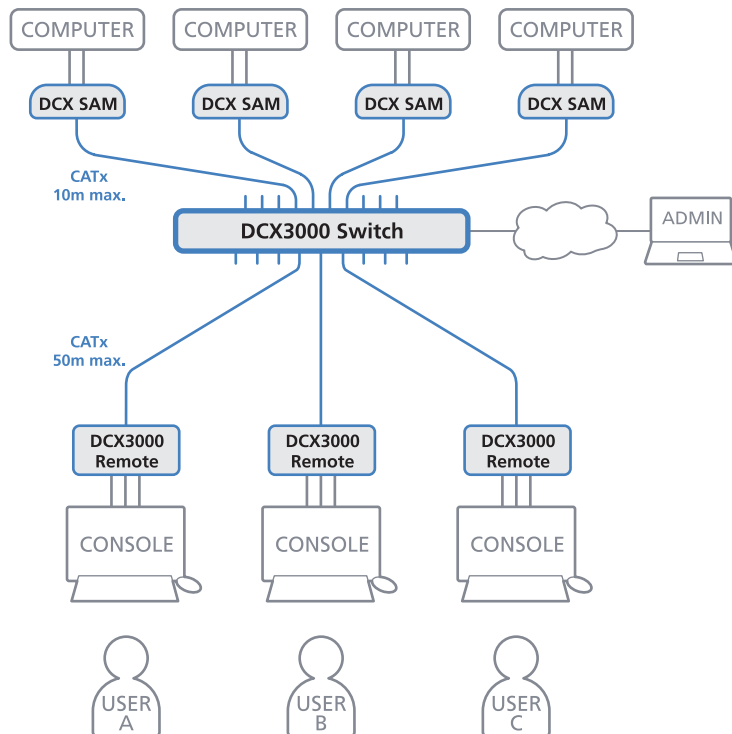
Information and options are displayed within the main section of the page. Some items will provide further popup information when you hover your mouse pointer over them.

Matrix View



DCX3000 Digital KVM Switching System

A typical application of the DCX3000 Digital KVM Switching System is shown below.



Disclaimer:

Black Box Network Services shall not be liable for damages of any kind, including, but not limited to, punitive, consequential or cost of cover damages, resulting from any errors in the product information or specifications set forth in this document and Black Box Network Services may revise this document at any time without notice.

About Black Box:

Black Box is a leading technology solutions provider that helps customers design and deploy high-performance KVM and extension and switching applications. The company specializes in complete solutions from the desktop to beyond the data center for fully integrated KVM, extension, and matrix switching systems for command and control rooms, broadcast applications, and other mission-critical monitoring and control applications. Black Box provides its customers with free 24/7 pre- and post-sales technical support.

© Copyright 2015. Black Box Corporation. All rights reserved. Black Box® and the Double Diamond logo are registered trademarks of BB Technologies, Inc. Any third-party trademarks appearing in this publication are acknowledged to be the property of their respective owners.