

specifications

Overall Dimensions

25.2" x 22.4" x 37.4-41"
(W x D x H)

Seat

19.9" x 15.75" (W x D)

Back

19.3" x 20.7" (W x H)

Seat Height

17.9" (at lowest point)
21.5" (at highest point)

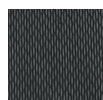
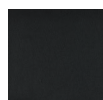
Weight

40 lbs

Cube

4.2

standard colors

black mesh**black fabric**

MF272BLK

\$355



features

Tilt Tension Control

Recline rate adapts to weight of user.

Swivel-Tilt

Chair tilts from a point under the center of the seat allowing user to rock back and forth. Tension adjustable.

Tilt Lock

Locks out tilt function.

Synchro-Tilt

Back reclines in a preset ratio to seat.

Seat Height Adjustment

Sets seat height to desired position relative to floor.

Waterfall Seat

Front of cushion slopes to reduce pressure on the back of the knees.

Arm Height Adjustment

Adjusts arm up or down for proper ergonomic positioning while seated.



eurotech
a raynor group company

1.800.637.0005

email: customerservice@raynorgroup.com
catalog requests: literature@raynorgroup.com