

PowerShot SX620 HS



GET CREATIVE AND INCREDIBLY CLOSE WITH 25X ZOOM

The ideal compact travel superzoom camera designed to get you closer to the action, thanks to a new 25x optical zoom. The SX620 HS is perfect for capturing precious moments, when a smartphone snap simply won't cut it, thanks to the 20.2 Megapixel CMOS sensor and DIGIC 4+ processor. With intuitive handling and a unique range of creative effects, the PowerShot SX620 HS helps you unlock your creative side, and has effortless connectivity capabilities.

Premium Quality Images

The combination of a large 20.2 Megapixel CMOS sensor & DIGIC 4+ imaging processor, delivers sharp, clear images - even in low light.

25x Optical Zoom

The 25x optical zoom and 25mm wide-angle lens allows you to get closer to your subject, shooting beautiful landscapes or capturing great group shots.

Creative Versatility

Innovative features like Hybrid Auto and Creative Shot offer new twists to your creative vision.

Camera Connect App

Connect the SX620 HS to your Apple or Android device for remote shooting as well as easily download your photos.

no one sees it like you

Canon

PowerShot SX620 HS

GET CREATIVE AND INCREDIBLY CLOSE WITH 25X ZOOM



Expand your creative photography skills through applying a range of artistic presets such as toy camera or fish eye effect



Hybrid Auto mode records 4 seconds of video before each shot then compiles them all into a single video



Camera Connect



Connect the SX620 HS to your Apple or Android device for remote shooting as well as easily download your photos



Capture images remotely and view live images from the camera via your phone with remote shooting



Automatically compile images and videos captured in Hybrid Auto mode to create an unforgettable narrative



Bring your memories to life as you experience videos on Full HD quality in 30p/MP4 recording

no one sees it like you

Canon

PowerShot SX620 HS

GET CREATIVE AND INCREDIBLY CLOSE WITH 25X ZOOM

25mm
WIDE

25x

The 25mm wide angle lens allows you to capture more in your frame. Together with the reach of 625mm equivalent at the telephoto end, the SX620 HS is the ideal travel camera.

20.2 MEGA
PIXELS
HIGH-SENSITIVITY
CMOS

A large 20.2 Megapixel CMOS sensor enables incredible image quality even in low light situations.



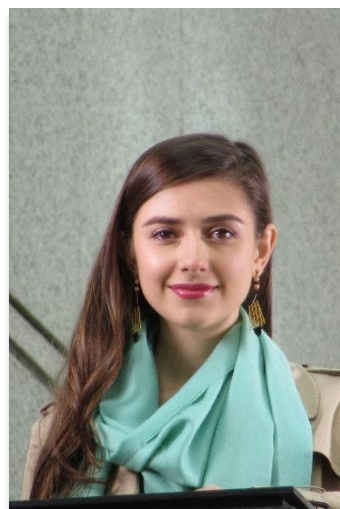
Powerful and innovative, DIGIC 4+ is one of Canon's most advanced imaging processors to date. It commands cutting-edge technology to deliver stunning quality, seamless performance and intuitive operation.



The Canon HS SYSTEM is fuelled by the processing power of DIGIC 4+. Partnered by an advanced High-Sensitivity CMOS sensor, HS System features larger pixels to capture more light and deliver sharp, detailed images.



The PowerShot SX620 HS is available in black and red



no one sees it like you

Canon

Technical Specifications

PowerShot SX620 HS

IMAGE SENSOR	
Type	1/2.3 type back-illuminated CMOS
Effective Pixels	Approx. 20.2M [14]
Colour Filter Type	Primary Colour
IMAGE PROCESSOR	
Type	DIGIC 4+ with ISAPS technology
LENS	
Focal Length	4.5 – 112.5 mm (35 mm equivalent: 25 – 625 mm)
Zoom	Optical 25x ZoomPlus 50x Digital approx. 4.0x (with Digital Tele-Converter approx. 1.6x or 2.0x). Combined approx. 100x 1
Maximum f/number	f/3.2 – f/6.6
Construction	13 elements in 10 groups (1 HI-UD lens, 2 UD lenses, 1 double-sided aspherical UA lens, 1 double-sided aspherical lenses, 1 single-sided aspherical lens)
Image Stabilisation	Yes (lens shift-type), Approx. 2.5-stop13. Intelligent IS plus 4-axis Enhanced Dynamic IS
FOCUSING	
Type	TTL
AF System/Points	AiAF (Face Detection / 9-point), 1-point AF (fixed to centre)
AF Modes	Single, Continuous, Servo AF/AE [6], Tracking AF
AF Point Selection	Size (Normal, Small)
AF Assist Beam	Yes
Closest Focusing Distance	1 cm (W) from front of lens in Macro
EXPOSURE CONTROL	
Metering modes	Evaluative (linked to Face Detection AF frame), Centre-weighted average, Spot (Centre)
Exposure Compensation	+/- 2 EV in 1/3 stop increments. Enhanced i-Contrast for automatic dynamic range correction
ISO sensitivity	AUTO, 100, 200, 400, 800, 1600, 3200
SHUTTER	
Speed	1 – 1/2000 sec. (factory default) 15 – 1/2000 sec. (total range – varies by shooting mode)
WHITE BALANCE	
Type	TTL
Settings	Auto (including Face Detection WB), Daylight, Cloudy, Tungsten, Fluorescent, Fluorescent H, Custom.
COLOUR MATRIX	
Type	sRGB
LCD MONITOR	
Monitor	7.5 cm (3.0") sRGB PureColor II G LCD (TFT). Approx. 922,000 dots
Coverage	Approx. 100%
Brightness	Adjustable to one of five levels. Quick-bright LCD

FLASH	
Modes	Auto, Manual Flash On / Off, Slow Synchro
Slow Sync Speed	Fastest speed 1/2000 sec.
Red-Eye Reduction	Yes
Flash Exposure Compensation	Face Detection FE, Smart Flash Exposure
Built-In Flash Range	50 cm – 3.5 m (W) / 1.0 m – 2.0 m (T)
External Flash	Canon High Power Flash HF-DC2
SHOOTING	
Modes	Hybrid Auto, Creative Shot, SCN (Smart Auto (32 scenes detected), P, Portrait, Smart Shutter (Smile, Wink Self-Timer, FaceSelf-Timer), High-speed Burst (5.0 MP), Handheld Night Scene, Low Light (5.0 MP), Fish-eye Effect, Miniature Effect, Toy Camera Effect, Monochrome, Super Vivid, Poster Effect, Fireworks, Long Shutter)
Modes in Movie	My Colors (My Colors Off, Vivid, Neutral, Sepia, Black & White, Positive Film, Lighter Skin Tone, Darker Skin Tone, Vivid Blue, Vivid Green, Vivid Red, Custom Color)
Photo Effects	Single, Continuous, Self-Timer
Drive modes	Approx. 2.5 shots/s
Continuous Shooting	High-speed Burst (5.0 MP): Approx. 7.1 shots/s (all speeds are until memory card becomes full)3,4 Hybrid Auto, Creative Shot, SCN (Smart Auto (32 scenes detected), P, Portrait, Smart Shutter (Smile, Wink Self-Timer, FaceSelf-Timer), High-speed Burst (5.0 MP), Handheld Night Scene, Low Light (5.0 MP), Fish-eye Effect, Miniature Effect, Toy Camera Effect, Monochrome, Super Vivid, Poster Effect, Fireworks, Long Shutter)
RECORDING PIXELS / COMPRESSION	
Image Size	4:3 - (L) 5184 x 3888, (M1) 3648 x 2736, (M2) 2048 x 1536, (M) 2592 x 1944, (S) 640 x 4806 16:9 - (L) 5184 x 2912, (M1) 3648 x 2048, (M2) 1920 x 1080, (S) 640 x 360 3:2 - (L) 5184 x 3456, (M1) 3648 x 2432, (M2) 2048 x 1368, (S) 640 x 424 1:1 - (L) 3888 x 3888, (M1) 2736 x 2736, (M2) 1536 x 1536, (S) 480 x 480 Resize option available in playback
Compression	Superfine, Fine
Movies	(Full HD) 1920 x 1080, 29.97 fps, (HD) 1280 x 720, 29.97 fps, (L) 640 x 480, 29.97 fps
Movie Length	(Full HD & HD) Up to 4 GB or 29 min 59 s ⁷ (L) Up to 4 GB or 1 hour ⁴
FILE TYPES	
Still Image Type	JPEG compression, (Exif 2.3 [Exif Print] compliant) / Design rule for Camera File system, Digital Print Order Format [DPOF] Version 1.1 compliant
Movies	MP4 [Video: MPEG4-AVC / H.264, Audio: MPEG4 AAC-LC (monaural)]

For more information visit
canon.com.au
canon.co.nz

no one sees it like you



PowerShot SX620 HS

DIRECT PRINT Canon Printers PictBridge	Canon SELPHY Compact Photo Printers and Canon Inkjet Printers supporting PictBridge Yes (via USB or Wireless LAN)
OTHER FEATURES GPS Red-Eye Correction Intelligent Orientation Sensor Histogram Playback zoom Self Timer Menu Languages	GPS via mobile (linked to compatible smartphone) Yes, during shooting and playback Yes, with Auto Rotate Yes Approx. 2x – 10x Approx. 2 or 10 sec. or Custom English, German, French, Dutch, Danish, Finnish, Italian, Greek, Norwegian, Portuguese, Russian, Swedish, Spanish, Ukrainian, Polish, Czech, Hungarian, Turkish, Simplified Chinese, Chinese (traditional), Japanese, Korean, Thai, Arabic, Romanian, Farsi, Hindi, Malay, Indonesian, Vietnamese, Hebrew
INTERFACE Computer Other Computer/Other	Hi-Speed USB dedicated connector (Micro-B compatible) HDMI Micro (Type-D) Connector Wi-Fi (IEEE802.11b/g/n), (2.4 GHz only), with Dynamic NFC support ^[1]
MEMORY CARD Type	SD, SDHC, SDXC
SUPPORTED OPERATING SYSTEM PC & Macintosh	Windows 10 / 8.1 / 8 / 7 SP1 ¹⁸ Mac OS X 10.9 / 10.10 / 10.11 For Wi-Fi connection to a PC: Windows 10 / 8.1 / 8 / 7 SP1 Mac OS X 10.9 / 10.10 For Image Transfer Utility: Windows 10 / 8.1 / 8 / 7 SP1 Mac OS X 10.9 / 10.10 / 10.11
SOFTWARE Other	CameraWindow DC Map Utility Image Transfer Utility Camera Connect app available on iOS and Android devices

POWER SOURCE Batteries Battery life	Rechargeable Li-Ion Battery NB-13L (battery and charger supplied) Approx. 295 shots Eco Mode: Approx. 405 shots Playback Mode: Approx. 360 min
ACCESSORIES Flash Power Supply & Battery Chargers Other	High Power Flash HF-DC2 Battery Charger CB-2LHE Rechargeable Li-Ion Battery NB-13L Interface cable IFC-600PCU
PHYSICAL SPECIFICATIONS Operating Environment Dimensions (WxHxD) Weight	0 – 40° C, 10 – 90% humidity 96.9 x 56.9 x 27.9 mm Approx. 182 g (including battery and memory card)

All data is based on Canon standard testing methods (according to CIPA Standards) except where indicated.

Subject to change without notice.

[1] Depending on the image size selected.

[3] Under conditions where the flash does not fire.

[4] Depending on memory card speed / capacity / compression setting.

[6] Some settings limit availability.

[7] The following Speed Class memory cards are required for maximum record time: (HD) 1280 x 720 Speed Class 4 or above. (Full HD) 1920 x 1080 Speed Class 6 or above. (iFrame) 1280 x 720 Speed Class 6 or above.

[11] Wi-Fi use may be restricted in certain countries or regions. Wi-Fi support varies by device and region. For more information visit www.canon-europe.com/wirelesscompacts

[13] Values at maximum optical focal length. Cameras whose focal length exceeds 350 mm (35 mm equivalent) are measured at 350 mm.

[14] Image processing may cause a decrease in the number of pixels.

[18] Software applications compatible with Windows 10 in Windows 10 Desktop Mode only

For more information visit
canon.com.au
canon.co.nz

no one sees it like you

Canon