



AOPEN

Bright Ideas Connected

DSD



The 55" entry level display **DSD55-HA2**

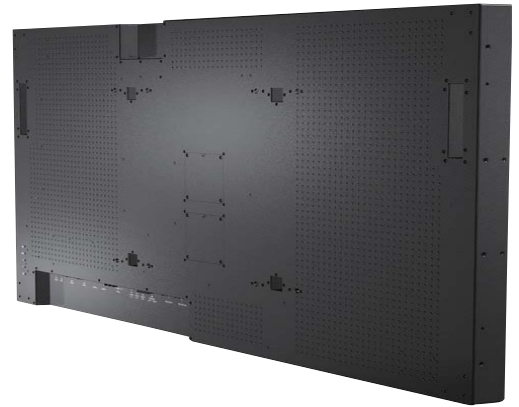
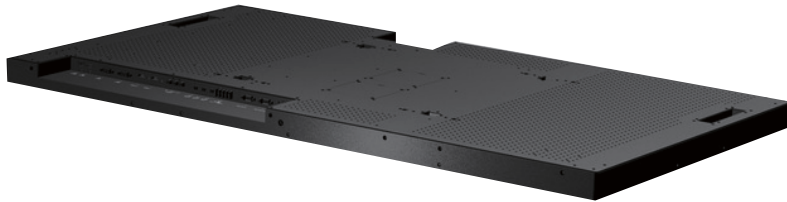


This 55" display especially designed for creative retailers looking for an eye catching display. The DSD55-HA2 is ideal for long-term use due to the advanced thermal control and strong exterior.



- + Narrow Bezel
- + Metal Framework
- + Fanless
- + Thermal Alarm & Protection
- + RS232 remote control API utility support

DSD55-HA2



Model name		DSD55-HA2
Features		Narrow Bezel 11.8mm, Fanless Thermal Alarm & Protection External IR socket R-J12 (External IR kits is optional)
Screen size		55 inch
Dimension	Set W x H x D (mm)	1238.6 x 709.4 x 49.7 mm
VESA Mount		500x400 / 300x400 mm
Weight(Net/Gross)		28kg/36kg
Bezel width		11.8 mm
Display Orientation		Landscape/portrait
Green Compliance		RoHS : Yes
Internal Speaker		Option
IR remote control		Yes
Keypad		Yes
Regulation and Standard Compliance		FCC, UL, CE, CB, BSMI
Humidity		10-80% R.H. max
Lifetime		50,000 Hrs
Power	Consumption (Max.)	120 W
	Consumption at Stand-by(Max.)	1.5 W
	Input	AC 100~240V AC 50/60Hz

I/O Port	AC inlet	x 1
	AC outlet	x 1
	HDMI	x 2
	VGA	x 2
	External Speaker	R/L 8Wx2
	RS232	in x1 out x1
Temperature	Audio in	x 2
	Audio out	x 1
Temperature	Operating temperature	0° to 40°
	Storage temperature	-20° to 60°
Package Contents	AC power cable	Yes
	Remote controller	Yes
	Battery	CR2025
	VESA Mount screw	x4 pcs
LCD Panel		
Resolution	1920 x1080	
Pixel Pitch	0.21x0.63	
Brightness	700 nits	
Viewing Angle	178/178	
Contrast Ratio	4000:1	
Response Time	6.5 ms	
Color/gray scale	1073M/10bits	
Aspect ratio	16:9	
Frequency	60Hz	
Surface Treatment	AG,3H	

*Accessories available on demand



Authorised Australian & New Zealand Distributor:
Goodson Imports Pty Ltd
142 Wicks Road
Macquarie Park NSW 2113
Offices in all main States and New Zealand
Ph: 02-8875 4544 Fax 02-8875 4588
www.goodson.com.au

The specifications depicted may be subject to change without prior notice.
All trademarks are copyright of their respective owners. © AOPEN Inc.