

# Versatile digital sending, plus scanning to PC and mobile devices

HP ScanJet Pro 4500 fn1 Network Scanner



# Table of contents

<b>3</b>	Fast scanning and secure digital sending
<b>4</b>	Product walk around
<b>5</b>	Product comparison
<b>6</b>	Key benefits at a glance
<b>7</b>	Robust digital sending—even to mobile devices
<b>8</b>	Fast, smooth scanning— every page
<b>9</b>	Customised scanning for streamlined workflows
<b>10</b>	HP Scan software
<b>13</b>	Page-by-page confidence
<b>14</b>	Technical specifications
<b>15</b>	Ordering information

## Fast scanning and secure digital sending

Share high-speed scanning with the entire workgroup with a network scanner recommended for 4,000 sheets per day. Scan both sides of the page in one pass—HP EveryPage means you won't worry about missing pages.<sup>1</sup> Digital sending is easy from the touchscreen via Ethernet or wireless network. And using the HP JetAdvantage Capture App, you can initiate scans directly from your mobile device—without accessing a PC.<sup>2</sup>

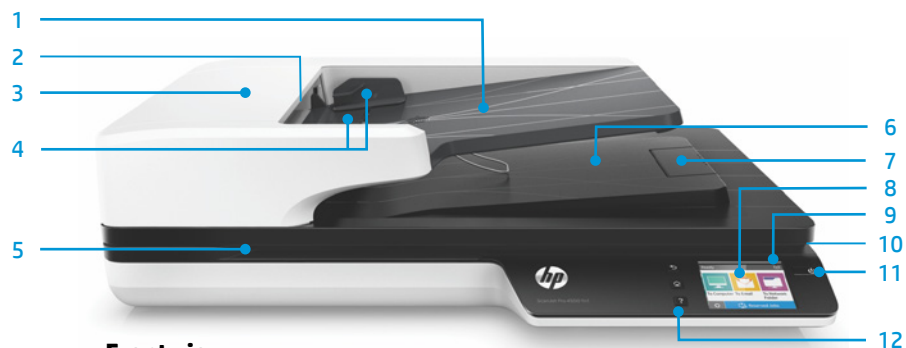
### Who can benefit?

The HP ScanJet Pro 4500 fn1 Network Scanner is ideal for small and medium businesses who require productive digitisation with secure digital sending and sharing—including scanning directly to mobile devices.<sup>2</sup> This scanner provides versatile and full-featured scanning that delivers excellent paper handling, reliability, and productivity. Get high-speed scanning for any job, including complex workflows with a scanner designed to handle 4,000 sheets per day.

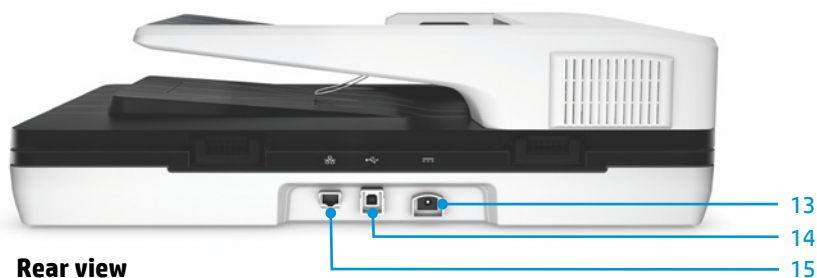


# Product walk around

- 1 Automatic document feeder (ADF) tray
- 2 ADF latch
- 3 50-sheet ADF with single-pass, two-sided scanning and HP EveryPage
- 4 Paper guides
- 5 Legal-size flatbed for bulky or fragile media
- 6 Output tray
- 7 Output stopper
- 8 7.11 cm (2.8-inch) touchscreen with three preconfigured commonly used workflow buttons
- 9 Built-in wireless networking
- 10 Built-in Wi-Fi Direct
- 11 Power on/off button
- 12 Back, home, and help buttons
- 13 Power connector
- 14 SuperSpeed USB 3.0 port
- 15 LAN port



**Front view**



**Rear view**

# Product comparison

The following table compares the new HP ScanJet Pro 4500 fn1 Network Scanner with the HP Scanjet N6350 and the HP Scanjet 8270 Document Flatbed Scanners:



HP ScanJet Pro 4500 fn1	HP Scanjet N6350/8270	Benefits
Send scans via wireless network, Wi-Fi Direct, or Ethernet <sup>3</sup>	Simple Ethernet only/no networking available	Increased sharing and digital sending options
Initiate scans directly from mobile devices with the HP JetAdvantage Capture App <sup>2</sup>	No mobile scanning available	Accelerate workflow—snap, store, and route digital files using your smartphone or tablet
7.11 cm (2.8-inch) touchscreen	2-line LCD with buttons/ 4-line LCD with buttons	Easily manage and send scans from the touchscreen to email, network folders, or PC <sup>3</sup>
ADF enables single-pass, two-sided scanning	Reversing ADF enables two-sided scanning	Improve productivity with faster, more reliable two-sided scanning
Scan speed <sup>4</sup> Single-sided: up to 30 pages per minute (ppm) at 300 dots per inch (dpi) Two-sided: up to 60 images per minute (ipm) at 300 dpi	Scan speed <sup>5</sup> Single-sided: up to 15/25 ppm at 300 dpi Two-sided: up to 6 ipm at 300 dpi	Save time with 10x faster two-sided scanning
HP EveryPage ultrasonic multi-feed detection <sup>1</sup>	No multi-feed detection available	Helps avoid missing pages and misfeeds
ADF supports paper up to 309.9 cm long	ADF supports paper up to 35.5 cm long	Capture wide range of media types with extra-long page support through the ADF
Flatbed maximum scan size: Legal	Flatbed maximum scan size: A4	Increased capability with larger flatbed for legal-size documents
Recommended daily duty cycle: 4,000 pages	Recommended daily duty cycle: 500/1,000 pages	Increase performance with up to 8x higher duty cycle
Capture scans directly to the cloud, including Google Drive™ and DropBox	No scan to cloud destinations available	Increased flexibility—quickly share or archive scans
Full-featured Kofax VRS Pro®, certified TWAIN, and ISIS®	TWAIN, ISIS	Integrate easily with popular and in-house software
SuperSpeed USB 3.0	Hi-speed USB 2.0	Improved efficiency with faster file transfer speeds
Book-edge scanning	Not available	Prevents distorted text and ensures pages appear uniform, even near the spine of a book

## Key benefits at a glance

This compact wireless network scanner includes fast two-sided scanning and helps provide secure digital sending. Initiate scans from mobile devices using the HP JetAdvantage Capture App.<sup>2</sup> Enhance productivity with a touchscreen, Wi-Fi Direct,<sup>2</sup> HP EveryPage,<sup>1</sup> a SuperSpeed USB 3.0 connection, and a 50-page ADF with a recommended duty cycle of 4,000 sheets per day.



### Robust digital sending—even to mobile devices

- Send scans right from the scanner to email, network folders, or a PC via a gigabit Ethernet connection.<sup>3</sup>
- Initiate scans directly from mobile devices with the HP JetAdvantage Capture App. Or capture a document with your smartphone or tablet, and then edit, save, and share files.<sup>2</sup>
- Remotely monitor and manage jobs, and enable security settings with the HP Embedded Web Server.
- Send scans through the network with security protocols and to mobile devices via Wi-Fi Direct.<sup>2</sup>



### Fast, smooth scanning—every page

- Produce up to 60 ipm<sup>4</sup> (30 pages) with two-sided scanning and a recommended duty cycle of 4,000 sheets per day.
- Capture every page easily—even for stacks of mixed media—with HP EveryPage ultrasonic multi-feed detection.<sup>1</sup>
- Scan documents up to 21.6 x 309.9 cm through the ADF, and use the legal-size flatbed for fragile and bulky media.
- Enjoy robust capabilities—including network, Wi-Fi Direct,<sup>2</sup> PC connected,<sup>3</sup> and flatbed scanning—in a small device perfect for the desktop.
- Book-edge scanning prevents distorted text, even near the spines of books and other bound materials.
- Spend less time waiting—scans reach their destination at fast speeds with a USB 3.0 connection.



### Customised scanning for streamlined workflows

- Scan images directly into applications with included and full-featured Kofax VRS Pro, TWAIN, and ISIS.
- Define scan profiles for common document types, and scan to multiple destinations with HP Scan software.
- Accurately capture text from documents for easy editing with HP Scan and I.R.I.S. Readiris™ Pro OCR software.
- Capture and organise documents, business cards, and other file types with free bundled software, including Nuance® PaperPort® and I.R.I.S. Cardiris™.

## Robust digital sending—even to mobile devices



Get scans to where they're needed with digital sending via wireless network, Wi-Fi Direct, or Ethernet.<sup>3</sup> Initiate scans directly from mobile devices, and edit images, save to the cloud, and more.<sup>2</sup>



### Send scans via Ethernet

Send scans to your destination right from the device. Use the 7.11 cm (2.8-inch) touchscreen to send scans to email, network folders, or a PC via a gigabit Ethernet connection.<sup>3</sup>



### Simply scan to mobile devices

With the HP JetAdvantage Capture App you can initiate and control scans from your mobile device.<sup>2</sup> Using the familiar interface of your smartphone or tablet, you can also snap, store, and route digital files—without having to use your PC.<sup>2</sup> Simply open the app on your mobile device, identify supported devices, and hit “Send” on your mobile device to route your file to a cloud folder, email, Dropbox, or image gallery.

For more information about the HP JetAdvantage Capture App, see the brief located at:  
<http://h20195.www2.hp.com/V2/GetDocument.aspx?docname=4AA6-3071EEW>



### Keep track of your jobs—remotely

Remotely monitor and manage jobs, and enable security settings to help safeguard your documents, using the HP Embedded Web Server.



### Secure digital sending

Transmit scans through the network with security protocols.

Wi-Fi Direct lets you scan to mobile devices within range without having to access the network.<sup>2</sup>



## Rely on a scanner that just won't quit

Focus on your work with no worries about your scanner. With a recommended daily duty cycle of 4,000 pages, the HP ScanJet Pro 4500 fn1 Network Scanner is built to keep your busy office productive.

## Enjoy peace of mind with legendary HP reliability

Prior to its introduction, a new HP ScanJet device undergoes rigorous HP testing to provide consistent, high-quality scans. Tests are performed with a large sample of devices through each step of the design process to be certain that the device measures up to HP standards. The result is a solid, reliable product that produces consistent, excellent scan quality over its entire life.

The scanner includes a standard one-year limited hardware warranty with 24-hour, 7 days-a-week phone support. (Warranty may vary by country as required by law.) Go to [hp.com/support](http://hp.com/support) to learn about HP world-class service and support options in your region.

## Fast, smooth scanning—every page



### Conserve power without sacrificing performance

With its intelligent design, this scanner can help you meet your energy goals.

- **ENERGY STAR® certified:** HP equipment marked with the ENERGY STAR logo is qualified to the U.S. Environmental Protection Agency's ENERGY STAR specifications for imaging equipment. Additional ENERGY STAR information is listed at: [hp.com/go/energystar](http://hp.com/go/energystar).
- **Auto-Off technology:** Stay productive and conserve resources. Use HP Scan software to set your scanner to turn itself off when you don't need it.<sup>6</sup>

Share this fast network scanner with your entire workgroup. Capture both sides of the page—even mixed media—in one pass, at up to 60 ipm<sup>4</sup> (30 pages).



### Scan both sides—fast

Produce up to 60 ipm<sup>4</sup> (30 pages) with fast two-sided scanning—with each page captured in a single pass. Scan smoothly from the 50-page automatic document feeder—recommended for 4,000 sheets per day.



### Superb paper handling

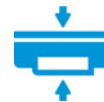
Capture every page easily—even for stacks of mixed media sizes and types. HP EveryPage ultrasonic multi-feed detection delivers smooth paper handling for jobs of all kinds.<sup>1</sup>

Customise misfeed (multipick) detection and specify an exclusion area such as a sticky note or a piece of tape—the scanner will ignore detection for that area, excluding it from the scan.



### Capture a wide range of document types

Scan documents up to 21.6 x 309.9 cm—such as seismic charts—through the ADF. Easily scan fragile materials, books, and other bulky media on the legal-size flatbed.



### Network scanning that's surprisingly small

Enjoy robust capabilities—including network, Wi-Fi Direct,<sup>2</sup> PC connected,<sup>3</sup> and flatbed scanning—in a surprisingly small device. This slim HP ScanJet Pro frees up more space for work—a modern design perfect for the desktop.



### Perfect book pages

Take the hassle out of scanning pages from bound materials. Book-edge scanning prevents distorted text and ensures pages appear uniform, even near the spine of a book.



### Fast file transfer

Spend less time waiting for your images. Scans reach their destination at fast speeds with a SuperSpeed USB 3.0 connection.



## Customised scanning for streamlined workflows



Boost productivity with versatile workflow features and customisable scan profiles. Easily send scans up to 1,200 dpi to various applications, using Kofax VRS Pro, TWAIN, ISIS, and HP Scan software.



### Scan from popular applications

Integrate easily with popular and in-house software. Scan images directly into applications, without having to open another programme, with included and full-featured Kofax VRS Pro, TWAIN, and ISIS.



### Easily scan and edit text

Capture text from documents with high accuracy. Easily scan documents, edit text, and save as a Microsoft® Word or searchable PDF file with HP Scan and I.R.I.S. Readiris Pro OCR software.



### Create custom profiles

Included HP Scan software lets you define scan profiles, scan to the cloud and other destinations, and automatically enhance images and delete blank pages. Scans stay true with limited intervention.

With optical character recognition (OCR) technology, you can scan paper documents and turn them into text-searchable PDF files and fully searchable and editable documents, including Microsoft Word files. OCR is a key feature of more advanced workflows, helping to enable the indexing and retrieval of documents.



### Crisp, clear scans

Get sharp, true-to-life scans of documents, graphics, and photos. With up to 1200 dpi resolution, you'll ensure high image quality for all your scans.

HP Scan lets you monitor the progress of your scans and preview them before saving. Easily make a variety of adjustments to get the results you want, including reordering, adding, or deleting pages, rotating 90 degrees left or right, changing exposure, file type, and destination.



### Easily manage digital documents

Capture and organise documents, business cards, and other file types with a full suite of feature-rich software, including Nuance PaperPort and I.R.I.S. Cardiris.

# HP Scan software



Fast and easy, HP Scan software lets you customise options to enhance, send, and store your scanned documents and images. Use convenient, built-in scan shortcuts or customise settings for the jobs you use most often.

## Get right down to business with a user-friendly interface

Designed with office productivity in mind, this easy-to-use interface lets you quickly set up and review selected settings, then preview and modify your images before saving the scan. You can save as a PDF, JPEG, or text file, and then store locally, in a network folder, or in the cloud. Or, you can easily send them as an attachment via email. Predefined shortcuts are provided for common scanning tasks.

### Add value by customising results

For one-time or repetitive jobs that need specific settings, you can easily modify one of the predefined shortcuts. Just select an existing shortcut and change settings as-needed (for example, select colour instead of black-and-white). With a click of the mouse, you can save the modified shortcut settings, or discard all changes.

Create new shortcuts for the types of scan jobs you perform most often, with settings such as paper size, resolution, file format, destination, and more. Name the shortcuts to reflect the type of document, the task being performed, or whatever best meets your needs.

## Simplify document capture

Use the convenient built-in scan shortcuts or create your own customised shortcuts to make common scanning tasks quick and easy.

The screenshot shows the HP Scan software window for the HP ScanJet Pro 4500 fn1. The interface is divided into two main sections: 'Scan Shortcuts' on the left and 'Scan Shortcut Settings' on the right. The 'Scan Shortcuts' section lists several predefined tasks: 'Save as PDF', 'Save as JPEG', 'Email as PDF', 'Email as JPEG', 'Save as Editable Text (OCR)', 'Send to Cloud', and 'Everyday Scan'. A blue box highlights these shortcuts, with an annotation pointing to it: 'Here are convenient built-in shortcuts for typical scanning tasks'. Below the shortcuts is a 'Create New Scan Shortcut' button, with an annotation pointing to it: 'Create a customised scan shortcut'. The 'Scan Shortcut Settings' section shows the configuration for the 'Save as PDF' shortcut. It includes settings for 'Scan' (Item Type: Document, Page Sides: 1-sided, Page Size: Letter (8.5 x 11 inches), Source: Document Feeder if loaded), 'Image' (Color Mode: Color), and 'Destination' (File Type: PDF, Send To: Local or Network folder). A 'More' link is visible at the top right of this section, with an annotation pointing to it: 'More scan settings here'. At the bottom of the window are 'Scan' and 'Exit' buttons. Other annotations include: 'Here is where you can specify the most common scan settings' pointing to the 'Scan Shortcut Settings' section, and 'More scan settings here' pointing to the 'More' link.

Here are convenient built-in shortcuts for typical scanning tasks

Here is where you can specify the most common scan settings

Create a customised scan shortcut

More scan settings here

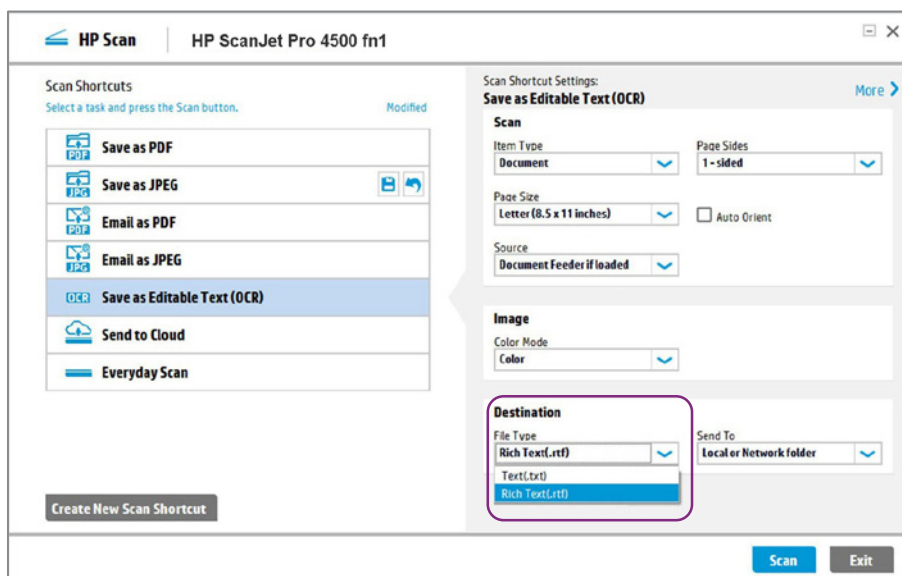
## Turn scans into editable/searchable text (OCR)

HP Scan includes embedded Optical Character Recognition (OCR) technology from I.R.I.S., a long-standing OCR developer. OCR allows you to convert scanned images to common file types—including PDF—with editable and searchable text. OCR capabilities also enhance the indexing and retrieval of documents.

### Choose your output document format

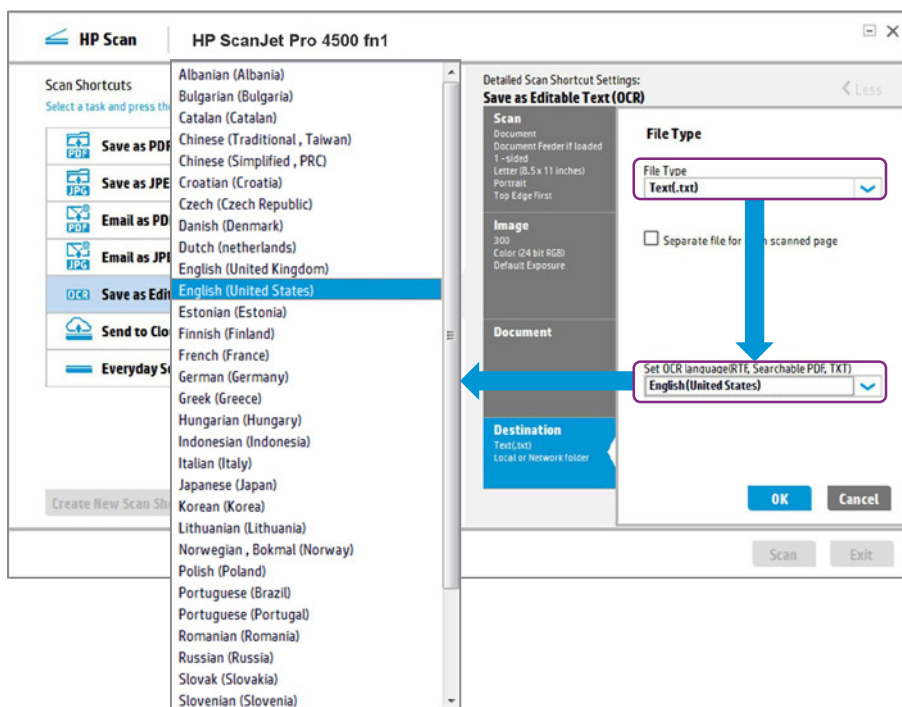
When you select **Save as Editable Text**, you can choose either **Rich Text (.rtf)** or plain **Text (.txt)** format.

- **Rich text (.rtf)** is a file format supported by Microsoft Word and most other word processing programmes. Some of the original formatting is saved using this option.
- **Text (.txt)** creates an ASCII text (TXT) file that can be opened in any word processing programme. The original formatting is not saved with this option.



### Select OCR language

HP Scan's optical character recognition software is able to recognise 36 different languages. To access the language dropdown, click **More**, **File Type**, **Set OCR language(RTF, Searchable PDF, TXT)**.



## Save customised shortcuts

Quickly scan using your most-used settings—then save the settings as a new shortcut. Now you can consistently execute jobs at the touch of a button.

### Save changes to a pre-defined shortcut

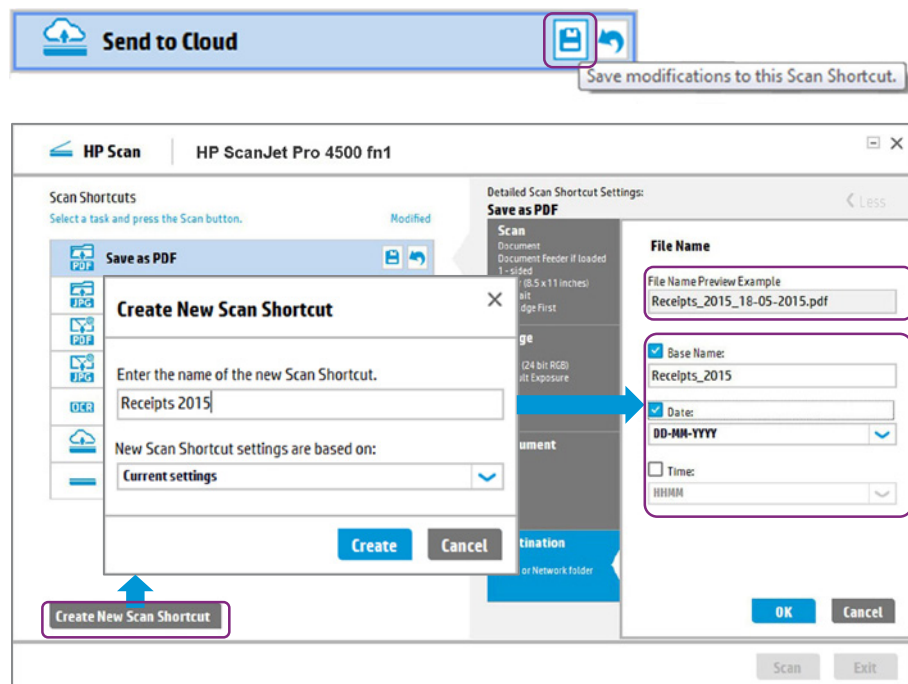
A fast way to make a new scan shortcut is to set up all your desired settings and click the icon **Save modifications to this Scan Shortcut.** You can do this at any time, even after saving the scanned image.

### Create a new shortcut

Another method is to click **Create New Scan Shortcut** at any time. HP Scan will prompt you for a shortcut name and ask if you want to base the new shortcut on the current setting or any of the other defined shortcuts. You can customise the shortcut as needed, including such things as specifying a **Base Name** for the output file, adding a **Date** and **Time** stamp, etc.

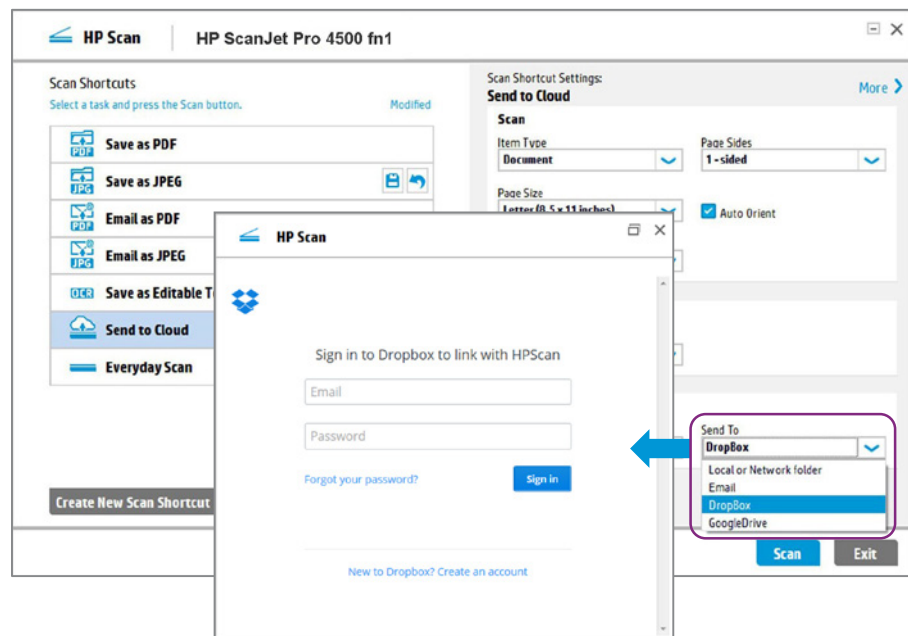
### About Everyday Scan

This predefined shortcut is intended for you to use for quick one-time tasks. All scan settings are available in this shortcut, giving you the flexibility to modify any settings needed. After using, you can quickly undo any changes or save them for the next session.



## Send scans directly to email or the cloud

HP Scan allows you to easily send your scans directly to an email recipient or to cloud-based storage locations.



# Page-by-page confidence



## HP EveryPage technologies include:

- Multiphase pick process
- Advanced separation
- Intelligent picking
- Mixed-stack handling
- Ultrasonic multi-feed detection

For more information, see the HP EveryPage white paper:

<http://h20195.www2.hp.com/V2/GetPDF.aspx/4A-A4-4280ENW.pdf>

Help avoid missing pages and misfeeds. HP EveryPage<sup>1</sup> delivers smoother paper handling for jobs of all kinds. Load stacks of documents—even mixed media sizes and types—and trust your scanner to do the rest.

## Scan with confidence with HP EveryPage

Have confidence that your documents are reliably scanned with HP EveryPage, a set of innovative technologies created to provide a dependable on-ramp to your digital workflow. These technologies provide reliable scanning of almost any document type, even mixed stacks of different paper sizes and weights. Whether you scan business documents or even ID cards, HP EveryPage delivers the peace of mind that comes with knowing that you'll never miss a page.

HP EveryPage delivers smoother paper handling for jobs of all kinds:

- Rely on simple, hassle-free scanning for nearly any kind of input, including mixed stacks of documents—no more time wasted sorting stacks into like sizes and types.
- Minimise your downtime due to misfeeds and stoppages with precise, variable pick technologies that accommodate a variety of input types and sizes and deliver fast, efficient scanning.
- Enjoy peace of mind, knowing that all of your data has been captured—HP EveryPage employs innovative safeguards in the event of a misfeed or stoppage.

## Ultrasonic multi-feed detection—how does it work?

One component of HP EveryPage is the ability to automatically detect multiple feeds to help ensure that all pages are scanned. Sound waves are used to verify that a single sheet has been separated from the stack for processing, helping eliminate the need to count the number of pages fed to make sure it matches the number of scanned pages.

In the event that the ADF is unable to pick a page, or if multiple pages are pulled into the paper path, the feeding process stops and the device notifies you of the error. Pages that have already been scanned are stored in memory, which means that you don't have to restart your scan from the beginning.

Here it is in a nutshell:

- Ultrasonic waves are high-frequency (inaudible) sound.
- The sound waves pass easily through a single sheet of paper.
- If two sheets overlap, the small air gap between them reduces the signal at the receiver. The device senses that reduced signal, stops, and then alerts the user on the computer screen.

### Specify misfeed exclusion area

HP Scan software allows you to specify a region of the scan to be excluded from multi-feed detection. If the scanner detects an area with extra thickness anywhere on the page that is within the length you specify, it will ignore detection for that portion. This is a great feature when you need to scan documents that have sticky notes or a memo attached.

# Technical specifications

HP ScanJet Pro 4500 fn1 Network Scanner	
<b>Product number</b>	L2749A
<b>Scanner type and modes supported</b>	Flatbed scanning with ADF, single-pass two-sided scanning, colour, greyscale or black-and-white
<b>Scan technology</b>	CMOS Contact Image Sensor (CIS) using LED light source, dual-head ADF scanner
<b>Other advanced features</b>	Blank page removal, Auto orientation, Auto colour detect, Auto crop, Auto exposure, Hole removal, Straighten content, Erase edges, Clean up background, Auto threshold, Colour drop out, OCR
<b>Duty cycle (recommended)</b>	4,000 pages per day
<b>Control panel</b>	7.11 cm (2.8-inch) touchscreen; Buttons (Back, Home, Help)
<b>Scan speed at 300 dpi<sup>4</sup> (colour, grey, or black-and-white)</b>	Single-sided: up to 30 ppm; two-sided: up to 60 ipm
<b>ADF scan resolution</b>	Optical: up to 600 dpi Output dpi settings: 75, 150, 200, 240, 300, 400, 500, 600
<b>Flatbed scan resolution</b>	Optical: up to 1200 dpi Output dpi settings: 75, 150, 200, 240, 300, 400, 500, 600, 1200
<b>Bit depth and greyscale</b>	24-bit, 256 greyscale levels
<b>Compatibility</b>	TWAIN (TWAIN certified, version 2.1), ISIS, WIA, Kofax VRS Pro
<b>File formats (text and images)</b>	PDF, JPEG, PNG, BMP, TIFF, TXT (Text), RTF (Rich Text), searchable PDF
<b>Scan input modes</b>	Scan front-panel function: Save as PDF, Save as JPEG, Email as PDF, Email as JPEG, Send to Cloud, Everyday Scan and Save as Editable Text (OCR), HP Scan Software in Win OS, HP Easy Scan/ICA in Mac OS, third-party applications via TWAIN
<b>Memory</b>	1 GB
<b>ADF media specifications</b>	
Input capacity	Up to 50 sheets
Custom sizes	10.5 x 14.8 cm to 21.6 x 309.9 cm (4.1 x 5.8 in to 8.5 x 122 in)
Standard sizes	A4, A5, A6, B5, B5 (JIS); Letter, Legal, Executive; long page support up to 309.9 cm (122 in)
Media weights	45 to 120 g/m <sup>2</sup> (12 to 32 lb)
Media types	Paper (banner, inkjet, photo, plain), envelopes, labels, cards (greeting, index)
<b>Flatbed media specifications</b>	
Scan size limits	25.4 x 25.4 cm to 21.6 x 35.6 cm (1 x 1 in to 8.5 x 14 in)
<b>Connectivity</b>	SuperSpeed USB 3.0, Built-in Fast Ethernet 10/100/1000Base-TX network port, Wi-Fi 802.11 b/g/n
<b>Digital sending</b>	Scan to email, Scan to PC, Scan to Network
<b>Security management</b>	Password-protected network Embedded Web Server
<b>Network protocols</b>	Via built-in networking solution: TCP/IP, IPv4, IPv6; Web Services; Discovery: Bonjour, Web Services Discovery; IP Config: IPv4 (DHCP, Manual), IPv6 (DHCPv6); Management: HTTPS, HTTP
<b>Mobile capabilities</b>	Initiate scans directly from mobile devices via wireless network and Wi-Fi Direct using the HP JetAdvantage Capture App, or capture a document/image with your device camera and then edit, save and share files
<b>Compatible operating systems</b>	Microsoft Windows® 7 or higher Mac OS X El Capitan 10.11
<b>Minimum system requirements</b>	Windows 7 or higher: 2 GHz processor, 2 GB RAM, 170 MB available hard disk space (driver-only install), USB 2.0, 1024 x 768 SVGA monitor Mac OS X El Capitan 10.11: 1 GB available hard disk space, USB or Ethernet port
<b>Dimensions (width x depth x height)</b>	520 x 387 x 145 mm (20.5 x 15.2 x 5.7 in)
<b>Weight</b>	5.98 kg (13.2 lb)
<b>What's in the box</b>	HP ScanJet Pro 4500 fn1 Network Scanner; install guide; HP Scan Software & Driver CD, HP Bonus Pack Software CD, supporting flyers, packaging, USB cable, power adaptor, power cords

**HP ScanJet Pro 4500 fn1 Network Scanner**

<b>Software included</b>	HP Scanner Device Driver, HP WIA scan driver, HP TWAIN Scan Driver (Certified), HP Scan, HP Scanner Tools Utility, HP Windows Installer, I.R.I.S. Readiris Pro, I.R.I.S. Cardiris, Nuance PaperPort, ISIS driver, Kofax VRS, DXP No Mac Software on CD
<b>Warranty</b>	One-year limited hardware warranty, phone and Web support included. Warranty may vary by country as required by law. Go to <a href="http://hp.com/support">hp.com/support</a> to learn about HP world-class service and support options in your region.

## Environmental and power specifications

**HP ScanJet Pro 4500 fn1 Network Scanner**

<b>Environmental ranges</b>	
Temperatures	Recommended operating: 10 to 35° C (50 to 95° F); Storage: -40 to 60° C (-40 to 140° F)
Relative humidity range	Operating range: 15 to 80% RH (non-condensing); Storage range: 0 to 90% RH (non-condensing)
<b>Acoustic sound power emissions</b>	Scanning: 6.3 B(A)
<b>Power specifications<sup>7</sup></b>	ENERGY STAR certified; EPEAT® Silver model available <sup>8</sup>
Power supply	External power adaptor; Input: 100 to 240 VAC (50/60 Hz), Output: 32 Vdc, 1.56 A (1560 mA)
Power consumption	Ready: 6.11 watts, Sleep: 1.35 watts, Auto-off: 0.05 watts, Manual-off: 0.05 watts
Energy-saving features	HP Auto-Off technology; <sup>6</sup> LED light source (no warm-up time required)
<b>Environmental specifications</b>	RoHS-compliant
<b>Safety and regulatory compliance</b>	IEC 60950-1:2005 +A1 and all applicable amendments; CSA/UL 60950-1, 2nd edition (2007); EN 60950-1:2006 +A11 +A1 +A12+A2; EAC safety; Canada cUL CoC; China CCC; European Union CE; Kenya PVOC; Kuwait TER; Nigeria SON; Saudi Arabia SASO; South Africa NRCS; Taiwan BSMI; Ukraine safety approval
<b>Electromagnetic emission standard</b>	Class B Emissions; CISPR 22:2008 (International); European Union EMC Directive 2004/108/EC, EN 55022:2010 (CE mark); China GB9254-2008 (CCC); Taiwan CNS13438:2006 (BSMI); USA CFR47 Part 15, Subpart B (FCC); ICES-003:2012 Issue 5 (Canada); Australia C-tick (includes New Zealand); KN 22 and Korea KCC; EAC EMC Certificate; Ukraine EMC approval; EN 61000-3-2:2014 (harmonics); EN 61000-3-3:2013 (flicker); Immunity CISPR 24:2010, EN 50024:2010

## Ordering information

Use accessories and supplies specifically designed for the scanner to help provide efficient performance. To order the accessories and supplies listed here, go to [hp.com](http://hp.com). To contact HP by country, please visit [hp.com/country/us/en/wwcontact\\_us.html](http://hp.com/country/us/en/wwcontact_us.html).

If you don't have access to the Internet, contact your qualified HP dealer, or call HP (U.S.) at (800) 282-6672.

<b>Product</b>	HP ScanJet Pro 4500 fn1 Network Scanner	L2749A
<b>Supplies</b>	ADF Roller replacement kit	L2750A

## Notes

<sup>1</sup> HP EveryPage is referred to as HP Precision Feed on HP ScanJet devices introduced prior to May 2013.

<sup>2</sup> Requires the HP JetAdvantage Capture App. Download the app at [hp.com/go/documentmanagement](http://hp.com/go/documentmanagement). Wireless performance is dependent on physical environment and distance from access point and may be limited during active VPN connections. Wi-Fi Direct scanning requires the mobile device be connected directly to the Wi-Fi network of the scanner.

<sup>3</sup> Destination PC must have driver and software installed and must be on the same network as the scanner. Up to 10 PCs can be registered at one time.

<sup>4</sup> Scan speeds of up to 60 ipm (30 ppm) measured at 300 dpi (black and white, greyscale, and colour). Actual processing speeds may vary depending on scan resolution, network conditions, computer performance, and application software.

<sup>5</sup> Scan speeds measured at 200 dpi, black and white, greyscale, and colour. Actual processing speeds may vary depending on scan resolution, network conditions, computer performance, and application software.

<sup>6</sup> HP Auto-Off technology capabilities subject to device and settings.

<sup>7</sup> Power requirements are based on the country/region where the scanner is sold. Do not convert operating voltages. This will damage the device and void the product warranty.

<sup>8</sup> EPEAT Silver registered model of this product is available where HP registers imaging and equipment products.

**Sign up for updates**  
[hp.com/go/getupdated](http://hp.com/go/getupdated)



Share with colleagues



Rate this document

© Copyright 2015 HP Development Company, L.P. The information contained herein is subject to change without notice. The only warranties for HP products and services are set forth in the express warranty statements accompanying such products and services. Nothing herein should be construed as constituting an additional warranty. HP shall not be liable for technical or editorial errors or omissions contained herein.

ENERGY STAR is a registered trademark owned by the U.S. Environmental Protection Agency. Google Drive is a trademark of Google, Inc. Microsoft Word and Windows are trademarks of the Microsoft Group of Companies.

4AA6-3042EEP, December 2015, Rev. 1

