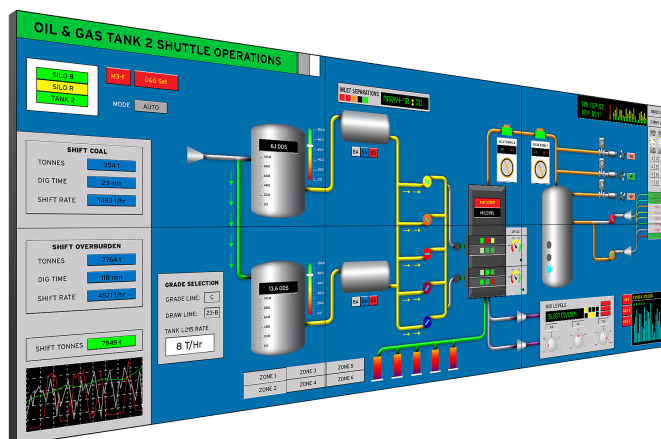


Clarity Matrix LX55HDU

LCD Video Wall System

The 55" Clarity® Matrix® LX55HDU-L features Full HD resolution, LED backlighting, and a mere 3.7mm bezel gap for outstanding tiled visual performance. This model features standard brightness of 500 nits for environments with controlled ambient lighting. Featuring the Planar® EasyAxis™ Mounting System, Clarity Matrix LX55HDU-L has an ultra-thin installed depth of 3.6"/93mm, 6-axis adjustment cams for perfect panel-to-panel alignment, and front-service mode.



SPECIFICATION	DETAIL
Planar Part Number	997-7782-01
Technology	Commercial-grade direct view LCD
Diagonal	55 inches
Aspect Ratio	16:9
Native Resolution Panels	1920 x 1080
Tiled Bezel Width	0.15" (3.7 mm)
Brightness (typ)	500 cd/m ² or nits
Response Time (typ)	8 ms
Contrast ratio (full field)	3500:1
Full viewing angle	178°
Backlight life (1/2 brightness)	50,000 Hrs
Mounted Depth	3.6" wall to front of screen
Acoustic noise	Fanless operation
Heat load	557 BTU per hour at 500 nit
Operating temperature range	5 - 40 Degrees C
Operating humidity range	20-90% RH non-condensing
Backlight control	Individual and wall control
Backlight sensing and reporting	At display level
Display module position sensing	Auto-sensing integrated

Power Consumption (typ)	163 watts
Power supply voltage	100-230V AC \pm 10%, 50 to 60 Hz
Power Status	Diagnostics LEDs, health monitoring and alerts
Safety regulations	Complies with EN60950, FCC Class A, CISPR22/85, CE, EU RoHS
Data Inputs	4 HDMI inputs, 1 DisplayPort input
Control	IR Remote, RS232, Ethernet (optional)
Per Panel Dimensions (Including Mount)	47.78" x 26.94" x 3.6" (1213.6 mm x 684.3 mm x 91.4 mm)
Per Panel Weight (Including Mount)	59 lbs (26.8 kg)
Shipping weight	150 lbs (68.0 kg)
Touch Options	Clarity Matrix MultiTouch Kits

For more information, please visit www.planar.com

Specifications are subject to change without notice.

Specification Report Date: 10/5/2017

© Copyright 2017 Planar Systems, Inc. All rights reserved