

**MST hub - DisplayPort to 3x HDMI**

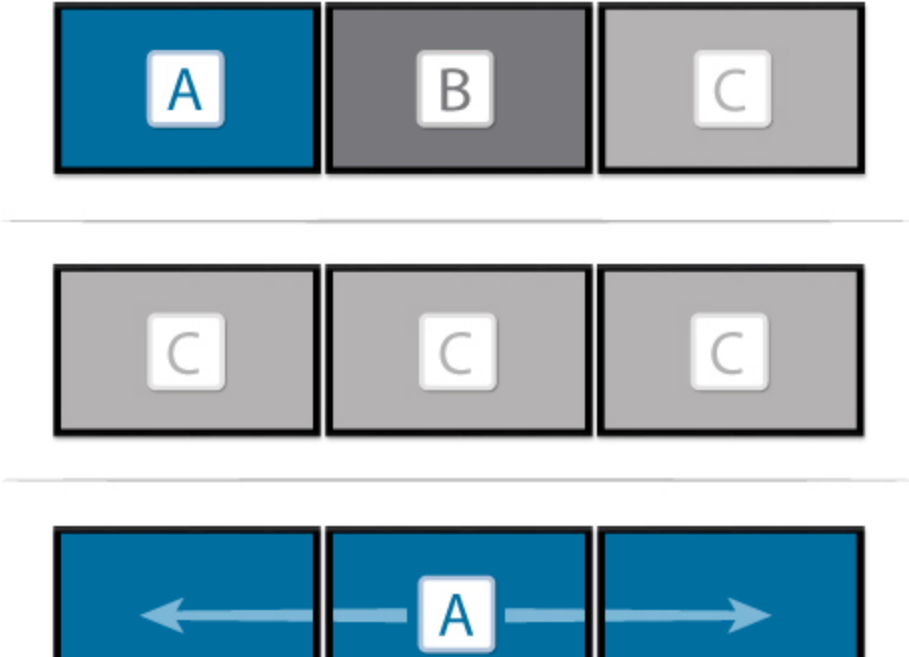
StarTech ID: MSTDP123HD



This MST hub lets you connect three HDMI® monitors to your DisplayPort™ (DP) 1.2 equipped Windows® laptop or desktop.

**Increase productivity with multiple screens**

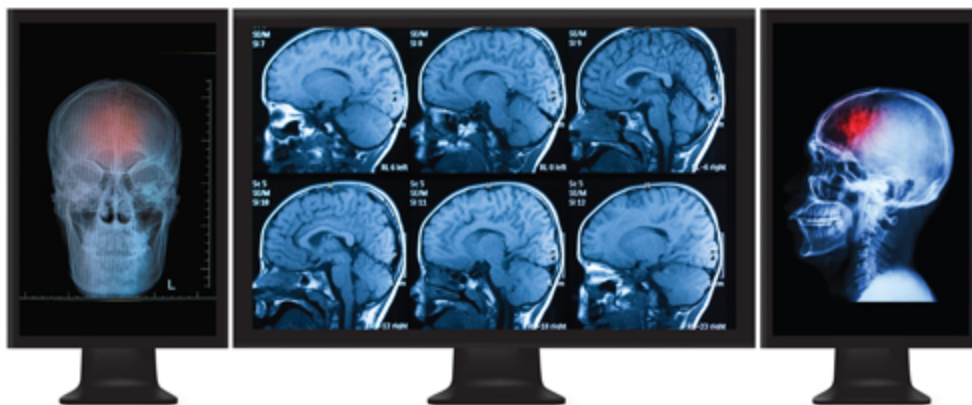
The newest generations of computers are more portable than ever, which often means that you're left with fewer video outputs and smaller integrated screens. This MST hub solves both of these problems by letting you connect three additional displays to your computer, which makes multitasking much easier.





## Configure your displays for any environment

Using the MST hub, you can extend your desktop onto additional monitors and stream independent content to each display. You can also mirror the same image onto multiple HDMI televisions or projectors for remote viewing applications such as digital signage.



## Enjoy amazing video quality without draining system resources

MST technology uses your existing video card to minimize the use of system resources while delivering Ultra HD 4K resolutions. This unprecedented performance makes MST perfect for high-resolution applications such as graphic design, gaming and medical imaging.

*Note: When using a DisplayPort 1.1 video card the MSTDP123HD will act as splitter, automatically mirroring your video source across all displays. Resolution limitations apply.*

The MSTDP123HD supports plug-and-play installation for a hassle-free setup, and is backed by a StarTech.com 2-year warranty and free lifetime technical support.

*Note: MST shares 21.6 Gbps across all attached displays. Higher resolutions can restrict the available bandwidth with the remaining ports, please see our guideline below for determining an ideal resolution for your setup. Certain graphics adapters have limited MST support and will only output to three displays in total. If more than three monitors are attached the fourth will be disabled. Some monitors limit available resolution*

Average Resolution Bandwidth Allocation

1920x1080 (High-definition 1080p) @60hz - 22%  
 1920x1200 @60hz - 30%  
 2560x1440 @60hz - 35%  
 2560x1600 @60hz - 38%  
 3840 x 2160 (Ultra HD 4K) @30hz - 43%

Note: Exceeding 100% will reduce functionality.

### Examples of Supported Resolution Configurations

Screen 1 Resolution	Screen 2 Resolution	Screen 3 Resolution	Total % of Bandwidth
1920x1200 @60hz (30%)	1920x1200 @60hz (30%)	1920x1200 @60hz (30%)	90%
2560x1440 @60hz (35%)	2560x1440 @60hz (35%)	1920x1200 @60hz (30%)	92%
2560x1600 @60hz (38%)	2560x1600 @60hz (38%)	1920x1080 @60hz (22%)	98%
3840x2160 @30hz (43%)	1920x1200 @60hz (30%)	1920x1080 @60hz (22%)	95%
3840x2160 @30hz (43%)	3840x2160 @30hz (43%)	None	86%

### Examples of Unsupported Resolution Configurations

Screen 1 Resolution	Screen 2 Resolution	Screen 3 Resolution	Total % of Bandwidth
2560x1600 @60hz (38%)	2560x1600 @60hz (38%)	1920x1200 @60hz (30%)	106%
3840x2160 @30hz (43%)	2560x1600 @60hz (43%)	1920x1200 @60hz (30%)	116%
3840x2160 @30hz (43%)	2560x1600 @60hz (43%)	2560x1440 @60hz (35%)	121%
3840x2160 @30hz (43%)	3840x2160 @30hz (43%)	3840x2160 @30hz (38%)	124%

## Applications

- Use one screen for reference data such as websites, while composing in another screen
- Dock your DP 1.2 device and add three high-resolution displays at your workstation
- Create a panoramic video wall for HDMI digital signage applications using your DisplayPort computer
- Edit images, video or audio clips across three displays in any orientation or resolution
- Perfect for spanning a spreadsheet or worksheet across three displays, to avoid side-scrolling
- Enjoy the panoramic views built into games and display helpful codes and walk-through data on a third display, at the same time

## Features

- Maximize your productivity by connecting up to three independent displays to your computer using the MST Hub
- Connect your DisplayPort computer to HDMI televisions, monitors or projectors, avoiding the hassle of additional HDMI adapters
- Increase external video performance with support for resolutions up to 4K
- VESA and DisplayPort certified
- Compatible with DP 1.2 graphics cards such as AMD Eyefinity Technology & AMD Radeon
- Plug-and-play installation

Technical Specifications

Warranty	2 Years
Color	Black
Enclosure Type	Plastic
Product Height	0.6 in [14 mm]
Product Length	4.5 in [114 mm]
Product Weight	4.2 oz [119 g]
Product Width	2.6 in [66 mm]
Audio	Yes
Chipset ID	STDP4320
Converter Type	MST Hub
Output Signal	HDMI
Ports	3
Maximum Digital Resolutions	3840 x 2160 @30hz
Supported Resolutions	1024x768 1280x720 (High-definition 720p) 1920x1080 (High-definition 1080p) 1920x1200 2560x1440 2560x1600 3840 x 2160 (Ultra HD 4K) @30hz
Wide Screen Supported	Yes
Connector A	1 - DisplayPort (20 pin) Male Input
Connector B	1 - HDMI (19 pin) Female Output
Center Tip Polarity	Positive
Input Current	0.5 A
Input Voltage	110 ~ 240 AC
Output Current	3A
Output Voltage	5 DC
Plug Type	M
Power Source	AC Adapter Included
Humidity	50-90%
Operating Temperature	0°C to 45°C (32°F to 113°F)
Storage Temperature	-20°C to 70°C (-4°F to 158°F)
Shipping (Package) Weight	18.3 oz [519 g]

Included in Package	1 - DisplayPort to 3x HDMI MST Hub
Included in Package	1 - Universal power adapter (NA/EU/UK/AU)
Included in Package	1 - Quick install guide
OS Compatibility	Windows 10 (32/64) Windows 8/8.1 (32/64) Windows 7(32/64)

## Certifications, Reports and Compatibility

