

Smart-UPS On-Line 208 V

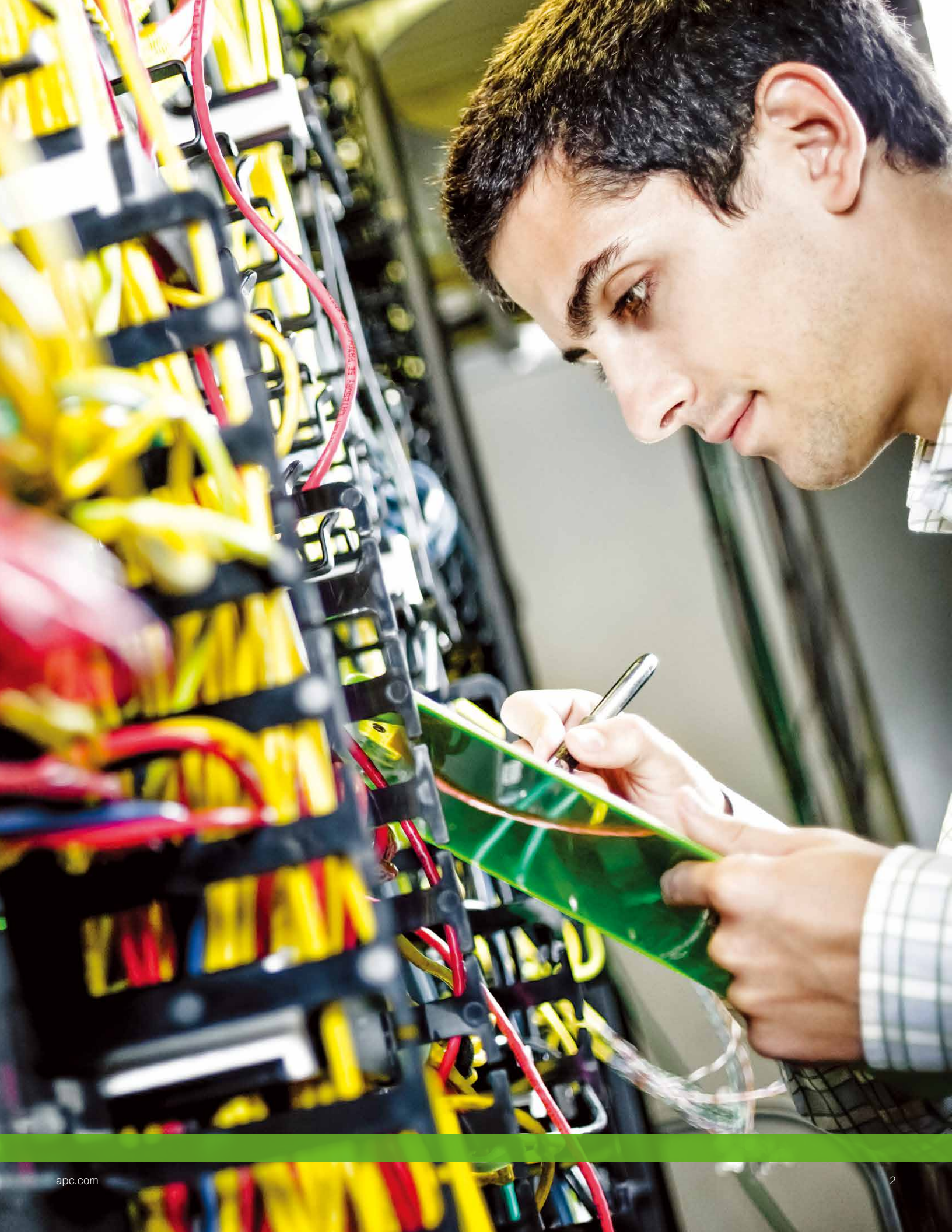
Unity output power factor single-phase,
double-conversion online UPS
with advanced management features



apc.com

Life Is On

APC[®]
by Schneider Electric



A versatile UPS developed for unstable power conditions worldwide

Smart-UPS™ On-Line provides high-density, double-conversion online power protection for servers, voice/data networks, medical labs, and light industrial applications. The Smart-UPS On-Line is capable of supporting loads from 3 kVA to 10 kVA in a rack/tower convertible chassis. The 6 kVA, 8 kVA, and 10 kVA models feature unity output power factor enabling them to support power-hungry blade servers or heavily loaded equipment racks. When business-critical systems require runtime in hours, not minutes, Smart-UPS On-Line can be configured with multiple battery packs to meet aggressive runtime demands.

The included PowerChute™ Network Shutdown management software provides unattended graceful shutdown of network operating systems. Models 5 kVA to 10 kVA include an integrated network management card for remote management. The entire Smart-UPS On-Line family provides value to customers with demanding power conditions, including a very wide input voltage window, extremely tight output voltage regulation, frequency regulation, internal bypass, and input power factor correction.

Smart-UPS On-Line

Industry-leading power factor maximizing UPS density

Rackmount and Tower SRT 3 kVA - 10 kVA



SRT5KXLT shown

Standard Features

Best-in-class Power Density

More real power in watts, 0.9 pf on the 3 kVA, 0.85 pf on 5 kVA, Unity on 6 kVA – 10 kVA units.

High-Efficiency “Green Mode”

Achieves 98% efficiency, which saves utility and cooling costs without compromising performance or reliability. ENERGY STAR® compliant.

Graphical LCD Display

With Multicolor Backlight

Intuitive interface provides detailed and accurate information with ability to configure locally.

Intelligent Battery Management

Temperature-compensated charging extends life and advanced algorithms recommend replacement date. The UPS can inform the user which batteries need to be replaced and auto detect when additional battery packs are added.

Built-in Energy Meter

Measures energy use and displays UPS efficiency in various modes of operation for easy energy tracking.

Operate Without Battery

Ability to immediately protect equipment when power returns after a complete discharge of the battery.

Three-year Warranty on Electronics

Additional year of warranty protection for electronics provides peace of mind.





Smart-UPS On-Line

Proven performance with the world's largest installed base of single-phase, double-conversion products
Rackmount and Tower SRT 3 kVA – 10 kVA



SRT10KXLT shown

Additional Features

Embedded Network Management Card With Environmental Monitoring (5 kVA – 10 kVA models)

Remote monitoring and control of the UPS and the environment via Ethernet connection while freeing up the SmartSlot™ so customers can add accessories for additional communication options.

Switched Outlet Group(s)

Ability to control a group of output load receptacles independent from the main UPS. Enables:

- Rebooting hung device without cycling the entire UPS.
- Sequenced turn on/off.
- Shedding of noncritical loads based on a variety of parameters (battery time, runtime remaining, and overload).
- Scheduled time off to conserve energy.

Emergency Power Off (EPO)

Remote UPS shutoff in the event of a fire or other emergency. The UPS can accept normally open (NO) or normally closed (NC) contacts.

Communication Ports

Serial, USB, Ethernet, and SmartSlot for network accessory cards.

Communication Protocols

Modbus Serial, USB PowerSummary, HTTP, SNMP, and Telnet.

Smart-UPS On-Line

Intuitive, easy-to-use LCD provides clear and accurate information in multiple languages



Backlight screens:

Amber: Indication of condition that requires attention

Red: Indication of UPS alarm that requires immediate attention



Standard Features

LCD Display Screen

Accurately provides real-time status updates in your choice of basic or advanced menus.

UPS Status (Scrolling)

- Output voltage
- Input voltage
- Output frequency
- Run time
- Load
- Battery health

Control

- UPS and outlet group settings
- Bypass control

Configuration

- Output voltage, frequency
- Language, brightness, contrast
- Alarm volume
- IP address

Test and Diagnostics

- Initiate battery and runtime calibration tests

About

- UPS serial number, battery part number
- Battery install and suggested replacement dates

Product Accessories

Management Cards

AP9630: UPS Network Management Card with PowerChute Network Shutdown

AP9631: UPS Network Management Card with PowerChute Network Shutdown & Environmental Monitoring

AP9335TH: APC™ by Schneider Electric™ Temperature & Humidity Sensor

AP9810: APC Dry Contact I/O Accessory

AP9624: UPS Interface Expander

AP9613: Dry Contact I/O SmartSlot Card

Battery Packs

SRT192BP: APC Smart-UPS SRT 192 V 5 kVA and 6 kVA Battery Pack

SRT192RMBP: APC Smart-UPS SRT 192 V 5 kVA and 6 kVA RM Battery Pack

SRT192BP2: APC Smart-UPS SRT 192 V 8 kVA and 10 kVA Battery Pack

SRT192RMBP2: APC Smart-UPS SRT 192 V 8 kVA and 10 kVA RM Battery Pack

SRT96BP: APC Smart-UPS SRT 96 V 3 kVA Battery Pack

SRT96RMBP: APC Smart-UPS SRT 96 V 3 kVA RM Battery Pack

SRT002: APC Smart-UPS SRT 15 ft. Extension Cable for 192 VDC External Battery Packs 5/6 kVA UPS

SRT003: APC Smart-UPS SRT 15 ft. Extension Cable for 192 VDC External Battery Packs 8/10 kVA UPS

SRT010: APC Smart-UPS SRT 15 ft. Extension Cable for 96 VDC External Battery Pack 3 kVA UPS

Rail Kits

SRTRK2: APC Smart-UPS SRT 19 inch Rail Kit for Smart-UPS SRT 5/6/8/10 kVA

SRTRK3: APC Smart-UPS SRT 2 post Mounting Rail Kit for Smart-UPS SRT 3/5/8/10 kVA

SRTRK4: APC Smart-UPS SRT 19 inch Rail Kit for Smart-UPS SRT 2.2/3 kVA

Backplate Kit

SRT001: APC Smart-UPS SRT 5 kVA Output HW Kit

SRT004: APC Smart-UPS SRT 5 kVA PDU, 208 V (4) L6-20

SRT005: APC Smart-UPS SRT 6 kVA PDU, 208 V (4) L6-20, (1) L6-30

SRT008: APC Smart-UPS SRT 8/10 kVA PDU, 208 V (6) L6-30

SRT011: APC Smart-UPS SRT 3 kVA PDU, 208 V (3) L6-30

SRT012: APC Smart-UPS SRT 2.2/3 kVA Input/Output HW Kit

Service Bypass Panels

SBP5KRMT2U: APC Service Bypass Panel — 200/208/240 V; 30 A; BBM; L6-30P input; (2) L6-30R (2) L6-20R output

SBP6KRMT2U: APC Service Bypass Panel — 200/208/240 V; 50 A; MBB; L6-30P/HW input; (1) L6-30R (2) L6-20R output

SBP10KRMT4U: APC Service Bypass Panel — 200/208/240 V; 100 A; MBB; Hardwire input; (3) L6-30R (3) L6-20R output

Step-Down Transformers

SRT5KTF: APC Smart-UPS SRT 5kVA Tower Isolation/Step-Down Transformer

SRT5KRMTF: APC Smart-UPS 5kVA 2U RM Step-Down Transformer

SRT10KRMTF: APC Smart-UPS SRT 10kVA 4U RM Step-Down Transformer

Other

SURT013: SURT Equipment Cart

Replacement Battery Cartridge

APCRBC140: RBC for SRT 5 kVA – 10 kVA UPS

APCRBC152: RBC for SRT 3 kVA UPS



Network Management Card



Battery Pack



Rail Kits

Runtime Estimates at Half and Full Load (Minutes)

UPS Half/Full Loads	SRT3000XLT (RM) SRT3000XLW-IEC (RM) (1,350 W/2,700 W)	SRT5KRMXLW-HW 2,250 W/4,500 W	SRT5KXLT (RM) SRT5KXLT-IEC (RM) 2,125 W/4,250 W	SRT6KXLT (RM) SRT6KXLT-IEC (RM) 3,000 W/6,000 W	SRT8KXLT (RM) SRT8KXLT-IEC (RM) 4,000 W/8,000 W	SRT10KXLT (RM) SRT10KXLT-IEC (RM) 5,000 W/10,000 W
Internal	11.4/3.8	11.8/4	12.6/4.4	8.3/2.3	14.4/5.2	11.4/3.7
(1) Battery pack	46.4/20.5	46.2/20.5	49/21.8	34.7/14.9	34.2/14.6	27.9/11.5
(2) Battery packs	83.3/38.1	83/38	87.8/40.4	62.9/28.3	55/24.4	45.1/19.7
(3) Battery packs	121.6/56.3	121/56.4	128.1/59.7	92.1/42.2	76.4/34.6	62.8/28.1
(4) Battery packs	160.9/75.1	160.4/75.1	169.5/79.5	122.1/56.5	98.3/45	81/36.7

Smart-UPS On-Line SRT 5 kVA and 6 kVA

Technical Specifications

Product features	SRT5KRMXLW-HW	SRT5KXLT SRT5KRMXLT	SRT5KXLT-IEC SRT5KRMXLT-IEC	SRT6KXLT SRT6KRMXLT	SRT6KXLT-IEC SRT6KRMXLT-IEC
Output					
Power rating	5,000 VA/4,500 W	5,000 VA/4,250 W		6,000 VA/6,000 W	
Nominal output voltage	230 V (208, 220, 230, 240 V user selectable)	208 V (240 V user selectable)			
Output frequency	50/60 Hz ± 3 Hz (auto sense) 50/60 Hz ± 0.1 Hz (user selectable)				
Topology	Double-conversion Online				
Online efficiency at full load (typical)	94% (ENERGY STAR)				
Green mode efficiency at full load (typical)	98%				
Output connections	HW	(2) L6-20R (2) L6-30R	(4) IEC 320 C13 (4) IEC 320 C19	(4) L6-20R (2) L6-30R, HW	(6) IEC 320 C13 (4) IEC 320 C19, HW
Input					
Nominal input voltage	230 V (208, 220, 230, 240 V user selectable)	208 V (240 V user selectable)			
Input voltage range full load (half load)	160 – 275 V (100 – 275 V)				
Input frequency	40 – 70 Hz auto-selecting				
Input connection	Hardwire 3-wire (L1+L2/N+G)	L6-30P		Hardwire 3-wire (L1+L2+G)	
Batteries and Runtime					
Battery type	Maintenance-free sealed lead-acid battery with suspended electrolyte, leak proof				
Typical backup time at 1/2 load (min.)	11.8 min.	12.6 min.		8.3 min.	
Typical backup time at full load (min.)	4 min.	4.4 min.		2.3 min.	
Replacement battery (quantity)	APCRBC140 (1)				
External battery pack (tower/rackmount)	SRT192BP/SRT192RMBP				
Communication and Management					
Interface ports	RJ-45 with Status LEDs (10/100 Base-T), Serial (RJ45), USB (Type B) and SmartSlot				
Control panel	High-resolution graphical LCD display				
Emergency power off (EPO)	Yes (NO/NC connections)				
Embedded network management with environmental monitoring	Yes				
Physical					
Rack height	3 U		4 U		
Maximum height rackmount SKU	5.1" (130 mm)		6.85" (174 mm)		
Maximum width rackmount SKU	17" (432 mm)		17" (432 mm)		
Maximum depth rackmount SKU	28.32" (719 mm)		28.32" (719 mm)		
Net weight	123 lbs (55.8 kg)		135 lbs (61.25 kg)		
Conformance					
Regulatory	CE, VDE, UL-1778, FCC Part 15 Class A, cUL	UL-1778, FCC Part 15 Class A, cUL, NOM			
Warranty	3 years for electronics, 2 years for battery				

Smart-UPS On-Line SRT 8 kVA and 10 kVA

Technical Specifications

Product features	SRT8KXLT SRT8KRMXLT	SRT8KXLT30 SRT8KRMXLT30	SRT8KXLT-IEC SRT8KRMXLT-IEC	SRT10KXLT SRT10KRMXLT	SRT10KXLT30 SRT10KRMXLT30	SRT10KXLT-IEC SRT10KRMXLT-IEC
Output						
Power rating	8,000 VA/8,000 W			10,000 VA/10,000 W		
Nominal output voltage	208 V (240 V user selectable)					
Output frequency	50/60 Hz ± 3 Hz (auto sense) 50/60 Hz ± 0.1 Hz (user selectable)					
Topology	Double-conversion Online					
Online efficiency at full load (typical)	94% (ENERGY STAR)			93% (ENERGY STAR)		
Green mode efficiency at full load (typical)	98.5%			99%		
Output connections	(4) L6-20R (2) L6-30R, HW	(6) L6-30R, HW	(6) IEC 320 C13 (4) IEC 320 C19, HW	(4) L6-20R (2) L6-30R, HW	(6) L6-30R, HW	(6) IEC 320 C13 (4) IEC 320 C19, HW
Input						
Nominal input voltage	208 V (240 V user selectable)					
Input voltage range full load (half load)	160 – 275 V (100 – 275 V)					
Input frequency	40 – 70 Hz auto-selecting					
Input connection	Hardwire 3-wire (L1+L2+G)					
Batteries and Runtime						
Battery type	Maintenance-free sealed lead-acid battery with suspended electrolyte, leak proof					
Typical backup time at 1/2 load (min.)	14.4 min.			11.4 min.		
Typical backup time at full load (min.)	5.2 min.			3.7 min.		
Replacement battery (quantity)	APCRBC140 (2)					
External battery pack (tower/rackmount)	SRT192BP2/SRT192RMBP2					
Communication and Management						
Interface ports	RJ-45 with Status LEDs (10/100 Base-T), Serial (RJ45), USB (Type B) and SmartSlot					
Control panel	High-resolution graphical LCD display					
Emergency power off (EPO)	Yes (NO/NC connections)					
Embedded network management with environmental monitoring	Yes					
Physical						
Rack height	6U					
Maximum height rackmount SKU	10.35" (263 mm)					
Maximum width rackmount SKU	17" (432 mm)					
Maximum depth rackmount SKU	28.15" (715 mm)					
Net weight	246 lbs (111.82 kg)					
Conformance						
Regulatory	UL-1778, FCC Part 15 Class A, CSA C22.2 No.107.3-05, NOM					
Warranty	3 years electronics, 2 years battery					

Smart-UPS On-Line SRT 5 kVA and 6 kVA 120/208 V

Technical Specifications

Product features	SRT5KXLT-5KTF	SRT5RMKXLT-5KTF	SRT6KXLT-5KTF	SRT6RMKXLT-5KTF
Output				
Power rating	5,000 VA/4,250 W		6,000 VA/6,000 W	
Nominal output voltage	208 V (240 V user selectable)			
Output frequency	50/60 Hz ± 3 Hz (auto sense) 50/60 Hz ± 0.1 Hz (user selectable)			
Topology	Double-conversion Online			
Online efficiency at full load (typical)	94% (ENERGY STAR)			
Green mode efficiency at full load (typical)	98%			
Output connections	(8) 5-20, (4) L6-20, (2) L6-30, (1) L14-30	(12) 5-20, (2) L6-20, (1) L6-30	(8) 5-20, (4) L6-20, (3) L6-30, (1) L14-30, (1) Hard Wire 3-wire (2PH + G)	(12) 5-20, (2) L6-20, (2) L6-30, (1) Hard Wire 3-wire (2PH + G)
Input				
Nominal input voltage	208 V (240 V user selectable)			
Input voltage range full load (half load)	160 – 275 V (100 – 275 V)			
Input frequency	40 – 70 Hz auto-selecting			
Input connection	L6-30P		Hardwire 3-wire (L1+L2+G)	
Batteries and Runtime				
Battery type	Maintenance-free sealed lead-acid battery with suspended electrolyte, leak proof			
Typical backup time at 1/2 load (min.)	12.6 min.		8.3 min.	
Typical backup time at full load (min.)	4.4 min.		2.3 min.	
Replacement battery (quantity)	APCRBC140 (1)			
External battery pack (tower/rackmount)	SRT192BP/SRT192RMBP			
Communication and Management				
Interface ports	RJ-45 with Status LEDs (10/100 Base-T), Serial (RJ45), USB (Type B) and SmartSlot			
Control panel	High-resolution graphical LCD display			
Emergency power off (EPO)	Yes (NO/NC connections)			
Embedded network management with environmental monitoring	Yes			
Physical				
Rack height	Tower	5U	Tower	6U
Maximum height	17" (432 mm)	8.6" (219 mm)	17" (432 mm)	10.35" (263 mm)
Maximum width	10.2" (260 mm)	17" (432 mm)	11.95" (304 mm)	17" (432 mm)
Maximum depth	28.32" (719.4 mm)	28.32" (719.4 mm)	28.32" (719.4 mm)	28.32" (719.4 mm)
Net weight	248 lbs (112.62 kg)	218 lbs (98.98 kg)	260 lbs (118.07 kg)	230 lbs (104.43 kg)
Conformance				
Regulatory	UL-1778, FCC Part 15 Class A, cUL			
Warranty	3 years electronics, 2 years battery			

Smart-UPS On-Line SRT 8 kVA and 10 kVA 120/208 V

Technical Specifications

Product features	SRT8KXLT-5KTF	SRT8KRMXLT-5KTF	SRT10KRMXLT-10KTF	SRT10KXLT-5KTF2	SRT10KRMXLT-5KTF2
Output					
Power rating	8,000V A/8,000 W		10,000 VA/10,000 W		
Nominal output voltage	208 V (240 V user selectable)				
Output frequency	50/60 Hz ± 3 Hz (auto sense) 50/60 Hz ± 0.1 Hz (user selectable)				
Topology	Double-conversion Online				
Online efficiency at full load (typical)	94% (ENERGY STAR)		93% (ENERGY STAR)		
Green mode efficiency at full load (typical)	98.5%		99%		
Output connections	(8) 5-20, (6) L6-20, (2) L6-30, (1) L14 30, (1) Hard Wire 3-wire (2PH + G)	(12) 5-20, (4) L6-20, (1) L6-30, (1) Hard Wire 3-wire (2PH + G)	(4) L6-20, (2) L6-30, (2) L5-20, (2) L14-30, (1) Hard Wire 3-wire (2PH + G), (1) Hard Wire 4-wire (2PH + N +G)	(16) 5-20, (4) L6-20, (6) L6-30, (2) L14-30, (1) Hard Wire 3-wire (2PH + G)	(24) 5-20, (4) L6-30, (1) Hard Wire 3-wire (2PH + G)
Input					
Nominal input voltage	208 V (240 V user selectable)				
Input voltage range full load (half load)	160 – 275 V (100 – 275 V)				
Input frequency	40 – 70 Hz auto-selecting				
Input connection	Hardwire 3-wire (L1+L2+G)				
Batteries and Runtime					
Battery type	Maintenance-free sealed lead-acid battery with suspended electrolyte, leak proof				
Typical backup time at 1/2 load (min.)	14.4 min.		11.4 min.		
Typical backup time at full load (min.)	5.2 min.		3.7 min.		
Replacement battery (quantity)	APCRBC140 (2)				
External battery pack (tower/rackmount)	SRT192BP2/SRT192RMBP2				
Communication and Management					
Interface ports	RJ-45 with Status LEDs (10/100 Base-T), Serial (RJ45), USB (Type B) and SmartSlot				
Control panel	High-resolution graphical LCD display				
Emergency power off (EPO)	Yes (NO/NC connections)				
Embedded network management with environmental monitoring	Yes				
Physical					
Rack height	Tower	8U	10U	Tower	10U
Maximum height	17" (432 mm)	13.85" (352 mm)	17.25" (438 mm)	17" (432 mm)	17.35" (441 mm)
Maximum width	15.45" (393 mm)	17" (432 mm)	17" (432 mm)	20.55" (523 mm)	17" (432 mm)
Maximum depth	28.15" (715 mm)	28.15" (715 mm)	29.5" (749 mm)	28.15" (715 mm)	28.15" (715 mm)
Net weight	371 lbs (168.4 kg)	341 lbs (154.76 kg)	466 lbs (211.58 kg)	496 lbs (225.22 kg)	436 lbs (197.94 kg)
Conformance					
Regulatory	UL-1778, FCC Part 15 Class A, CSA C22.2 No.107.3-05				
Warranty	3 years electronics, 2 years battery				

Smart-UPS On-Line SRT 3000 VA

Technical Specifications

Product features	SRT3000XLW-IEC SRT3000RMLW-IEC	SRT3000XLT SRT3000RMLT
Output		
Power rating	3000 VA/2700 W	
Nominal output voltage	230 V (208 V, 220 V, 230 V, 240 V user selectable)	208 V (240 V user selectable)
Output frequency	50/60 Hz ± 3 Hz (auto sense) 50/60 Hz ± 0.1 Hz (user selectable)	
Topology	Double-conversion Online	
Online efficiency at full load (typical)	91%	
Green mode efficiency at full load (typical)	97%	
Output connections (switched groups)	(4) IEC320 C13 (2) IEC320 C19	(2) L6-20 (1) L6-30
Input		
Nominal input voltage	230 V (208 V, 220 V, 240 V user selectable)	208 V (240 V user selectable)
Input voltage range full load (half load)	160 – 275 V (100 – 275 V)	
Input frequency	40 – 70 Hz auto-selecting	
Input connection	IEC-60320 C20, Schuko CEE 7/EU1-16P, British BS1363A	L6-20P
Batteries and Runtime		
Battery type	Maintenance-free sealed lead-acid battery with suspended electrolyte, leak proof	
Typical backup time at 1/2 load (min.)	11.8 min	11.4 min
Typical backup time at full load (min.)	4.0 min	3.8 min
Replacement battery (quantity)	APCRBC152 (1)	
External battery pack (tower/rackmount)	SRT96BP/SRT96RMBP	
Communication and Management		
Interface ports	Serial (RJ45), USB (Type A) and Smart-Slot	
Control panel	High Resolution Graphical LCD display	
Emergency power off (EPO)	Yes (NO/NC connections)	
Physical		
Rack height	3.35" (85 mm), 2U	
Maximum width (RM)	17" (432 mm)	
Maximum depth (RM)	25" (636 mm)	
Net weight	69 lb (31 kg)	
Conformance		
Regulatory	CE, VDE, RCM, and EAC, IEC/EN 62040-1, IEC/EN 62040-2, UL-1778, FCC Part 15 Class A, CSA	UL-1778, FCC Part 15 Class A, CSA
Warranty	3 years electronics, 2 years battery	

Smart-UPS On-Line SRT 3000 VA 120/208 V

Technical Specifications

Product features	SRT3000XLT-5KTF	SRT3000RMLT-5KTF
Output		
Power rating	3000 VA/2700 W	
Nominal output voltage	120 V and 208 V (240 V user selectable)	
Output frequency	50/60 Hz ± 3 Hz (auto sense) 50/60 Hz ± 0.1 Hz (user selectable)	
Topology	Double-Conversion Online	
Online efficiency at full load (typical)	91%	
Green mode efficiency at full load (typical)	97%	
Output connections (switched groups)	(8) 5-20, (4) L6-20, (1) L6-30, (1) L14-30	(12) 5-20, (2) L6-20
Input		
Nominal input voltage	208 V (240 V user selectable)	
Input voltage range full load (half load)	160 – 275 V (100 – 275 V)	
Input frequency	40 – 70 Hz auto-selecting	
Input connection	L6-20P	
Batteries and Runtime		
Battery type	Maintenance-free sealed lead-acid battery with suspended electrolyte, leak proof	
Typical backup time at 1/2 load (min.)	11.4 min	
Typical backup time at full load (min.)	3.8 min	
Replacement battery (quantity)	APCRBC152 (1)	
External battery pack (tower/rackmount)	SRT96BP/SRT96RMBP	
Communication and Management		
Interface ports	Serial (RJ45), USB (Type A) and Smart-Slot	
Control panel	High Resolution Graphical LCD display	
Emergency power off (EPO)	Yes (NO/NC connections)	
Physical		
Rack height	Tower	6.7" (170 mm) 4U
Maximum width (RM)	8.45" (215 mm)	17" (432 mm)
Maximum depth (RM)	26" (660 mm)	25" (636 mm)
Net weight	194 lb (87.82 kg)	164 lb (74.18 kg)
Conformance		
Regulatory	UL-1778, FCC Part 15 Class A, CSA	
Warranty	3 years electronics, 2 years battery	

Life Is On



Schneider Electric

132 Fairgrounds Road
West Kingston, RI 02892
Phone: 401-789-5735

www.apc.com

September 2015

©2015 Schneider Electric. All Rights Reserved.
Schneider Electric, APC, Smart-UPS, PowerChute, SmartSlot, and Life Is On Schneider Electric are trademarks owned by Schneider Electric Industries SAS or its affiliated companies. All other trademarks are the property of their respective owners.
998-1257966_GMA-US_A

This document has been
printed on recycled paper

