



TV-IP430PI (V1.0R)

SETUP INFO

UPC #	710931110425
Master Carton UPC #	10710931110422
Video	https://youtu.be/7RLt5UFApeQ
Product Page	http://www.trendnet.com/products/proddetail.asp?prod=120_TV-IP430PI
Additional Images	http://www.trendnet.com/support/supportdetail.asp?prod=120_TV-IP430PI
Alternate Product Name	Outdoor 2 MP Full HD 1080p PoE+ IR Mini Speed Dome Network Camera, IP66, 4x optical zoom, endless PTZ, 16x digital zoom, 30 m IR, 100 ft. IR
Key Search Words	Night vision, IR, Infrared, megapixel, 30 m, 100 ft, two megapixel, 1080p full hd, 2 megapixel, 2 MP, HD, IP66, PoE, Power over Ethernet, email alerts, motion detection, scheduled recordings, H.264, MPEG-4, privacy mask, logs, micro SD card slot, m, H.264, H264, outdoor, optical zoom, Speed dome, continuous ptz, 360 ptz, 4x optical zoom, 16x digital zoom, autofocus, WDR, D-WDR, IPv6, ONVIF, Samba, Micro SD card
Unit Dimensions	21.8 x 21.8 x 38.5 cm (9 x 9 x 16 in.)
Unit Weight	4.77 kg (12.38 lbs.)
Unit Qty per Case	4
Case Dimension	46 x 46 x 41 cm (19 x 19 x 17 in.)
Case Weight	17.35 kg (45 lbs.)
Harmonized Tarriff Code	8525803010
ECCN	5A991
Country of Origin	China
Product Availability Date	June 2015
Warranty	3 year limited
MSRP	\$694.99





Outdoor 2 MP Full HD 1080p PoE+ IR Mini Speed Dome Network Camera

TV-IP430PI (v1.0R)

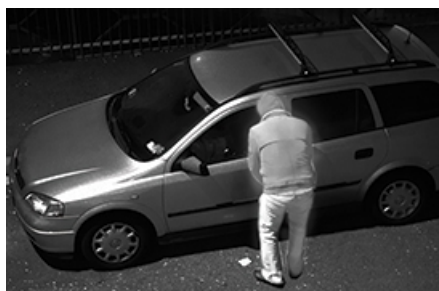
- Full 1080p HD 2MP resolution
- 4x optical zoom, 16x digital zoom, and autofocus
- Night vision up to 30 meters (100 ft.)
- Outdoor IP66 weather rating
- Endless 360° PTZ
- Digital WDR optimizes high contrast lighting environments
- Free pro-grade management software and mobile app
- Separate mounting bracket required—TV-HC400, TV-HW400, TV-HP400, or TV-HN400

TRENDnet's Outdoor 2 MP Full HD 1080p PoE IR Mini Speed Dome Network Camera, model TV-IP430PI, offers 4x optical zoom, 30 meter (100 feet) night vision, an IP66 weather rating, and endless 360 degree PTZ functionality. Record 2 Megapixel HD video (1920 x 1080) at 30 fps in a space saving H.264 compression format. Manage up to 32 TRENDnet cameras with included complimentary software and mobile apps. A separate mounting bracket is required—install with TRENDnet's TV-HC400, TV-HW400, TV-HP400, or TV-HN400.



Endless PTZ

Endless 360° pan/tilt/zoom, user defined 64x zoom, and autofocus capabilities maximize surveillance coverage.



Day/Night HD Surveillance

Full 1080p HD (2 MP) video at 30 fps in H.264 compression and 30 meter rated night vision provide 24-hour surveillance.



Outdoor Ready

Built for extreme environments with an IP66 weather rating and an operating temperature range of -30 – 65 °C (-22 – 149 °F).

Required Mounting Brackets

(sold separately)



Ceiling Mount
TV-HC400



Wall Mount
TV-HW400

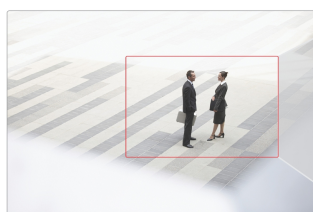


Pole Mount
TV-HP400



Corner Mount
TV-HN400

Networking Solution



4x Optical Zoom
16x Digital Zoom



Autofocus to Final
Viewing Field



30 M Night Vision

1 PoE+ Port

2 Alarm Input/output

3 Audio wires

4 Camera installation leash

5 IP66 weather rated

6 Mounting bracket collar
(Required mounting bracket,
sold separately)

7 Endless PTZ

8 Autofocus lens

9 Infrared LEDs

**2 Megapixel Full 1080p HD**

Record 1920 x 1080 at 30 fps in the space saving H.264 compression format

**Powerful Zoom**

4x optical zoom and 16x digital zoom combine for a total 64x zoom factor with autofocus

**Smart IR**

Night vision up to 30 meters (100 ft.) automatically adjusts to the zoom factor

**Endless PTZ**

Endless 360° variable speed pan tilt zoom and user defined 3D zoom within the web interface

**Outdoor Rated**

Built for extreme environments with an IP66 weather rating and an operating temperature range of -30 – 65 °C (-22 – 149 °F)

**PoE+**

Compatible with 802.3at PoE+ injectors or switches

**Additional Mounting Bracket Required**

Separate mounting bracket required—install with TRENDnet's TV-HC400, TV-HW400, TV-HP400, or TV-HN400

**Auto Patrol**

Choose pre-defined or program auto patrol sequences with varying zoom levels

**Storage**

Record video to a Samba client or to a Micro SD card (up to 32 GB sold separately)

**Tamper Detection**

Receive tamper detection video clips via email, ftp, or save to Samba client or Micro SD card

**D-WDR**

Improved image quality and autofocus in high contrast lighting environments with Digital Wide Dynamic Range technology

**Recording Schedule**

Define a weekly recording schedule

**IPv6**

IPv6 support

**ONVIF**

ONVIF compliant

**Complimentary Software**

Complimentary pro-grade software to manage up to 32 TRENDnet cameras

**Complimentary Apps**

Live video to a mobile device with free iOS® and Android™ apps

Specifications

Lens

- Focal length: 2.8 - 12 mm
- Focal depth: 10 – 1,500 mm (Wide-Tele)
- Aperture: F1.6 – 2.7 (Wide - Tele)
- Sensor: 1/2.8" Progressive Scan CMOS
- Focus: auto, semi-auto, and manual
- Iris control: auto and manual

Viewing Angle

- Horizontal: 115 - 33.8° (Wide – Tele)

Zoom

- Combined zoom factor: 64x
- Optical: 4x
- Digital: 16x
- Speed: 1s

Pan/Tilt

- Pan: endless 360°
- Tilt: -10 - 90° (auto flip)
- Pan speed: (manual) 0.1 - 160°/s, (preset) 160°/s
- Tilt speed: (manual) 0.1 - 120°/s, (preset) 120°/s
- Number of presets: 256
- Patrol: 8 patrols, up to 32 presets per patrol
- Scheduled PTZ: create detailed weekly schedule with the following activity options: auto scan, frame scan, random scan, patrol, pattern, preset, panorama scan, tilt scan, dome reboot, and dome adjust

Minimum Illumination

- IR off: color: 0.05 lux, B/W: 0.01 lux
- IR on: 0 lux
- 30 m IR illumination distance
- Smart IR: automatically adjusts wide angle and narrow focus IR to match zoom ratio

Video

- Digital Wide Dynamic Range (D-WDR)
- Backlight Compensation (BLC)
- 3D Digital Noise Reduction (DNR)
- Shutter speed: 1 - 1/10,000s
- H.264 resolution: 1920 x 1080 up to 30 fps
- MJPEG resolution: 704 x 480 up to 30 fps

Audio

- 2-way audio supported (mic and speaker not included)
- External microphone line in / speaker line out

I/O

- External input/output for alarm installation

Micro SD

- Up to 64 GB micro SD card support

Hardware Standards

- IEEE 802.1X
- IEEE 802.3
- IEEE 802.3u
- IEEE 802.3at

Device Interface

- 10/100 Mbps PoE+ port

- Power connector (for non-PoE installation)
- Audio wires (in/out/ground)
- Micro SD card slot (64 GB max.)
- Alarm I/O wires
- Suspension cable secures camera during installation

Input / Output

- Alarm input: 1 (0 – 5v DC)
- Alarm output: 1 relay output
- Audio input: 1 audio line in, 2 – 2.4 V; impedance: 1000 Ω, ± 10%
- Audio output: 1 output line out, impedance: 600 Ω

Housing

- Weather rating: IP66
- TVS 4,000 V lightning, surge, and voltage transient protection
- Built-in automatic heater for cold weather conditions

Network Protocol

- IPv4, IPv6, UDP, TCP, IGMP, ICMP, ONVIF v2.2
- DHCP, NTP, DNS, DDNS, SMTP, FTP, SNMP (v1, v2c, v3)
- CIFS/SMB, NFS
- HTTP, HTTPS
- PPPoE
- UPnP, RTSP, RTP

Operating Temperature

- -30 - 65 °C (-22 - 149 °F)

Operating Humidity

- Max. 90% non-condensing

Certifications

- CE
- FCC

Dimensions

- 155 x 155 x 235 mm (6.1 x 6.1 x 9. in.)

Weight

- 2 kg (4.4 lbs.)

Power (Power brick not included)

- Input: PoE+ (IEEE 802.3at)
- Consumption: 20 /14 Watts max. (IR and heater on/off)

Required Mounting Accessories (not included)

- Ceiling mount: TV-HC400
- Pole mount: TV-HP400
- Wall mount: TV-HW400
- Corner mount: TV-HN400

Management Interface

- Multi-language support: English, French, German, Russian, and Spanish
- IP address filter
- QoS traffic prioritization
- Time, date, and text overlay
- Image settings: brightness, contrast, saturation, limit gain, sharpness, focus mode, minimum focus,

- exposure mode, smart IR, video standard, day/night switch, sensitivity, mirror, slow shutter, D-WDR, lens initialization, BLC, white balance, digital noise reduction, noise reduction level, Defog mode, zoom limit, HLC
- D-WDR enhances video quality in high contrast daytime lighting
- 3D DNR Digital Noise Reduction enhances night vision quality
- Scheduled recording: continuous and motion detection
- Video storage: to computer, NAS, CIFS/SMB share, NFS, Micro SD card, FTP server, or through software
- Motion detection fields: define custom motion detection areas, motion sensitivity, and dynamic motion analysis
- Smart privacy masks: custom privacy masks are fixed to an area of interest as the camera pans and tilts
- Tamper detection: email notification if the viewing field is suddenly obscured
- Browser video playback: advanced playback functionality with visual timeline displaying detected motion and scheduled recordings
- Alert messages: storage full, storage error, and illegal login
- Snapshot: real time snapshot, motion detection with schedule, tamper detection with schedule
- Supported dynamic DNS services: dyn.com and No-IP.org
- Management Setting: maximum 32 user accounts
- Supports remote management
- Storage logs: Alarm, Exception, Operation, and others
- Compatibility: Internet Explorer® 9.0 or higher, Firefox® 13.0 or higher, Safari® 5.0 or higher, Chrome™ 24.0 or higher

TRENDnetVIEW Pro Software

- Supports up to 32 TRENDnet cameras
- Multiple language support
- Set recording options (motion detection, schedule, event trigger)
- Search and playback
- Custom viewing modes and options
- Compatibility: Windows® 10, 8.1, 8, 7, Vista, XP, Windows Server® 2003, 2008

TRENDnetVIEW App

- Free iOS and Android™ app
- View your camera on your mobile device
- Take snapshots
- Pan/Tilt/Zoom

Warranty

- 3 year limited

Package Contents

- TV-IP430PI
- CD-ROM (Software & User's Guide)
- Quick Installation Guide

Compatible NVR: www.trendnet.com/info/tv-nvr104

* PoE+ (802.3at) switch or injector required.

