

U P G R A D E Y O U R A N A L O G

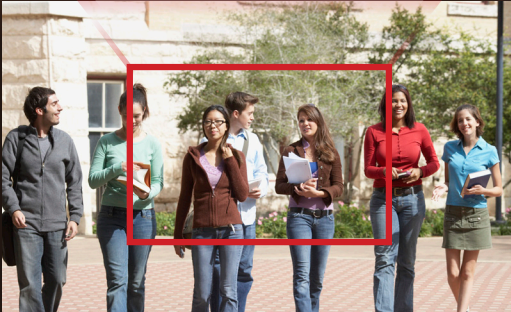
Clear Digital Zoom



KEEP YOUR COAX

**HD
TVI**

Upgrade your analog system to full 1080p using your existing coax infrastructure with Speco's HD-TVI products. Our HD-TVI cameras offer high resolution images with clear digital zoom. With Speco's HD-TVI cameras and DVRs you won't have to touch your wiring system.



Superior Image Quality

a **MINI** investment for **MEGAPIXEL.**


speco technologies®

Cost-Effective Upgrade for Analog Installations



INT Intensifier® T HD-TVI 1080p 2MP Indoor/Outdoor Vandal Resistant Dome Camera

Heater circuitry & anti-moisture glass reduce fog or condensation



Superior low-light performance

- » Amplify existing light with no distance limitation
- » Relay output for motion detection

HTINT591T
3.6mm fixed lens,
dark grey housing

INT Intensifier® T HD-TVI 1080p 2MP Indoor/Outdoor Vandal Resistant Dome/Turret Camera

Heater circuitry & anti-moisture glass reduce fog or condensation



Superior low-light performance

- » Amplify existing light with no distance limitation
- » Relay output for motion detection

HTINT601T
3.6mm fixed lens,
dark grey housing

IR Intense IR HD-TVI 1080p 2MP Indoor/Outdoor Vandal Resistant Dome Camera

Heater circuitry & anti-moisture glass reduce fog or condensation



Intense IR function no saturation of images

- » Intense IR function — no saturation, IR intensity adapts to subject to provide vivid image
- » IR Range 66 ft. (depending on scene reflection)

HT5941T
3.6mm fixed lens,
dark grey housing

IR Intense IR HD-TVI 1080p 2MP Indoor/Outdoor Vandal Resistant Dome/Turret Camera

Heater circuitry & anti-moisture glass reduce fog or condensation



Intense IR function no saturation of images

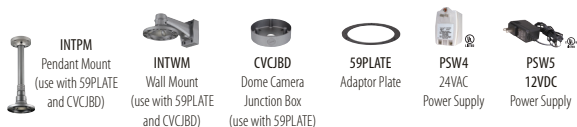
- » Intense IR function — no saturation, IR intensity adapts to subject to provide vivid image
- » IR Range 80 ft. (depending on scene reflection)

HT6041T
3.6mm fixed lens,
dark grey housing

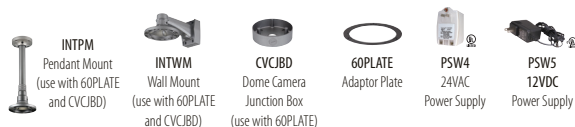
Common specifications

- » Full HD resolution over coax (HD-TVI)
- » Supports up to Full HD 1080p @ 30fps
- » True WDR operation
- » With presets: Indoor, Outdoor, Low-Light, Lobby, Elevator (INT T models only)
- » Heater circuitry and anti-moisture glass reduce fog or condensation under any weather condition
- » 3-axis for wall and ceiling mounting
- » Full OSD operation through on-board control and UTC (up the coax)
- » 12VDC & 24VAC dual voltage operation
- » Vandal / tamper resistant
- » IP67 compliant
- » 5 year warranty

Optional Accessories



Optional Accessories



VT 1080p HD-TVI Digital Video Recorder

- » 1080p @ 15fps / 720 @ 30fps (HD-TVI)
- » Backwards compatible with all analog cameras
- » UTC function allows for zoom/focus and OSD control over coax
- » Video Out: 1 HDMI®, 1 VGA, 1 CVBS (for Main or Spot)
- » Networkable DVR with free Speco DDNS server
- » 2-way audio communication
- » 3 year warranty

D4VT, D8VT, D16VT
4, 8 or 16 Channel 1080p HD-TVI Digital Video Recorder



- » **EZ Set-Up Wizards:** One click wizard guides you to set up essentials of the system in a logical and easy to understand sequence.
Date/Time - Recording method
Recording video quality - Network Port forwarding
- » **EZ Search:** quickly search events from thumbnails
EZ Record: quickly setup recording resolutions and recording type
- » **EZ Copy:** auto copy what you are playing onto a USB flash drive

INT Intensifier® T HD-TVI 1080p 2MP Indoor/Outdoor Bullet Camera

Heater circuitry & anti-moisture glass reduce fog or condensation

Superior low-light performance



HTINT70T
2.8-12mm auto iris varifocal lens, dark grey housing

HTINT701T
3.6mm fixed lens, dark grey housing

- » Amplify existing light with no distance limitation
- » Relay output for motion detection

IR Intense IR HD-TVI 1080p 2MP Indoor/Outdoor Bullet Cameras

Heater circuitry & anti-moisture glass reduce fog or condensation

Intense IR function no saturation of images



HT7040T
2.8-12mm auto iris varifocal lens, dark grey housing

HT7041T
3.6mm fixed lens, dark grey housing

- » Intense IR function — no saturation, IR intensity adapts to subject to provide vivid image
- » IR Range 98 ft. (depending on scene reflection)



Common specifications

- » Full HD resolution over coax (HD-TVI)
- » Supports up to Full HD 1080p @ 30fps
- » True WDR operation
- » Superior low-light performance
- » With presets: Indoor, Outdoor, Low-Light, Lobby, Elevator (INT T models only)
- » Heater circuitry and anti-moisture glass reduce fog or condensation under any weather condition
- » 3-axis for wall and ceiling mounting
- » Full OSD operation through on-board control and UTC (up the coax)
- » 12VDC & 24VAC dual voltage operation
- » IP67 compliant
- » 5 year warranty

Optional Accessories



INTJBS
Square
Junction Box



INTCM
Corner/Pole
Adaptor



CVCJBB
Bullet Camera
Junction Box



PSW4
24VAC
Power Supply



PSW5
12VDC
Power Supply

UPGRADE YOUR ANALOG



Upgrade your analog system to full 1080p using your existing coax infrastructure with Speco's HD-TVI products. Our HD-TVI cameras offer high resolution images with clear digital zoom. With Speco's HD-TVI cameras and DVRs you won't have to touch your wiring system.

a **MINI** investment for **MEGAPIXEL**.



For more information
contact us at: sales@specotech.com
1.800.645.5516 or specotech.com

HD-TVI
Brochure



030519010382

Speco Technologies is constantly developing and improving products. We reserve the right to modify product design and specifications without notice and without incurring any obligation. Rev. 5.1.15