

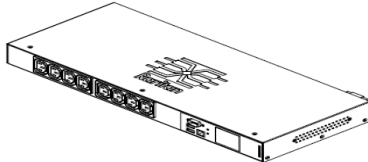
Technical Specification

Raritan PX
Model Number: PX3-5180R

200-240V
16A
3.2-3.8KVA




Line Drawing



Features

| | |
|-------------------------------------|--|
| Energy Metering | Voltage (V), Current (A), Active Power (kW), Real Power (kVA), Energy (kWh), Power Factor |
| Metering Accuracy | ISO/IEC 62053-21 1% |
| Metering per Input Line | Yes |
| Metering per Branch Circuit Breaker | Yes |
| Metering per Output Receptacle | Yes |
| Remote Outlet Switching | Yes |
| Environmental Sensor Ready | Yes |
| Networking | 10/100 BaseT Ethernet. Optional WiFi (802.11a/b/g/n) |
| Remote Management | HTTP(s); SSH; Telnet; RS-232 (Serial); Power IQ; SNMP version v2/v3; SMTP; JSON-RPC |
| Cascading | Yes Max 8 PDUs can be daisy chained using a single Ethernet connection |
| Onboard Display | User-selectable display (voltage, current, or active power: per line, per breaker, or per receptacle) |
| Compatible Sensors | Temperature, Humidity, Air Flow, Static Pressure Single cable connection provides temp/humidity monitoring at three points in cabinet (with a single sensor assembly) |
| Replaceable controller | No |

Input

| | |
|-----------------------|--|
| Input Plug | NEMA L6-20P IP44("splashproof") (208V, Single phase)  |
| Cord Length | 3 meters (9.84 feet) standard |
| Cord Entry | Rear feed |
| Cable Type | 2P 3W |
| Number of Power Cords | 1 |
| Maximum Input Current | 20A (per line) |
| Rated Input | 16A (per line) (North America) |
| Nominal Input Voltage | 208V, Single phase |
| Rated Input Voltage | 200 - 240V, Single phase |
| Input Frequency | 50/60Hz |
| Power Capacity | 3.2kVA at 200V, 3.8kVA at 240V |

Output

| | |
|------------------------|--|
| Nominal Output Voltage | 208V |
| Rated Output Voltage | 200 - 240V |
| Output Connections | (8) IEC 60320 C13 2-pole, 3-wire; 12A (regulatory derated from 15A) |
| Overload Protection | N/A |
| Cable Retention | Raritan SecureLock™ Ready Optional retention clips are also available |

Physical

| | |
|------------------------|--|
| Dimensions (W x D x H) | 17.3" x 7.2" x 1.7" ; 440mm x 183mm x 44mm |
| Color | Black powder coat |
| Mounting | 100-89-8430-00 |

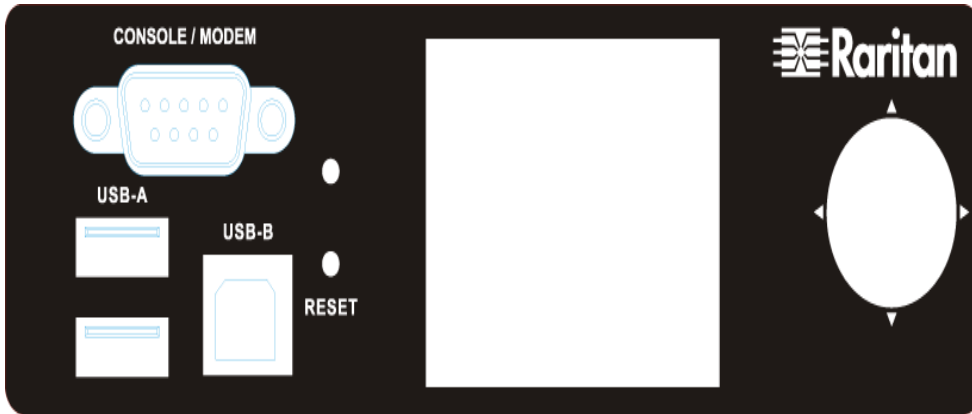
Environmental

| | |
|-----------------------------|-----------------------|
| Operating Environment | 5 - 60°C (41 - 140°F) |
| Operating Relative Humidity | 5-85% |
| Operating Elevation | 0-10000ft |

Conformance

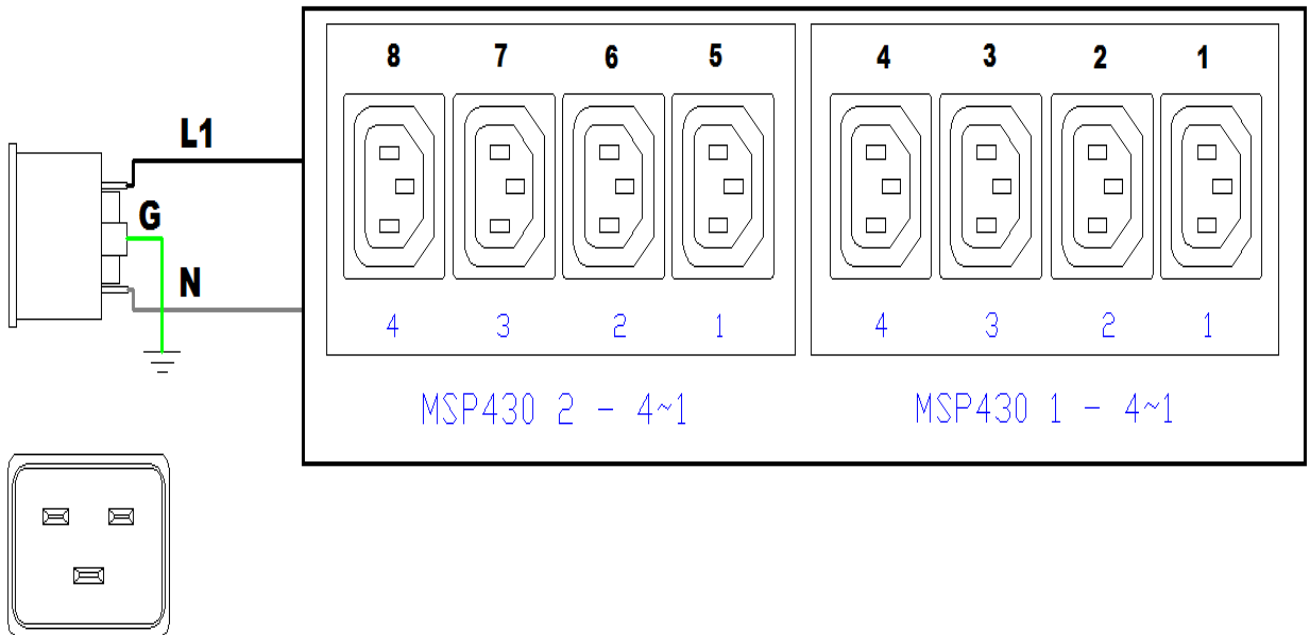
| | |
|----------------------|---|
| Regulatory Approvals | UL Listed Canada ICES-003, Class A Part 15 Class A of the FCC rules RoHS compliant |
|----------------------|---|

Control Panel Detail

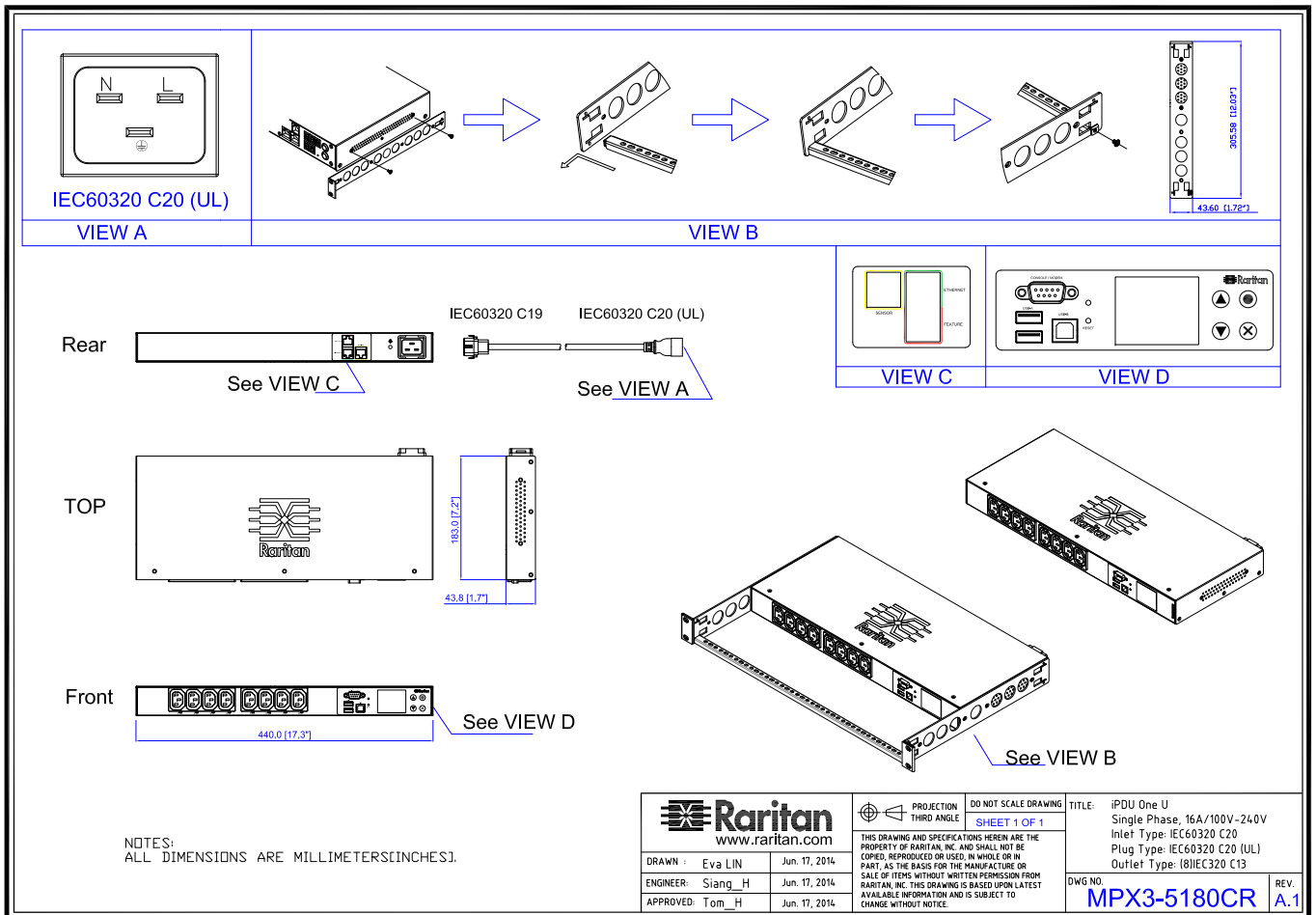


Electrical Drawing Detail

CIRCUIT 1



Mechanical Diagram



Compatible Sensors

| | |
|----------------------|--|
| Environmental | DPX-T1 : single temperature node DPX-T2H2 : 2 nodes: each providing both temp + humidity DPX-T3H1 : 3 temperature nodes; one also with humidity DPX-TDP1 : temperature + differential air pressure DPX-AF1 : air flow sensor DPX-CC2-TR : Dual contact closure sensor |
|----------------------|--|

©2015 Raritan Inc. All rights reserved. Raritan®, Know More. Manage Smarter.TM, Dominion® and PX® are registered trademarks or trademarks of Raritan Inc. or its wholly owned subsidiaries. All others are registered trademarks or trademarks of their respective owners. For more information, please visit www.raritan.com